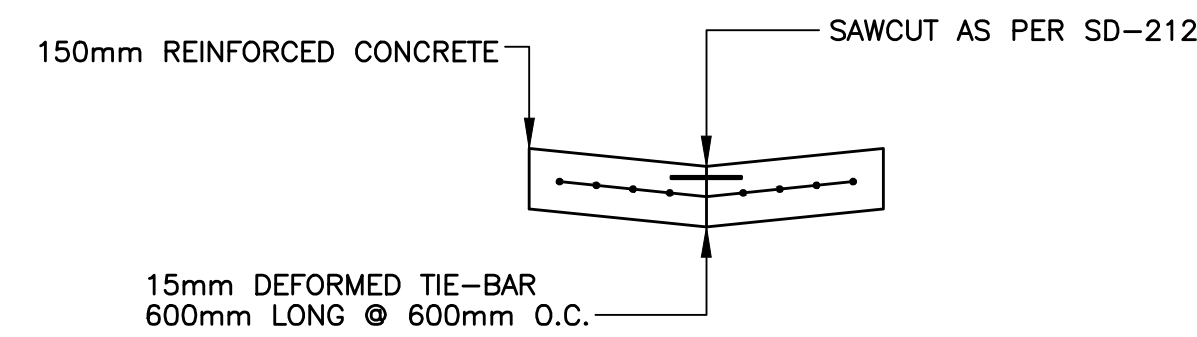


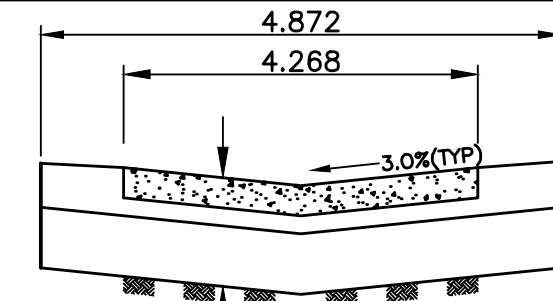
NOTES:

- ISOLATE EXISTING HYDRO POLES AS DIRECTED BY CONTRACT ADMINISTRATOR
- RENEW EXISTING APPROACHES AS DIRECTED BY CONTRACT ADMINISTRATOR
- EXTEND SUBDRAINS AS DIRECTED BY CONTRACT ADMINISTRATOR
- ADDITIONAL EXCAVATION AND INSTALLATION OF SUBGRADE GEGRID TO BE DETERMINED BY CONTRACT ADMINISTRATOR
- CROSSFALL TO BE ADJUSTED AS SHOWN ON PROFILE

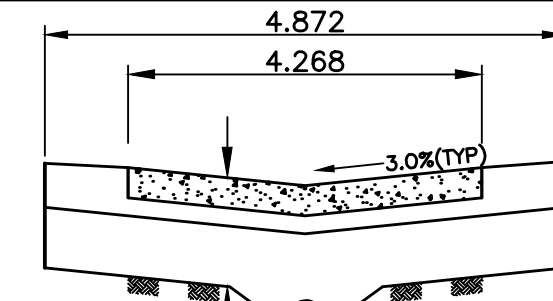


TYPICAL PAVEMENT CROSS SECTION
N.T.S.

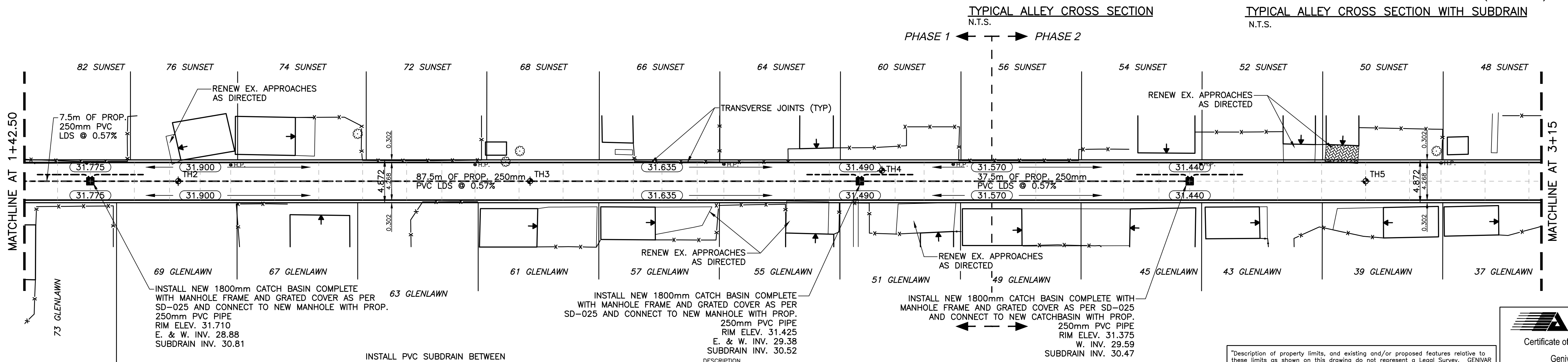
SUNSET / GLENLAWN ALLEY



TYPICAL ALLEY CROSS SECTION
N.T.S.



TYPICAL ALLEY CROSS SECTION WITH SUBDRAIN
N.T.S.



WATERMAIN	M.T.S.	WATERMAIN	WATERMAIN
HYDRANT	TRAFFIC SIGNAL	VALVE	VALVE
VALVE	CONCRETE/ASPHALT	LAND DRAINAGE SEWER	LAND DRAINAGE SEWER
CURB STOP	SIDEWALK	WASTE WATER SEWER	WASTE WATER SEWER
WASTE WATER SEWER	CURB RAMP	CENTERLINE	CENTERLINE
LAND DRAINAGE SEWER	PROPERTY LINE	SOUTH & EAST GUTTER	SOUTH & EAST GUTTER
C.B. LEAD	ELEVATIONS	NORTH & WEST GUTTER	NORTH & WEST GUTTER
MANHOLE	TEST HOLE LOCATION	ASPH./CONC. PAD	ASPH./CONC. PAD
CATCH BASIN	GARAGE DOOR LOCATION	GARAGE PAD	GARAGE PAD
GAS			
EXISTING	LEGEND - PLAN	PROPOSED	PROPOSED

LOCATION APPROVED UNDERGROUND STRUCTURES

SUPV. U/G STRUCTURES DATE COMMITTEE

NOTE:
LOCATION OF UNDERGROUND STRUCTURES AS SHOWN ARE BASED ON THE BEST INFORMATION AVAILABLE BUT NO GUARANTEE IS GIVEN THAT ALL EXISTING UTILITIES ARE SHOWN OR THAT THE GIVEN LOCATIONS ARE EXACT. CONFIRMATION OF EXISTENCE AND EXACT LOCATION OF ALL SERVICES MUST BE OBTAINED FROM THE INDIVIDUAL UTILITIES BEFORE PROCEEDING WITH CONSTRUCTION.

B.M. ELEV.	54-026	231.638
NO.	REVISIONS	DATE BY
3	ADDENDUM 1 DRAWING	31/08/11 R.H.
2	TENDER DRAWING	19/08/11 R.H.
1	SUBMISSION	15/08/11 R.H.

GENIVAR
10 PRAIRIE WAY WINNIPEG, MANITOBA R2J 3J8
PH: (204)-233-2113 FAX: (204)-233-2080

DESIGNED BY: R.H. CHECKED BY: S.M.
DRAWN BY: R.H. APPROVED BY: I.McK.
HOR. SCALE: 1:250
VERT. SCALE: 1:10
DATE: AUGUST 2011
RELEASED FOR CONSTRUCTION: NOT RELEASED

ENGINEERS SEAL

CONSULTANT DRAWING NO. 111-21260-00-02

THE CITY OF WINNIPEG
PUBLIC WORKS DEPARTMENT

2011 LOCAL IMPROVEMENTS
SUNSET / GLENLAWN ALLEY
FROM MATCHLINE AT STA. 1+42.50 TO MATCHLINE AT STA 3+15
LANE PAVEMENT

CITY DRAWING NO. SHEET 2 OF 5
699-2011

APEGM
Certificate of Authorization
Genivar Inc.
No. 5079 Expiry: April 30, 2012

"Description of property limits, and existing and/or proposed features relative to these limits as shown on this drawing do not represent a Legal Survey. GENIVAR makes no representation or guarantee that the property limit information is accurate. GENIVAR accepts no responsibility for damages, if any, suffered by any third party as a result of decisions made or actions based on this drawing."