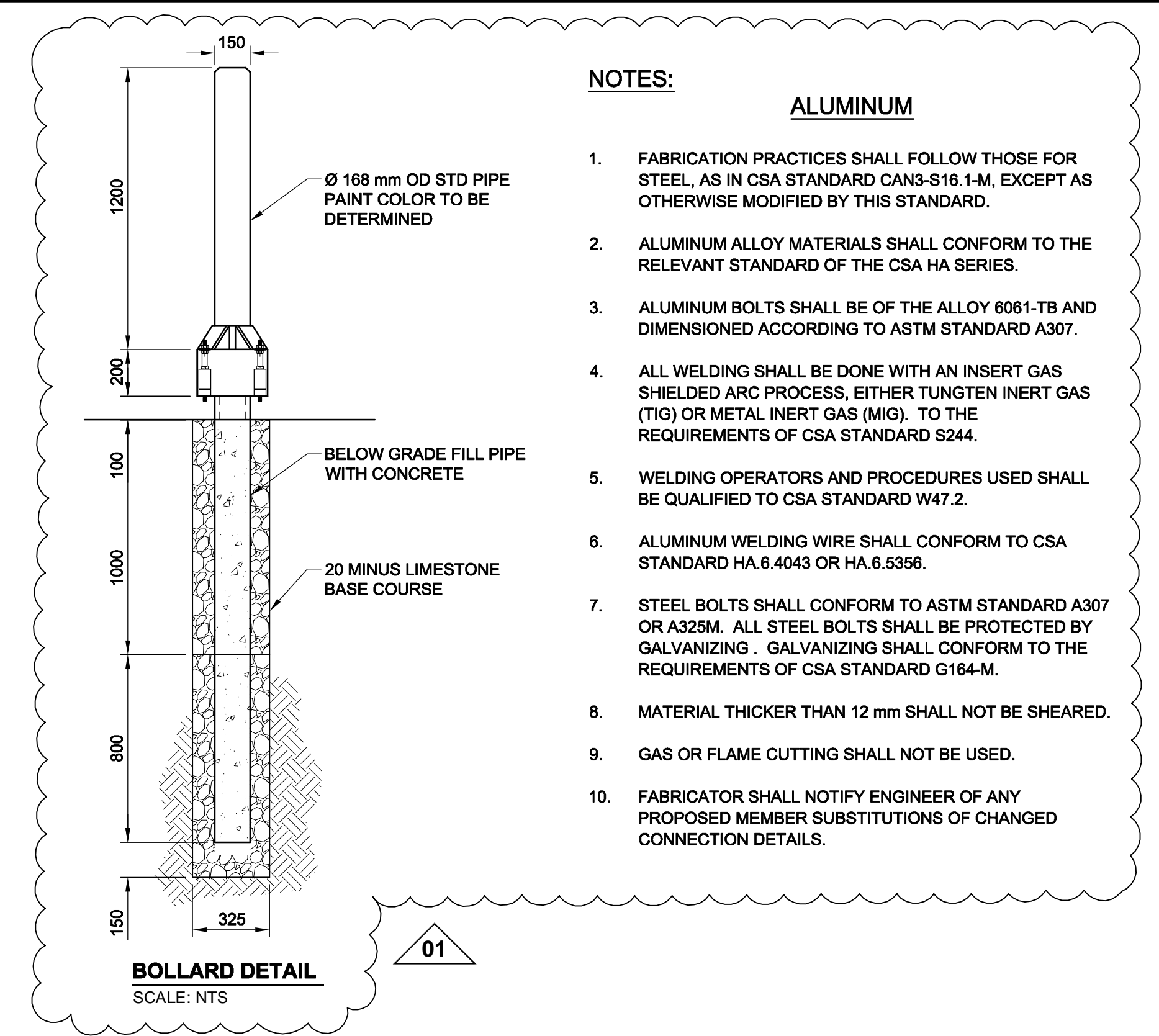
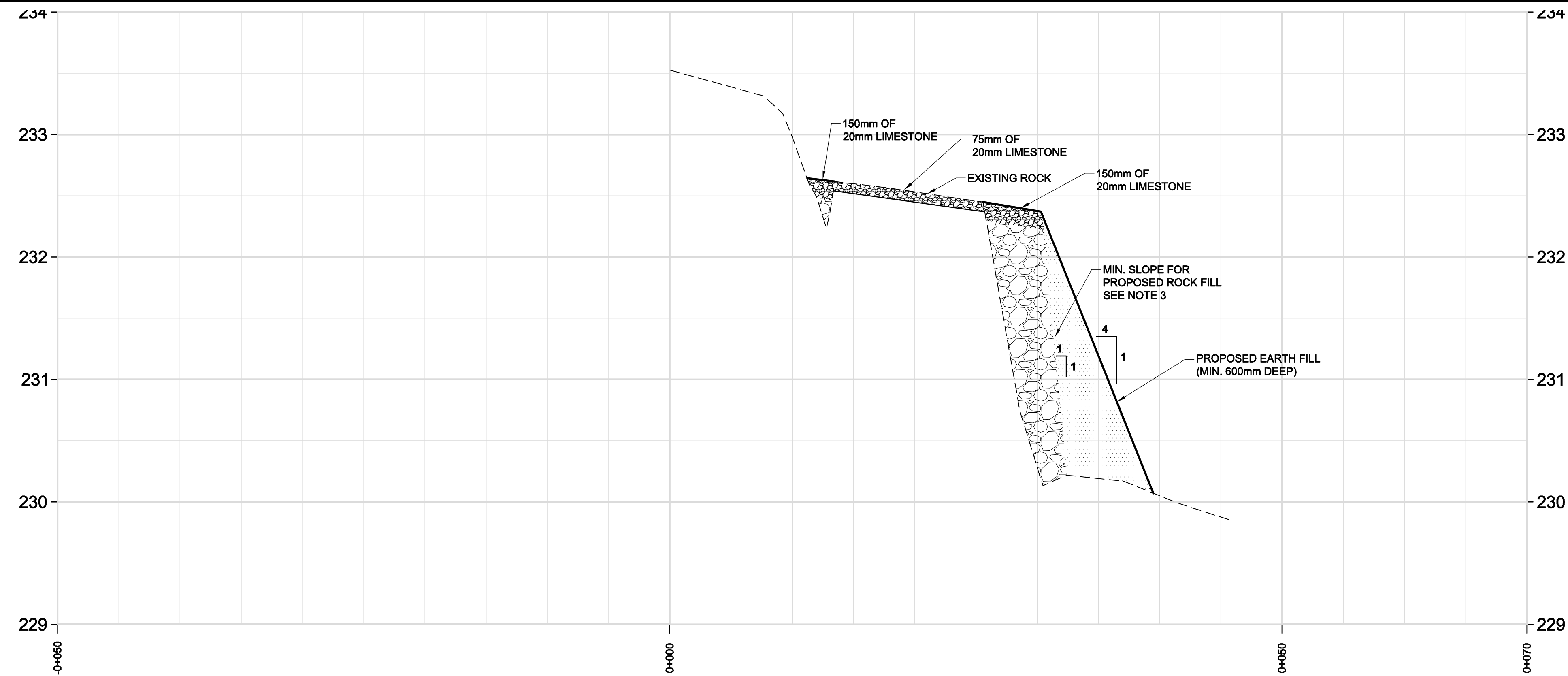


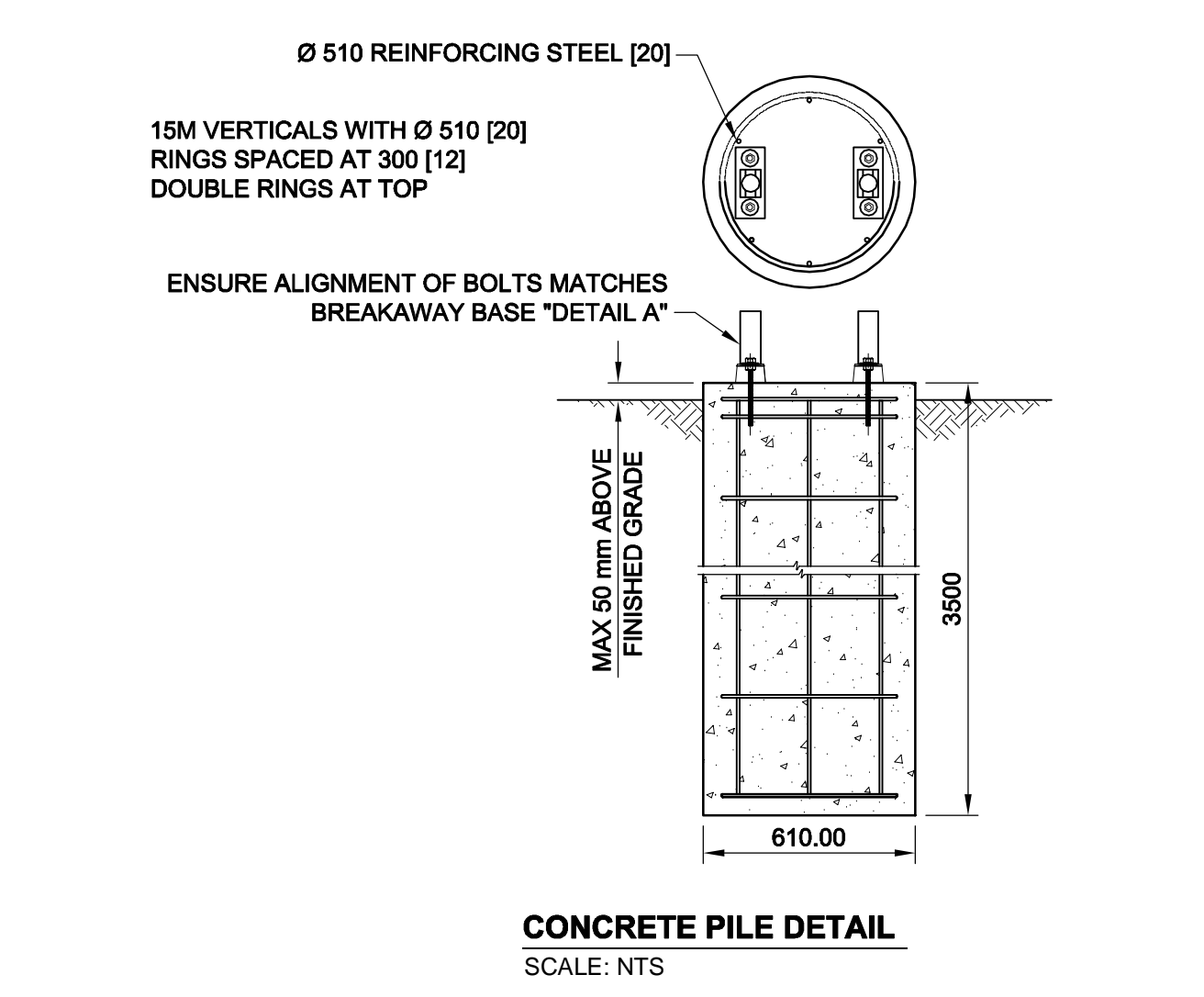
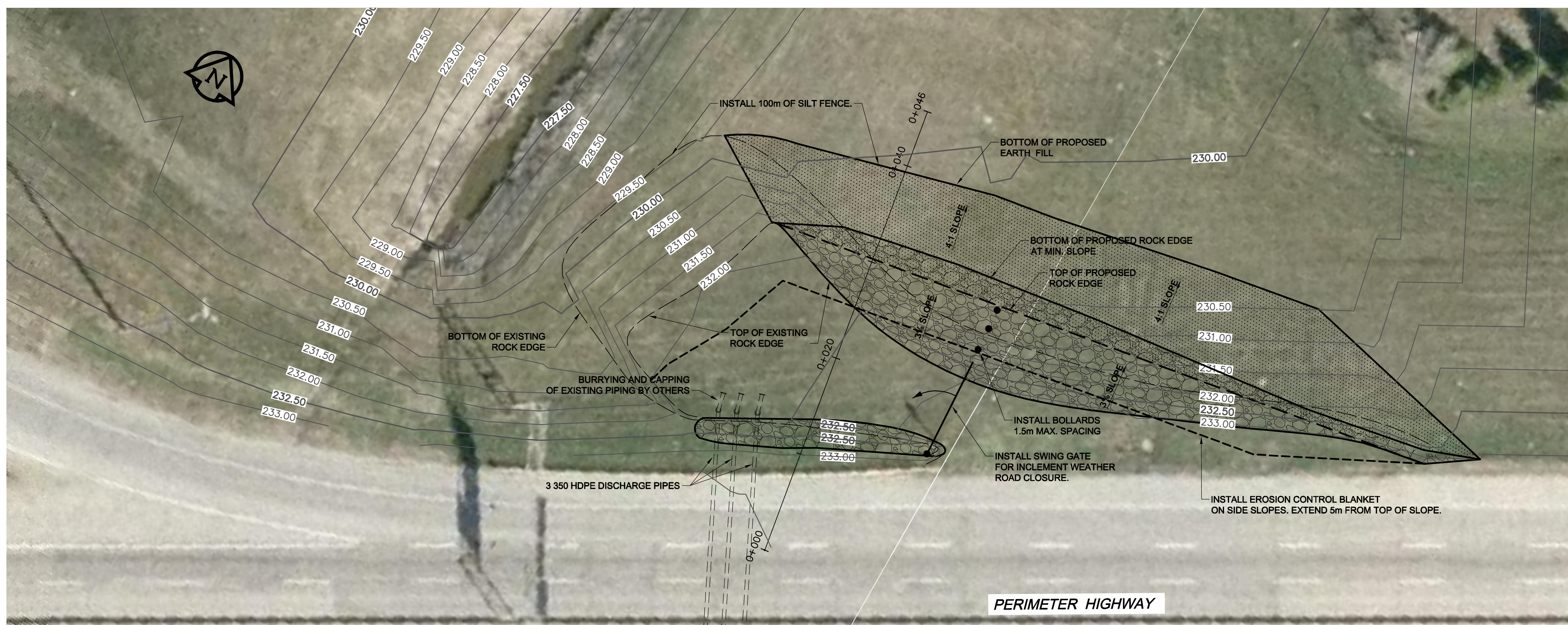
D SIZE 22" x 34" (559mm x 864mm)

PLOT: 11/10/07 2:48:52 PM

AECOM REVIEW DRAFT CHK  
AECOM FILE NAME: 60219381-01-C-101-ROX.dwg Saved By: smiths1



- NOTES:**
- ALUMINUM**
- FABRICATION PRACTICES SHALL FOLLOW THOSE FOR STEEL, AS IN CSA STANDARD CAN3-S16.1-M, EXCEPT AS OTHERWISE MODIFIED BY THIS STANDARD.
  - ALUMINUM ALLOY MATERIALS SHALL CONFORM TO THE RELEVANT STANDARD OF THE CSA HA SERIES.
  - ALUMINUM BOLTS SHALL BE OF THE ALLOY 6061-TB AND DIMENSIONED ACCORDING TO ASTM STANDARD A307.
  - ALL WELDING SHALL BE DONE WITH AN INSERT GAS SHIELDED ARC PROCESS, EITHER TUNGSTEN INERT GAS (TIG) OR METAL INERT GAS (MIG), TO THE REQUIREMENTS OF CSA STANDARD S244.
  - WELDING OPERATORS AND PROCEDURES USED SHALL BE QUALIFIED TO CSA STANDARD W47.2.
  - ALUMINUM WELDING WIRE SHALL CONFORM TO CSA STANDARD HA.6.4043 OR HA.6.5356.
  - STEEL BOLTS SHALL CONFORM TO ASTM STANDARD A307 OR A325M. ALL STEEL BOLTS SHALL BE PROTECTED BY GALVANIZING. GALVANIZING SHALL CONFORM TO THE REQUIREMENTS OF CSA STANDARD G164-M.
  - MATERIAL THICKER THAN 12 mm SHALL NOT BE SHEARED.
  - GAS OR FLAME CUTTING SHALL NOT BE USED.
  - FABRICATOR SHALL NOTIFY ENGINEER OF ANY PROPOSED MEMBER SUBSTITUTIONS OF CHANGED CONNECTION DETAILS.



- CONSTRUCTION NOTES:**
- ALL WORK AND MATERIALS SHALL CONFORM TO THE CITY OF WINNIPEG STANDARD CONSTRUCTION SPECIFICATIONS.
  - TRAFFIC MANAGEMENT ON THE PERIMETER HIGHWAY TO BE IN ACCORDANCE WITH THE MANITOBA INFRASTRUCTURE AND TRANSPORTATION WORK ZONE TRAFFIC CONTROL MANUAL (STANDARD DETAIL TMP-7A).
  - SLOPES SHOWN ON PROFILE ARE MINIMUM SLOPES REQUIRED. ALL ROCK IMPORTED FROM THE BEAUJOLAIS COULEE LOCATION TO BE UTILIZED. THIS MAY REDUCE THE AMOUNT OF REQUIRED EARTH FILL.
  - SEEDING IN ACCORDANCE WITH SPECIFICATION SECTION E3.
  - REMOVE SILT FENCE AND EROSION CONTROL BLANKET ONCE ACCEPTABLE VEGETATION HAS OCCURRED.

**AECOM**  
Certificate of Authorization  
AECOM Canada Ltd.  
No. 4671 Date: \_\_\_\_\_  
BID OPPORTUNITY NO. 656-2011

150 WM	WATERMAIN	150 WM	•	CURB STOP	•	150 WM	WATERMAIN	150 WM	+
•	HYDRANT	•	+	REDUCER	+	•	HYDRANT	•	+
•	VALVE	•	+	COUPLING	+	•	VALVE	•	+
300 LDS	LAND DRAINAGE SEWER	300 LDS	+	ANODE	+	300 LDS	LAND DRAINAGE SEWER	300 LDS	+
250 WWS	WASTE WATER SEWER	250 WWS	+	HYDRO	+	250 WWS	WASTE WATER SEWER	250 WWS	+
•	MANHOLE	•	+	MTS	•	•	PAVEMENT CROWN	•	+
•	CATCH BASIN	•	+	GAS	•	•	N/W PROPERTY LINE	•	+
•	CURB INLET	•	+	TESTHOLE	•	•	S/E PROPERTY LINE	•	+
•	CULVERT	•	+	LAMP STANDARD	•	•	N/W GUTTER	•	+
•	PIPE ABANDONMENTS	•	+	TREE	•	•	S/E GUTTER	•	+
•	SURVEY BAR	•	+						
EXISTING	LEGEND - PLAN	NEW	EXISTING	LEGEND - PLAN	NEW	EXISTING	LEGEND - PROFILE	NEW	

**LOCATION APPROVED UNDERGROUND STRUCTURES**

SUPR. U/G STRUCTURES COMMITTEE DATE

NOTE:  
LOCATION OF UNDERGROUND STRUCTURES AS SHOWN ARE BASED ON THE BEST INFORMATION AVAILABLE. BUT NO GUARANTEE IS GIVEN THAT ALL EXISTING UTILITIES ARE SHOWN OR THAT THE GIVEN LOCATIONS ARE EXACT. CONFIRMATION OF EXISTENCE AND EXACT LOCATION OF ALL SERVICES MUST BE OBTAINED FROM THE INDIVIDUAL UTILITIES BEFORE PROCEEDING WITH CONSTRUCTION.

01	ISSUED FOR ADDENDUM No. 1	11/10/06	GDL
0	ISSUED FOR TENDER	11/09/23	GDL
NO.	REVISIONS	Y/M/D	BY

**AECOM**

This drawing has been prepared for the use of AECOM's client and may not be used, reproduced or relied upon by third parties, except as agreed by AECOM and its client, as required by law or for use by governmental reviewing agencies. AECOM accepts no responsibility, and denies any liability whatsoever, to any party that modifies this drawing without AECOM's express written consent. Do not scale this document. All measurements must be obtained from stated dimensions.

DESIGNED BY: PL  
CHECKED BY: KWF  
DRAWN BY: GDL  
APPROVED BY:  
HOR. SCALE: 1:250  
VERT. SCALE: 1:25  
DATE: \_\_\_\_\_  
RELEASED FOR CONSTRUCTION DATE: \_\_\_\_\_

PROFESSIONAL'S SEAL  
ORIGINAL SIGNED BY  
K. W. FITCHETT  
11/09/23  
CONSULTANT DRAWING NO.  
60219381-01-C-101-ROX.dwg

**THE CITY OF WINNIPEG**  
WATER AND WASTE DEPARTMENT

CITY OF WINNIPEG  
BEAUJOLAIS COULEE AND BALDRY CREEK  
FLOOD RESTORATION WORKS

PERIMETER HIGHWAY  
300m EAST OF PEMBINA HIGHWAY OVERPASS

SHEET 1 OF 2  
CITY DRAWING NUMBER  
SLD-62 REV 1