



FILE No. 59151

C.E.D. 74-59

ORIGINAL SPECS.  
& Addenda

61

S P E C I F I C A T I O N S

CITY OF WINNIPEG  
WILKES AVENUE PUMPING STATION  
WINNIPEG, MANITOBA

D A T E NOVEMBER 10, 1959

S E T N O . 11

SMITH CARTER SEARLE ASSOCIATES  
ARCHITECTS AND ENGINEERS  
WINNIPEG AND BRANDON

M: PRECAST CONCRETE PANELS

M:1           The General Conditions of the contract and the special provisions listed, shall apply to and form an integral part of this specification.  
GENERAL

M:2 SCOPE

- M:2:1 WORK INCLUDED   a) This contractor shall do all work, supply all materials, clips, fastenings, inserts as required to supply and install precast concrete wall panels, precast concrete coping, reinforcing, both temperature and prestressing, grouting and finishing.
- b) Precast concrete panels over doors.
- M:2:2 WORK EXCLUDED   Steel frame for supports shall be by Structural Steel contractor.

M:3 MATERIALS

- M:3:1 AGGREGATES       a) Aggregates for concrete shall be to A.S.T.M. tentative specification for concrete aggregates C33-53.
- b) All aggregates shall be limestone, free from pink, yellow and black particles.
- M:3:2 REINFORCING     a) Reinforcing steel shall conform with C.S.A. G30. series specification.
- b) Mesh reinforcing shall be welded wire equal to C.S.A. G30.3 1954 specification.
- c) Reinforcing for prestressing shall be 5MM wire in accordance with Prestressed Concrete Institute recommendations.
- M:3:3 CEMENT           Portland cement shall be equal to C.S.A. specification A5-1951  
White Medusa cement shall be equal to C.S.A. specification.
- M:3:4 WATER           Water shall be clean, free from oil, acid, injurious amounts of vegetable matter, alkalies, salts or other deleterious matter.
- M:3:5 GROUT           Grout shall be Medusa Stoneset.
- M:3:6 SEALANTS         Caulking as required, shown, shall be Thiokol base Minnesota Mining curtain wall sealer or Tremco Lastomeric.
- M:3:7 SHOP DRAWINGS   Contractor shall submit shop drawings for all precast units showing reinforcing, size, shape, clips and anchors.

M:4 WORKMANSHIP

- M:4:1 GENERAL         a) All work to be done by skilled craftsmen experienced in precasting, prestressing work, capable of producing a high quality, high finish product.
- b) All concrete shall be steam cured minimum three hours, and shall have not more than 5% absorption factor.

PRECAST CONCRETE PANELS

- c) All forms to be steel lined, clean, free from rust and scale, or other matter which would cause staining or poor finishing.
- d) All work to be erected true to line, plumb, all parts aligned as shown on drawings.

M:4:2  
CONCRETE

- a) All concrete shall be 5000 p.s.i. at 28 days.
- b) Concrete shall be mixed with 60% white Medusa Cement and 40% standard Portland grey cement.

M:4:3  
PANELS

- a) Wall panels shall be formed to profile indicated. Shall have a smooth monolithic glass like finish. Shall be formed with integral lock joint as detailed.
- b) Provide inserts and welding clips for setting at steel frame. These panels to be installed after interior wall has been laid up.
- c) At interlocked joint and at all vertical panel joints and elsewhere as noted or shown, provide caulking seal using material as specified.

M:4:4  
PRECAST  
COPING

Precast coping shall be formed to profile indicated, to have a smooth monolithic glass like finish with integral poured reglet to receive flashing as detailed complete with welding anchors and other setting devices as required, shall be caulked and sealed.

M:4:5  
SAMPLES

This contractor shall supply to Architect for approvals, samples of all precast material as specified. These samples shall be held as a quality of finish and color, and shall be set as a standard for the entire work by this contractor. Deviation from sample finish and color by this supplier shall result in replacement of materials at no extra cost to City.

M:4:6  
FACING  
PANELS

Precast facing panels over door ways shall be maximum 2" in thickness, reinforced with welded wire mesh, cast in glass faced forms to sizes indicated on drawings. For tendering purposes panel color shall be green. This contractor will be required to produce minimum 4 - 12" x 12" samples for approval as to color and line.

ITEM NO. 15 - PRECAST CONCRETE PANELS - SECTION M

- a) Item M:3:6. All surfaces to be caulked with thickal base sealant shall be primed with special primer designed to seal porosity in concrete around joints and to increase bond between sealant and concrete.
- b) All precast wall panels shall be pre-stressed to provide 500 p.s.i. on concrete. - Item M:3:2.
- c) Item M:4:3 (c) - add "after first applying special primer specified in strict accordance with manufacturers recommendations.  
Add:
- d) Supply to excavating trade for installation precast 6" flexicore slabs complete with dowels for underground electrical service duct.

ITEM NO. 16 - MISCELLANEOUS METAL - SECTION R

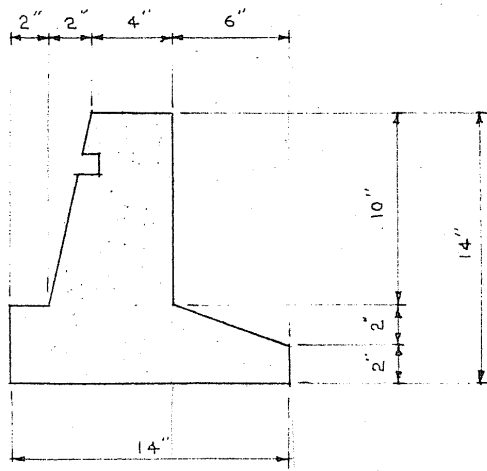
- a) Supply to carpentry trade bolts and accessories required for setting maple blocking in chlorine storage.
- b) Item R:4:10 (b). Cover to be 5 grille similar to that as specified under Item R:4:10 (c) - not 1/4" plate.
- c) Item R:4:11 type AA 2-1/2" x 3/16" to read type AA 2-1/4" x 3/16".
- d) Item R:4:16. Scale capacity to be 2000 pounds.
- e) Item R:4:18 - Delete.
- f) Item R:4:20 (a) Ladder rungs to be 3/4" manhole steps bent to profile shown sheet 26 and galvanized.
- g) Item R:4:20 (c) - 54" should read 48".
- h) Item R:4:21 - supply 6 - 4" I.D. sleeves not 3 as originally specified.
- i) Supply to masonry contractor hollow metal doors and pressed steel frames size as noted for valve pit structure, lift station and access to crawl space under chlorine storage. These to be Westeel manufacture.
- j) Supply 1 only portable aluminum ladder for access from pump room floor to suction pipe level. Ladder to be similar to that as specified R:4:20 (c).
- k) Supply and install supports for gas engine silencers as detailed on detail sheet #4.

ITEM NO. 17 - CERAMIC AND QUARRY TILE - SECTION U

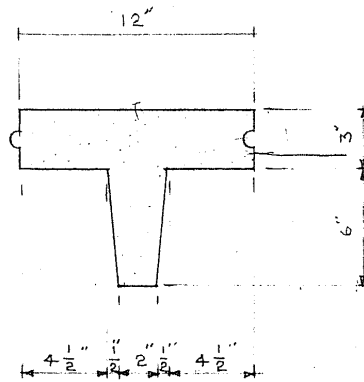
- a) Item U:3:4 Quarry tile to be 1/2" thick.
- b) Item U:3:6 to read "Tile grout for glazed tile shall be Medusa White Tile Grout cement as manufactured by Medusa Portland Cement Company.
- c) Item U:4:4 (a) - 1-5/8" to read 1-1/2".
- d) Item U:4:4 (c) - 3/4" to read 1".

ITEM NO. 18 - PAINTING - SECTION W

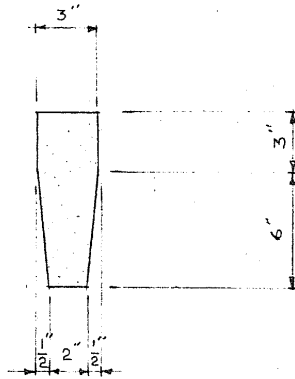
- a) All interior exposed concrete and concrete block to be painted 2 coats Northern Super Latex.



COPING DETAIL



WALL PANEL DETAIL



LOUVER DETAIL

SCALE  $\frac{1}{2}'' = 1'-0''$

REF. ADDENDA NO 1.

SMITH CARTER SEARLE ASSOCIATES  
ARCHITECTS AND ENGINEERS  
WINNIPEG AND BRANDON

CITY OF WINNIPEG  
WILKES AVE. PUMPING STATION

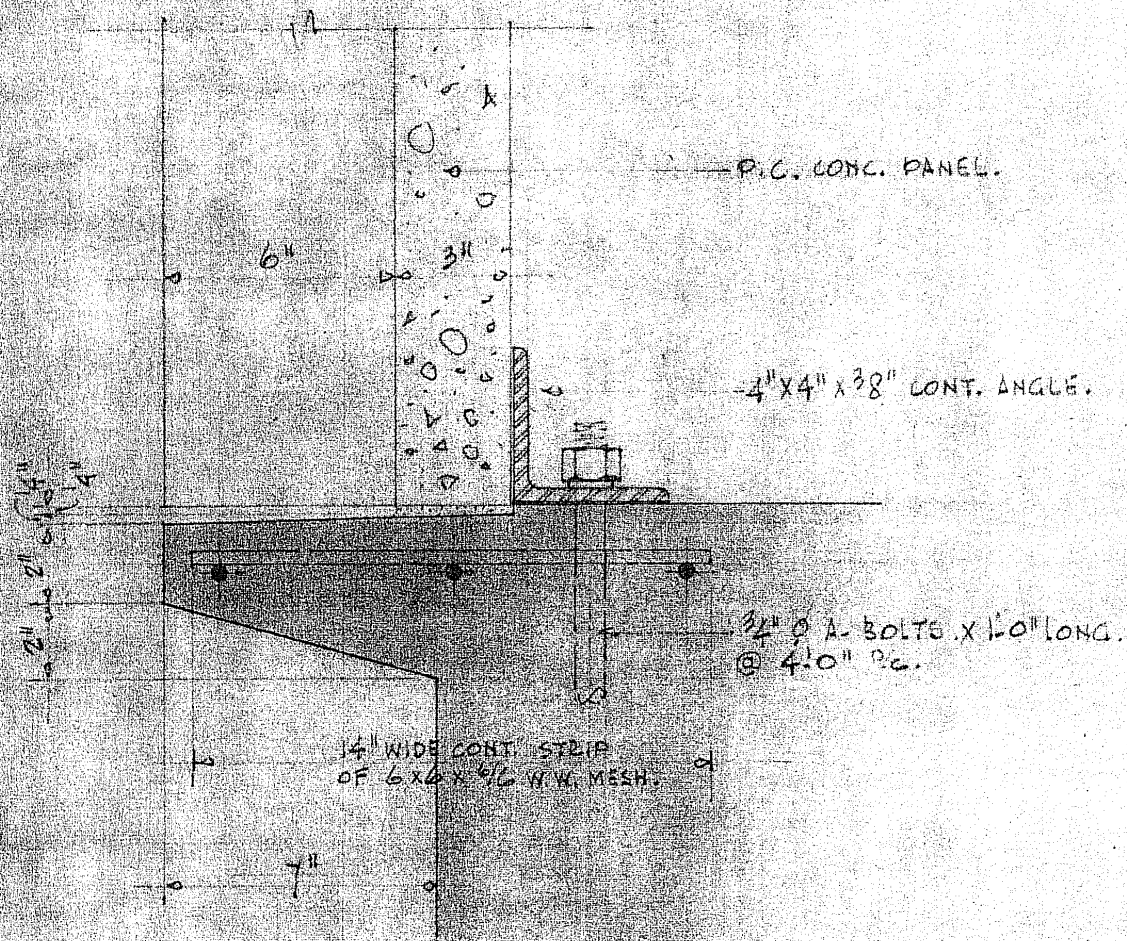
PRECAST CONCRETE DETAILS

FILE  
59 151

DATE  
24 NOV. 59

DETAIL SHEET  
2





TYPICAL SECTION THRU LEDGE  
ALL AROUND BLDG.

3" = 1'-0"