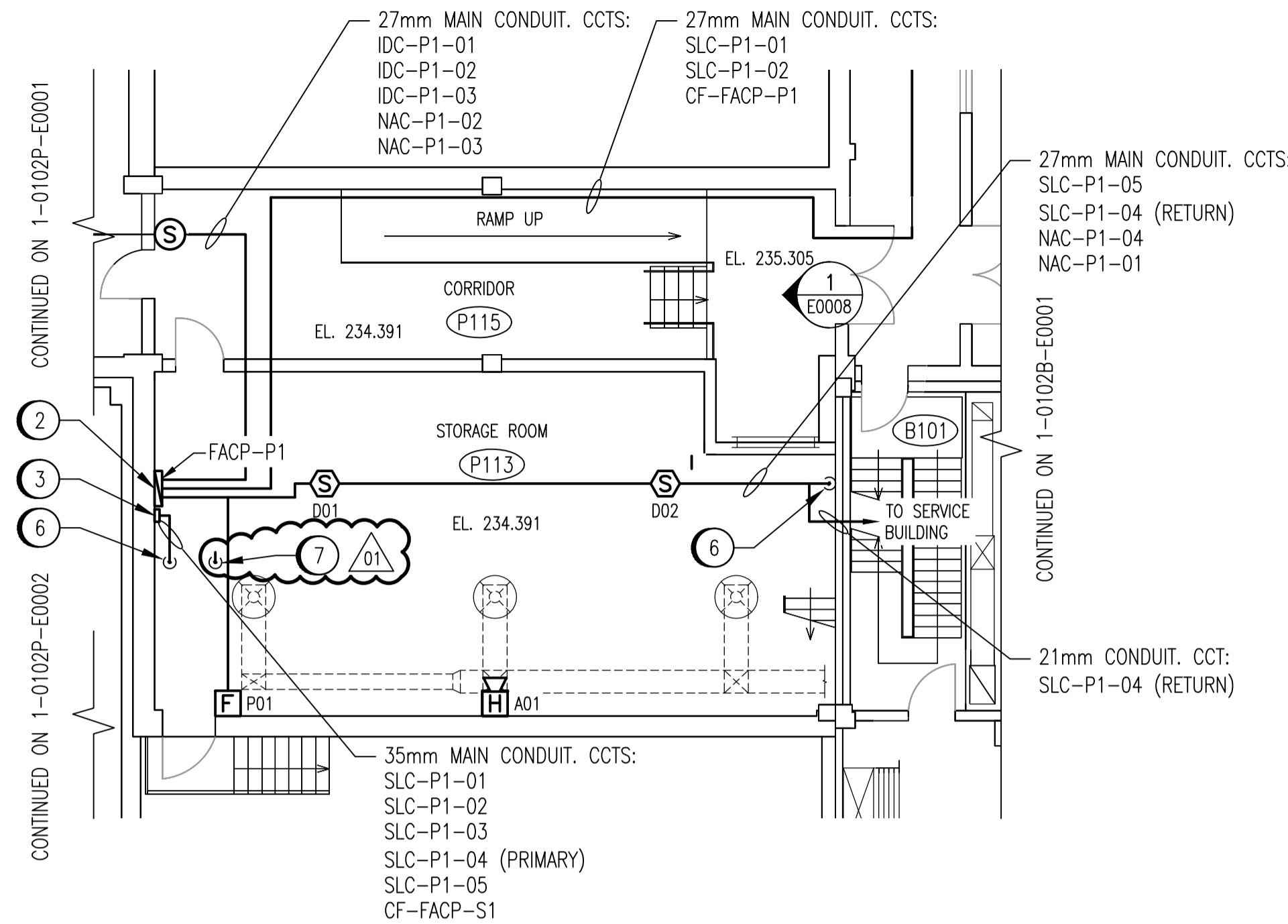
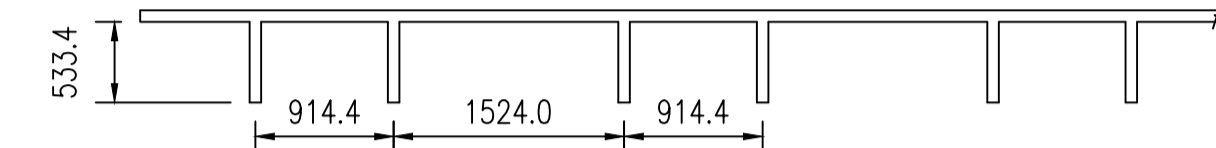
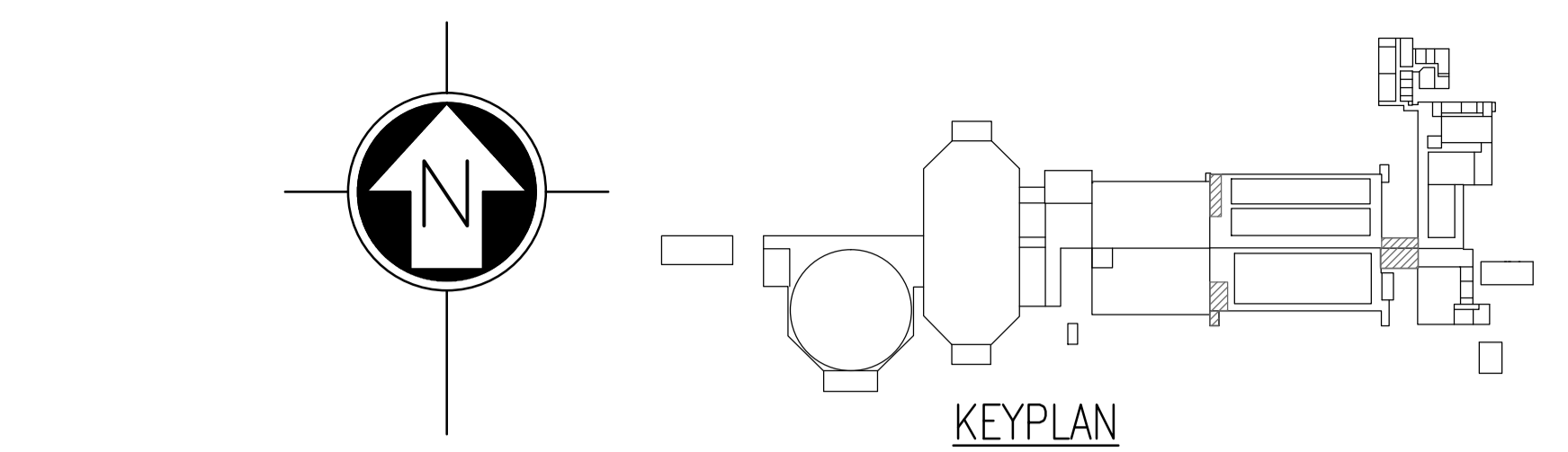


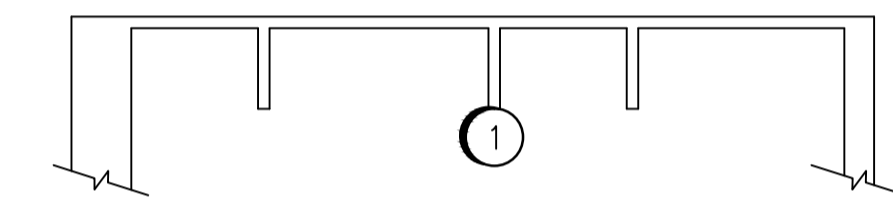
PRIMARY CLARIFIERS 1 & 2 PENTHOUSE
SCALE 1:100



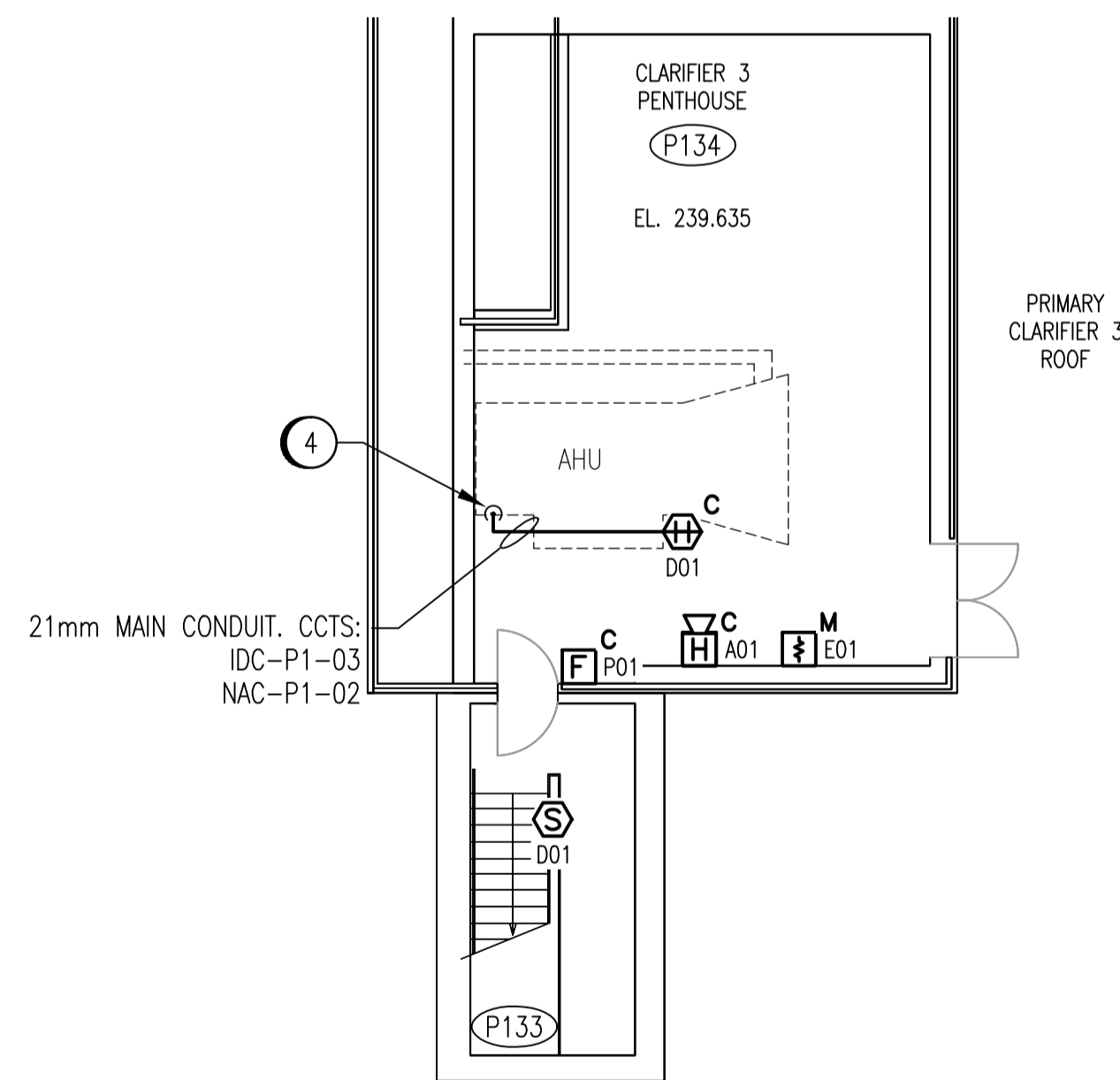
PRIMARY CLARIFIERS - STORAGE ROOM
SCALE 1:100



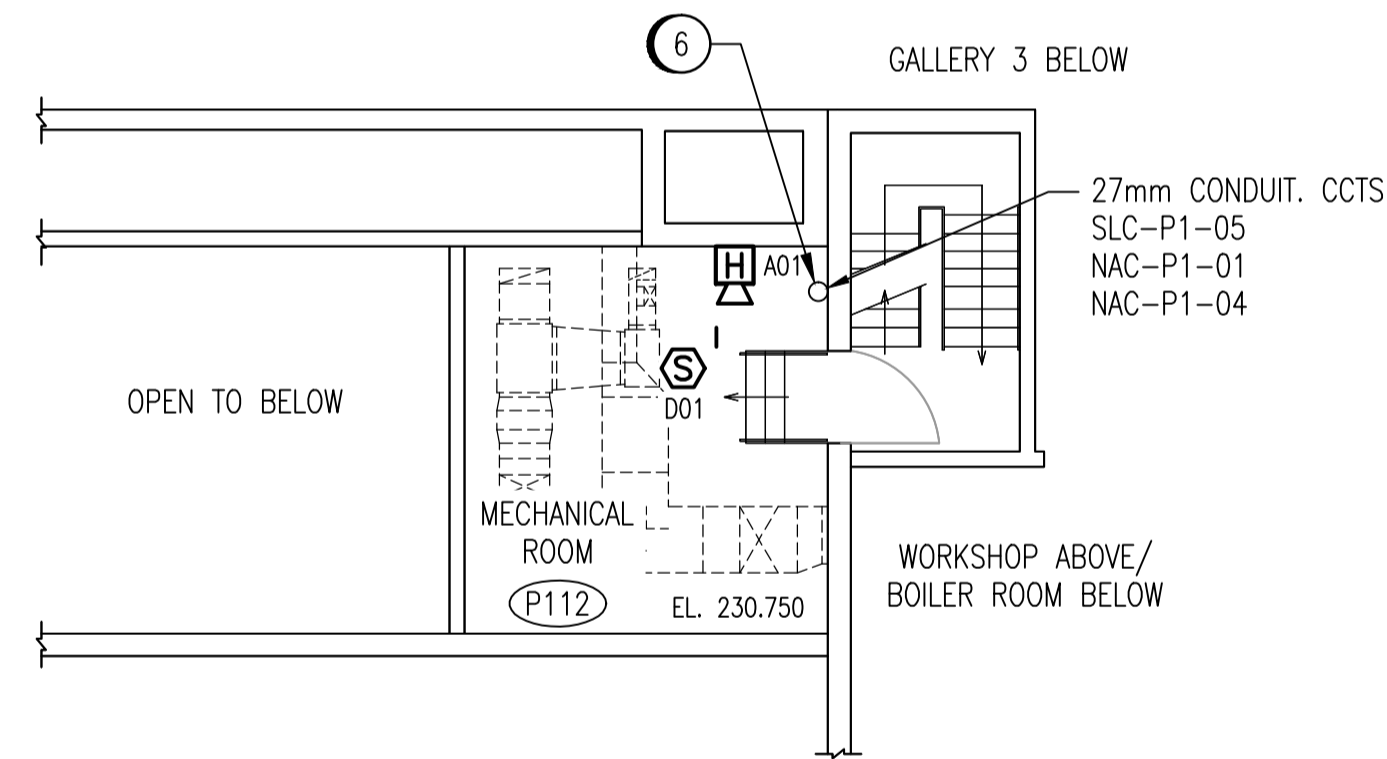
1 CEILING BEAM SECTION
SCALE 1:50



2 TOP OF STAIRWELL P121
SCALE 1:50



PRIMARY CLARIFIER 3 PENTHOUSE
SCALE 1:100

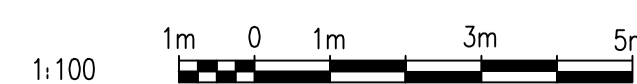


PRIMARY CLARIFIERS - MECHANICAL ROOM
SCALE 1:100

ROOM DETAILS			
ROOM ID	HEIGHT	CEILING TYPE	REF DWG
P112	3.41m	CONCRETE	SEP-283
P113	4.87m	CONCRETE	SEP-283
P115	4.87m	CONCRETE	SEP-283
P121	14.78m	STAIRWELL	SEP-054
P123	3.81m	SEE DETAIL 1	SEP-267
P133	16.29m	STAIRWELL	SEP-252
P134	3.75m	METAL CLADDING	SEP-248

CONSTRUCTION NOTES	
1	INSTALL SMOKE DETECTOR ON THE BOTTOM OF THE BEAM THAT IS CLOSEST TO THE CENTER OF THE STAIRWELL CEILING.
2	INSTALL FIRE ALARM CONTROL PANEL FACP-P1 AT THE LOCATION SHOWN. FACP POWER SUPPLY TO PROVIDE A MINIMUM OF 14A AT 24VDC. CONTRACTOR TO ENSURE THAT POWER SUPPLY IS ADEQUATELY SIZED TO POWER ALL DEVICES CONNECTED TO PANEL. PROVIDE CONCRETE HOUSEKEEPING PAD IF THE PANEL IS FLOOR MOUNTED.
3	INSTALL FIELDSERVER COMMUNICATIONS BRIDGE IN A SUITABLE ENCLOSURE ADJACENT TO THE FIRE ALARM CONTROL PANEL.
4	INSTALL PENETRATION AS PER DETAILS 1 AND 4 OF 1-0102A-E0008.
5	INSTALL PENETRATION AS PER DETAILS 1 AND 2 OF 1-0102A-E0008.
6	INSTALL PENETRATION AS PER DETAIL 1 OF 1-0102A-E0008. LOCATE AWAY FROM WALL TO AVOID FLOOR BEAMS.
7	REMOVE CONDUIT PENETRATION AND ASSOCIATED ABANDONED WIRING. REPAIR THE FLOOR TO MATCH EXISTING.

- NOTES:**
- THE AMBIENT TEMPERATURE IN THE PRIMARY CLARIFIER PENTHOUSE (P134) FALLS BELOW 0°C IN THE WINTER.
 - DEVICE TAGS ARE SHOWN IN SHORTHAND NOTATION. FULL DEVICE TAG FORMAT IS FAS-Pxxx-yyy, WHERE xxx IS THE ROOM NUMBER, AND yyy IS THE DEVICE IDENTIFIER.



NO.	REVISIONS	DATE	DESIGN	CHECK
01	REVISED - ADDENDUM 1	2011/04/19	CJR	TMC
00	ISSUED FOR TENDER, BID OPP. 209-2011	2011/03/11	EFB	CJR

		SNC-LAVALIN INC. 148 Nature Park Way Winnipeg, MB, Canada R3P 0X7 204-786-8080	
DESIGNED BY:	E. BOHNCKE	CHECKED BY:	C. REIMER
DRAWN BY:	E. BOHNCKE	APPROVED BY:	C. REIMER
SCALE:	AS SHOWN	RELEASED FOR CONSTRUCTION BY:	N. HARRINGTON
DATE:	2009/03/20	DATE:	2011/03/11
CONSULTANT NO.:	112577-0101-47DD-0043		

ENGINEER'S SEAL
ORIGINAL DRAWING SEALED BY:
C. J. REIMER
SNC-LAVALIN
MEMBER #21968
2011/03/25
REV. 00

THE CITY OF WINNIPEG WATER AND WASTE DEPARTMENT		
SOUTH END WATER POLLUTION CONTROL CENTRE FIRE ALARM UPGRADE PLAN LAYOUT FIRE ALARM - PRIMARY CLARIFIERS PENTHOUSES & STORAGE ROOM		
CITY DRAWING NUMBER	SHEET	REV. SIZE
1-0102P-E0003	001	01 A1

1-0102P-E0014	ELECTRICAL CLASSIFICATION PLAN
1-0102A-E0001	FIRE ALARM LEGEND AND DETAILS
DRAWING NUMBER	REFERENCE DRAWINGS