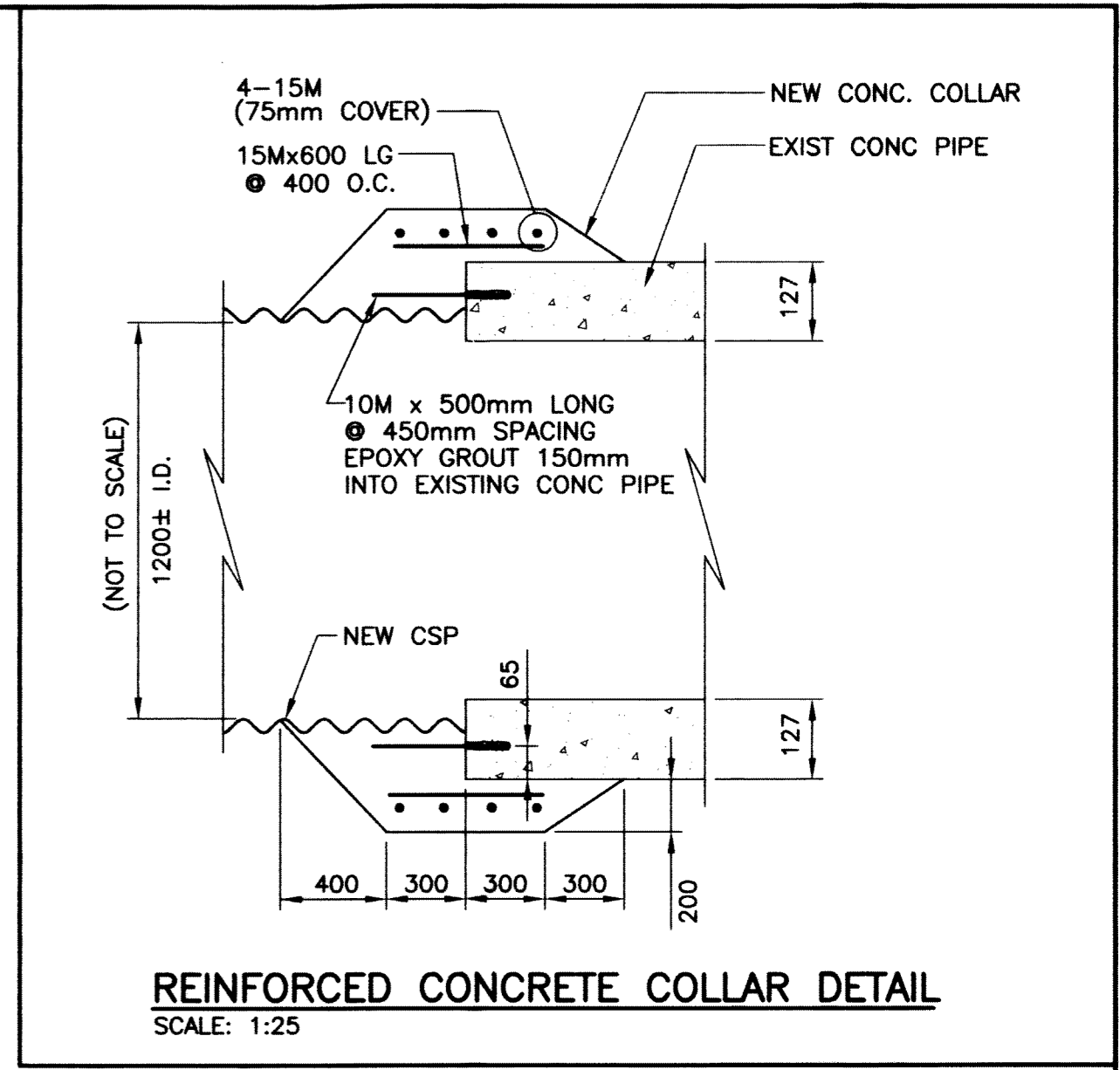


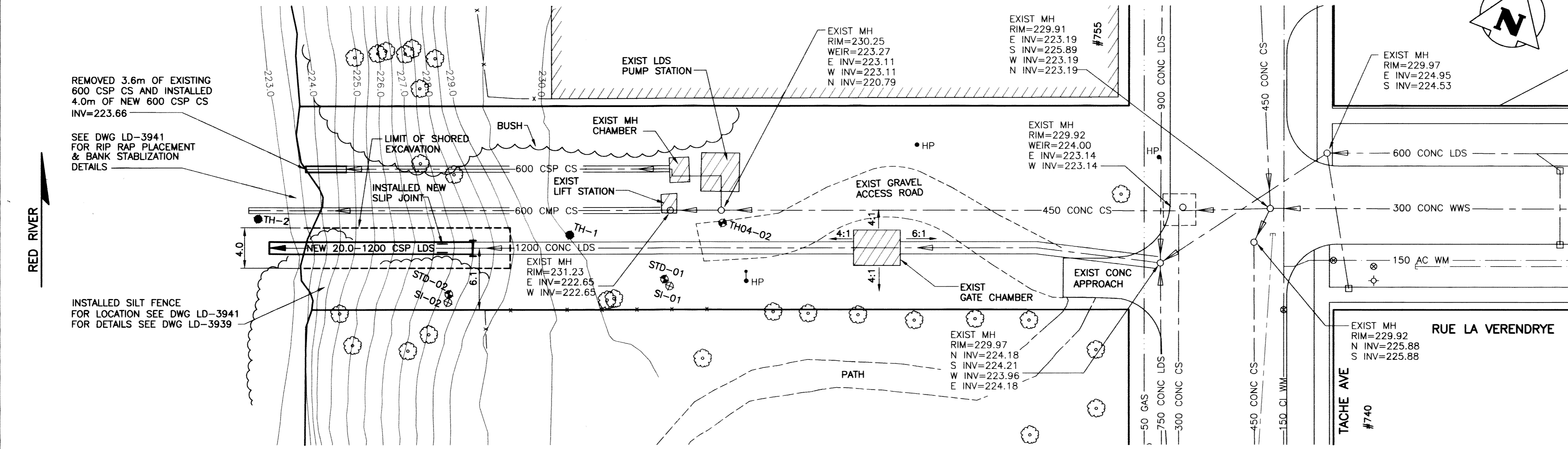
**PROFILE**  
SCALE: HOR 1:250  
VER 1:50



**REINFORCED CONCRETE COLLAR DETAIL**  
SCALE: 1:25

- NOTES:**
- CONCRETE**
- CONCRETE MATERIALS AND WORKMANSHIP WAS IN ACCORDANCE WITH CAN/CSA-A23.1/ A23.2 (LATEST). SEE BELOW FOR MIX REQUIREMENTS.
  - CONCRETE MATERIALS, FORMING, PLACING, FORM REMOVAL, REINFORCING, ETC. WAS TO ACI RECOMMENDATIONS AND ACCEPTABLE PRACTICE.
  - MIX WATER WAS POTABLE. CALCIUM CHLORIDE WAS NOT USED.
  - PROVIDED ADEQUATE FROST PROTECTION FOR CONCRETE DURING CURING PERIOD.
  - CONCRETE MIX DESIGN WAS PROPORTIONED AS FOLLOWS:  
28 DAY COMP. STRENGTH 30 MPa  
CEMENT TYPE MS  
W/C RATIO 0.45  
AGGREGATE SIZE (MAX.) 3/4"  
ENTRAINED AIR 4%-6%  
SLUMP (MAX.) 90mm (±10mm)
  - SUPER PLASTICIZER SUPPLIED FOR ALL POURS (SLUMP PRIOR TO ADDING PLASTICIZER WAS 100mm ± 20mm AND 200mm ± 25mm WITH PLASTICIZER).

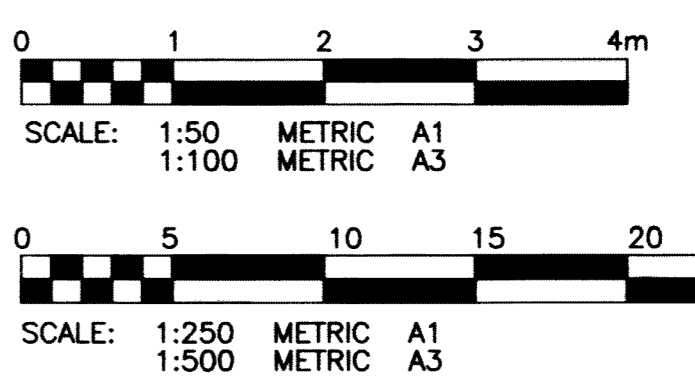
- GEO LEGEND**
- TH-1 KGS GROUP TESTHOLE (1999)
  - TH04-02 KGS GROUP TESTHOLE WITH STANDPIPE PIEZOMETER (2004)
  - SI-01 KGS GROUP TESTHOLE WITH SLOPE INCLINOMETER AND PNEUMATIC PIEZOMETER (2008)
  - STD-01 KGS GROUP TESTHOLE WITH STANDPIPE PIEZOMETER (2008)



**PLAN**  
SCALE: 1:250

**AS-CONSTRUCTED**  
WATER & WASTE DEPARTMENT  
PROJECT COMPLETION DATE 10 JUNE 2008

**PROPERTY LIMITS DELINEATION**  
DELINEATION OF PROPERTY LIMITS AS SHOWN ON THIS DWG DOES NOT REPRESENT A LEGAL SURVEY. KGS GROUP MAKES NO REPRESENTATION OR WARRANTY AS TO THE ACCURACY OF PROPERTY LIMITS DELINEATED ON THIS DWG, NOR ON THE DIMENSIONAL ACCURACY OF DWG FEATURES RELATIVE TO THOSE PROPERTY LIMITS.



**METRIC**  
WHOLE NUMBERS INDICATE MILLIMETRES  
DECIMALIZED NUMBERS INDICATE METRES

**APEGN**  
Certificate of Authorization  
KGS Group  
No. 245 Date: MAR 31, 2010

P:\PROJECTS\2007\07-0107-25\WWS\DWGS\TAGLE\RUE LA VERENDRYE-PLAN.DWG  
PLOT: 1:1 A1

150 WWS	WATERMAIN	150 WWS	HYDRO
300 LDS	HYDRANT VALVE	300 LDS	M.T.S.
250 WWS	LAND DRAINAGE SEWER	250 WWS	PROPERTY LINE
○	WASTE WATER SEWER	○	SURVEY BAR
○	MANHOLE	○	LIGHT STANDARD
□	CATCH BASIN	○	HYDRO POLE
▽	CURB INLET	○	GUY WIRE
+	JUNCTIONS	○	SIGN
+	CULVERT	○	BUSH LINE
+	GAS	○	FENCE
EXISTING	LEGEND-PLAN	PROPOSED	ELEVATION (32.231)

**LOCATION APPROVED UNDERGROUND STRUCTURES**

SUPV. U/G STRUCTURES COMMITTEE DATE

NOTE:  
LOCATION OF UNDERGROUND STRUCTURES AS SHOWN ARE BASED ON THE BEST INFORMATION AVAILABLE BUT NO GUARANTEE IS GIVEN THAT ALL EXISTING UTILITIES ARE SHOWN OR THAT THE GIVEN LOCATIONS ARE EXACT. CONFIRMATION OF EXISTENCE AND EXACT LOCATION OF ALL SERVICES MUST BE OBTAINED FROM THE INDIVIDUAL UTILITIES BEFORE PROCEEDING WITH CONSTRUCTION.

B.M. 34-016	ELEV. 230.003	S.E. COR. TACHE AVE. & RUE MESSAGER, TBLT. IN N. CONC. FOUNDATION OF WPG. WATERWORKS BOOSTER PUMPING STATION, 3.0m E. & 0.2m BELOW BRICK OF N.W. COR. OF BLDG.
2	RE-ISSUED AS CONSTRUCTED	29/03/10 RJH
1	AS CONSTRUCTED	01/06/08 RJH
0	ISSUED FOR TENDER	14/12/07 RJH
NO.	REVISIONS	DATE BY

**KGS GROUP**  
CONSULTING ENGINEERS & PROJECT MANAGERS  
WINNIPEG (204) 896-1209  
THUNDER BAY (807) 345-2233

DESIGNED BY RJH  
CHECKED BY RJH  
DRAWN BY DW  
APPROVED BY

HOR. SCALE: 1:250  
VERTICAL: 1:50

RELEASED FOR CONSTRUCTION:  
DATE 30/11/07

ENGINEER'S SEAL  
**R.J. HOUSTON**  
Member  
Professional Engineer

CONSULTANT DRAWING NO.  
**07-0107-25 01**

**THE CITY OF WINNIPEG**  
WATER & WASTE DEPARTMENT

**2007 OUTFALL REPAIRS**  
**RUE LA VERENDRYE OUTFALL (RR-59)**

SHEET 01 OF 05  
CAD FILE DRAWING NUMBER  
RUE LA VERENDRYE-PLAN.DWG  
CITY DRAWING NUMBER  
**LD-3938**