

LEGEND

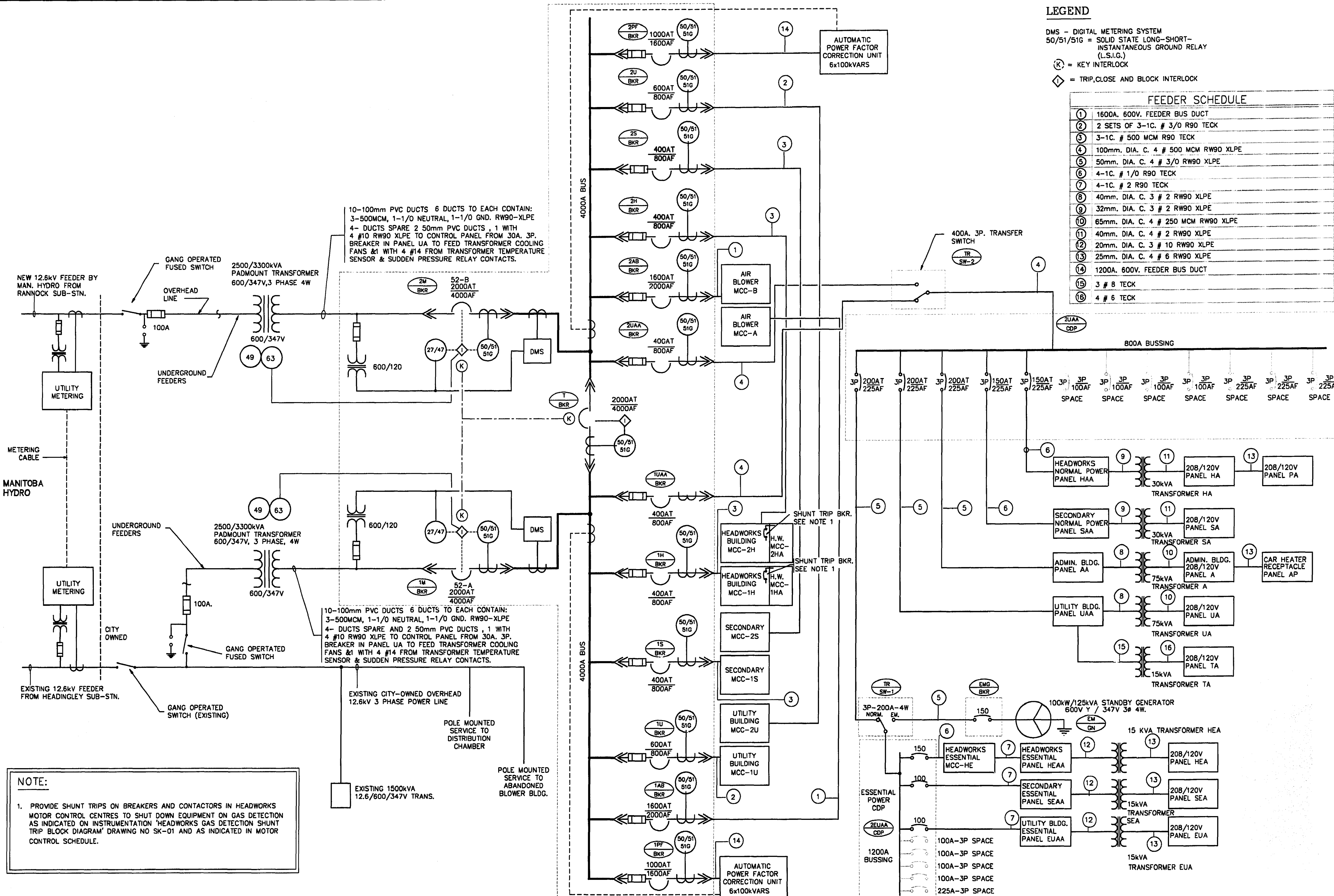
DMS - DIGITAL METERING SYSTEM
 50/51/51G = SOLID STATE LONG-SHORT-INSTANTANEOUS GROUND RELAY (L.S.I.G.)

⊞ = KEY INTERLOCK

◊ = TRIP, CLOSE AND BLOCK INTERLOCK

FEEDER SCHEDULE

1	1600A. 600V. FEEDER BUS DUCT
2	2 SETS OF 3-1C. # 3/0 R90 TECK
3	3-1C. # 500 MCM R90 TECK
4	100mm. DIA. C. 4 # 500 MCM RW90 XLPE
5	50mm. DIA. C. 4 # 3/0 RW90 XLPE
6	4-1C. # 1/0 R90 TECK
7	4-1C. # 2 R90 TECK
8	40mm. DIA. C. 3 # 2 RW90 XLPE
9	32mm. DIA. C. 3 # 2 RW90 XLPE
10	65mm. DIA. C. 4 # 250 MCM RW90 XLPE
11	40mm. DIA. C. 4 # 2 RW90 XLPE
12	20mm. DIA. C. 3 # 10 RW90 XLPE
13	25mm. DIA. C. 4 # 6 RW90 XLPE
14	1200A. 600V. FEEDER BUS DUCT
15	3 # 8 TECK
16	4 # 6 TECK

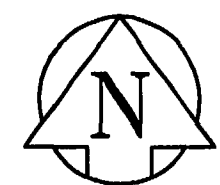


NOTE:
 1. PROVIDE SHUNT TRIPS ON BREAKERS AND CONTACTORS IN HEADWORKS MOTOR CONTROL CENTRES TO SHUT DOWN EQUIPMENT ON GAS DETECTION AS INDICATED ON INSTRUMENTATION 'HEADWORKS GAS DETECTION SHUNT TRIP BLOCK DIAGRAM' DRAWING NO SK-01 AND AS INDICATED IN MOTOR CONTROL SCHEDULE.

THE ENGINEER THAT SEALED THIS DRAWING IS RESPONSIBLE FOR ONLY THE AS-CONSTRUCTED CHANGES ON THIS DRAWING.
 THE ORIGINAL DESIGN WAS THE RESPONSIBILITY OF THE DESIGN ENGINEER WHO SEALED THE ISSUED FOR TENDER DRAWINGS IN 1991.

REID, CROWTHER & PARTNERS LIMITED
 WINNIPEG
AS CONSTRUCTED
 DATE: APR 23/99

detail symbol
 A detail number
 B drawing where detail shown
 C cross reference to drawing where detail taken



B.M.	69-006		
ELEV.	237.636 m		
NO.	REVISIONS	DATE	BY
1	AS BUILT	93/11	DE
0	ISSUED FOR TENDER		

Reid Crowther

DESIGNED BY	LT	CHECKED BY	DJS
DRAWN BY	EJS	APPROVED BY	
HOR. SCALE:	N.T.S.	RELEASED FOR CONSTRUCTION:	
VERTICAL:		DATE	91-04-29

ENGINEER'S SEAL

 CONSULTANT DRAWING NO. 6910 - LE3

THE CITY OF WINNIPEG
 WORKS AND OPERATIONS DIVISION
 WATERWORKS WASTE AND DISPOSAL DEPT.
 WEST END WATER POLLUTION CONTROL CENTRE
 AREA L - GENERAL
 ELECTRICAL SINGLE LINE DIAGRAM
 CITY DRAWING NUMBER: SHEET OF
WEP-79

File # WS 10/29