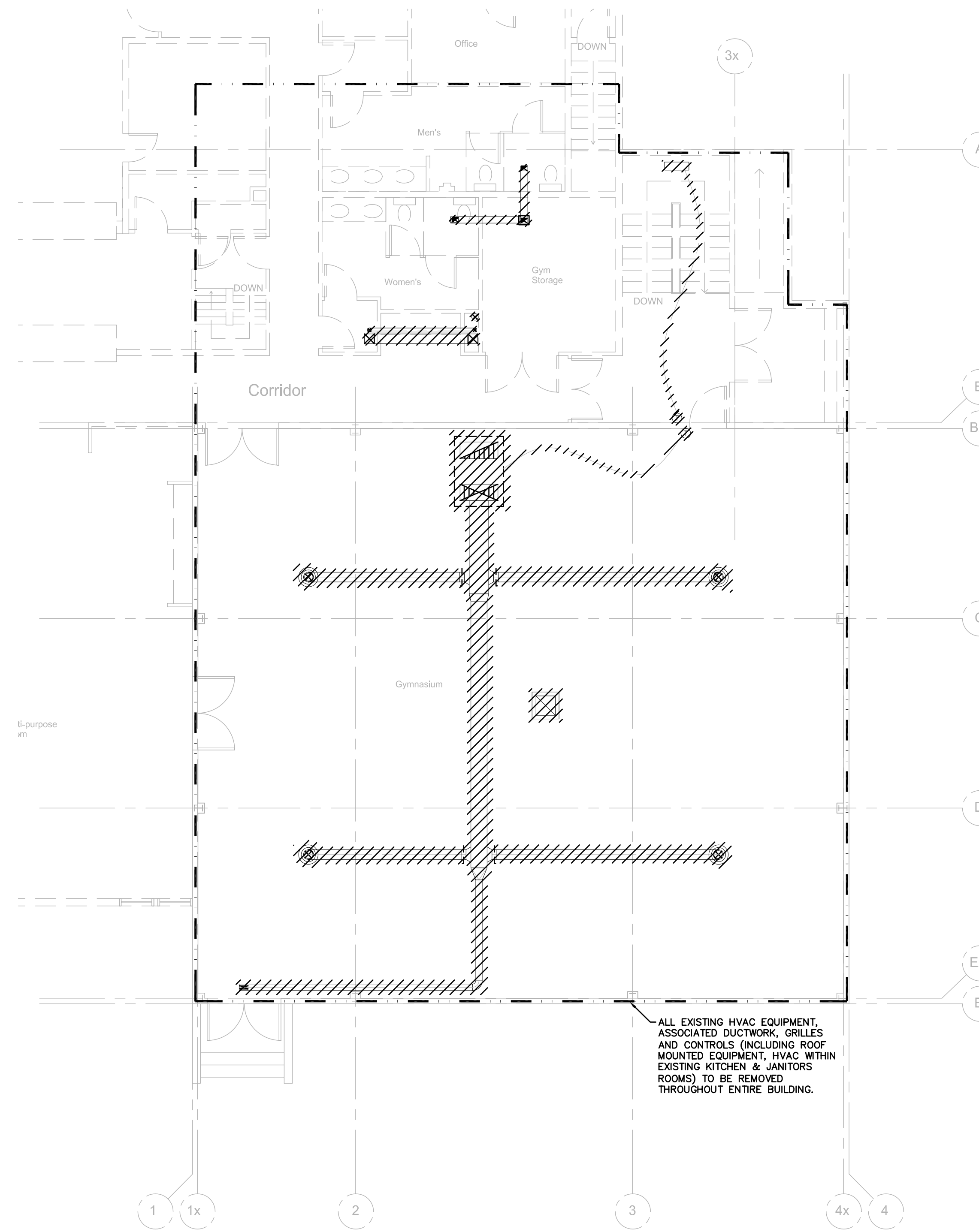
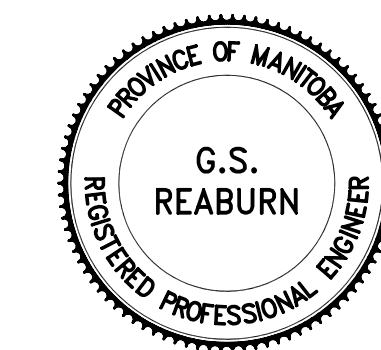


1 BASEMENT PLAN- HVAC DEMOLITION LAYOUT
 RM14 SCALE: 1:100



2 MAIN FLOOR PLAN- HVAC DEMOLITION LAYOUT
 RM14 SCALE: 1:100

GENERAL NOTES:
 1. THIS DRAWING IS DIAGRAMMATIC ONLY. DO NOT SCALE.
 2. CONTRACTOR TO CONFIRM EXACT LOCATION AND SIZES OF EXISTING EQUIPMENT ON SITE PRIOR TO TENDER.



D ISSUED FOR TENDER FEB 26, 2010
C ISSUED FOR 99% REVIEW FEB 10, 2010
B ISSUED FOR 90% REVIEW JAN 08, 2010
A ISSUED FOR 60% REVIEW DEC 02, 2009

This drawing must not be scaled.
 The general Contractor must verify all dimensions, datums and levels prior to commencement of work. All errors and omissions must be reported immediately to the Architect.
 Variations and modifications to work shown on this drawing shall not be carried out without written permission from the Architect.
 This drawing is the exclusive property of the Architect and cannot be reproduced without written permission of the Architect. Reproduction must bear the name of the Architect. Copyright © 2009.

MCW / AGE
 Consulting Professional Engineers
 210-1521 Wellington Avenue
 Winnipeg, Manitoba, R2M 0C4
 Phone: (204) 779-7900 Fax: (204) 779-1119
 E-Mail: mcw_age@mcw.com
 5878

harold funk architect inc.
 Harold Funk Architect Inc.
 Architecture and Urban Design
 491-55 Donald Street, Winnipeg, Manitoba R3C 1L8
 T (204) 943-9087 info@funkarchitect.com
 F (204) 949-9231 funkarchitect.com

project
SINCLAIR COMMUNITY CENTRE
ADDITION & RENOVATIONS
 490 Sinclair Street, Winnipeg

sheet title
BASEMENT AND MAIN FLOOR PLAN- HVAC DEMOLITION LAYOUT

project number: 5878 drawing number:
 scale: N.T.S. **RM14**
 drawn by: KLG
 approved by: GSR
 date: 2010-02-26