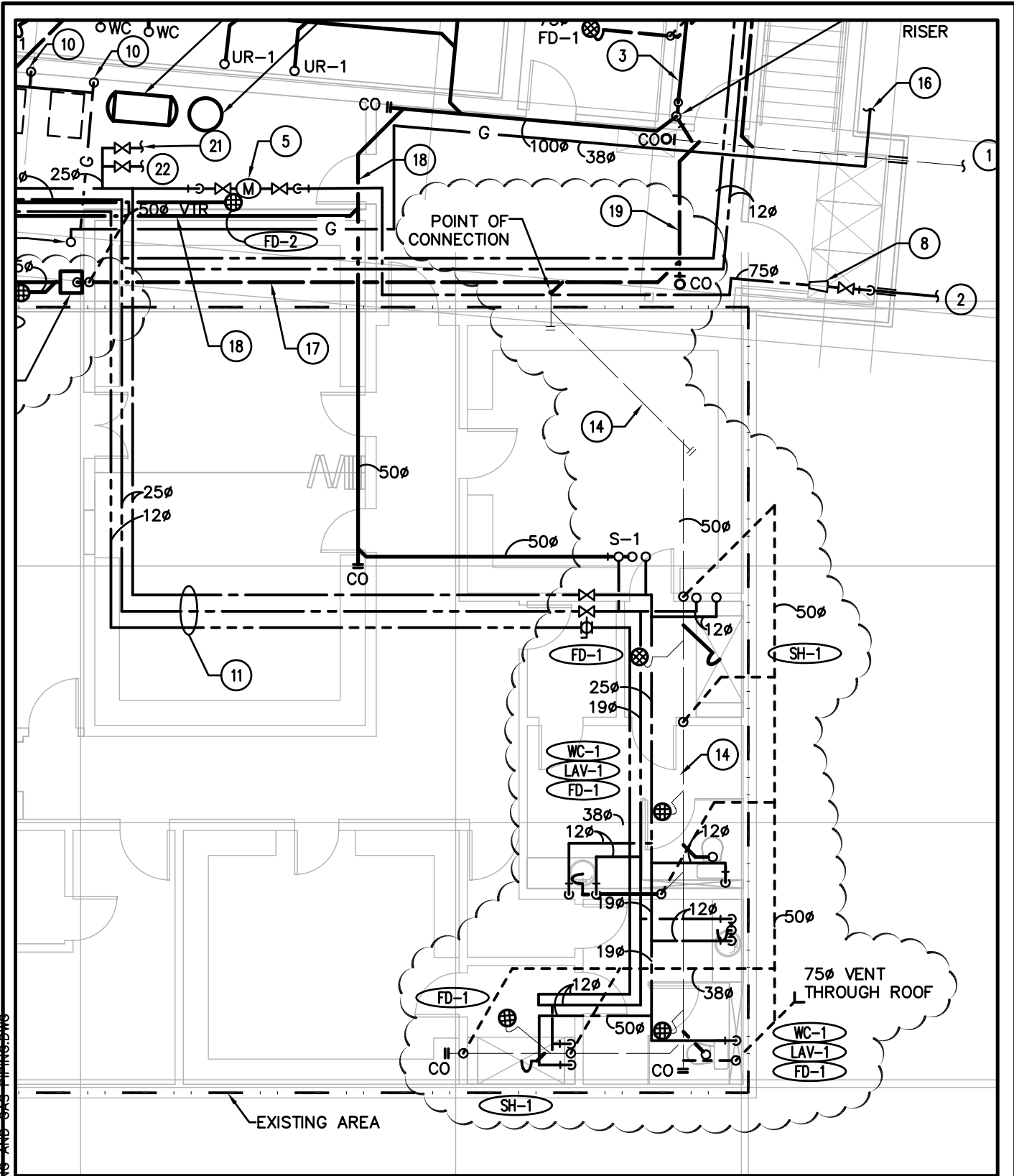


PLOTTED ON 2010-4-5 BY MARIO GICANA
 DOCUMENT SAVED IN H:\5800\5878\MILESTONE\2010-03-31_ISSUED FOR ADD 02
 MCW\5878\5878-BASEMENT PLUMBING AND GAS PIPING.DWG



5878



MCW / AGE

Consulting Professional Engineers

210-1821 Wellington Avenue

Winnipeg, Manitoba, R3H 0G4

Phone - (204) 779-7900 Fax - (204) 779-1119

E-Mail: mcw_wpg@mcw.com

PROJECT:

SINCLAIR PARK COMMUNITY CENTER

DESCRIPTION:

BASEMENT PLAN- PLUMBING AND GAS PIPING LAYOUT

DATE:

2010-31-03

DRAWN BY:

MG

SCALE:

1:100

REF. DWG. NO.

M3.1

DWG. NO.

RM-04

ISSUED WITH:

02-ME