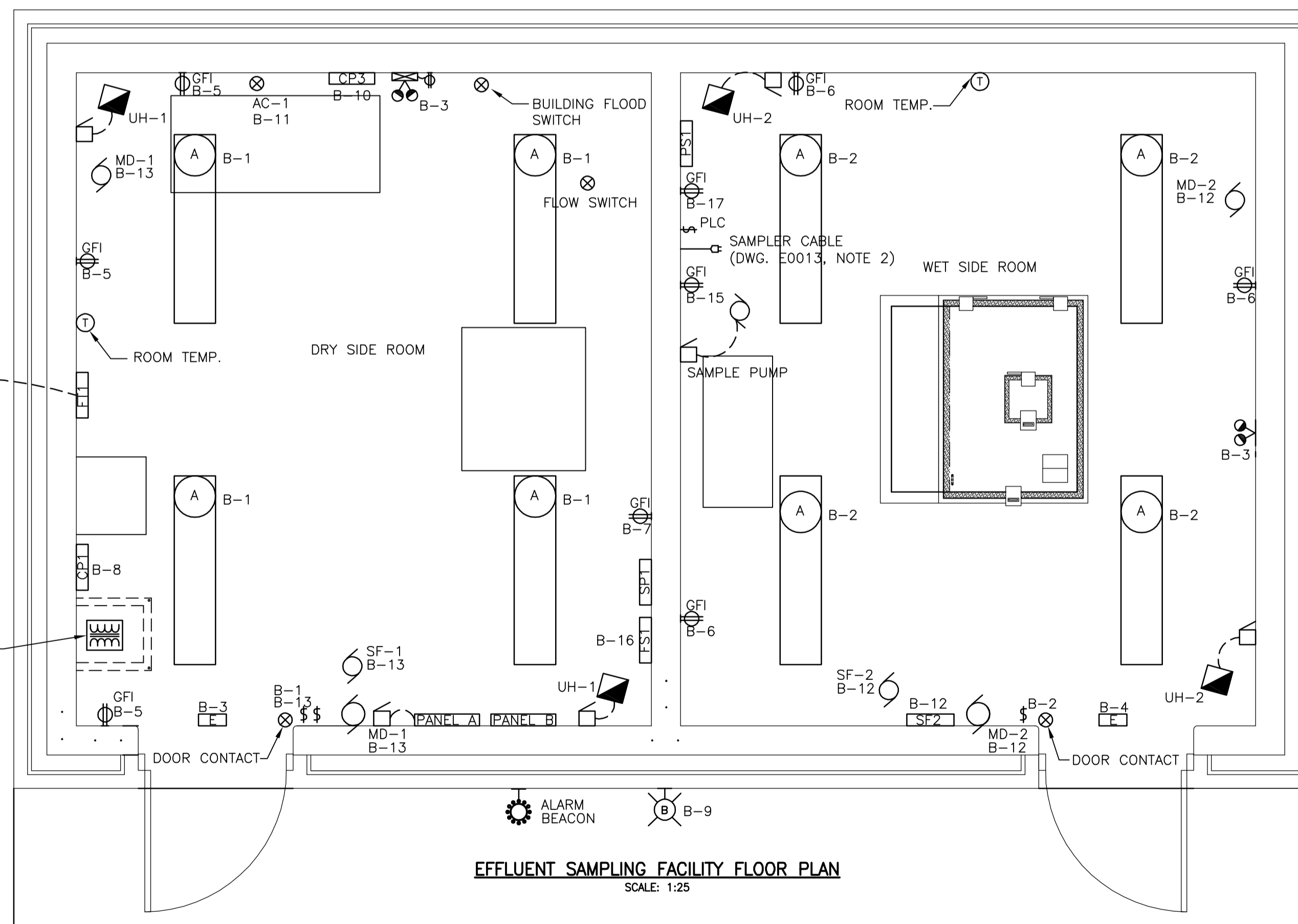


- LEGEND**
- (A) FLUORESCENT LIGHT FIXTURE TYPE "A"
  - (B) FLUORESCENT LIGHT FIXTURE TYPE "B"
  - (C) FLUORESCENT LIGHT FIXTURE TYPE "C"
  - (D) FLUORESCENT LIGHT FIXTURE TYPE "D"
  - (F) EXTERIOR FLOOD LIGHT
  - (E) EXIT SIGN
  - (EM) EMERGENCY LIGHT FIXTURE C/W BATTERY BANK
  - (DL) DUAL LAMP REMOTE HEADS
  - (AH) ALARM HORN
  - (EMO) ELECTRIC MOTOR
  - (DEV) DEVICE
  - (TR) TRANSFORMER
  - (OH) OVERHEAD HYDRO SERVICE MAST
  - (DR) DUPLEX RECEPTACLE
  - (GR) GFI RECEPTACLE
  - (TO) TELEPHONE OUTLET
  - (SW) SINGLE POLE WALL SWITCH
  - (3WS) 3 WAY WALL SWITCH
  - (VSS) VARIABLE SPEED SWITCH
  - (PLS) PILOT LIGHT SWITCH
  - (DS) DISCONNECT SWITCH
  - (UH) UNIT HEATER
  - (T) THERMOSTAT

- LEGEND**
- CP1 - MAIN CONTROL PANEL
  - FT1 - FLOW METER TRANSMITTER
  - CP3 - SAMPLER CONTROL PANEL
  - SP1 - SAMPLE PUMP ENCLOSED MOTOR STARTER ENCLOSURE
  - SF2 - SUPPLY FAN SF-2 CONTROL PANEL
  - FT1 - FLOW SWITCH ENCLOSURE
  - PS1 - PORTABLE SAMPLER ALARM BOX/3-WAY VALVE PLATE

- NOTES**
- 1 - WET SIDE ROOM IS HUMID CORROSIVE AREA. ALL ELECTRICAL EQUIPMENT SHALL BE INSTALLED IN ACCORDANCE WITH CATEGORY 2, SECTION 22 OF THE CANADIAN ELECTRICAL CODE. DRY SIDE ROOM IS CLASSIFIED AS AN ORDINARY AREA.
  - 2 - INSTALL ONE NEW BREAKER 90A, 600V, 3P IN PANEL "A" IN UV BUILDING ELECTRICAL ROOM. BREAKER TO MATCH EXISTING IN PANEL "A".
  - 3 - INSTALL ONE RS-232 TO FIBER MEDIA CONVERTER BLACK BOX #MED100A, C/W #PSD100 12VDC POWER SUPPLY IN PANEL "C" IN UV BUILDING ELECTRICAL ROOM. CONNECT FIBER MEDIA CONVERTER TO EXISTING MODICON #BM85S232 MODBUS PLUS BRIDGE/MUX. (REFER TO DRAWING 1-0102A-D-E0001-003-00).
  - 4 - INSTALL TWO, MULTIMODE 62.5/125µm, 6-STRAND, ARMORED LOOSE-TUBE FIBER OPTIC CABLES BETWEEN NEW SAMPLING FACILITY AND UV BUILDING ELECTRICAL ROOM. (ONE CABLE REDUNDANT). FIBER OPTIC CABLE TO BE SUITABLE FOR DIRECT BURIAL.



METRIC  
WHOLE NUMBERS INDICATE MILLIMETRES  
DECIMALIZED NUMBERS INDICATE METRES

**APEGM**  
Certificate of Authorization  
Stantec Consulting Ltd.  
No. 1301 Expiry: April 30, 2010

LOCATION APPROVED UNDERGROUND STRUCTURES		B.M. 81-007 ELEV. 230.438
SUPV. U/G STRUCTURES COMMITTEE	DATE	
NOTE: LOCATION OF UNDERGROUND STRUCTURES AS SHOWN ARE BASED ON THE BEST INFORMATION AVAILABLE BUT NO GUARANTEE IS GIVEN THAT ALL EXISTING UTILITIES ARE SHOWN OR THAT THE GIVEN LOCATIONS ARE EXACT. CONFIRMATION OF EXISTENCE AND EXACT LOCATION OF ALL SERVICES MUST BE OBTAINED FROM THE INDIVIDUAL UTILITIES BEFORE PROCEEDING WITH CONSTRUCTION.		
NO.	REVISIONS	DATE BY
1	REVISED AS PER ADDENDUM #2	09.10.30
A	ISSUED FOR TENDER	09.10.13

Stantec Consulting Ltd.		ENGINEER'S SEAL
905 Waverley Street, Winnipeg, Manitoba Tel 204-489-5900 Fax 204-453-9012		ORIGINAL SEALED BY S. TREBIC P. ENG. 09/10/13
DESIGNED BY	S.T.	CHECKED BY
DRAWN BY	S.T.	APPROVED BY
HOR. SCALE:	AS NOTED	RELEASED FOR CONSTRUCTION:
VERTICAL:		DATE
DATE	09.09.18	DATE

THE CITY OF WINNIPEG WATER AND WASTE DEPARTMENT		SHEET 1 OF 1
<b>Winnipeg</b>		
<b>SOUTH END WATER POLLUTION CONTROL CENTRE INSTALLATION OF OUTFALL PIPE, EFFLUENT SAMPLING BUILDING AND ASSOCIATED WORKS SITE PLAN, FLOOR PLAN TRENCH DETAILS</b>		
BID OPPORTUNITY NO. <b>709-2009</b>	CITY DRAWING NUMBER <b>1-0102A-E0011-001-01</b>	