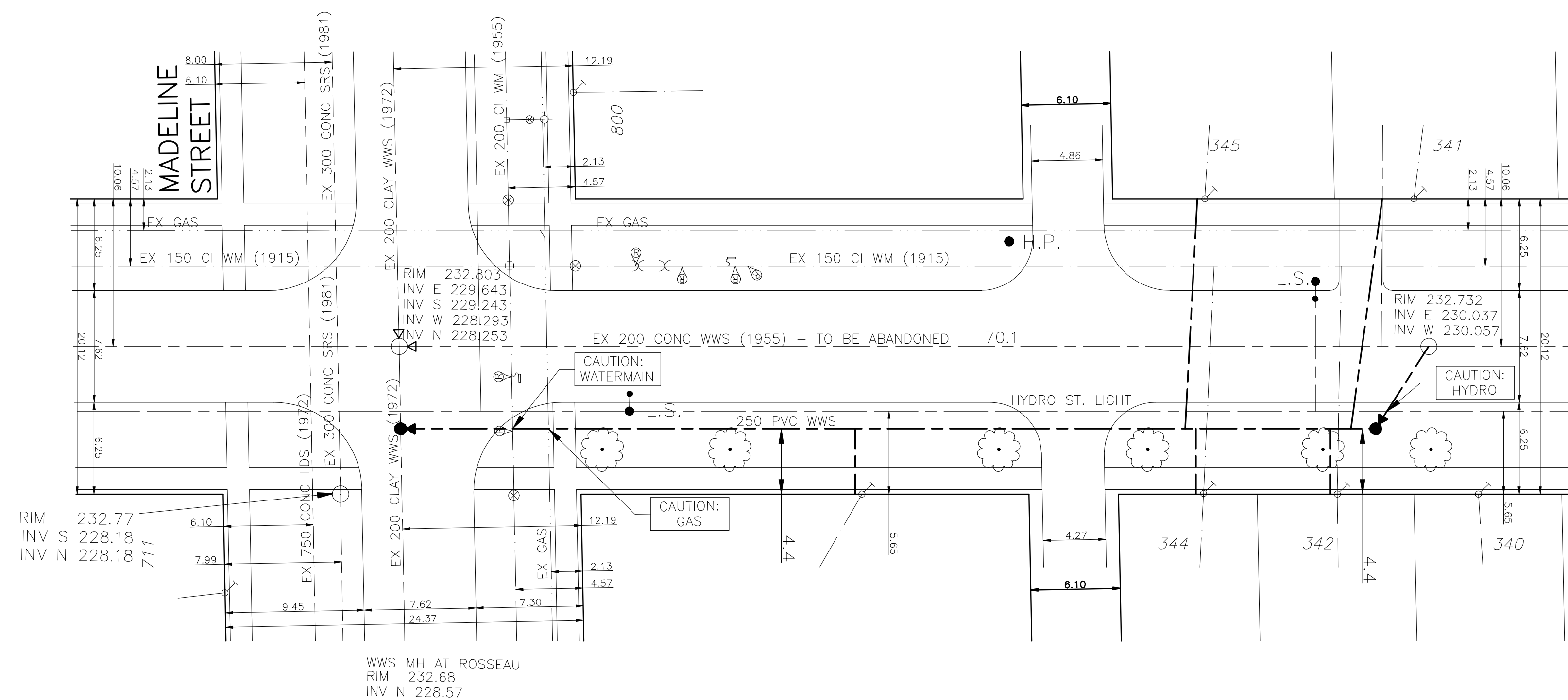
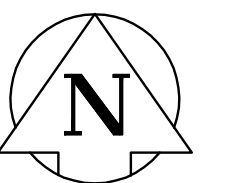


CHAINAGE ALONG NORTH PROPERTY LINE OF HARVARD AVENUE WEST
HARVARD AVENUE WEST



METRIC
WHOLE NUMBERS INDICATE MILLIMETRES
DECIMALIZED NUMBERS INDICATE METRES



- CONSTRUCTION NOTES:**
1. LOCATION OF UNDERGROUND STRUCTURES AS SHOWN ARE BASED ON THE BEST INFORMATION AVAILABLE. NO GUARANTEE IS GIVEN THAT ALL EXISTING UTILITIES ARE SHOWN OR THAT THE GIVEN LOCATIONS ARE EXACT.
 2. CONFIRMATION OF EXISTENCE AND EXACT LOCATION OF ALL SERVICES MUST BE OBTAINED FROM THE INDIVIDUAL UTILITIES BY THE CONTRACTOR BEFORE PROCEEDING WITH CONSTRUCTION.
 3. CONTRACTOR TO EXPOSE EXISTING SEWER MAINS AT ALL CONNECTION LOCATIONS TO ALLOW ENGINEER TO VERIFY EXISTING INVERTS, MATERIAL TYPE AND SIZE PRIOR TO CONSTRUCTION.
 4. SEWER TO BE INSTALLED BY TRENCHLESS METHODS.
 5. BACKFILL TO BE CLASS 5 WITHIN BOULEVARD AND CLASS 3 WHEN WITHIN PAVEMENT/SIDEWALK OR WHEN WITHIN 1.0M OF PAVEMENT OR SIDEWALK.
 6. ALL SERVICES TO BE RENEW TO THE PROPERTY LINE.
 7. ALL SERVICES TO HAVE MIN. 1.0% SLOPE.
 8. ALL MANHOLES TO HAVE STD. 1200 DIA. BASE UNLESS OTHERWISE INDICATED.
 9. CONTRACTOR TO MAINTAIN ALL EXISTING SEWER FLOWS DURING CONSTRUCTION.
 10. DESCRIPTION OF PROPERTY LIMITS, AND EXISTING AND/OR PROPOSED FEATURES RELATIVE TO THESE LIMITS AS SHOWN ON THIS DRAWING DO NOT REPRESENT A LEGAL SURVEY. GENIVAR MAKES NO REPRESENTATION OR GUARANTEE THAT THE PROPERTY LIMIT INFORMATION IS ACCURATE. GENIVAR ACCEPTS NO RESPONSIBILITY FOR DAMAGES, IF ANY, SUFFERED BY ANY THIRD PARTY AS A RESULT OF DECISIONS OR ACTIONS BASED ON THIS DRAWING.

---	WATERMAIN	---	REDUCER	---	150mm W.W.	---	WATERMAIN	---	150mm W.W.		
⊕	HYDRANT	⊕	PLUG	⊕	300mm L.D.S.	⊕	VALVE	⊕	300mm L.D.S.		
⊗	VALVE	⊗	TRAFFIC SIGNAL	⊗	250mm W.W.S.	⊗	LAND DRAINAGE SEWER	⊗	250mm W.W.S.		
---	LAND DRAINAGE SEWER	---	GAS	---	---	---	WASTE WATER SEWER	---	---		
---	WASTE WATER SEWER	---	HYDRO	---	---	---	JUNCTIONS	---	---		
○	MANHOLE	●	M.T.S.	---	---	---	CULVERT	---	---		
□	CATCH BASIN	■	SURVEY BAR	---	---	---	---	---	---		
△	CURB INLET	▲	CURB STOP	---	---	---	---	---	---		
+	TEE	+	C.B. LEAD	---	---	---	---	---	---		
⋈	BEND	⋈	TREE	---	---	---	---	---	---		
⊖	ANODE	⊖	LAMP STANDARD	---	---	---	---	---	---		
---	EXISTING	---	LEGEND - PLAN	---	PROPOSED	---	EXISTING	---	LEGEND - PROFILE	---	PROPOSED

LOCATION APPROVED

SUPV. U/G STRUCTURES DATE COMMITTEE

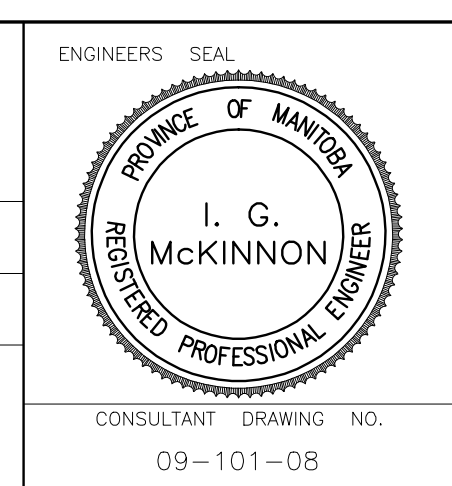
NOTE:
LOCATION OF UNDERGROUND STRUCTURES AS SHOWN ARE BASED ON THE BEST INFORMATION AVAILABLE BUT NO GUARANTEE IS GIVEN THAT ALL EXISTING UTILITIES ARE SHOWN OR THAT THE GIVEN LOCATIONS ARE EXACT. CONFIRMATION OF EXISTENCE AND EXACT LOCATION OF ALL SERVICES MUST BE OBTAINED FROM THE INDIVIDUAL UTILITIES BEFORE PROCEEDING WITH CONSTRUCTION.

B.M. ELEV. 232.577	ZONE 30, No. 44 (878495)
DESIGNED BY DJ	CHECKED BY SM
DRAWN BY DJ	APPROVED BY IMcK
HOR. SCALE: 1:250	RELEASED FOR CONSTRUCTION
VERT. SCALE: 1:50	DATE
1 BID OPPORTUNITY 588-2009	AUG 09 DJ
NO. REVISIONS	DATE BY

GENIVAR
10 PRAIRIE WAY WINNIPEG, MANITOBA R2J 3J8
PH: (204)-477-6650 FAX: (204)-474-2864

DESIGNED BY DJ
DRAWN BY DJ
HOR. SCALE: 1:250
VERT. SCALE: 1:50
DATE AUG 13 2009

CHECKED BY SM
APPROVED BY IMcK
RELEASED FOR CONSTRUCTION
DATE



THE CITY OF WINNIPEG
WATER AND WASTE DEPARTMENT

2009 CAPITAL WORKS
SEWER RENEWALS
HARVARD AVENUE WEST
MH AT MADELINE STREET TO
1ST MH EAST OF MADELINE STREET

Winnipeg

CONSULTANT DRAWING NO. 09-101-08

SHEET 1 OF 1
CITY DRAWING NO. 9067