

**SYMBOL SCHEDULE**

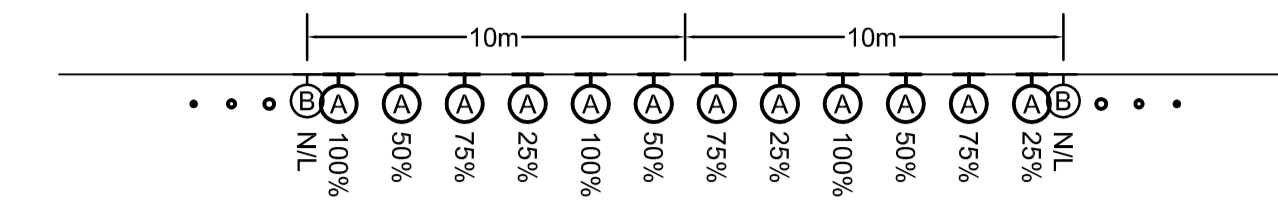
Ⓜ Wall mounted luminaire. 'A' denotes type.

LUMINAIRE SCHEDULE			
TYPE	DESCRIPTION	CATALOG NUMBER	LAMPS
A	IP66 RATED TUNNEL FLOODLIGHT MOUNTED @ 4.5m A.F.G.	HOLOPHANE TPF 400HP 34 K P 3 G PS	1-400W HPS
B	NIGHT LEVEL WALL PACK C/W QUARTZ RESTRIKE MOUNTED @ 4.0m A.F.G.	HOLOPHANE MW 100HP 34 G PS SPEC	1-100W HPS + 1-250W QZ

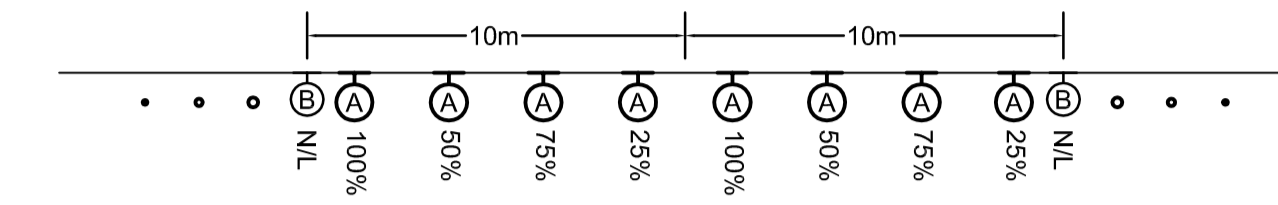
NOTE: REFER TO WRITTEN SPECIFICATIONS FOR FURTHER DETAILS.

**SPECIFIC ELECTRICAL NOTES**

- 1 PROVIDE TYPE 'A' LUMINAIRES ALONG TUNNEL WALL AS INDICATED IN ENLARGED TYPICAL WALL PLAN SEGMENT VIEWS DETAIL THIS DRAWING.
- 2 WIRE EXTERIOR FIXTURES TO A SEPARATE 20A-1P CIRCUIT. FIXTURES TO BE CONTROLLED TO OPERATE FROM DUSK UNTIL DAWN.
- 3 PROVIDE ADDITIONAL TYPE 'A' FIXTURES ON APPROACH SIDE. PROVIDE 3 EXTRA FIXTURES IN SEGMENT 17. WIRE TO 50%, 75% AND 100% LIGHTING LEVEL CIRCUITS. PROVIDE 2 EXTRA FIXTURES IN SEGMENT 1. WIRE TO 50% AND 100% LIGHTING LEVEL CIRCUITS.

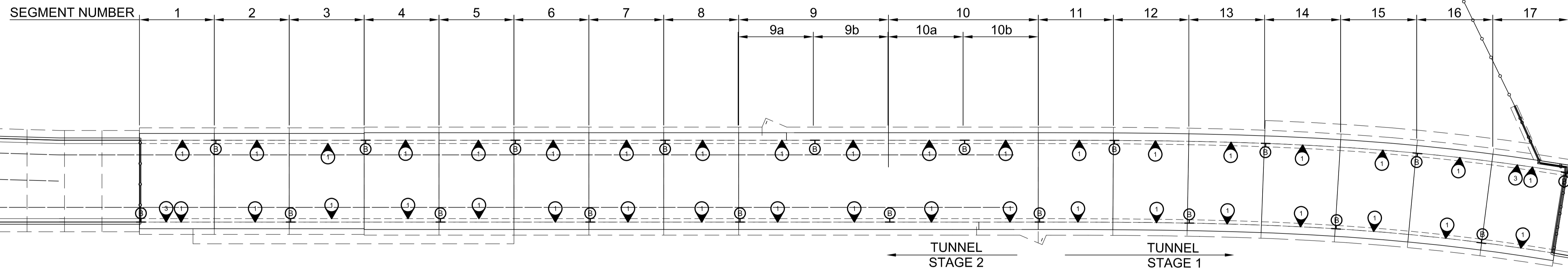


**ENLARGED TYPICAL WALL PLAN (2 SEGMENTS 9b TO 17)**  
SCALE 1:100



**ENLARGED TYPICAL WALL PLAN (2 SEGMENTS 1 TO 9a)**  
SCALE 1:100

LIGHTING CIRCUIT NUMBERS BY CONTROL TYPE AND SEGMENT #																			
TYPE	SEGMENT # ( WEST SIDE)																		
	1	2	3	4	5	6	7	8	9a	9b	10a	10b	11	12	13	14	15	16	17
N/L	101	-	101	-	101	-	101	-	101	-	101	-	101	-	101	-	101	-	101
25%	102	102	102	102	102	102	102	102	106	106	106	106	106	106	110	110	110	110	110
50%	103	103	103	103	103	103	103	103	107	107	107	107	107	107	111	111	111	111	111
75%	104	104	104	104	104	104	104	104	108	108	108	108	108	108	112	112	112	112	112
100%	105	105	105	105	105	105	105	105	109	109	109	109	109	109	113	113	113	113	113
TYPE	SEGMENT # ( EAST SIDE)																		
	1	2	3	4	5	6	7	8	9a	9b	10a	10b	11	12	13	14	15	16	17
N/L	117	-	117	-	117	-	117	-	117	-	117	-	117	-	117	-	117	-	117
25%	118	118	118	118	118	118	118	118	122	122	122	122	122	122	126	126	126	126	126
50%	119	119	119	119	119	119	119	119	123	123	123	123	123	123	127	127	127	127	127
75%	120	120	120	120	120	120	120	120	124	124	124	124	124	124	128	128	128	128	128
100%	121	121	121	121	121	121	121	121	125	125	125	125	125	125	129	129	129	129	129



**ELECTRICAL LAYOUT**  
SCALE 1:300

**GENERAL ELECTRICAL NOTES**

1. CAUTION: LONG RUNS. SELECT WIRE SIZE TO LIMIT VOLTAGE DROP TO NO MORE THAN 3% FOR ALL BRANCH CIRCUITS IN ACCORDANCE WITH THE WINNIPEG ELECTRICAL BY-LAWS. PROVIDE WALL MOUNTED W.P. JUNCTION BOXES AS REQUIRED TO ACCOMMODATE.
2. THE COMPLETE ELECTRICAL INSTALLATION IN THE TUNNEL AND ASSOCIATED APPROACHES IS TO CONFORM TO IP66 FOR DUST-TIGHT AND WATER JET PROOF CONSTRUCTION.

APPROXIMATE LOCATION OF PANEL '100' WITHIN PUMP HOUSE. FED FROM PUMP HOUSE CDP. COORDINATE EXACT LOCATION WITH PUMPHOUSE ELECTRICAL CONSULTANT.

<p>LOCATION UNDERGROUND APPROVED STRUCTURES</p> <p>SUPV. U/G STRUCTURES COMMITTEE DATE</p> <p>NOTE: LOCATION OF UNDERGROUND STRUCTURES AS SHOWN ARE BASED ON THE BEST INFORMATION AVAILABLE. BUT NO GUARANTEE IS GIVEN THAT ALL EXISTING UTILITIES ARE SHOWN OR THAT THE GIVEN LOCATIONS ARE EXACT. CONFIRMATION OF EXISTENCE AND EXACT LOCATION OF ALL SERVICES MUST BE OBTAINED FROM THE INDIVIDUAL UTILITIES BEFORE PROCEEDING WITH CONSTRUCTION.</p>	<p>B.M. ELEV.</p> <table border="1"> <tr><td>1</td><td>REVISED FOR ADDENDUM #4</td><td>11.04.2009</td><td>DZ</td></tr> <tr><td>0</td><td>ISSUED FOR TENDER</td><td>10.06.2009</td><td>DZ</td></tr> <tr><td>NO.</td><td>REVISIONS</td><td>DATE</td><td>BY</td></tr> </table>	1	REVISED FOR ADDENDUM #4	11.04.2009	DZ	0	ISSUED FOR TENDER	10.06.2009	DZ	NO.	REVISIONS	DATE	BY	<p>DESIGNED BY DZ</p> <p>DRAWN BY DF</p> <p>CHECKED BY DZ</p> <p>APPROVED BY VJT</p> <p>HOR. SCALE AS NOTED</p> <p>VERTICAL AS NOTED</p> <p>DATE 10.06.2009</p>	<p><b>NOVA 3</b></p> <p>NOVA 3 ENGINEERING LTD. CONSULTING ENGINEERS</p> <p>JN: 29-111 TEL: (204) 943-6142 FAX: (204) 942-1276 201-120 FORT STREET WINNIPEG, MANITOBA</p> <p>RELEASED FOR CONSTRUCTION</p> <p>DATE</p>	<p>ENGINEER'S SEAL</p> <p>PROVINCE OF MANITOBA REGISTERED ENGINEER V. J. THIELMANN 2009.10.06</p> <p>CONSULTANT PROJECT NO. 088813</p>	<p><b>THE CITY OF WINNIPEG</b> TRANSIT DEPARTMENT</p> <p>SOUTHWEST RAPID TRANSIT CORRIDOR - STAGE 1 TRANSITWAY TUNNEL AT CN RIVERS SUBDIVISION MILEAGE 1.38 &amp; ASSOCIATED WORKS</p> <p>ELECTRICAL LAYOUT</p>	<p>CITY DRAWING NUMBER U237-09-56</p> <p>SHEET 56 OF 73</p> <p>CONSULTANT DRAWING NUMBER C4-S1200-T</p>
1	REVISED FOR ADDENDUM #4	11.04.2009	DZ															
0	ISSUED FOR TENDER	10.06.2009	DZ															
NO.	REVISIONS	DATE	BY															

**APEGM**  
Certificate of Authorization  
Nova 3 Engineering Ltd.  
No. 962 Date: 2009.10.06  
REFER TO WWW.NOVA3.CA FOR CAUTIONARY NOTES.

\\terabyte\jobs\291111\1\1\dwg\05 - Addendum\_4\29111E1.dwg