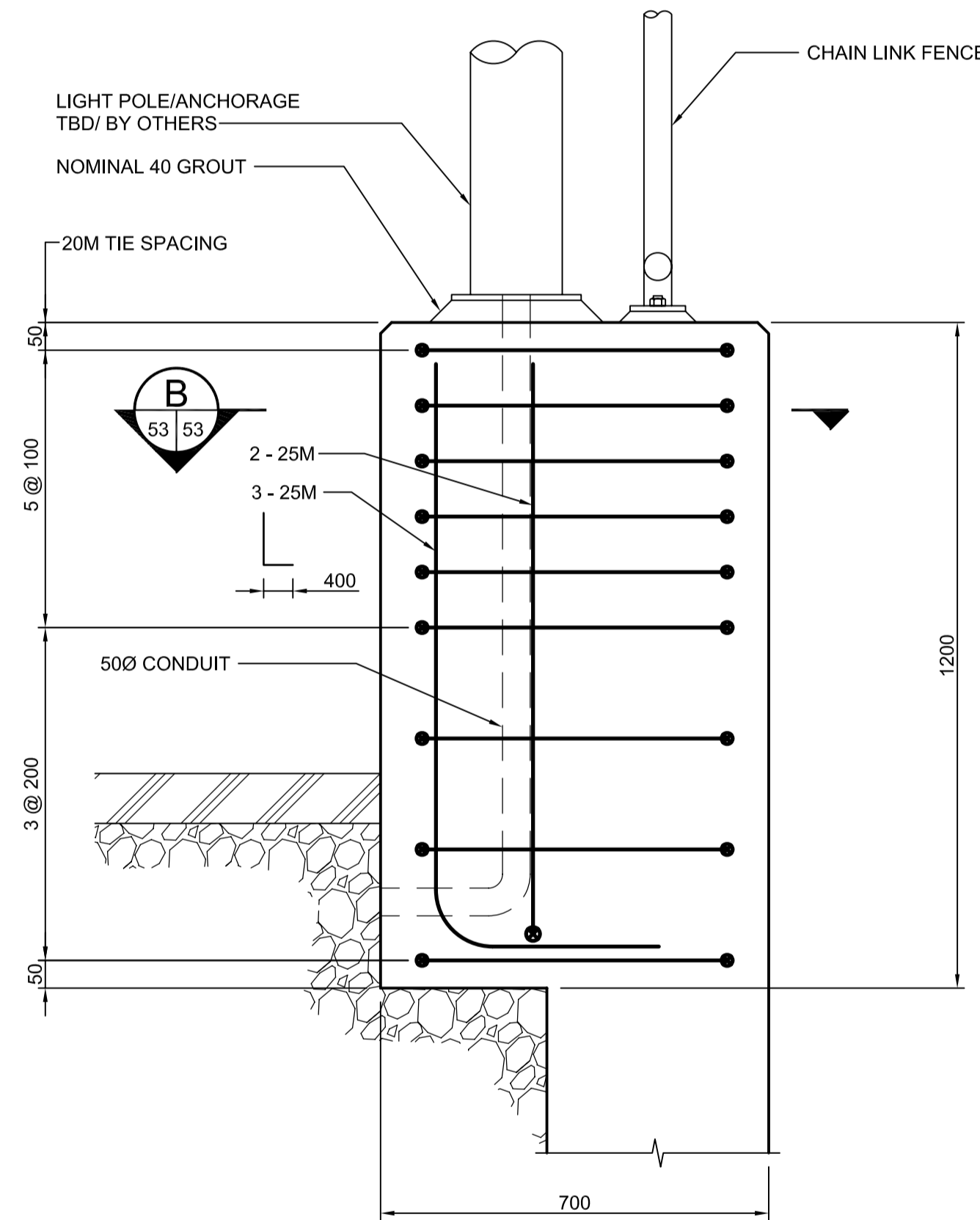
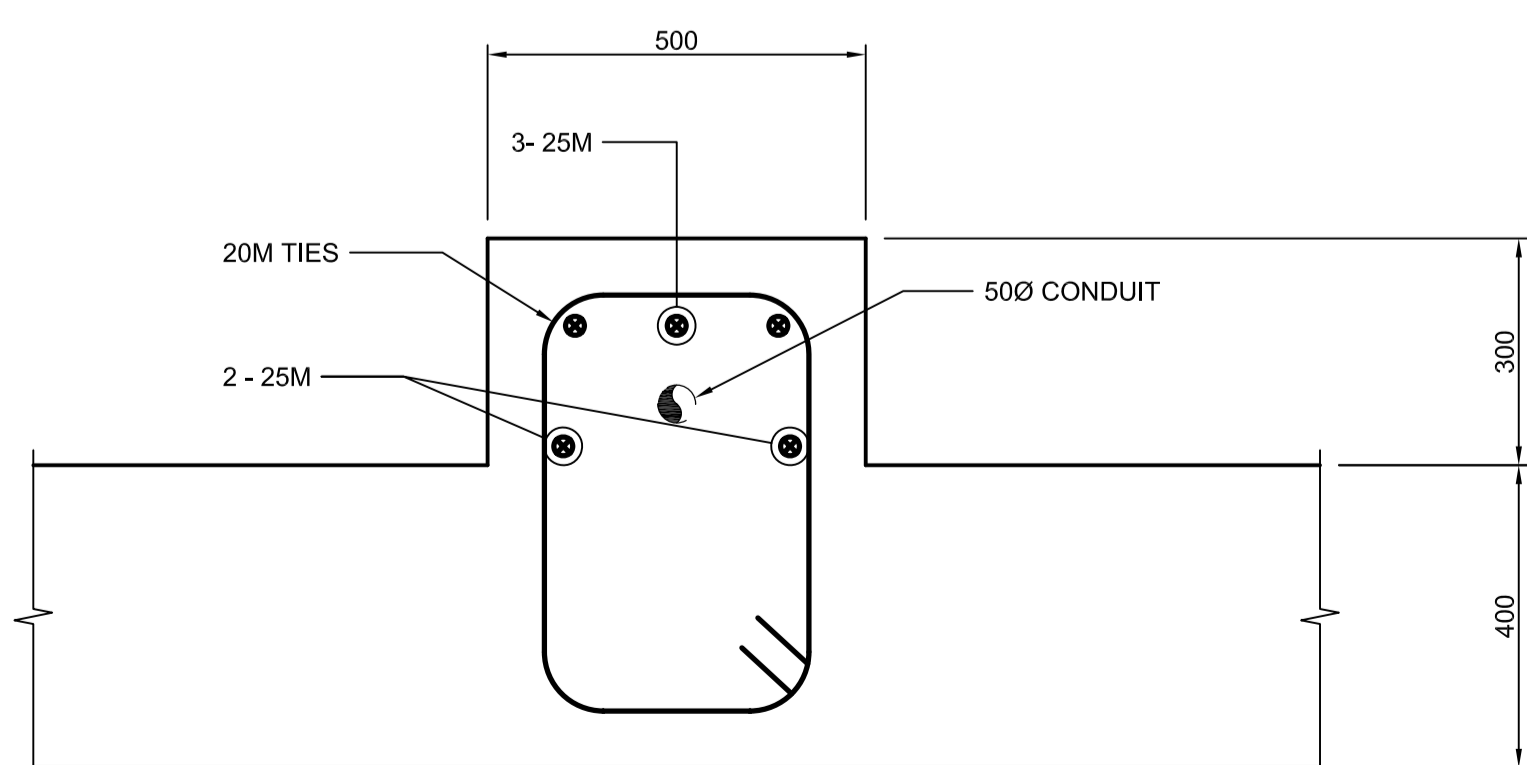


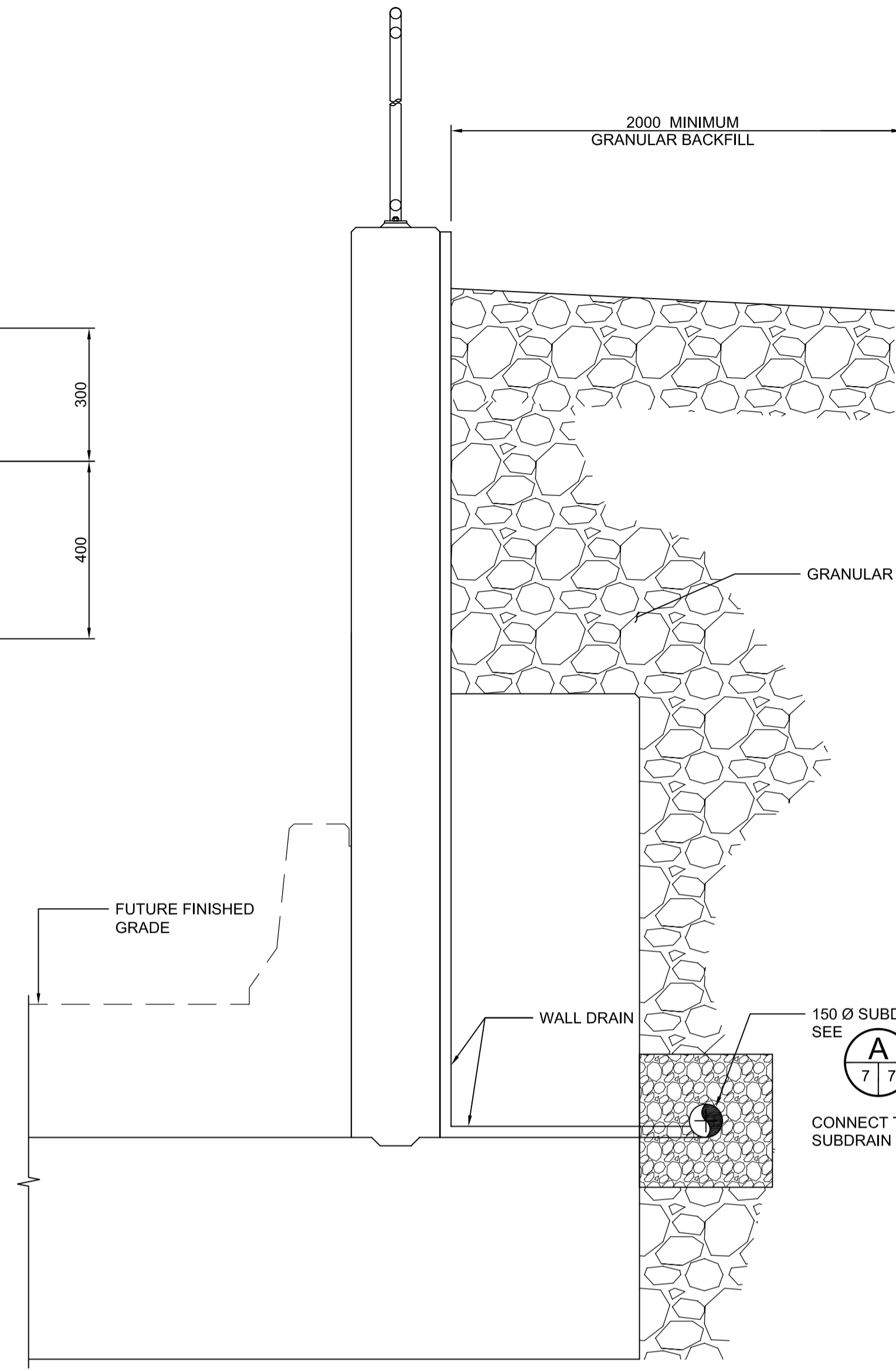
**NORTHWEST WALL LIGHT POLE WIDENING**  
SCALE 1:10



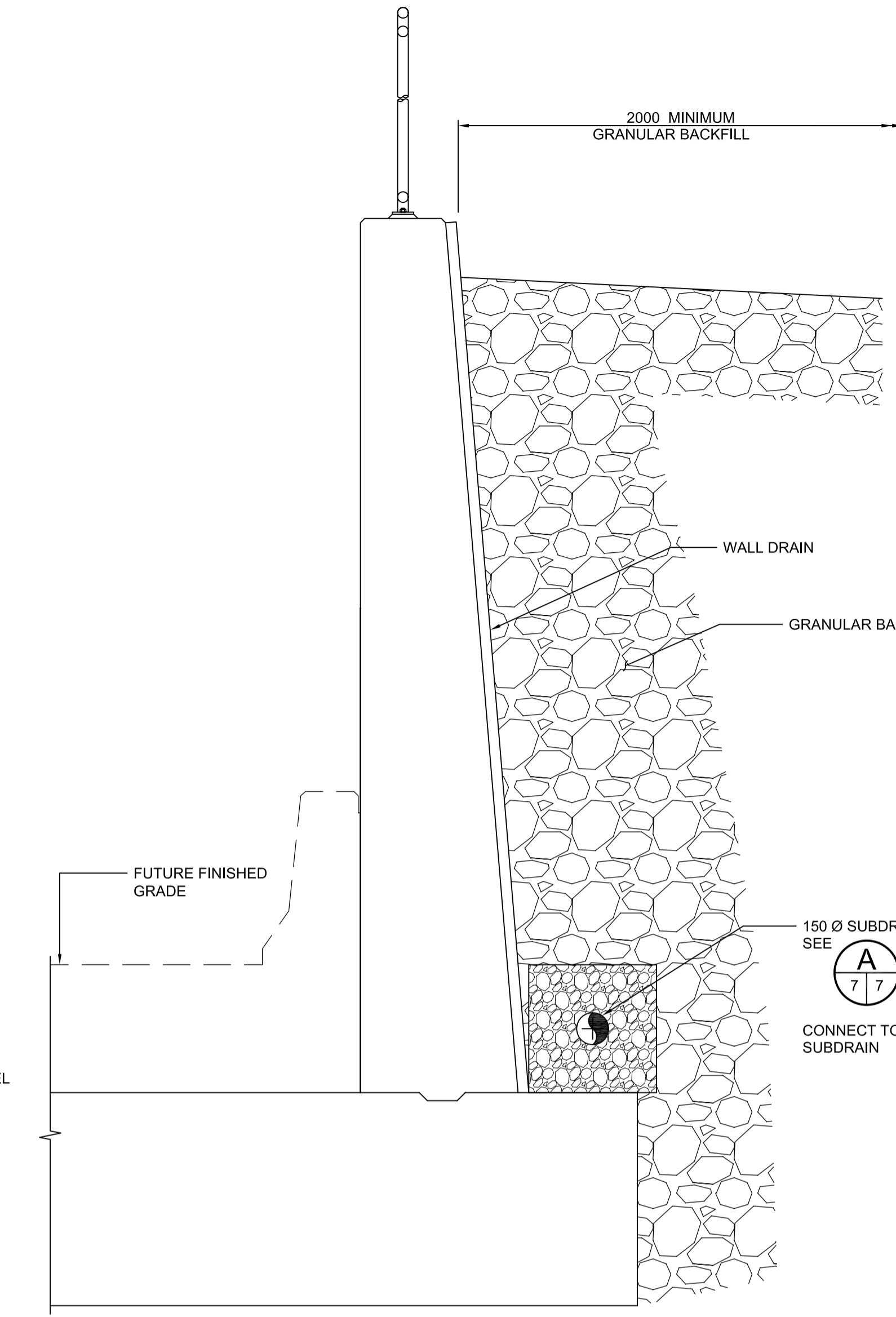
**SECTION A-A**  
SCALE 1:10



**SECTION B-B**  
SCALE 1:10

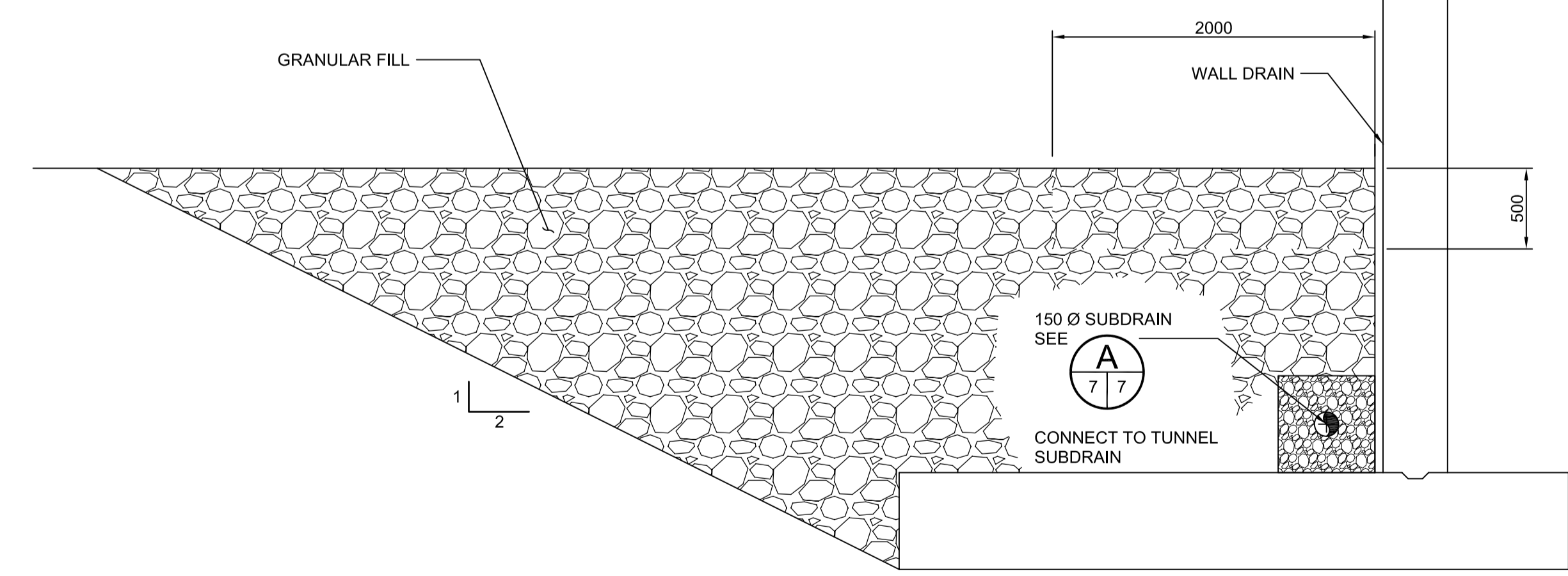


**COUNTERFORT WALL OPTION**

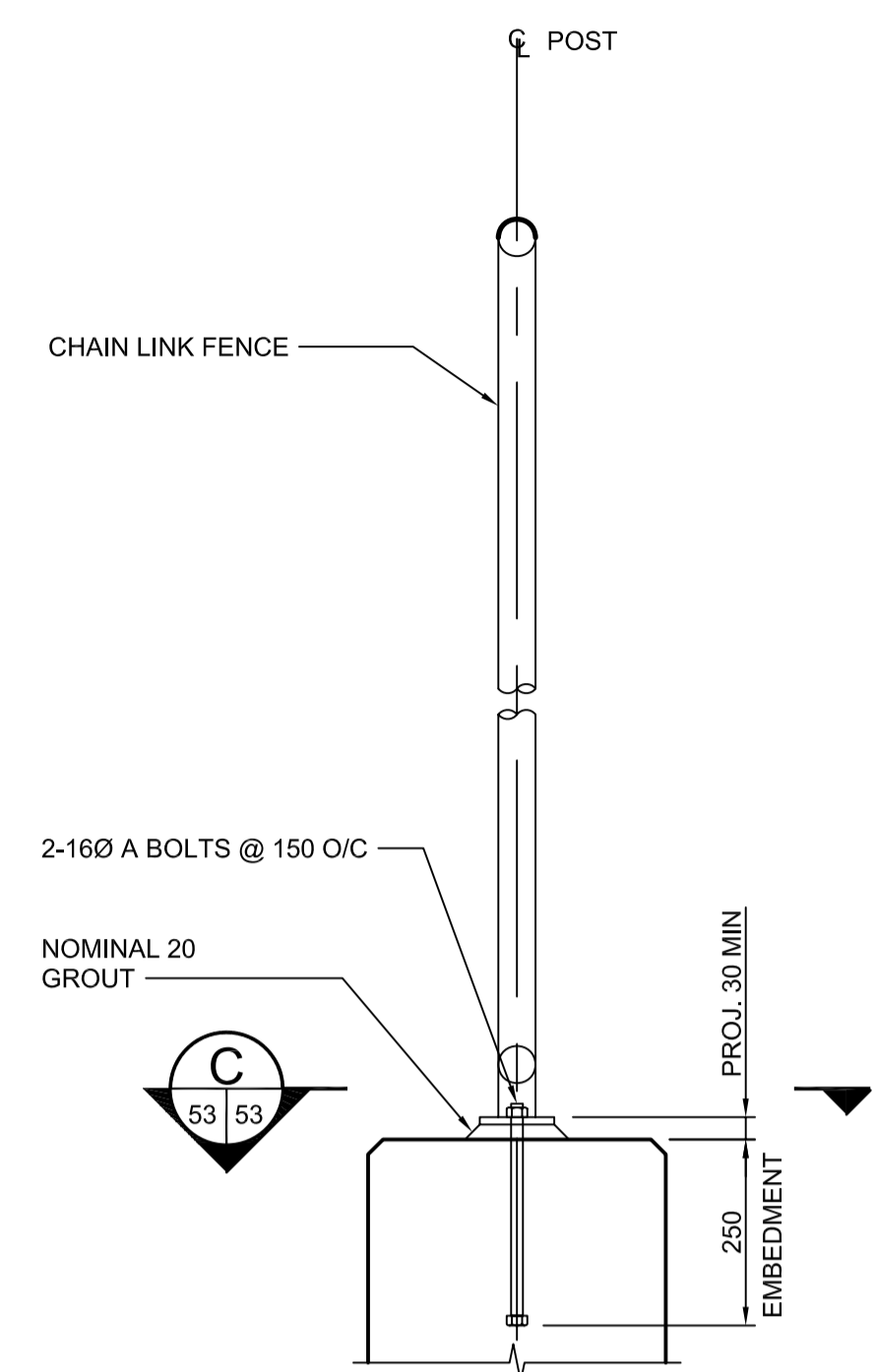


**TAPERED WALL OPTION**

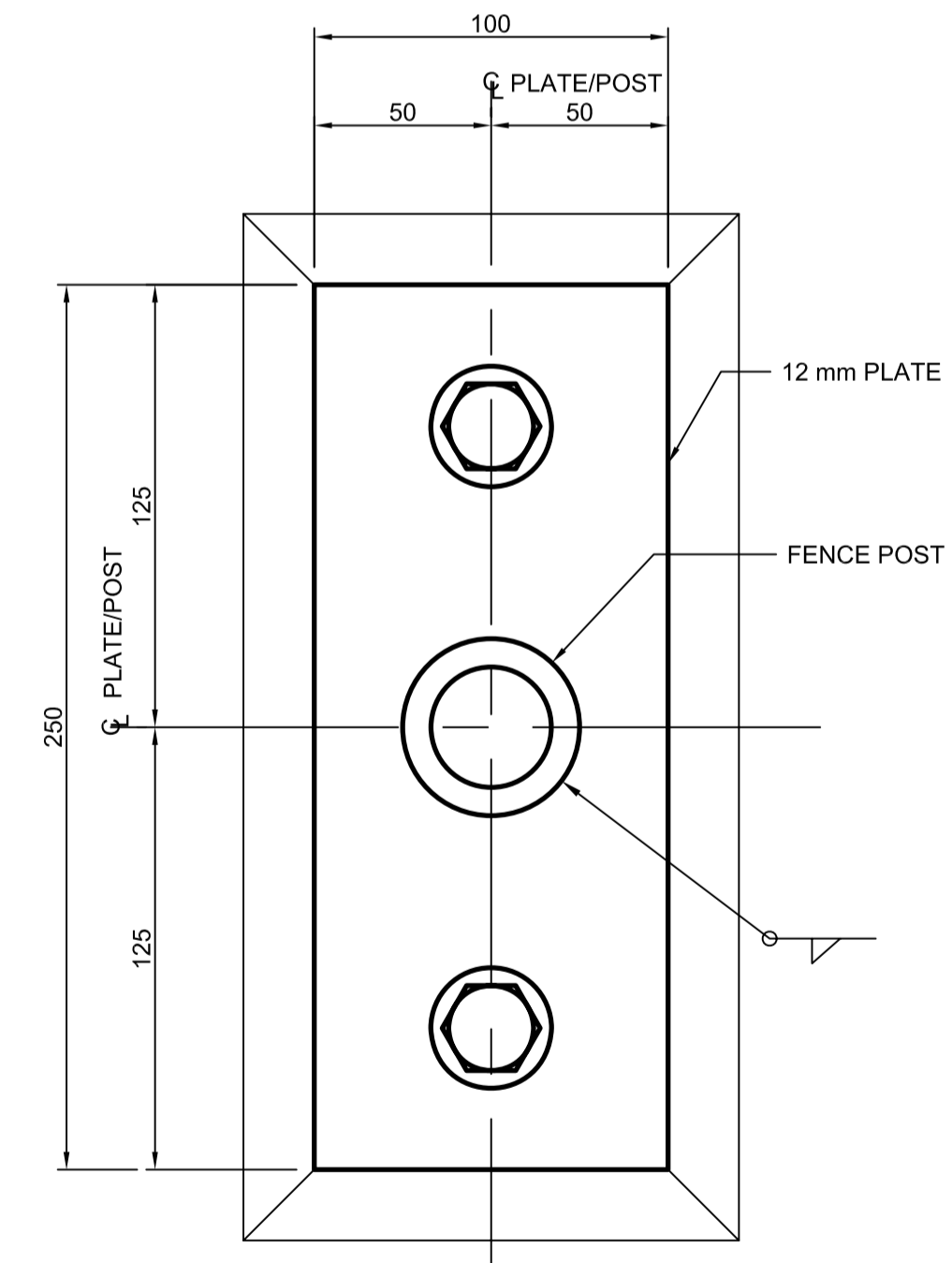
**RETAINING WALL DRAINAGE**  
SCALE 1:20



**GRAVITY WALL DRAINAGE**  
SCALE 1:30



**FENCING DETAIL**  
SCALE 1:10



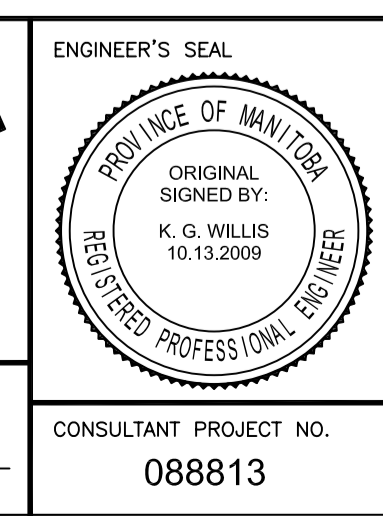
**SECTION C-C**  
SCALE 1:2



LOCATION UNDERGROUND	APPROVED STRUCTURES	B.M. ELEV.	DESIGNED BY	KGW
SUPV. U/G STRUCTURES COMMITTEE	DATE		DRAWN BY	RCB
			CHECKED BY	KGW
			APPROVED BY	DPK
			HOR. SCALE	AS SHOWN
			VERTICAL SCALE	AS SHOWN
			DATE	2009/06/24
			DATE	

NO.	REVISIONS	DATE	BY
1	ISSUED WITH ADDENDUM #4	11/04/2009	RCB
0	ISSUED FOR TENDER	10/13/2009	RCB

ENGINEER'S SEAL	PROVINCE OF MANITOBA REGISTERED PROFESSIONAL ENGINEER
ORIGINAL SIGNED BY:	K. G. WILLIS 10-13-2009
CONSULTANT PROJECT NO.	088813



**THE CITY OF WINNIPEG TRANSIT DEPARTMENT**

SOUTHWEST RAPID TRANSIT CORRIDOR - STAGE 1  
TRANSITWAY TUNNEL AT CN RIVERS SUBDIVISION  
MILEAGE 1.38 & ASSOCIATED WORKS

CITY DRAWING NUMBER: U237-09-53  
SHEET 53 OF 73  
CONSULTANT DRAWING NUMBER: C4-S1130-T

MISCELLANEOUS WALL DETAILS

G:\csm\088813\Contract\Contract\_1\Current\C4-S1130-P.dwg