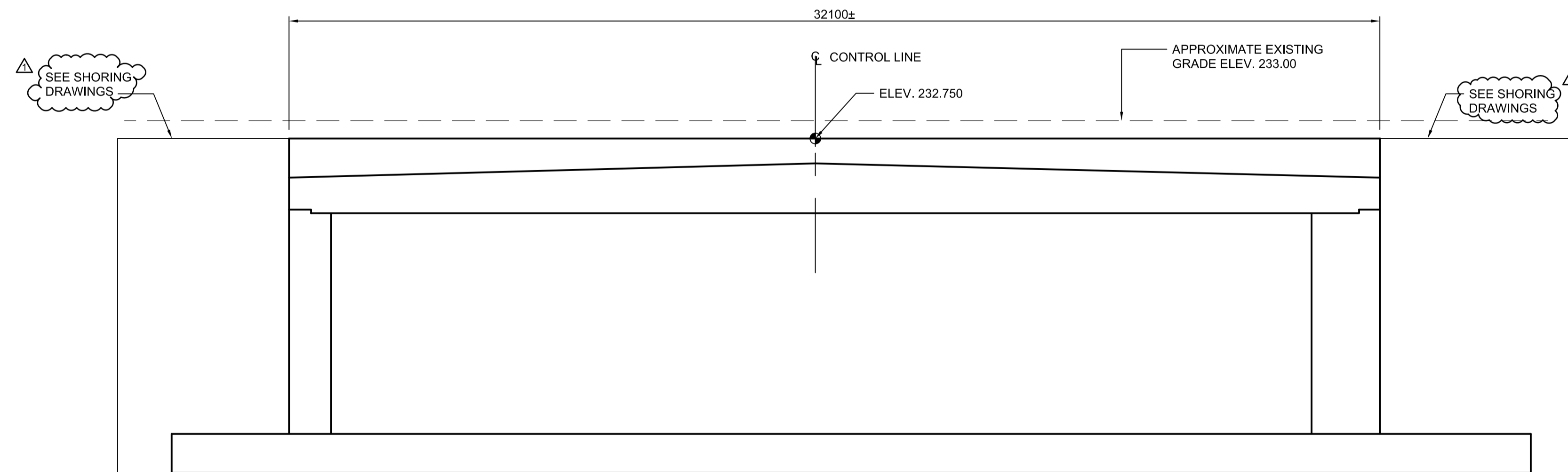


PLAN
SCALE 1:100

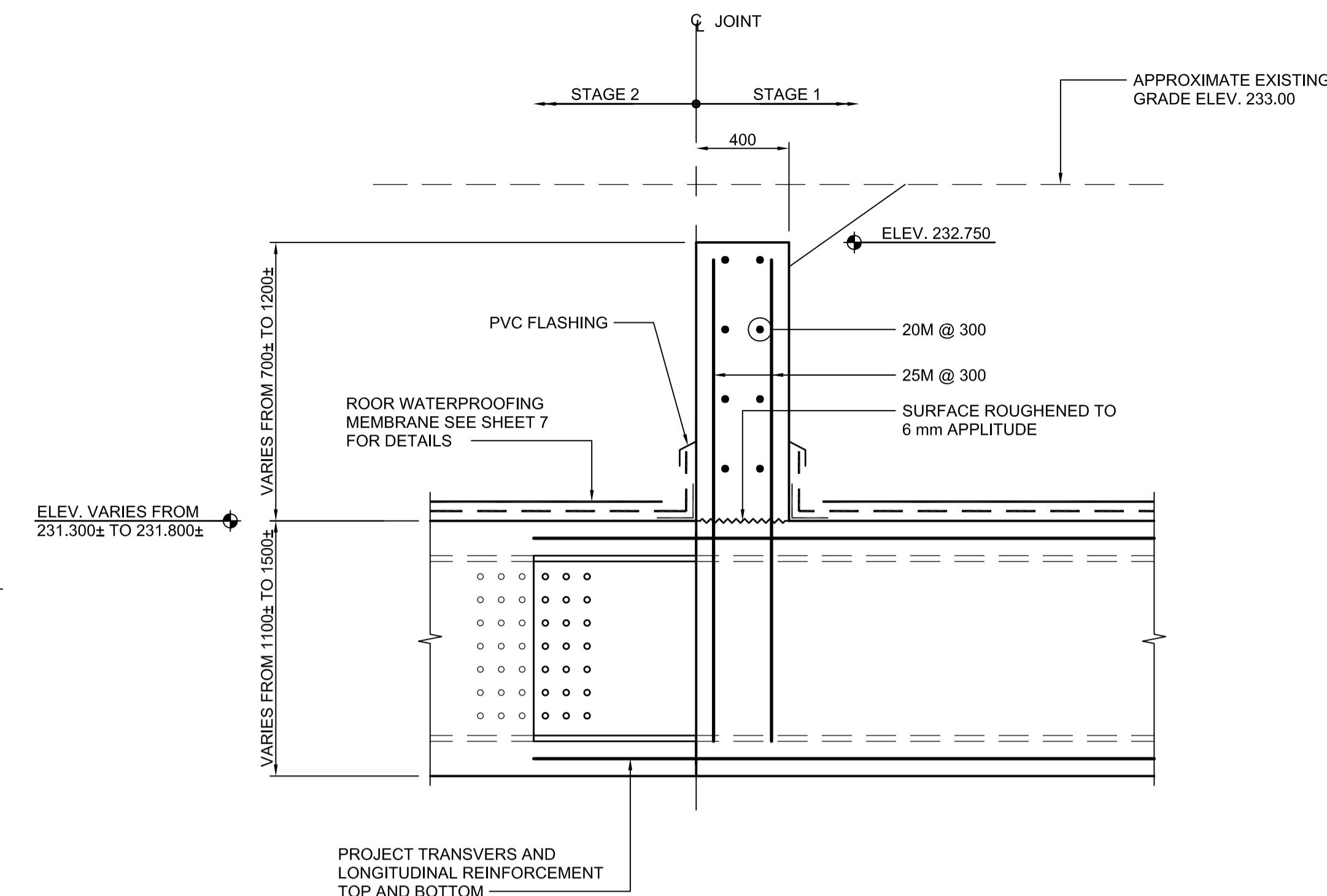
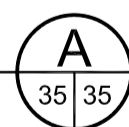
EDGE OF STAGE 1 FOUNDATION BELOW
EDGE OF STAGE 1 ROOF SLAB

NOTE:

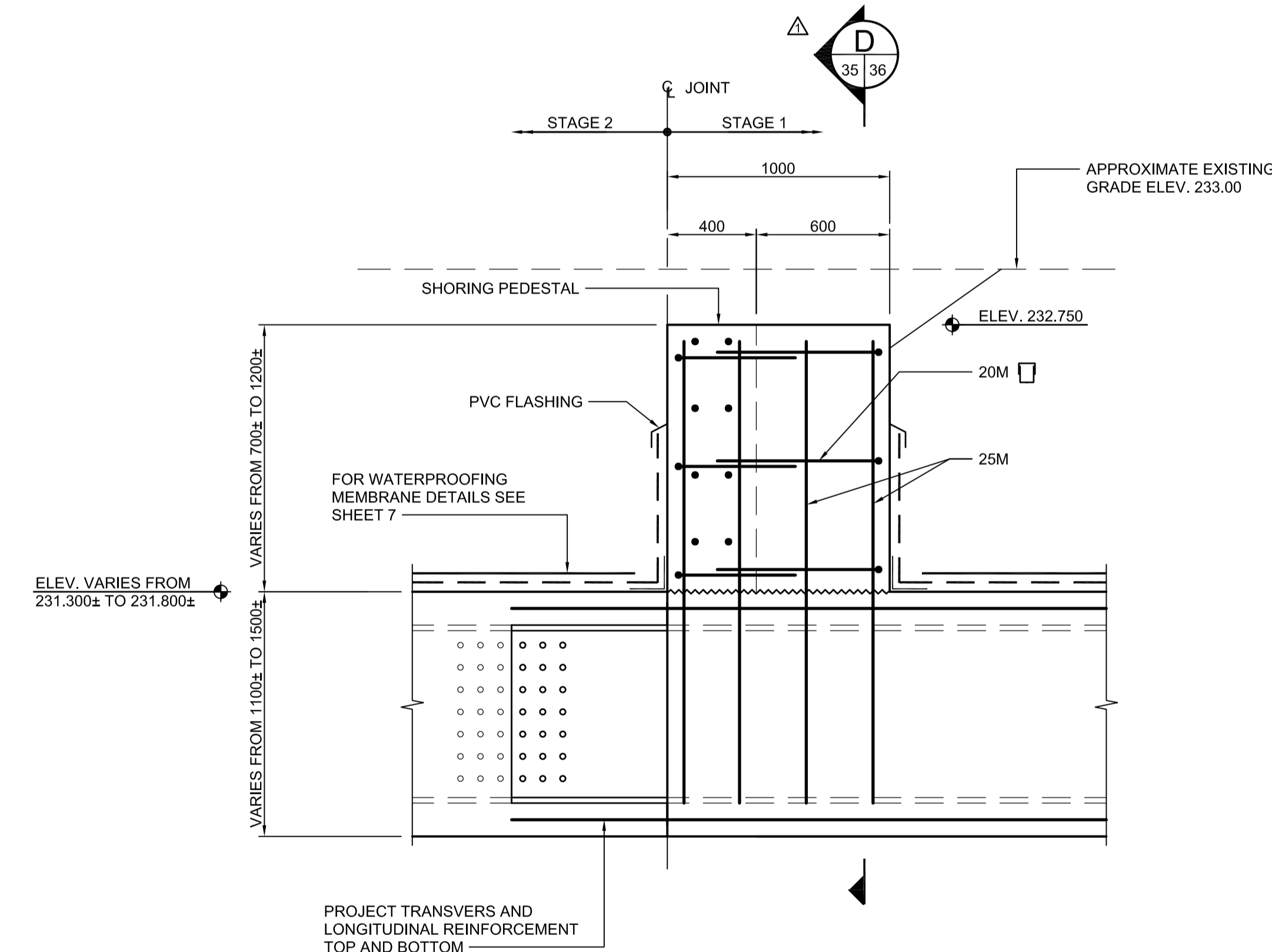
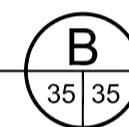
- 6 PEDESTALS REQUIRED, LOCATION TO BE COORDINATED WITH SHORING SPECIFICATIONS.



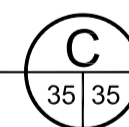
SECTION SCHEMATIC
SCALE N.T.S.



SECTION
SCALE 1:20



SECTION
SCALE 1:20



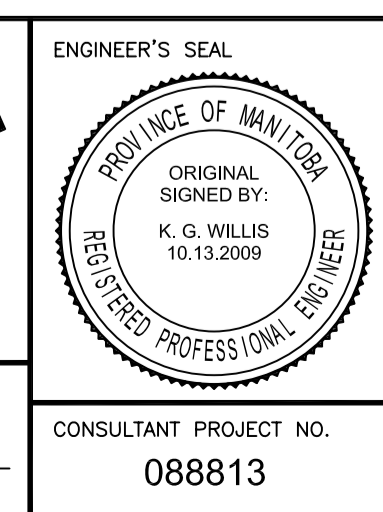
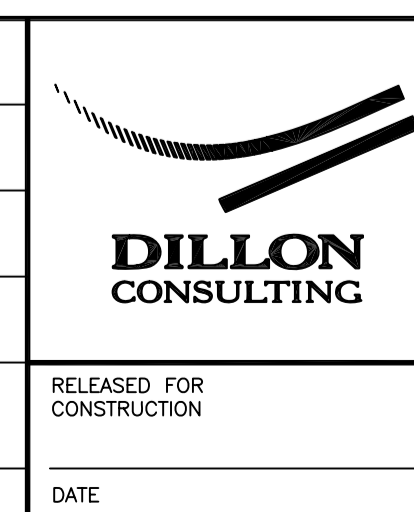
G:\csm\088813\Contract\Contract - 1\Current\C4-S1112-P.dwg



LOCATION UNDERGROUND	APPROVED STRUCTURES	B.M. ELEV.	DESIGNED BY
			KGW
			DRAWN BY
			RCB
			CHECKED BY
			KGW
			APPROVED BY
			DPK
			HOR. SCALE AS SHOWN
			VERTICAL AS SHOWN
			DATE 2009/06/24

NO.	REVISIONS	DATE	BY
1	ISSUED WITH ADDENDUM #4	11/04/2009	RCB
0	ISSUED FOR TENDER	10/13/2009	RCB

RELEASED FOR CONSTRUCTION	DATE



THE CITY OF WINNIPEG
TRANSIT DEPARTMENT

Winnipeg

SOUTHWEST RAPID TRANSIT CORRIDOR - STAGE 1
TRANSITWAY TUNNEL AT CN RIVERS SUBDIVISION
MILEAGE 1.38 & ASSOCIATED WORKS

CITY DRAWING NUMBER: U237-09-35
SHEET 35 OF 73
CONSULTANT DRAWING NUMBER: C4-S1112-T

CONSULTANT PROJECT NO. 088813

HEADWALL DETAILS SHEET 1 OF 2

NOTE:
LOCATION OF UNDERGROUND STRUCTURES AS SHOWN ARE BASED ON THE BEST INFORMATION AVAILABLE BUT NO GUARANTEE IS GIVEN THAT ALL EXISTING UTILITIES ARE SHOWN OR THAT THE GIVEN LOCATIONS ARE EXACT. CONFIRMATION OF EXISTENCE AND EXACT LOCATION OF ALL SERVICES MUST BE OBTAINED FROM THE INDIVIDUAL UTILITIES BEFORE PROCEEDING WITH CONSTRUCTION.