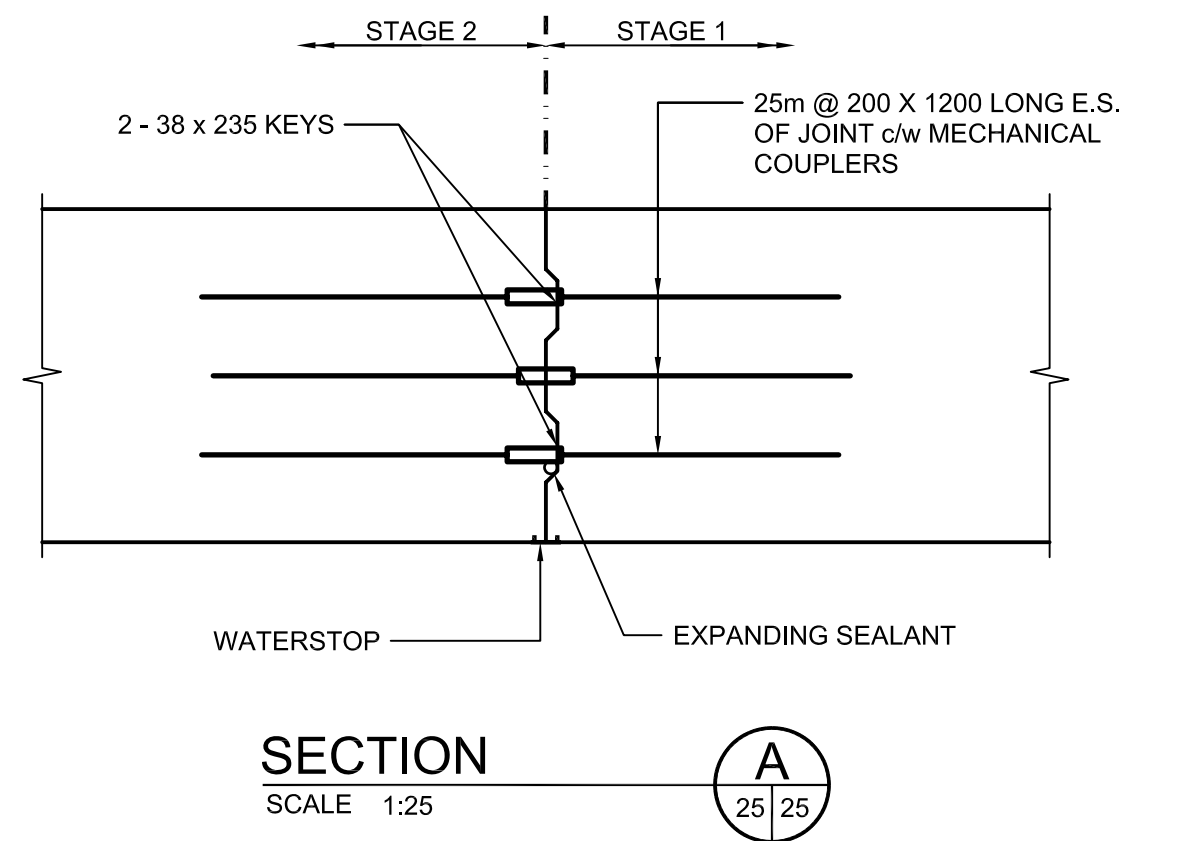
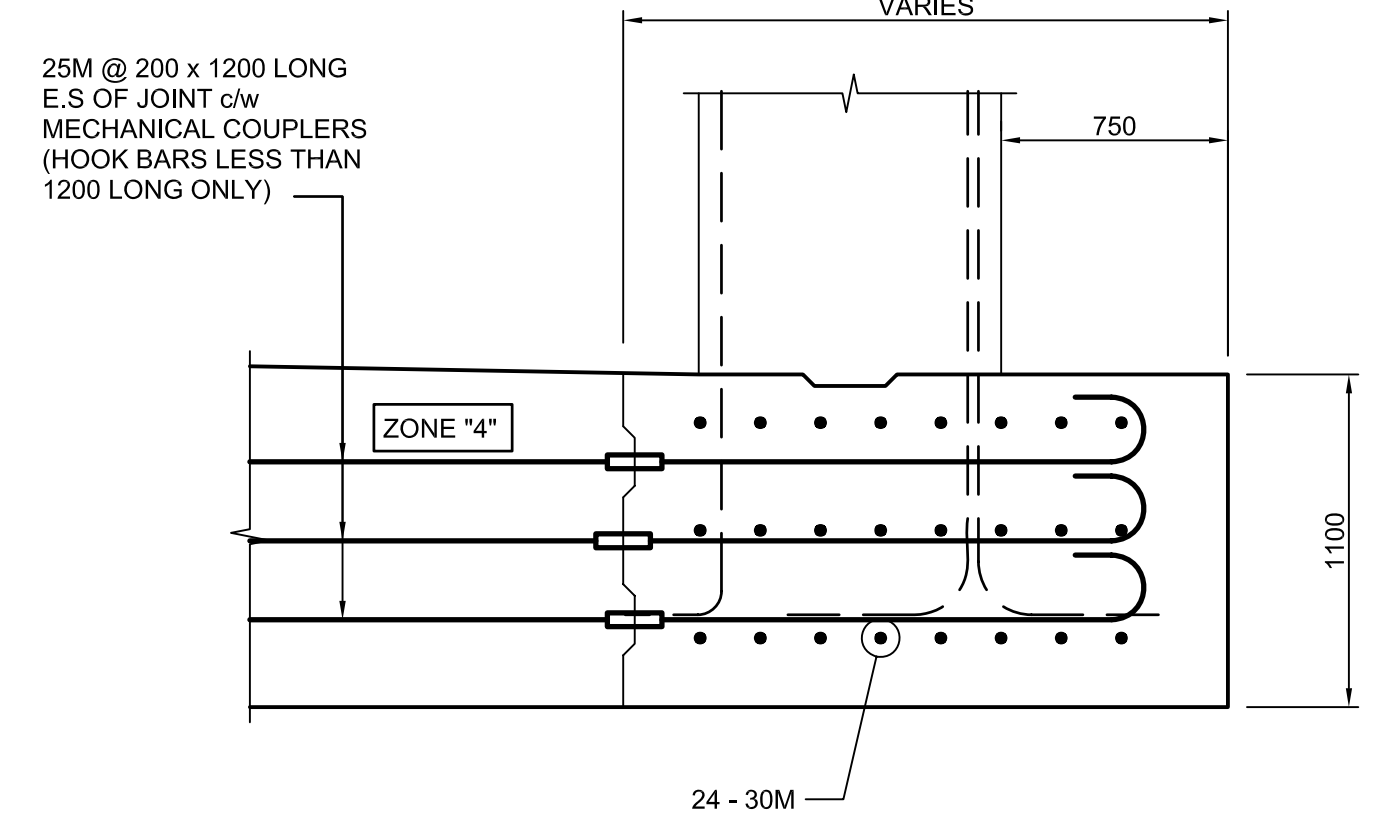


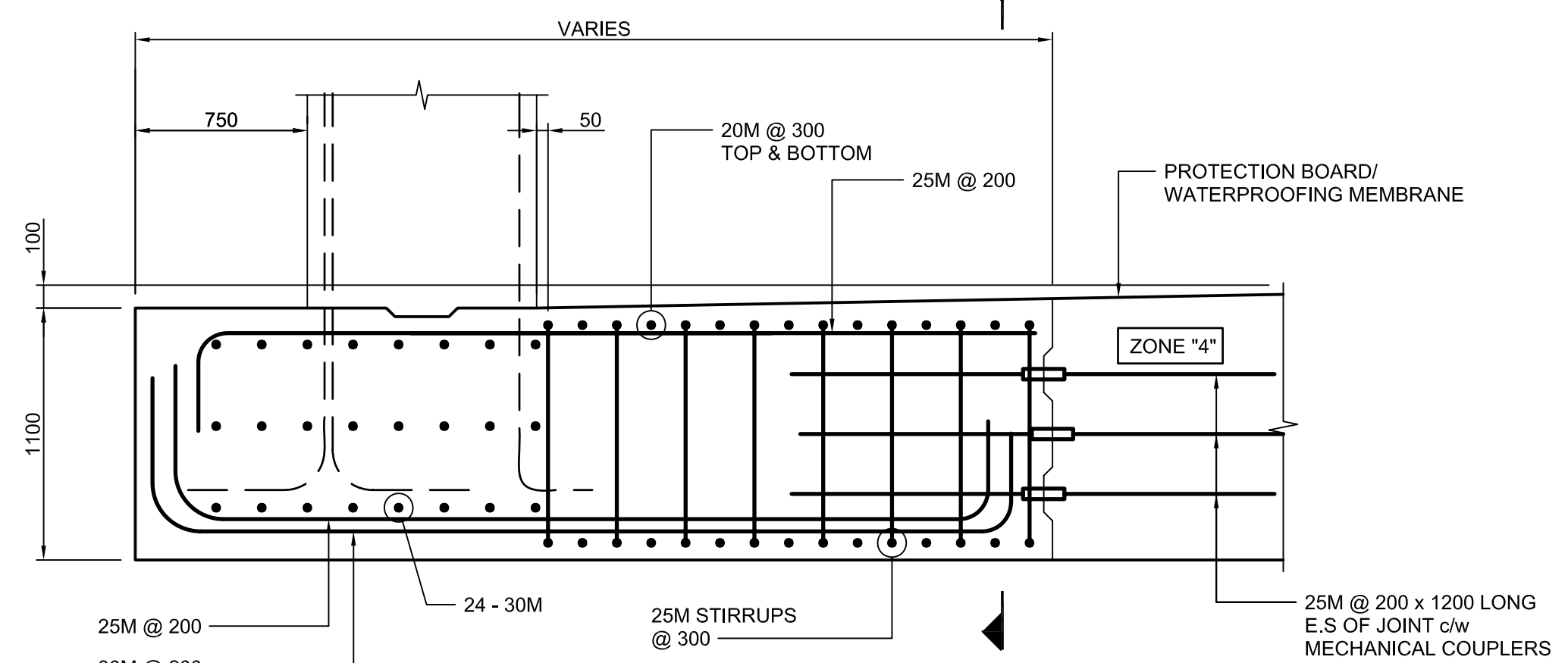
LAYOUT FOR TYPE E
SCALE 1:100



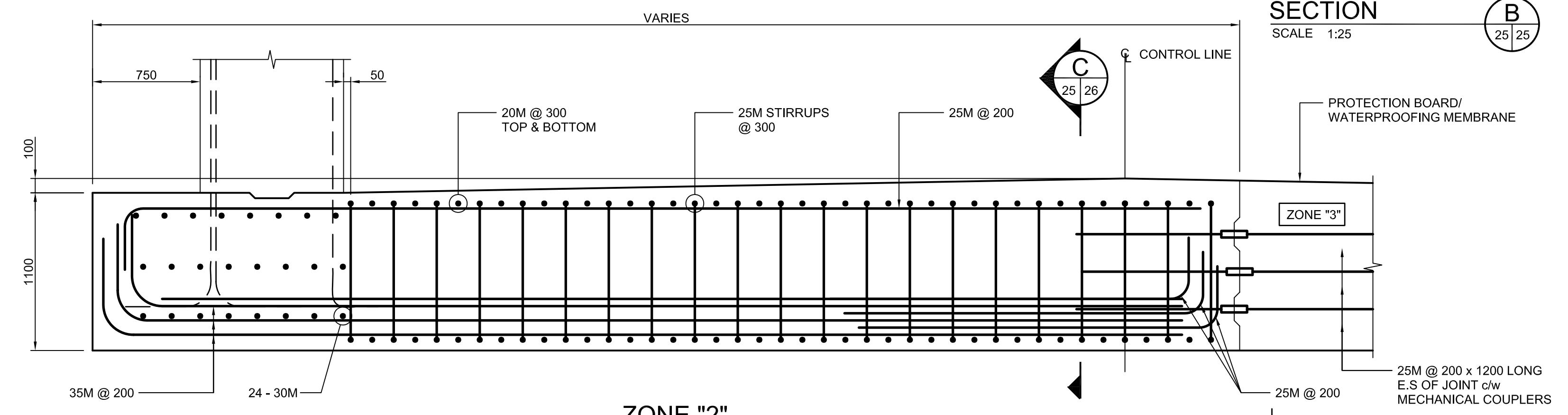
SECTION A
SCALE 1:25



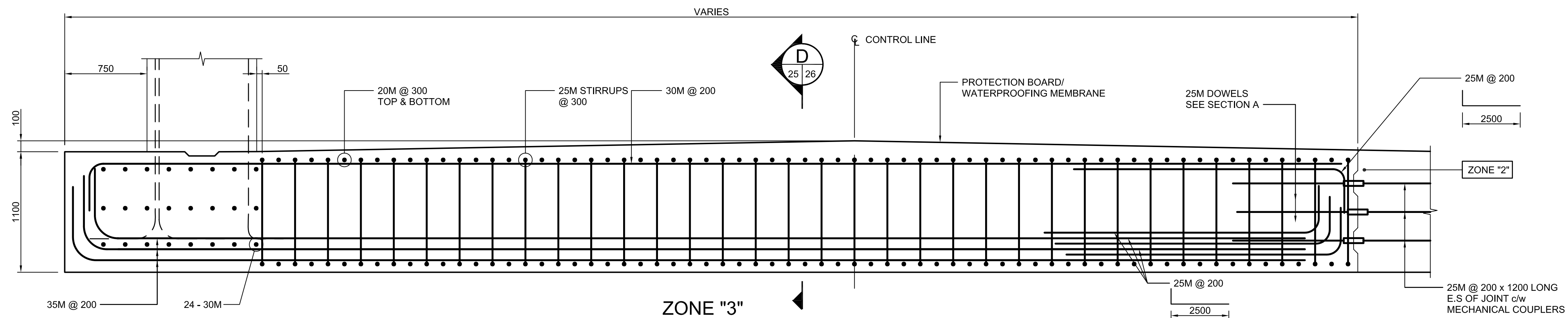
SECTION B
SCALE 1:25



ZONE "1"
SCALE 1:25



ZONE "2"
SCALE 1:25



ZONE "3"
SCALE 1:25

- NOTES:
1. STAGGERED MECHANICAL COUPLERS OR LAP SPLICES MAY BE ADDED TO FACILITATE BAR PLACEMENT AROUND SHORING. SUBMIT PROPOSED SPLICE AND COUPLER LAYOUT FOR REVIEW BEFORE DETAILING REINFORCEMENT.
 2. CONTRACTOR MAY ELECT TO REPLACE THE CLOSED STIRRUPS SHOWN WITH CONVENTIONAL OPEN STIRRUPS c/w 2-135 DEGREE HOOKS. HOOKS MAY BE PLACED AT TOP OR BOTTOM OF SLAB.
 3. FOR ZONE "4" REINFORCEMENT SEE SHEET 26.
 4. LOCATION AND POUR SEQUENCE TO SUITE SELECTED COUPLER TYPE.

APEGM
Certificate of Authorization
Dillon Consulting Limited (MB)
No. 1789 Date: OCTOBER 13, 2009

LOCATION UNDERGROUND APPROVED STRUCTURES SUPV. U/G STRUCTURES COMMITTEE DATE	B.M. ELEV.	DESIGNED BY KGW DRAWN BY RCB CHECKED BY KGW APPROVED BY DPK		ENGINEER'S SEAL PROVINCE OF MANITOBA ORIGINAL SIGNED BY: K. G. WILLIS 10-13-2009 REGISTERED PROFESSIONAL ENGINEER	THE CITY OF WINNIPEG TRANSIT DEPARTMENT	SOUTHWEST RAPID TRANSIT CORRIDOR - STAGE 1 TRANSITWAY TUNNEL AT CN RIVERS SUBDIVISION MILEAGE 1.38 & ASSOCIATED WORKS	CITY DRAWING NUMBER U237-09-25
NOTE: LOCATION OF UNDERGROUND STRUCTURES AS SHOWN ARE BASED ON THE BEST INFORMATION AVAILABLE BUT NO GUARANTEE IS GIVEN THAT ALL EXISTING UTILITIES ARE SHOWN OR THAT THE GIVEN LOCATIONS ARE EXACT. CONFIRMATION OF EXISTENCE AND EXACT LOCATION OF ALL SERVICES MUST BE OBTAINED FROM THE INDIVIDUAL UTILITIES BEFORE PROCEEDING WITH CONSTRUCTION.	1 ISSUED WITH ADDENDUM #4 11/04/2009 RCB 0 ISSUED FOR TENDER 10/13/2009 RCB NO. REVISIONS DATE BY	HOR. SCALE AS SHOWN VERTICAL AS SHOWN DATE 2009/06/24				RELEASED FOR CONSTRUCTION	CONSULTANT PROJECT NO. 088813

G:\cso\088813\Contract\Contract_1\Current\C4-S1102-F.dwg