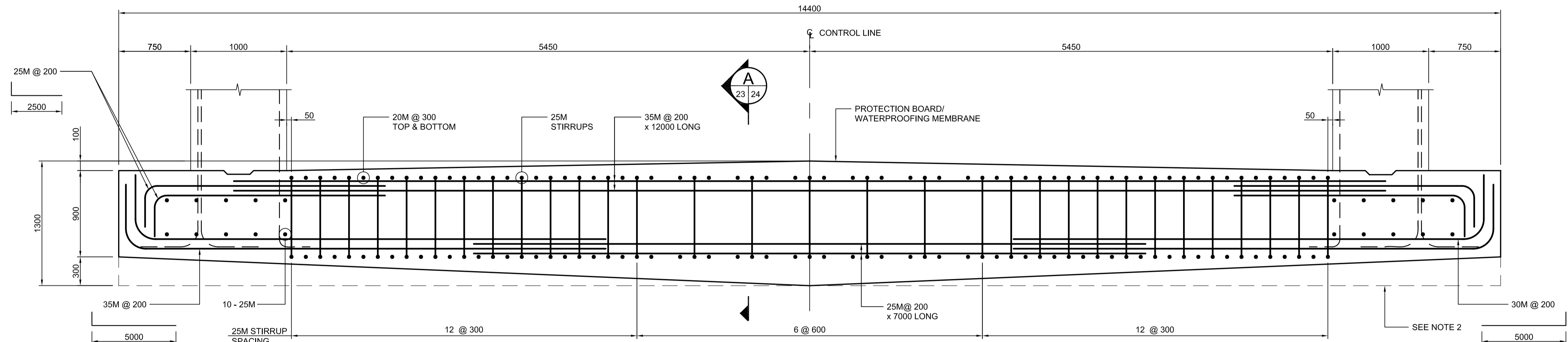
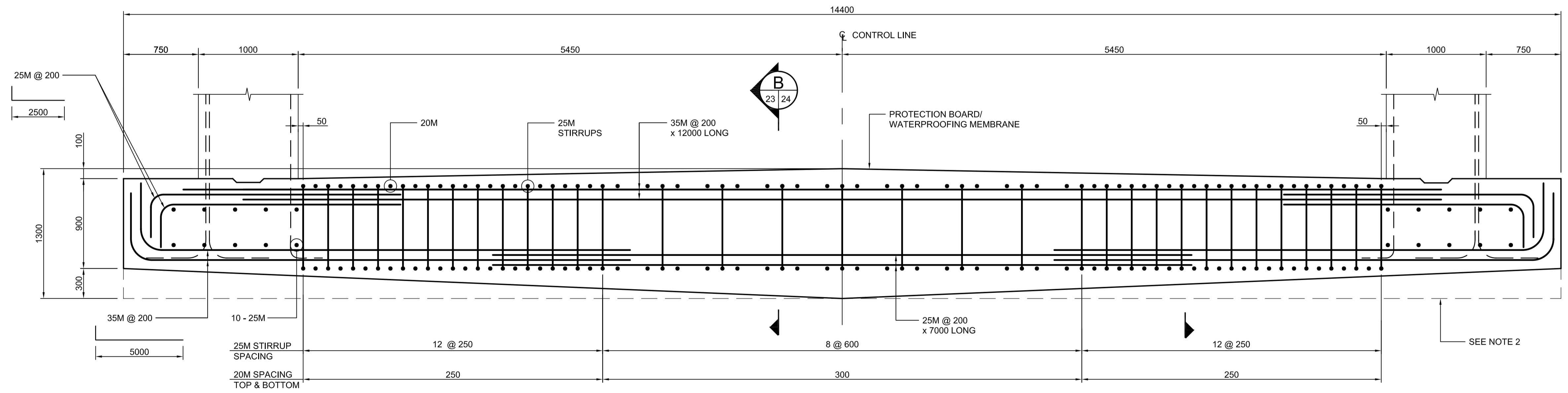


**FOUNDATION LAYOUT**  
SCALE 1:300



**SEGMENT TYPE A**  
SCALE 1:25



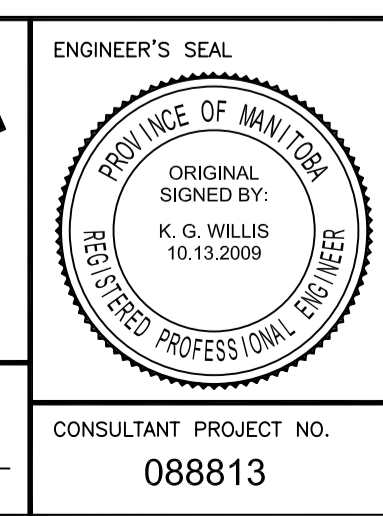
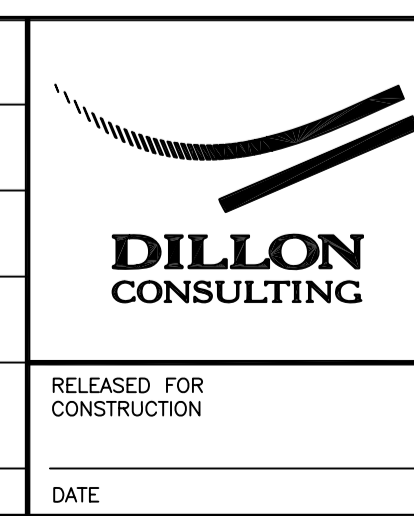
**SEGMENT TYPE B**  
SCALE 1:25

- NOTES:
1. STAGGERED MECHANICAL COUPLERS OR LAP SPLICES MAY BE ADDED TO FACILITATE BAR PLACEMENT AROUND SHORING. SUBMIT PROPOSED SPLICE AND COUPLER LAYOUT FOR REVIEW BEFORE DETAILING REINFORCEMENT.
  2. CONTRACTOR MAY ELECT TO PLACE UNDERSIDE OF SLAB LEVEL AS SHOWN. BOTTOM REINFORCEMENT LOCATION AND STIRRUP DEPTH SHALL BE ADJUSTED TO SUIT THE RESULTING MINIMUM SLAB THICKNESS.



LOCATION UNDERGROUND	APPROVED STRUCTURES	B.M. ELEV.
SUPY. U/G STRUCTURES COMMITTEE	DATE	
NOTE: LOCATION OF UNDERGROUND STRUCTURES AS SHOWN ARE BASED ON THE BEST INFORMATION AVAILABLE. BUT NO GUARANTEE IS GIVEN THAT ALL EXISTING UTILITIES ARE SHOWN OR THAT THE GIVEN LOCATIONS ARE EXACT. CONFIRMATION OF EXISTENCE AND EXACT LOCATION OF ALL SERVICES MUST BE OBTAINED FROM THE INDIVIDUAL UTILITIES BEFORE PROCEEDING WITH CONSTRUCTION.		
1	ISSUED WITH ADDENDUM #4	11/04/2009 RCB
0	ISSUED FOR TENDER	10/13/2009 RCB
NO.	REVISIONS	DATE BY

DESIGNED BY	KGW
DRAWN BY	RCB
CHECKED BY	KGW
APPROVED BY	DPK
HOR. SCALE	AS SHOWN
VERTICAL	AS SHOWN
DATE	2009/06/24



<b>THE CITY OF WINNIPEG</b> TRANSIT DEPARTMENT	
SOUTHWEST RAPID TRANSIT CORRIDOR - STAGE 1 TRANSITWAY TUNNEL AT CN RIVERS SUBDIVISION MILEAGE 1.38 & ASSOCIATED WORKS	
CITY DRAWING NUMBER	U237-09-23
SHEET	23 OF 73
CONSULTANT PROJECT NO.	088813
FOUNDATION PLAN AND DETAILS	
CONSULTANT DRAWING NUMBER	C4-S1100-T

G:\cadd\088813\Contract\Contract\_1\Current\C4-S1100-P.dwg