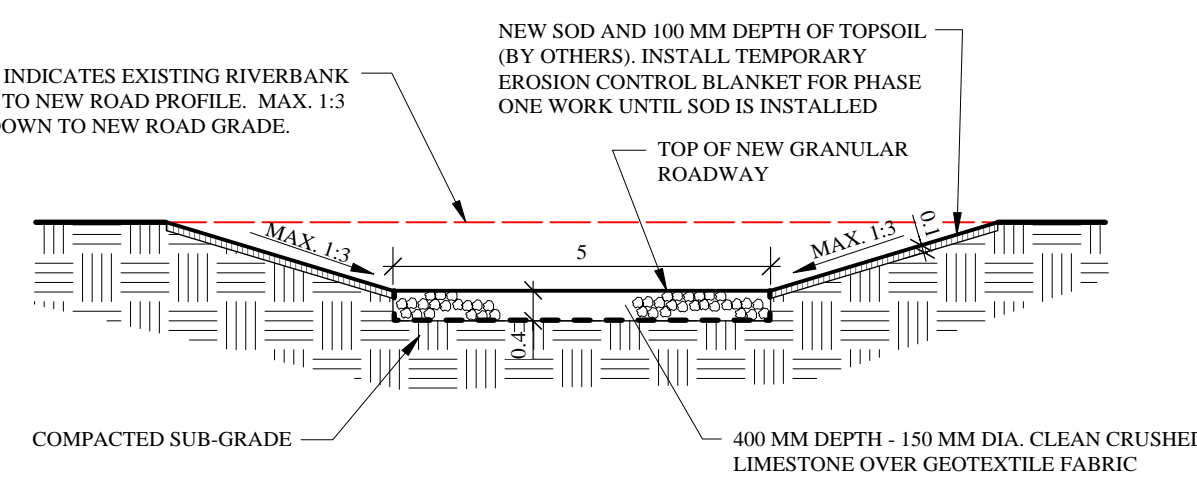
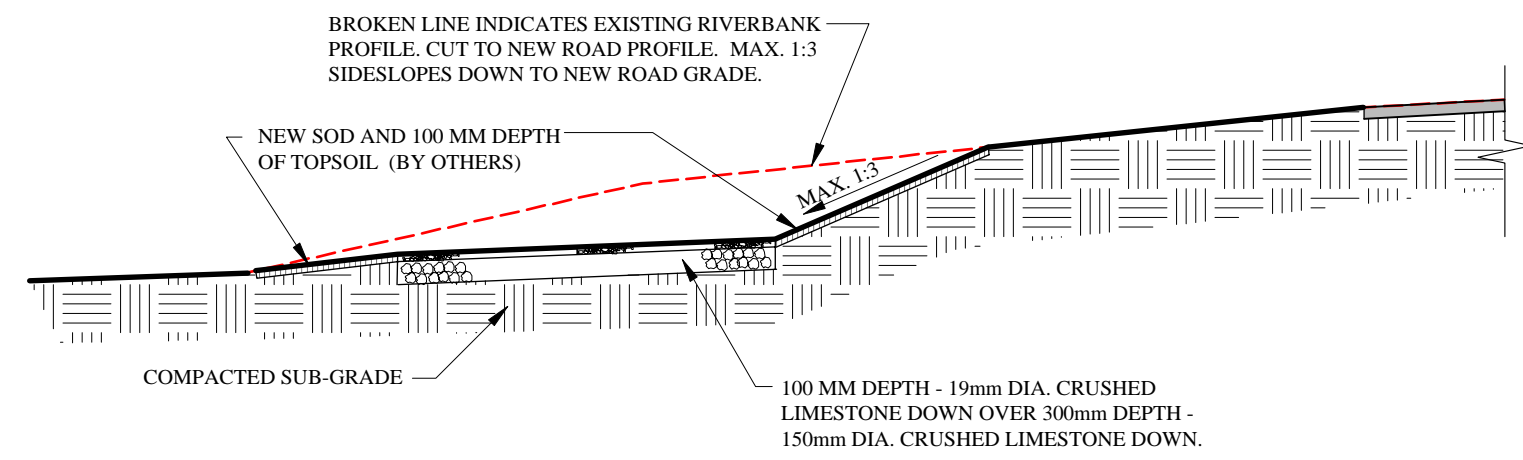


5 NEW ROADWAY/RIVERBANK SECTION
Scale: 1:100

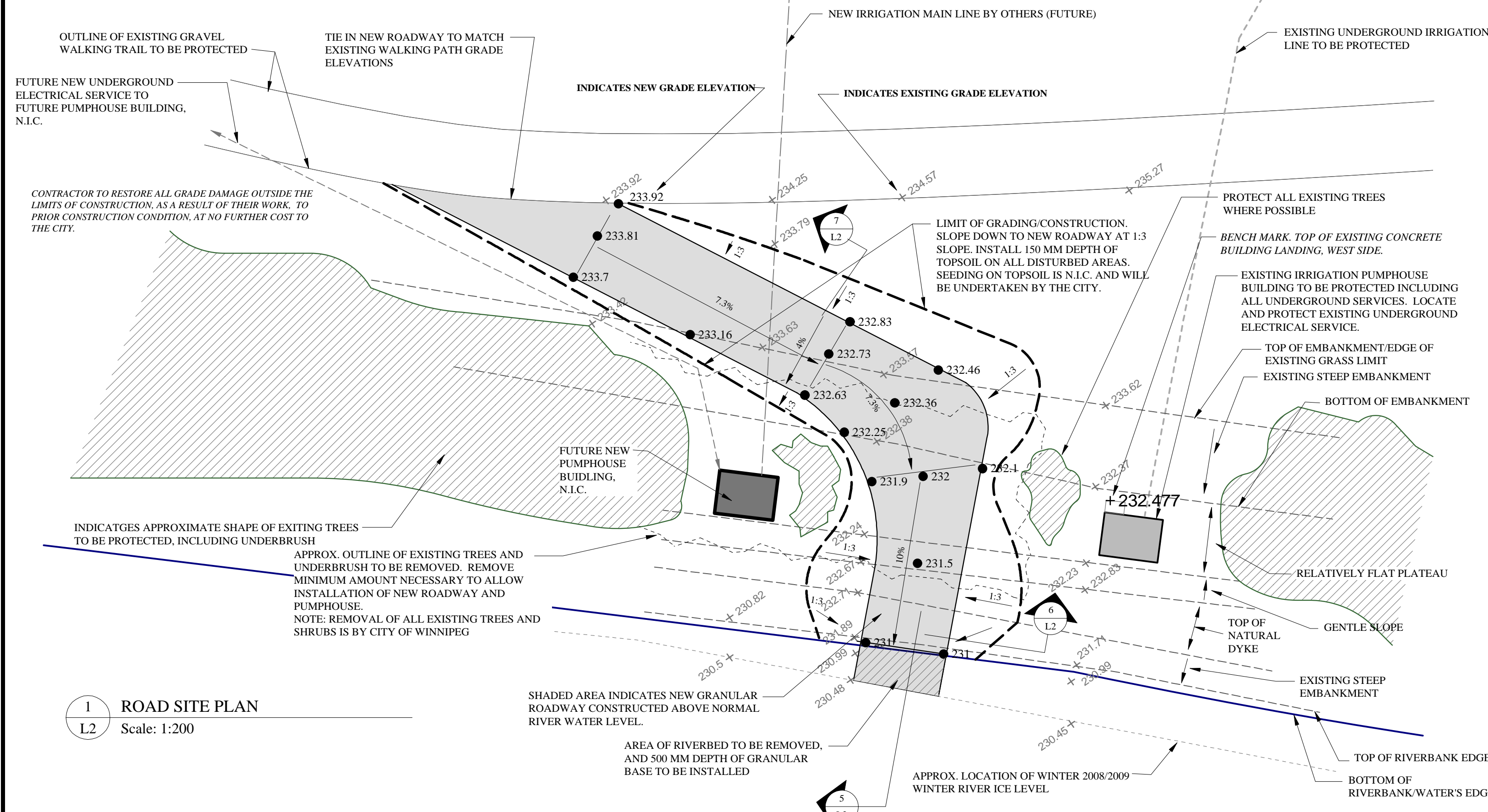


6 NEW ROADWAY CROSS SECTION
Scale: 1:100

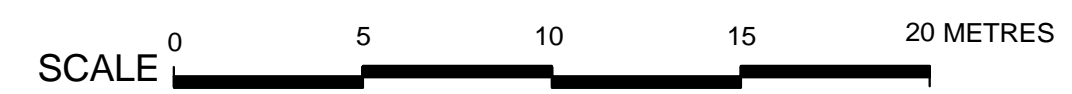


7 NEW ROADWAY CROSS SECTION
Scale: 1:100

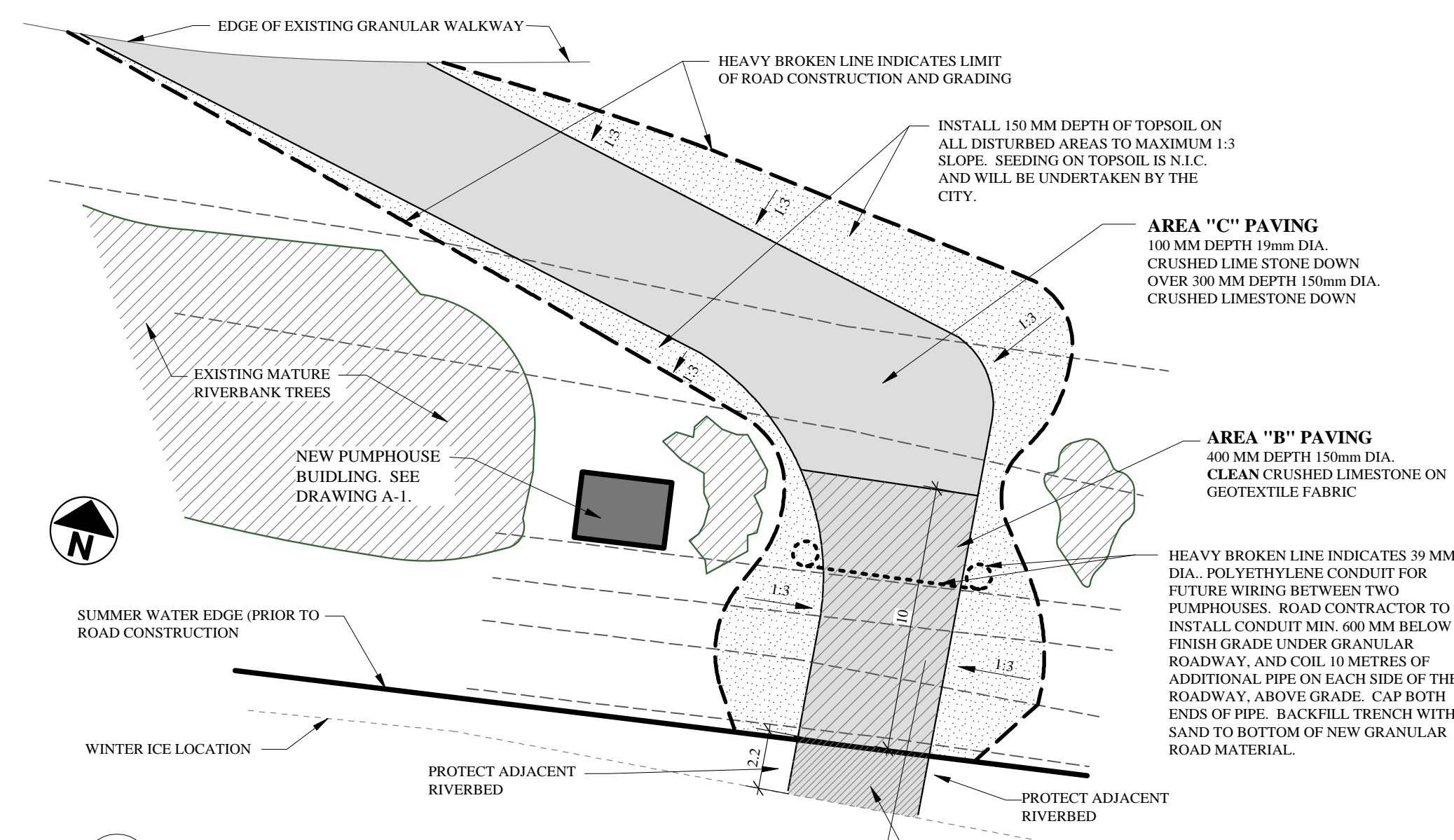
NOTE: THE EXISTING IRRIGATION PUMPHOUSE'S ELECTRICAL SERVICE RUNS WESTWARD UNDERGROUND. LOCATE AND PROTECT THE LINE PRIOR TO EXCAVATING THE ROADWAY. NOTIFY CONTRACT ADMINISTRATOR OF ANY CONFLICTS WITH THE NEW ROADWAY, PRIOR TO CONSTRUCTION.



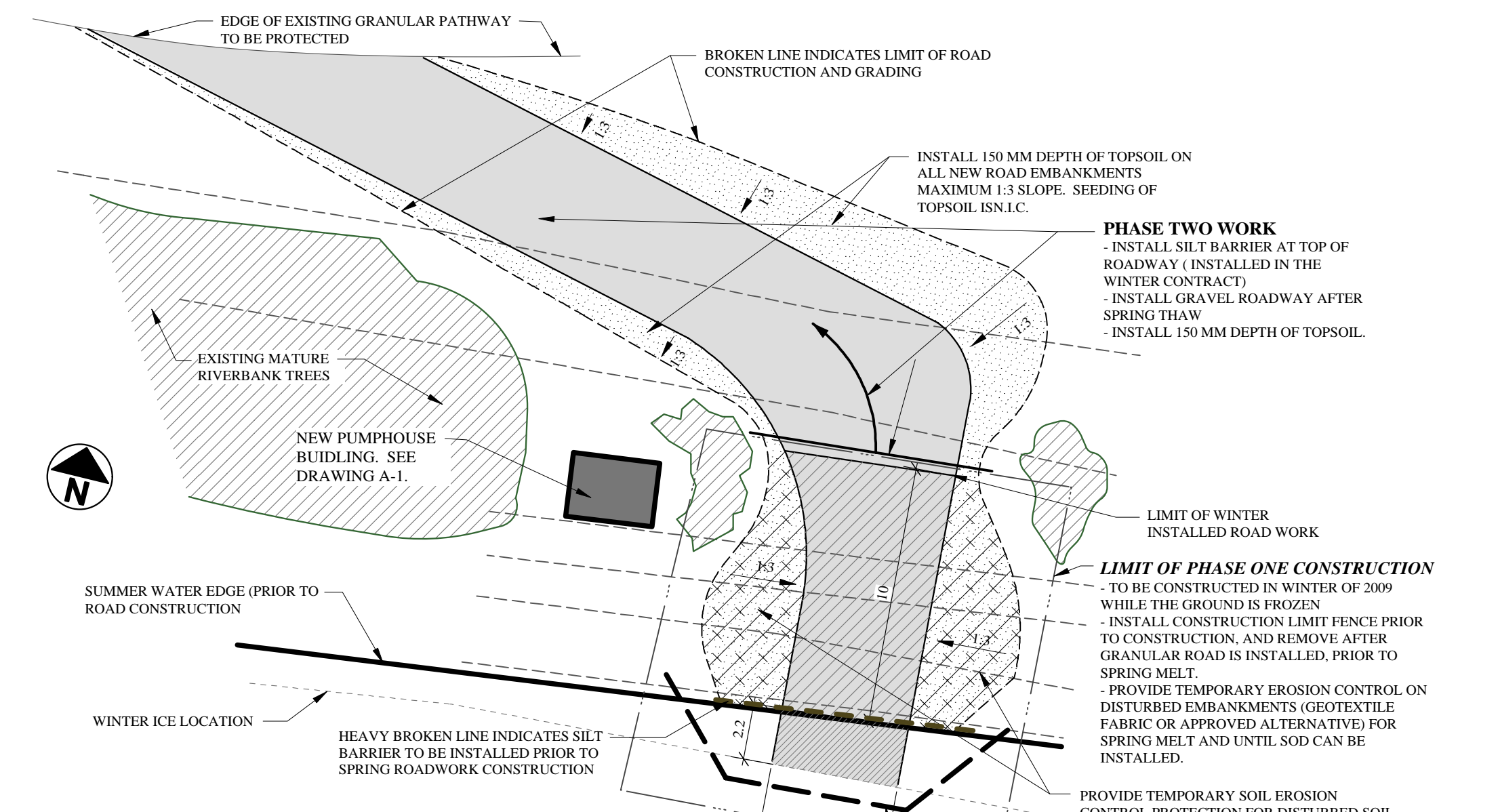
1 ROAD SITE PLAN
Scale: 1:200



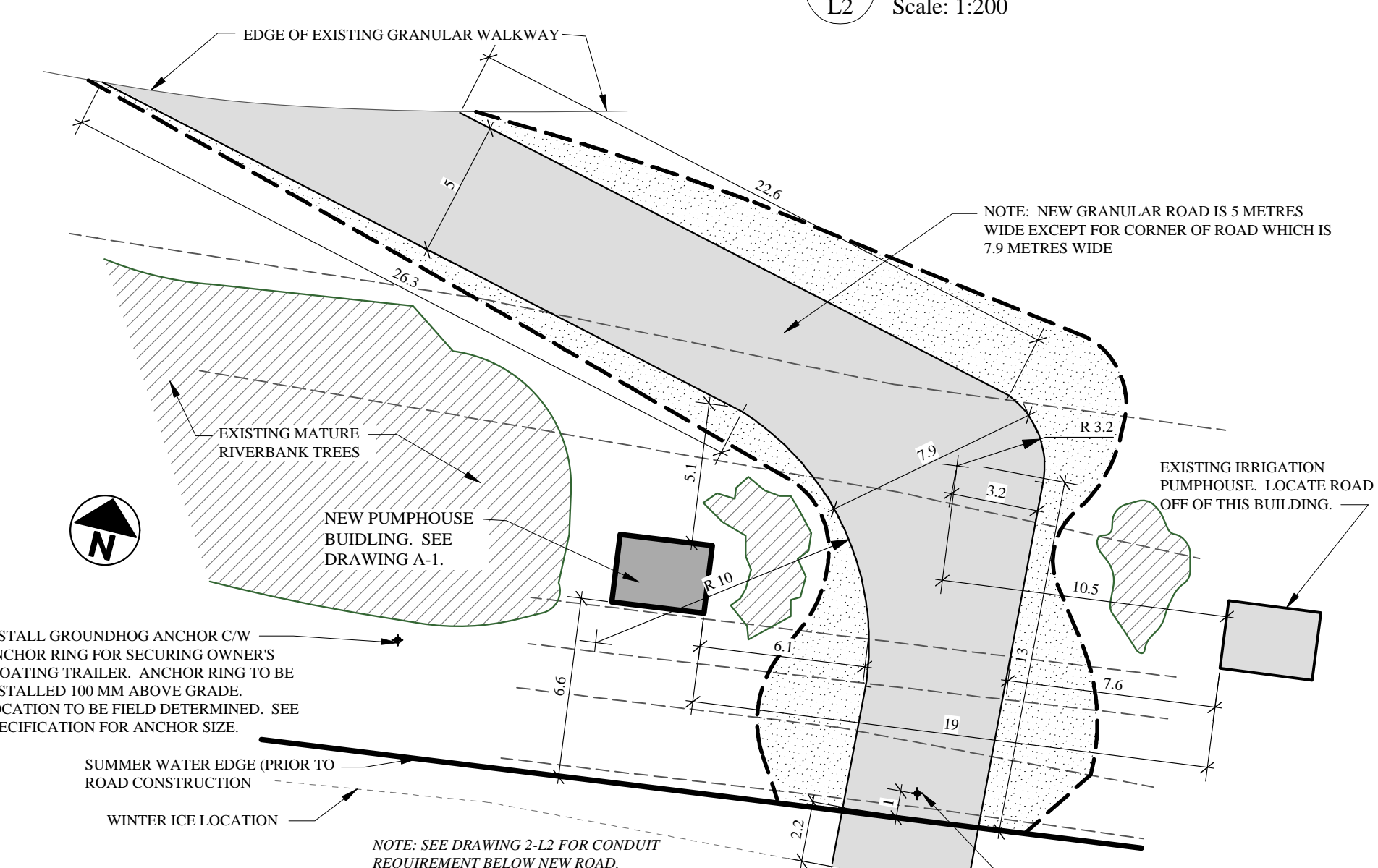
NOTE: ALL GRADE ELEVATIONS SHOWN ARE IN METRES AND HUNDREDS OF A METRE. LOCAL BENCH MARK IS TOP OF EXTERIOR CONCRETE SLAB ON EXISTING PUMPHOUSE DOOR ENTRANCE. ELEV. 232.477 GEODETIC. ALL GRADES WERE SURVEYED ON NOV. 20, 2008 BY KEN RECH LANDSCAPE ARCHITECTS IN CONJUNCTION WITH MICHALENKO SURVEYS.



2 SURFACE RESTORATION PLAN
Scale: 1:200



3 EROSION CONTROL AND PHASING PLAN
Scale: 1:200



4 ROAD LAYOUT PLAN
Scale: 1:200

PROJECT TITLE			
JOHN BLUMBERG SOCCER COMPLEX			
NO.	REVISIONS	BY	DATE
1	REVISE GRAVEL TYPES - DETAIL 2.7	K.R.	FEB.109
KEN RECH LANDSCAPE ARCHITECTS INC. 1480 Wellington Crescent Winnipeg Manitoba Fax 489-6852 R3N 0B3 Tel(204) 489-6616			
DRAWING TITLE		DRAWN BY	SCALE
NEW IRRIGATION PUMPHOUSE ROAD PLAN & EROSION CONTROL REQUIREMENTS		K.R.	AS NOTED
		PRINT DATE	DATE
		Feb.1/09	JAN. 19/09
FILE NO.	REVISION	SHEET NO.	
08-22	1	L2.r1	