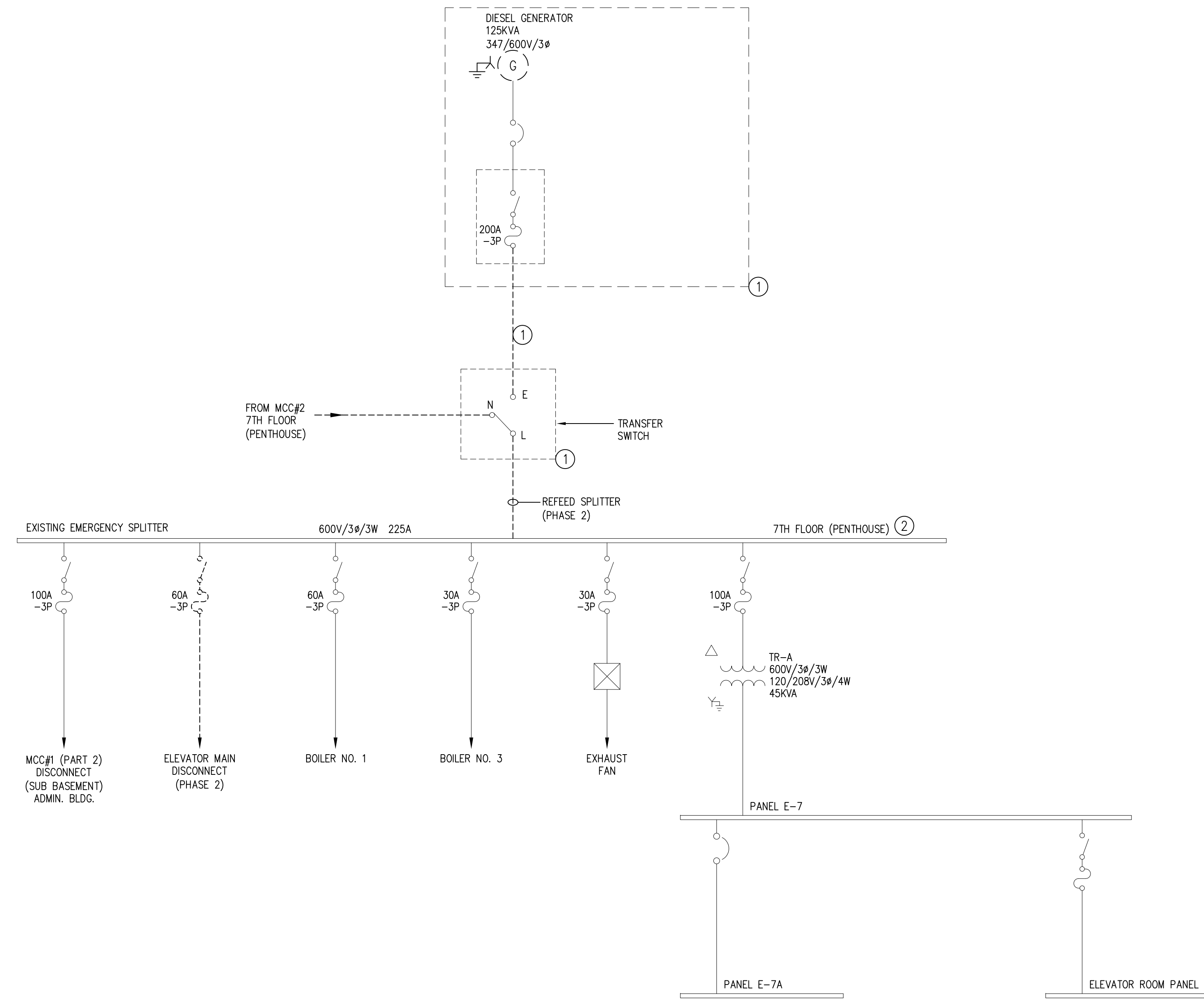


DRAWING NOTES #

1. ISSUED FOR INFORMATION ONLY. EXISTING EQUIPMENT TO REMAIN UNTIL COMPLETION OF PHASE 2, AFTER WHICH IT IS TO BE DEMOLISHED.
2. REFEEED IN PHASE 2 FROM NEW EMERGENCY CDP.



SMS ENGINEERING

SMS Engineering Ltd. Consulting Engineers
 770 Bradford Street Winnipeg MB Canada R3H 0K3
 Telephone 204.775.0291 Fax 204.772.2153
 sms@smseng.com

07-232-01

2. ISSUED FOR ADDENDUM NO. 2 CB 09.07.27
1. ISSUED FOR BID OPPORTUNITY CB 09.06.19

NO.	REVISION/DESCRIPTION	BY	DATE

SEALS



DRAWN BY: KAM	CHECKED BY: CR	APPROVED CH:
DATE: 2008/04/17	USER APPROVAL	

CITY OF WINNIPEG
 PLANNING, PROPERTY &
 DEVELOPMENT DEPARTMENT
 CIVIC ACCOMMODATIONS DIVISION
 300 - 65 GARRY ST. R3C 4K4

PROJECT
 CITY OF WINNIPEG 510 MAIN ST.
 EMERGENCY DISTRIBUTION UPGRADE
 PHASE 1

SHEET TITLE
 EXISTING EMERGENCY GENERATOR
 SINGLE LINE SCHEMATIC

SCALE AS SHOWN	PROJECT NO. 07-232-01	SHEET NO. E3.2
-------------------	--------------------------	-------------------