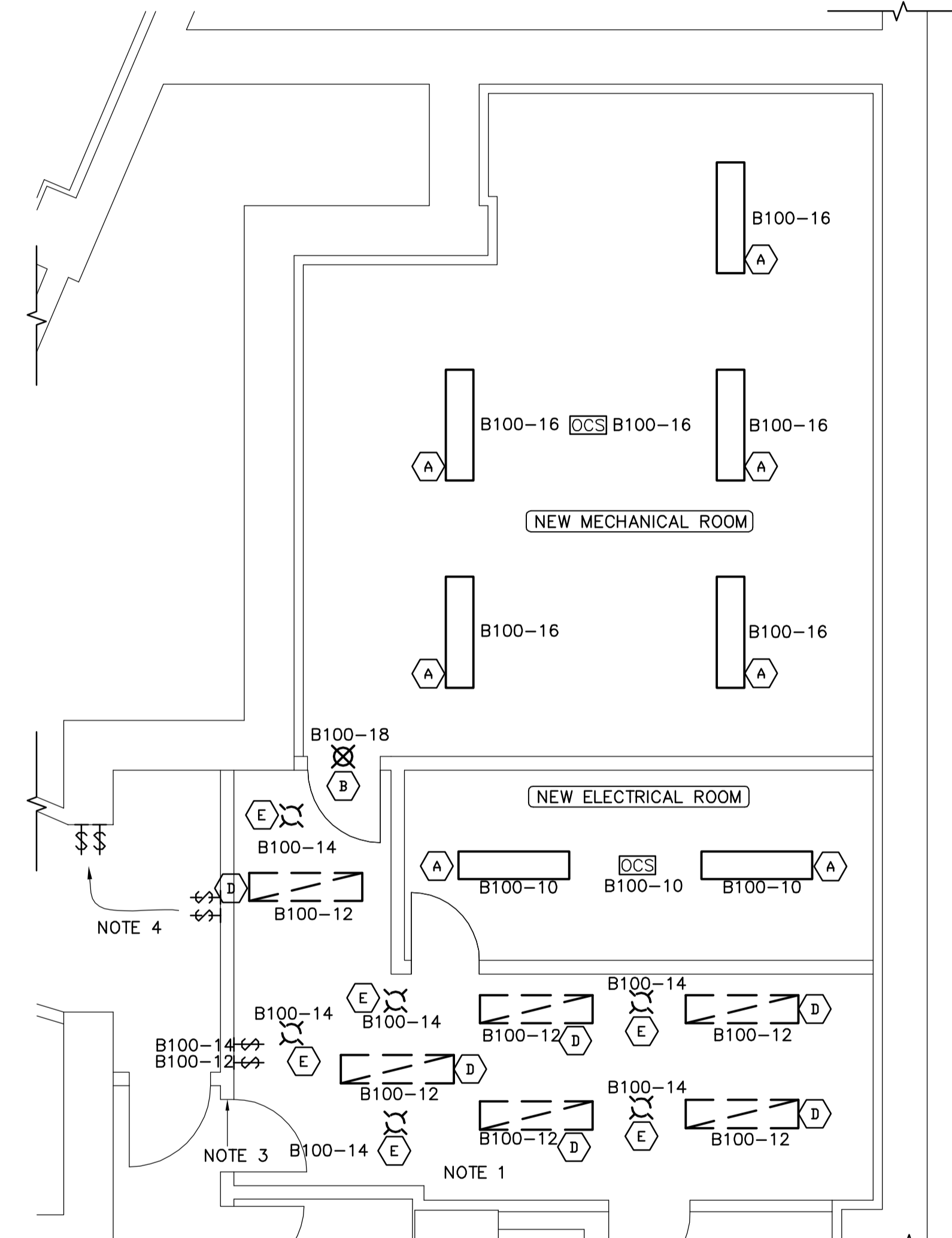


1 MECHANICAL/ELECTRICAL ROOM - DISTRIBUTION PLAN
SCALE 1:50



2 MECHANICAL/ELECTRICAL ROOM - LIGHTING PLAN
SCALE 1:50

- NOTES :
- CONSTRUCTION NOTES**
- 1 Remove existing cables feeding Type D and Type E lights back to panelboard. Refeed Type D and Type E lights as indicated from panelboard B100.
 - 2 Boiler emergency disconnect switches.
 - 3 Remove card swipe system prior to demolition and reinstall after installation of new door and wall.
 - 4 Relocate switches as shown prior to wall demolition
 - 5 Install receptacles at 2500 AFF for Type C lighting. Refer to specs for height of other receptacles
 - 6 Remove all existing communications cabling in their entirety from new mechanical and electrical room back to the distribution source.
 - 7 Remove existing feed cable for exhaust fan back to source. Refeed from B100
 - 8 Connect fire alarm to existing fire alarm system

1	ISSUED FOR ADDENDUM 2	ES	2008.12.13
0	ISSUED FOR ADDENDUM 1	ES	2008.12.05
NO.	REVISION/DESCRIPTION	BY	DATE

SEALS



DRAWN BY	DL	CHECKED BY	APPROVED
DATE	2008.12.05	USER APPROVAL	

Winnipeg CITY OF WINNIPEG
PLANNING, PROPERTY AND
DEVELOPMENT DEPARTMENT
CIVIC ACCOMMODATIONS DIVISION
300 - 65 GARRY ST. R3C 4K4

PROJECT
CONFEDERATION BUILDING
SUPPLEMENTARY HEATING UPGRADES
PHASE 1 - CITY BID OPP. NO. 757-2008
457 MAIN STREET, WINNIPEG, MANITOBA

SHEET TITLE
BASEMENT LEVEL
ELECTRICAL ROOM LAYOUTS



AECOM
© 2008 EARTH TECH (CANADA) INC. ALL RIGHTS RESERVED.
THIS DOCUMENT IS PROTECTED BY COPYRIGHT LAW AND MAY NOT BE USED, REPRODUCED OR MODIFIED IN ANY MANNER OR FOR ANY PURPOSE EXCEPT WITH THE WRITTEN PERMISSION OF EARTH TECH (CANADA) INC. DOING BUSINESS AS AECOM (AECOM) OR A PARTY TO WHICH ITS COPYRIGHT HAS BEEN ASSIGNED. AECOM ACCEPTS NO RESPONSIBILITY, AND DENIES ANY LIABILITY WHATSOEVER, TO ANY PARTY THAT USES, REPRODUCES, MODIFIES, OR RELIES ON THIS DOCUMENT WITHOUT AECOM'S EXPRESS WRITTEN CONSENT.

SCALE	PROJECT NO.	SHEET NO.
AS SHOWN	105111	E03