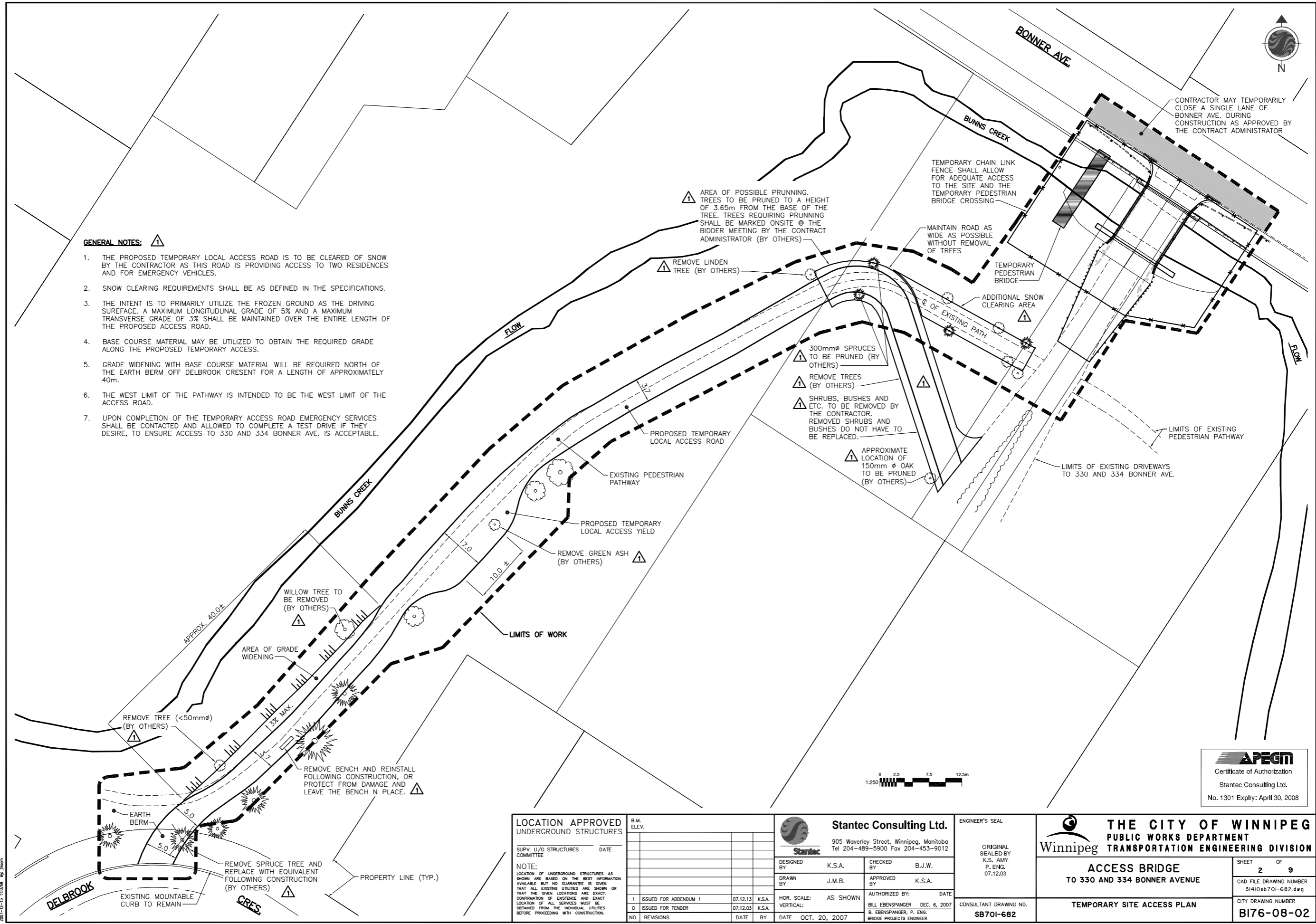




GENERAL NOTES:

1. THE PROPOSED TEMPORARY LOCAL ACCESS ROAD IS TO BE CLEARED OF SNOW BY THE CONTRACTOR AS THIS ROAD IS PROVIDING ACCESS TO TWO RESIDENCES AND FOR EMERGENCY VEHICLES.
2. SNOW CLEARING REQUIREMENTS SHALL BE AS DEFINED IN THE SPECIFICATIONS.
3. THE INTENT IS TO PRIMARILY UTILIZE THE FROZEN GROUND AS THE DRIVING SURFACE. A MAXIMUM LONGITUDINAL GRADE OF 5% AND A MAXIMUM TRANSVERSE GRADE OF 3% SHALL BE MAINTAINED OVER THE ENTIRE LENGTH OF THE PROPOSED ACCESS ROAD.
4. BASE COURSE MATERIAL MAY BE UTILIZED TO OBTAIN THE REQUIRED GRADE ALONG THE PROPOSED TEMPORARY ACCESS.
5. GRADE WIDENING WITH BASE COURSE MATERIAL WILL BE REQUIRED NORTH OF THE EARTH BERM OFF DELBROOK CRES FOR A LENGTH OF APPROXIMATELY 40m.
6. THE WEST LIMIT OF THE PATHWAY IS INTENDED TO BE THE WEST LIMIT OF THE ACCESS ROAD.
7. UPON COMPLETION OF THE TEMPORARY ACCESS ROAD EMERGENCY SERVICES SHALL BE CONTACTED AND ALLOWED TO COMPLETE A TEST DRIVE IF THEY DESIRE, TO ENSURE ACCESS TO 330 AND 334 BONNER AVE. IS ACCEPTABLE.



NO.	REVISIONS	DATE	BY
1	ISSUED FOR ADDENDUM 1	07.12.13	K.S.A.
0	ISSUED FOR TENDER	07.12.03	K.S.A.

Stantec Consulting Ltd.		ENGINEER'S SEAL	
905 Waverley Street, Winnipeg, Manitoba Tel 204-489-5900 Fax 204-453-9012		ORIGINAL SEALED BY K.S. AMY P. ENG. 07.12.03	
DESIGNED BY: K.S.A.	CHECKED BY: B.J.W.	AUTHORIZED BY: DATE BILL EBENSPANGER DEC. 6, 2007 B. EBENSPANGER, P. ENG. BRIDGE PROJECTS ENGINEER	
DRAWN BY: J.M.B.	APPROVED BY: K.S.A.		
HOR. SCALE: AS SHOWN		CONSULTANT DRAWING NO. SB701-682	
VERTICAL: AS SHOWN		DATE OCT. 20, 2007	

THE CITY OF WINNIPEG PUBLIC WORKS DEPARTMENT TRANSPORTATION ENGINEERING DIVISION		SHEET 2 OF 9
ACCESS BRIDGE TO 330 AND 334 BONNER AVENUE		CAD FILE DRAWING NUMBER 31410sb701-682.dwg
TEMPORARY SITE ACCESS PLAN		CITY DRAWING NUMBER B176-08-02

U:\Projects\117571\117571_000\117571_000.dwg 08/20/07 11:07AM