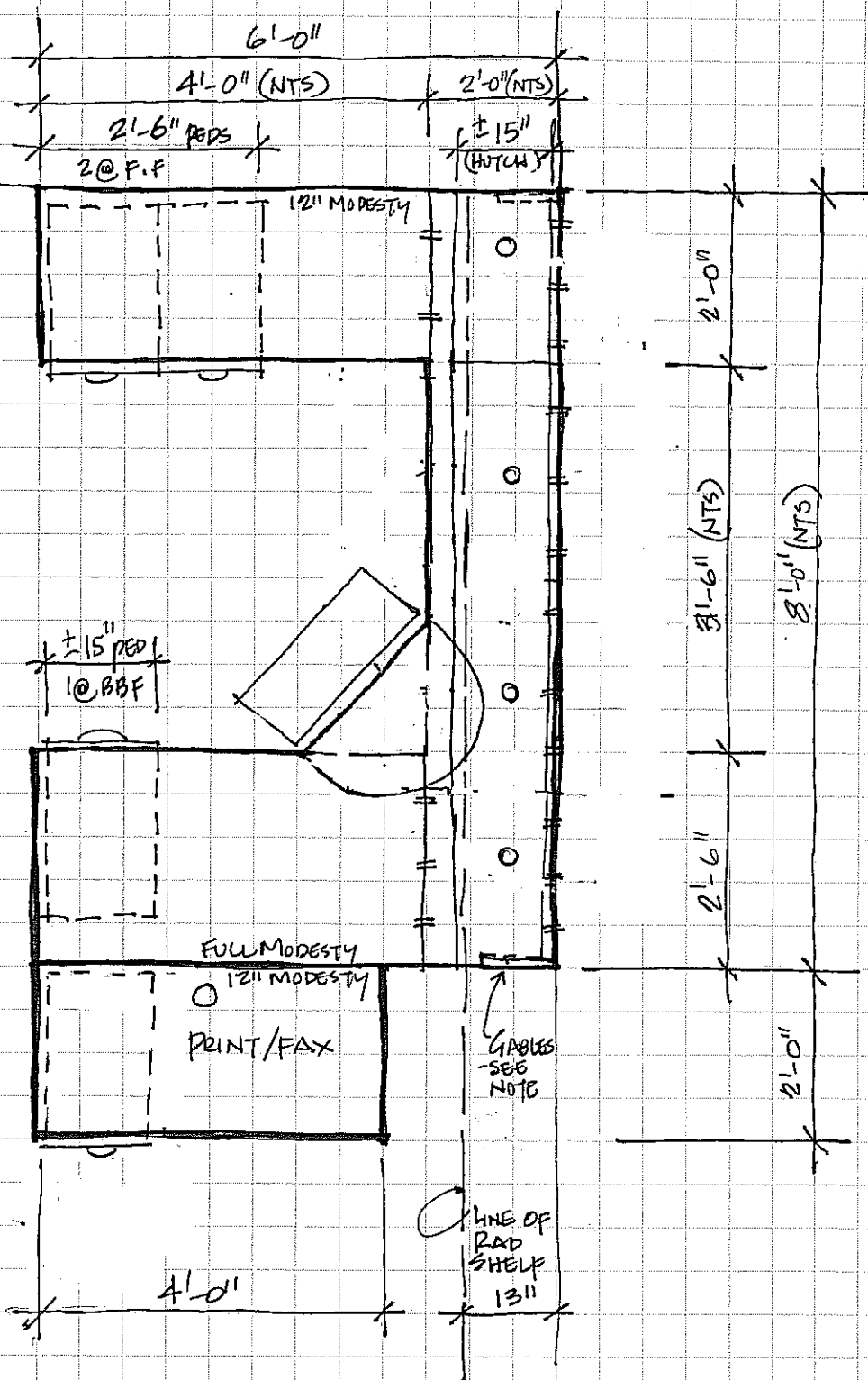


- KEYBOARD TRAY / DRAWER
- CORNER MANNER METAL SLEEVE
- 4 PEDS,
  - 1 @ FIXED, FF FOR PRINTER STATION
  - 3 @ MOBILE, LOCKABLE, KEYED ALIKE
  - 1 @ BBF
  - 2 @ F.F.
- STANDARD HUTCH
- 5 GROMMETS
- 24" WORKSURFACE OVER RAD/SHELF MTD TO WAW ON LEATHER STRIP AND ATTACHED TO OTHER FREE-STANDING LEGS OR PIECES. GABLES MAY ALSO BE USED AS REQ'D SET ATOP RAD SHELF. APPROX HEIGHT OF RAD SHELF IS 8" - VERIFY ON SITE
- ATTACH CORNER SLEEVES W. SCREWS. ATTACH KEYBOARD TO SLEEVES + DESK
- LAMINATE COLORS.
  - CARCASS: "SLATE"
  - WORKSURFACES + HUTCHES: "HARD ROCK MAPLE"
- TACKBOARD COLOR: #68, "SILVER"



WEST KILDONAN LIBRARY  
365 JEFFERSON AVE

WORK ROOM + COMMON  
PRINT/FAX STATION

DRAWING A24 R1  
SDH AUG '07