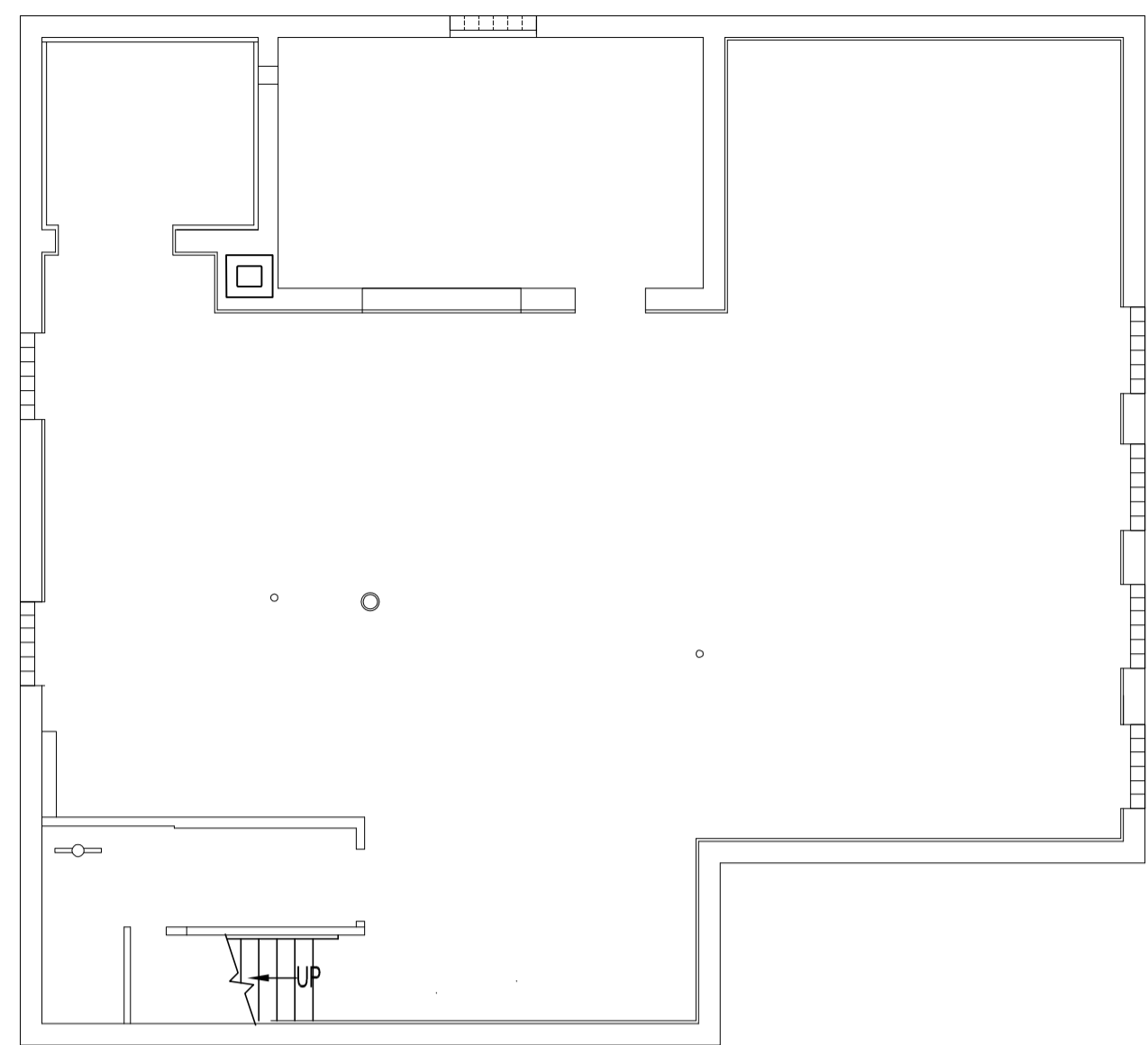


PROJECT No.: 2004-023  
 ADDRESS: 1400 HENDERSON HWY.  
 DESCRIPTION: BASEMENT FLOOR PLAN - PLUMBING DEMOLITION & RENOVATION  
 DATE: 2007-10-11  
 FILE NAME: 2004023M5R1.dwg



**BASEMENT FLOOR PLAN - PLUMBING DEMOLITION**  
 SCALE: 1/8"=1'-0"

**PLUMBING DEMOLITION NOTES**

REMOVE ALL EXISTING PLUMBING LINES, FIXTURES AND VALVES BACK TO SOURCE. SEE DRAWING M4 FOR IN-FLOOR PLUMBING.

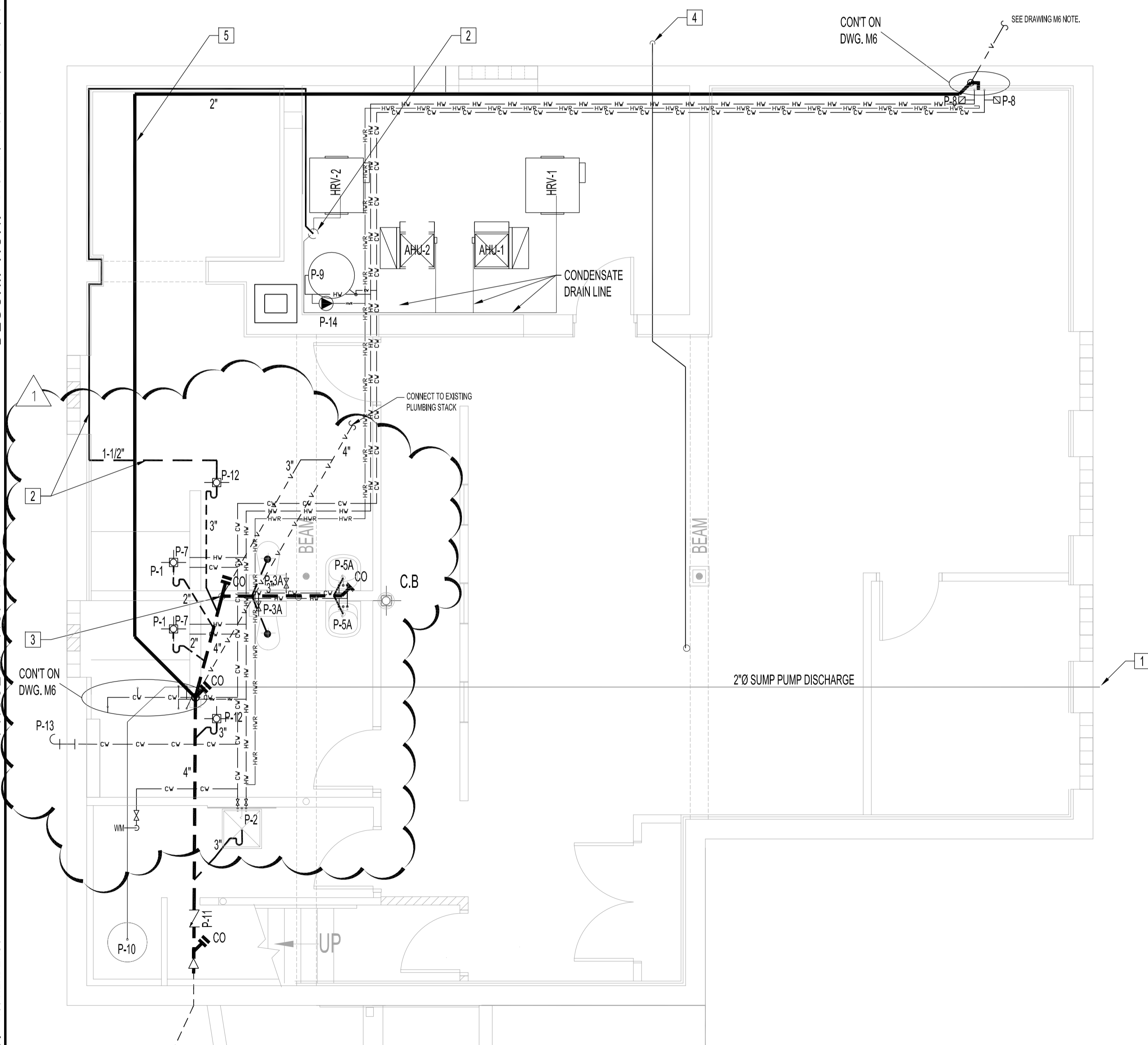
**PLUMBING RENOVATION NOTES:**

SUPPLY & INSTALL, UNLESS OTHERWISE NOTED.

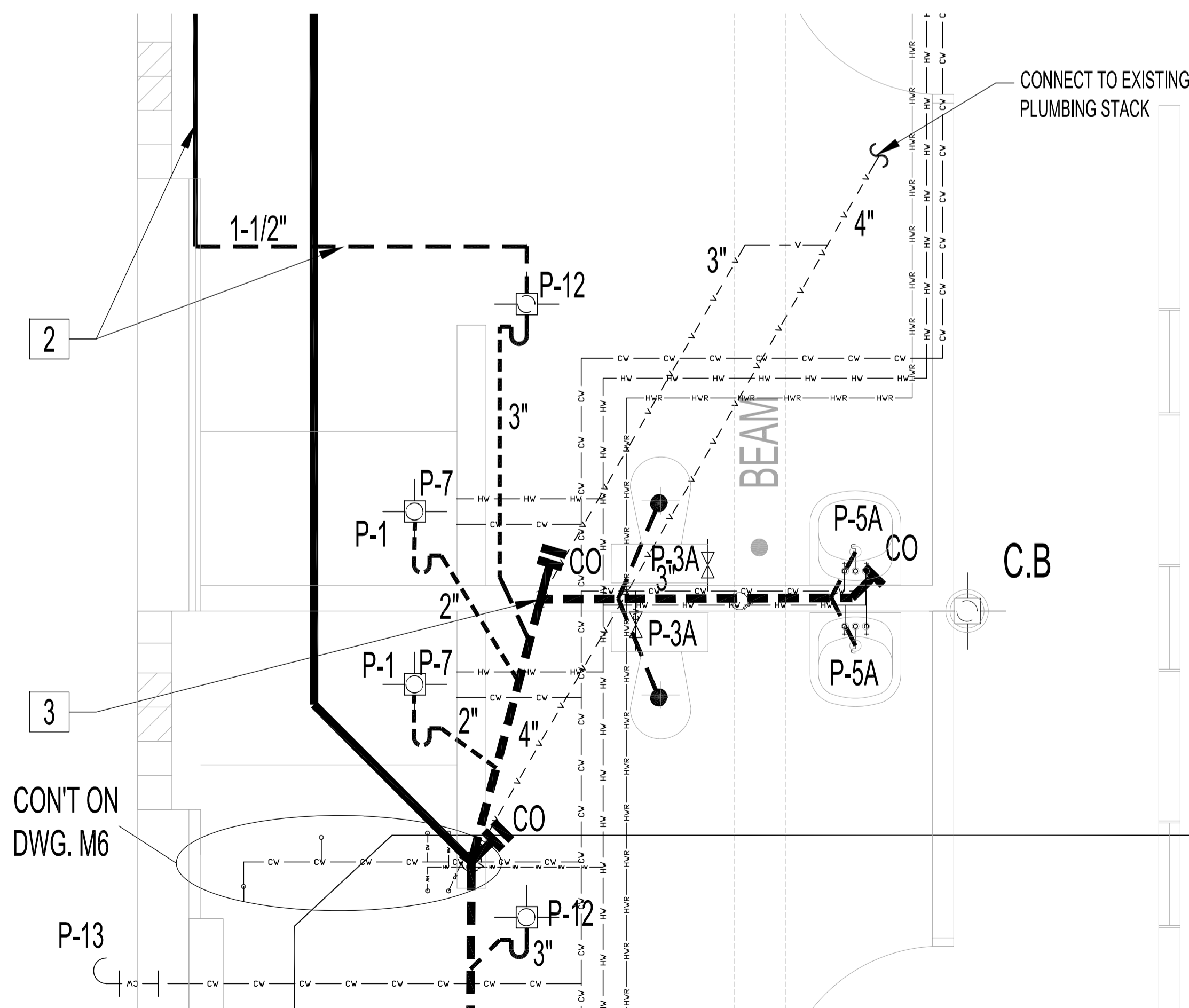
- 1 SUPPLY & INSTALL 2" COPPER DISCHARGE LINE FOR SUMP PUMP, P-10, & SUMP PIT WITH FLEX/EXPANSION CONNECTOR. ROUTE UP TO UNDERSIDE OF FLOOR JOIST. TERMINATE OUTSIDE WITH (2) 90° ELBOWS 12" FROM FINISH GRADE. INSULATE 8 FEET OF LINE FROM EXTERIOR WALL WITH 1/2" THICK PIPE INSULATION & ASJ (ALL SERVICE JACKET).
- 2 CONDENSATE DRAIN CONSIST OF 1-1/4" COPPER PIPE (ABOVE GRADE) WITH DRAIN FUNNEL MOUNTED 6" ABOVE FLOOR (FLUSH WITH WALL) & SLOPED TO CONNECT BELOW FLOOR (1-1/2" PVC PIPE BELOW GRADE) TO NEW FLOOR DRAIN, SEE DRAWING M4. ROUTE AS SHOWN. INSIDE NEW WALL CAVITY, PROTECT PIPE INSIDE WALL CAVITY WITH STUD STEEL PROTECTORS.
- 3 ROUTE INSIDE WALL UP TO ATTIC SPACE TO TIE INTO EXISTING PLUMBING STACK.
- 4 EXTEND ROOF DRAIN DISCHARGE WITH PIPE & 90° ELBOWS. TERMINATE 12" FROM BUILDING & 12" ABOVE SPLASH PAD.
- 5 SANITARY DRAIN FROM KITCHEN SINK TO VERTICAL DWV STACK. RUN UNDERSIDE FLUSH WITH FINISHED CEILING. PAINT TO MATCH FINISH CEILING.

| PLUMBING SCHEDULE |      |  |
|-------------------|------|--|
| TAG               | TYPE | DESCRIPTION  |
| P-1               |      | BUILT-IN SHOWER (SEE ARCH. DRAWING) SUPPLY & INSTALL 2" SHOWER FLOOR DRAIN ASSEMBLY.   |
| P-2               | ⊗    | SK-1 JANITOR MOP SINK, FLOOR MOUNTED. STERN WILLIAMS #MTB-2424 MOP SINK, 24"x24"x10" DEEP, FLOOR MOUNTED. PRECAST TERRAZZO AND INTEGRAL DRAIN WITH STRAINER, 'BP' S.S. BACK SPLASH PANELS. STERN-WILLIAMS #T-10-VB FAUCET, C.P. 8" C.C. WALL MOUNTED. SOLID CAST BRASS BODY, WITH CAST METAL HANDLES, VACUUM BREAKER, INTEGRAL STOPS, #T-35 S.S. BRACKET, 3/8" HOSE WITH C.P. COUPLING, #T-40 S.S. MOP (TRIPLE) HANGER, 'P' TRAP, 3".                            |
| P-3A              | ⊕    | CAROMA, CARAVELLE 270 ADA ELONGATED WASHDOWN DUAL FLUSH (8)3 LITRES, VITREOUS CHINA, ADA DISABLE BUTTON PART #405067, C/W TOILET SEAT, COLOR: WHITE, CRANE BRASS BALL SHUT-OFF VALVE & TOILET CONNECTORS.  |
| P-5A              | ⊕    | AMERICAN STANDARD, MURRO # 0954.000 WALL HUNG LAVATORY, VITREOUS CHINA WITH 4" CENTERS FITTED WITH DELTA MIXING/ SENSING ELECTRONIC FAUCET, DELTA MODEL 596-LGHGMHDF, C/W TRANSFORMER, SOLENOID VALVE AND CONTROL BOX. CAST WHEELCHAIR LAVATORY WASTE, DELTA 33T290 CAST "P" TRAP, DELTA 33T311, CHROME ANGLE LAVATORY SUPPLIES, DELTA 47T2512SD, (MOUNT TRANSFORMER IN WALL CAVITY WITH ACCESS PANEL, ONE TRANSFORMER PROVIDES POWER TO ALL ELECTRONIC FAUCETS) |
| P-7               |      | PRESSURE BALANCE VALVE WITH STOP- SELECTION RIOBEL MODEL J051C, CHROME FINISH. ELBOW SUPPLY- SELECTION RIOBEL MODEL 747-C, CHROME FINISH. CLASSICO HANDSHOWER WITH 6 FEET HOSE-SELECTION MODEL 6006-C, CHROME FINISH   |
| P-8               | ⊕    | ZURN SHOKTROL Z-1700 WATER HAMMER ARRESTOR, SIZE 200.  |
| P-9               | ⊕    | A.O. SMITH, MODEL BTH-120 "CYCLONE", EXTRA HIGH EFFICIENCY CONDENSING WATER HEATER, DIRECT VENT NATURAL GAS, 60 US GALLON CAPACITY, 120,000 BTUH INPUT, 3/4" GAS VALVE PIPING  |
| P-10              |      | GRUNDFOS "THE BOSS" MODEL 300 STAINLESS STEEL SUBMERSIBLE SUMP PUMP WITH FLOAT SWITCH 23 GPM @ 20FT HEAD, 1/2HP, 9AMP, 115V/60HZ/1PH. ACCESSORIES TO INCLUDE CHECK VALVE, FITTINGS & "SABER" SUMP PIT WITH EXTENSIONS (TOTAL DEPTH 6 FEET) C/W SUMP PUMP HOOK-UP, PIPE FITTINGS AND DISCHARGE ASSEMBLY.  |
| P-11              | Z    | ZURN Z-1095-15, 4" BACKWATER VALVE WITH FLOOR LEVEL CLEANOUT. ADDITIONAL CAST IRON PIPE EXTENSIONS, IF REQUIRED.   |
| P-12              | ⊕    | ZURN # ZKN-211-A, 3" FLOOR DRAIN WITH HEAVY-DUTY, NICKEL BRONZE ROUND STRAINER   |
| P-13              | ⊕    | ZURN #Z1305-VB, WALL HYDRANT WITH ADAPTER VACUUM BREAKER ENCASED, NON FREEZE.  |
| P-14              | ⊕    | GRUNDFOS #UP15-185U STAINLESS STEEL BODY CIRCULATOR 1.9 US GPM @ 6.9 FT 120V/1/25 HP.  |
| P-15              | ⊕    | STAINLESS STEEL 1-BOWL KITCHEN SINK WITH FAUCET LEDGE- KINDRED MODEL QSL2020-8-3. KITCHEN FAUCET WITH SPRAY 3-HOLE- MOEN MODEL 47134.  |

NOTES :  
 SEE NOTES ON DRAWING M1.



**BASEMENT FLOOR PLAN - PLUMBING RENOVATION**  
 SCALE: 1/4"=1'-0"



**ENLARGED PARTIAL BASEMENT FLOOR PLAN - PLUMBING RENOVATION**  
 SCALE: 1/2"=1'-0"

ORIGINAL STAMPED BY: DOUG PALEY, P. ENG.  
 DATE: 2007.11.15

SEE ADDENDUM 4, BID OPPORTUNITY 639-2007, REVISED DUE TO WASHROOMS & SHOWERS WERE SEPARATED BY WALLS & UNIVERSAL DESIGN REQUIREMENTS. P-1 WAS ONE-PIECE SHOWER UNIT, DELETED P-3 & P-6. ADDED P-15 & HAND SHOWER, ELBOW SUPPLY TO P-7.

| NO. | REVISION/DESCRIPTION | BY | DATE |
|-----|----------------------|----|------|
|     |                      |    |      |

SEALS

| DRAWN BY | RCPI/DTA   | CHECKED BY    | APPROVED |
|----------|------------|---------------|----------|
| DATE     | 2007.10.11 | USER APPROVAL |          |

**CITY OF WINNIPEG**  
 PLANNING, PROPERTY & DEVELOPMENT DEPARTMENT  
 CIVIC ACCOMMODATIONS DIVISION  
 300 - 65 GARRY ST. R3C 4K4

PROJECT  
 COMMUNITY POLICE SERVICE CENTRE

1400 HENDERSON HWY.  
 SHEET TITLE

BASEMENT FLOOR PLAN  
 PLUMBING  
 DEMOLITION & RENOVATION

| SCALE    | PROJECT NO. | SHEET NO. |
|----------|-------------|-----------|
| AS SHOWN | 2004-023    | M5R1      |

DRAWING SHEET SIZE: A1 (841mm x 594mm) PLOT 1:1