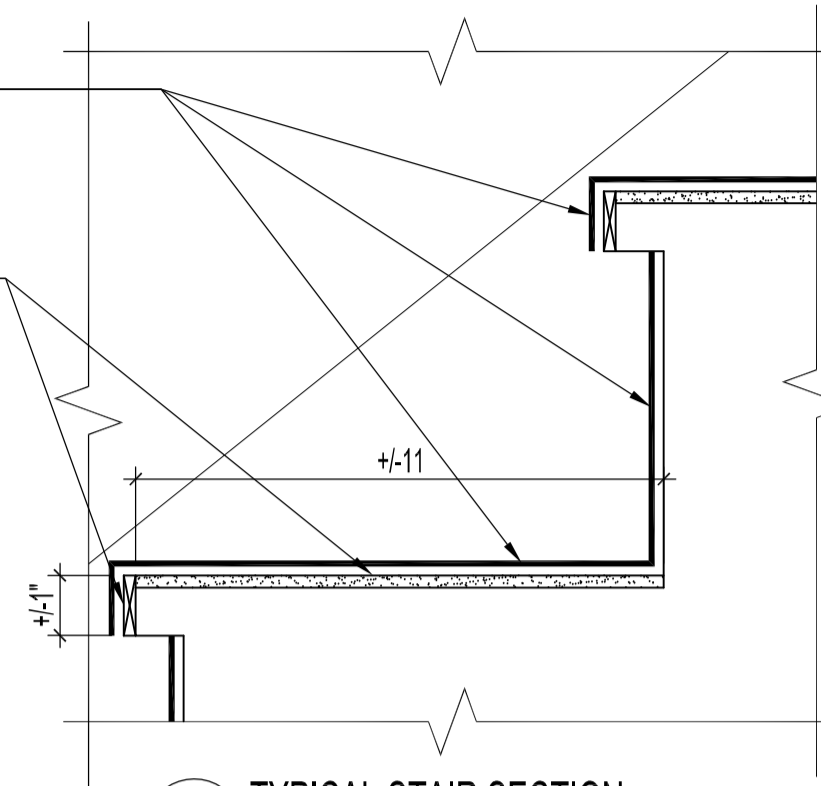


NEW FLOOR BOARDS - SEE LEGEND

NEW RUBBER TREADS, RISERS & NOSING - SEE LEGEND

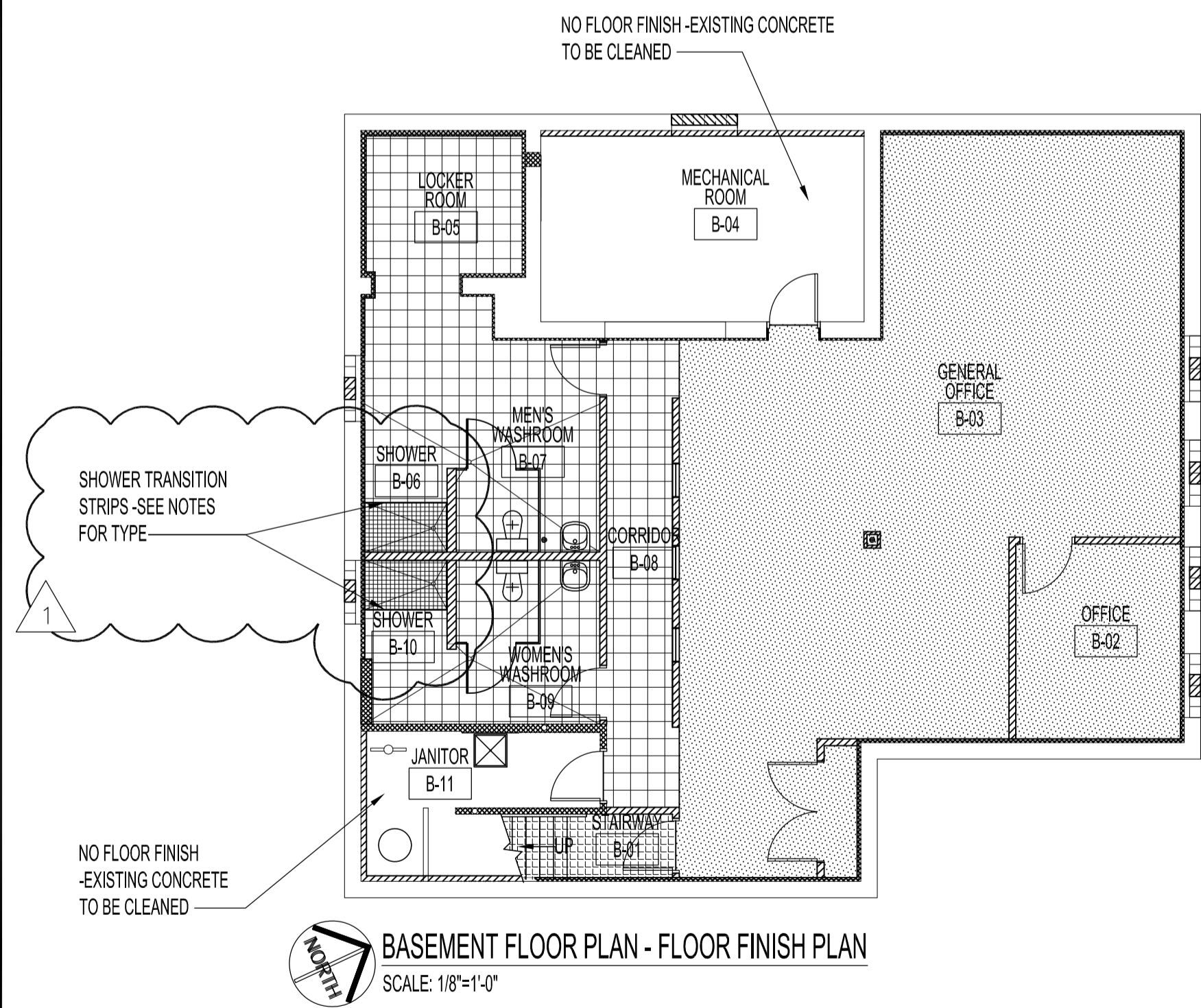
PROVIDE 1 1/4\" x 1/4\" WOOD TRIM ON EXISTING NOSINGS & 1/4\" PRO BOARD ON ALL EXISTING TREADS & LANDING. TYPICAL FOR ALL INTERIOR STAIR TREADS. SEE ROOM FINISH SCHEDULE & FLOOR FINISH PLAN DWG. FOR STAIR FINISHES.



TYPICAL STAIR SECTION SCALE: 3\"/>

NOTES:
 PROVIDE BLACK RUBBER TRANSITION STRIPS AT LOCATIONS WHERE FLOOR FINISH CHANGES.
 PROVIDE TRANSITION STRIPS IN SHOWERS B-06 & B-10 - SCHLUTER RENO AEU-100 ANODIZED ALUMINIUM

MAIN FLOOR PLAN - FLOOR & STAIR RENOVATION SCALE: 1/8\"/>



NO FLOOR FINISH - EXISTING CONCRETE TO BE CLEANED

SHOWER TRANSITION STRIPS - SEE NOTES FOR TYPE

NO FLOOR FINISH - EXISTING CONCRETE TO BE CLEANED

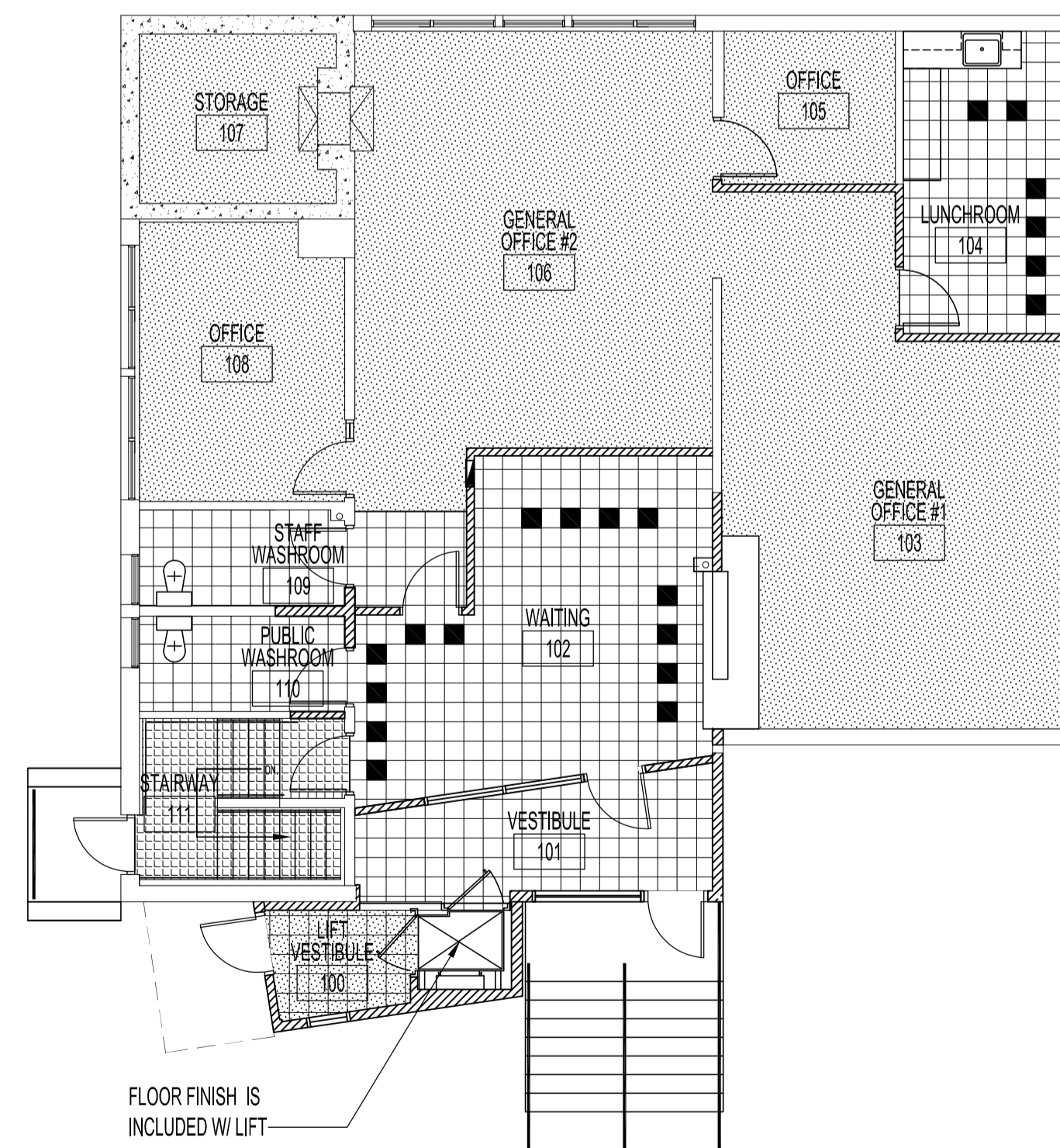
BASEMENT FLOOR PLAN - FLOOR FINISH PLAN SCALE: 1/8\"/>

LEGEND

MAIN FLOOR PLAN - FLOOR RENOVATION
 PROVIDE 5/8\" SELECT SHEATHING GRADE T & G PHENOLIC BONDED DOUGLAS FIR PLYWOOD TO ALL AREAS HATCHED W/ FACE GRAIN PERPENDICULAR TO JOISTS & JOINTS STAGGERED TO PROVIDE A FIRE RATED ASSEMBLY OF 3/4 HR. FILL ANY OPENINGS AS REQUIRED PRIOR TO PLYWOOD INSTALLATION. STAIRS REQUIRES OTHER FLOOR FINISHES - SEE STAIR SECTION

MAIN FLOOR ASSEMBLY FIRE RESISTANT RATING
 PROVIDE A 3/4 HR. FIRE RESISTANT RATING BETWEEN BASEMENT & MAIN FLOOR ASSEMBLY BY PATCHING & SEALING ALL OPENINGS & PENETRATIONS AS REQUIRED BY CODE. PROVIDE A 3/4 HR. FIRE RESISTANT SUSPENDED CEILING IN BASEMENT. FLOOR ASSEMBLY TO BE CONSTRUCTED ACCORDING TO ULC DESIGN #L506. SEE REFLECTED CEILING PLAN DWG.

- CARPET PATCRAFT COLLECTION 10086-86519 ANTHOLOGY
- OLYMPIA TILE - MONTANA SERIES UNGLAZED PORCELAIN 2\" x 2\" MOSAICS \"STERLING GREY\"
- 12\" x 12\" MANNINGTON COMMERCIAL VINYL COMPOSITE TILE, BRUSHWORK 713 FLORENTINE ACCENT TILE (WAITING 102 & LUNCHROOM 104) 12\" x 12\" MANNINGTON COMMERCIAL VINYL COMPOSITE TILE, BRUSHWORK 731 MARS BLACK
- 12\" x 12\" QUARRY TILE OLYMPIA TILE - PIZZARA SERIES PORCELAIN GREEN R22
- (INTERIOR STAIRS) JOHNSONITE RUBBER TREADS & RISERS W/ INTEGRATED RISER FOR VISUALLY IMPAIRED STANDARD SPECKLED COLOURWAYS 725 METEOR, HAMMERED TEXTURED TREADS, RISERS & FLOOR C/W CONTRAST COLOUR STRIP 49-BEIGE



FLOOR FINISH IS INCLUDED W/ LIFT

MAIN FLOOR PLAN - FLOOR FINISH PLAN SCALE: 1/8\"/>

ORIGINAL STAMPED BY: R.K.FOK LI Arch.
 DATE: 2007.11.15

SEE ADDENDUM 4 BID OPPORTUNITY 629-2007 MMK 2007.11.15
 REVISED FLOOR FINISH IN SHOWERS B-06 & B-10
 REVISED MAIN FLOOR SUB-FLOOR RENOVATION
 REVISED 3/4 HR. FIRE ASSEMBLY NOTE

NO.	REVISION/DESCRIPTION	BY	DATE
SEALS			

DRAWN BY	MMK	CHECKED BY	APPROVED
DATE	2007.10.05	USER APPROVAL	

CITY OF WINNIPEG
 PLANNING, PROPERTY & DEVELOPMENT DEPARTMENT
 CIVIC ACCOMMODATIONS DIVISION
 300 - 65 GARRY ST. R3C 4K4

PROJECT
 COMMUNITY POLICE SERVICE CENTRE

SHEET TITLE
 BASEMENT & MAIN FLOOR PLANS
 STAIRWAY FLOOR RENOVATION
 FLOOR FINISH PLANS

SCALE	PROJECT NO.	SHEET NO.
AS SHOWN	2004-023	A5R1