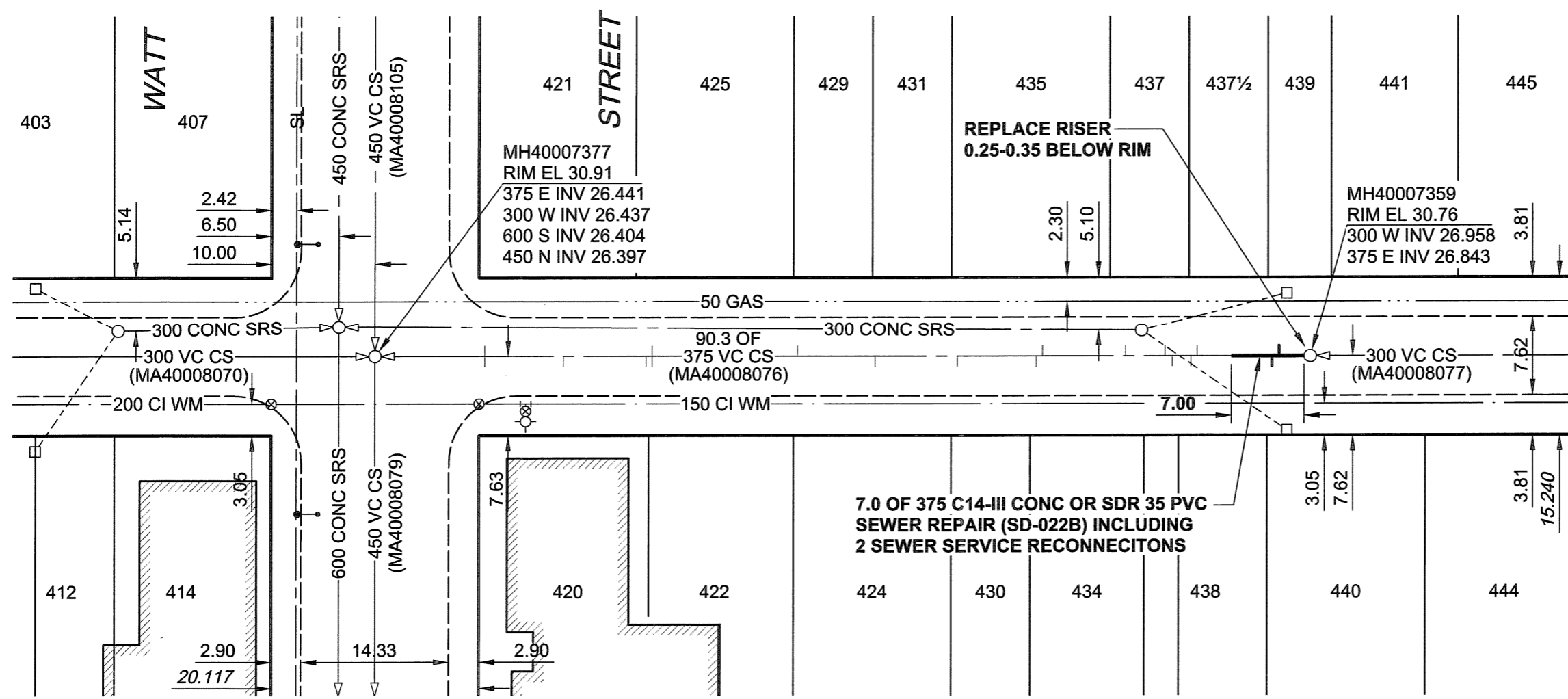


B SIZE 11" x 17" (279mm x 432mm)

PLOT: 07/09/04 9:10:13 AM

UMA AECOM REVIEW DRFT CHK
UMA FILE NAME: D265-217-03_01-C-1020_RX.dwg Saved By: wdenoude

TWEED AVENUE



SEWER JUNCTION INFORMATION

REF. MH*	DIST FROM*	SIZE*	CLOCK AT*
	REF. MH		
MH40007359	3.00	150Ø	02
MH40007359	3.70	150Ø	10
MH40007359	10.90	150Ø	02
MH40007359	11.50	150Ø	10
MH40007359	13.30	200Ø	11
MH40007359	14.00	200Ø	01
MH40007359	17.80	150Ø	02
MH40007359	25.80	150Ø	02
MH40007359	26.40	150Ø	10
MH40007359	34.00	150Ø	10
MH40007359	41.90	150Ø	10
MH40007359	49.40	150Ø	02
MH40007359	63.40	150Ø	02
MH40007359	63.40	150Ø	11
MH40007359	64.00	150Ø	10
MH40007359	72.00	150Ø	10
MH40007359	79.60	150Ø	02
MH40007359	79.60	150Ø	11

*JUNCTION LOCATION FROM VIDEO INSPECTION

WARNING

IF POWER EQUIPMENT OR EXPLOSIVES ARE TO BE USED FOR EXCAVATION ON THIS PROJECT, THE CONTRACTOR MUST:

- 1) NOTIFY THE GAS COMPANY OF THE PROPOSED LOCATION OF EXCAVATION.
- 2) TAKE PRECAUTION TO AVOID DAMAGE TO GAS COMPANY INSTALLATIONS. SEE PROVINCIAL REGULATION 140/92 FOR DETAILS

METRIC
WHOLE NUMBERS INDICATE MILLIMETRES
DECIMALIZED NUMBERS INDICATE METRES

APEGN
Certificate of Authorization
UMA Engineering Ltd. (MB)
No. 256 Date: 07/09/04

CONSTRUCTION NOTES:
1. ALL SEWER AND WATER SERVICES WITHIN THE REPAIR LIMITS TO BE LOCATED IN THE FIELD BY THE CONTRACTOR

BID OPPORTUNITY NO. 573-2007

LOCATION APPROVED UNDERGROUND STRUCTURES

BM 27-038 S.W. Cor. Watt St. & Thames Ave., Tblt. on top of 0.05m dia. x 2.4m iron pipe, beneath Valve Box (marked "W") 2m E. of W.L. of Watt St. & on S.L. of Thames Ave.
ELEV 230.988m

NO.	REVISIONS	YY/MM/DD	BY
1	ISSUED FOR ADDENDUM	07/08/31	WJd
0	ISSUED FOR CONSTRUCTION	07/08/21	KMB

NOTE: LOCATION OF UNDERGROUND STRUCTURES AS SHOWN ARE BASED ON THE BEST INFORMATION AVAILABLE. BUT NO GUARANTEE IS GIVEN THAT ALL EXISTING UTILITIES ARE SHOWN OR THAT THE GIVEN LOCATIONS ARE EXACT. CONFIRMATION OF EXISTENCE AND EXACT LOCATION OF ALL SERVICES MUST BE OBTAINED FROM THE INDIVIDUAL UTILITIES BEFORE PROCEEDING WITH CONSTRUCTION.

UMA | AECOM

© 2006 UMA ENGINEERING LTD. ALL RIGHTS RESERVED.

DESIGNED BY	MJR	CHECKED BY	A. Delann
DRAWN BY	KMB	APPROVED BY	Bryan Lebebe
HOR. SCALE	1:500	RELEASED FOR CONSTRUCTION	
VERT. SCALE		DATE	07/09/04

PROFESSIONAL'S SEAL

PROVINCE OF MANITOBA
C. C. MACEY
REGISTERED ENGINEER

CONSULTANT DRAWING NO. 20
D265-217-03

THE CITY OF WINNIPEG
WATER AND WASTE DEPARTMENT

2007 COMBINED SEWER RENEWALS
BY EXTERNAL POINT REPAIRS AND REPLACEMENTS
CONTRACT 15

TWEED AVENUE
WATT STREET
TO 152m W OF ELMWOOD ROAD

SHEET 20 OF 29
CITY DRAWING NUMBER
06148
REV 1