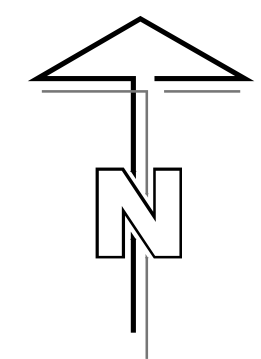
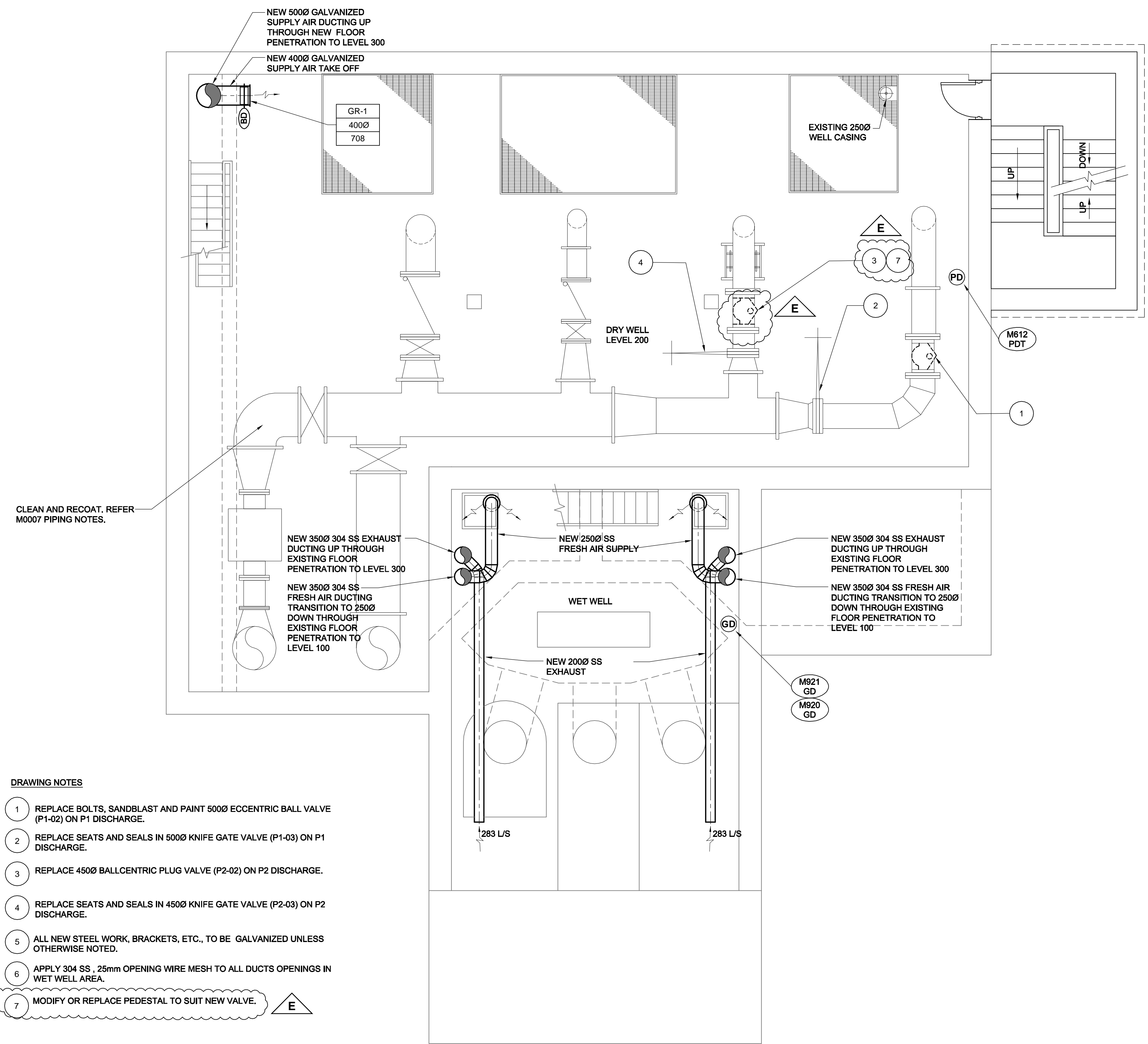


D:\SIZE 22 X 34 (550MM X 864MM)

PLOT: 24/01/2008 4:37:50 PM

UMA FILE NAME: D265-202-02_01-M-0008_RX.dwg Saved By: schween



DRAWING NOTES

- 1 REPLACE BOLTS, SANDBLAST AND PAINT 5000 ECCENTRIC BALL VALVE (P1-02) ON P1 DISCHARGE.
- 2 REPLACE SEATS AND SEALS IN 5000 KNIFE GATE VALVE (P1-03) ON P1 DISCHARGE.
- 3 REPLACE 4500 BALLCENTRIC PLUG VALVE (P2-02) ON P2 DISCHARGE.
- 4 REPLACE SEATS AND SEALS IN 4500 KNIFE GATE VALVE (P2-03) ON P2 DISCHARGE.
- 5 ALL NEW STEEL WORK, BRACKETS, ETC., TO BE GALVANIZED UNLESS OTHERWISE NOTED.
- 6 APPLY 304 SS, 25mm OPENING WIRE MESH TO ALL DUCTS OPENINGS IN WET WELL AREA.
- 7 MODIFY OR REPLACE PEDESTAL TO SUIT NEW VALVE.

PLAN LEVEL 200 1
M0008

0 500 1000 1500 mm SCALE 1:50

NOTE:
ALL AREAS CLASS 1 GROUP D DIV 1 ELECT.
RATING INLESS OW NOTED

APEGM
Certificate of Authorization
UMA Engineering Ltd. (MB)
No. 256 Date: 08/01/24

RS	ALS	CC	CC	BP
DRN	CHK	DES	ENG	IDR
UMA REVIEW				

B.M. ELEV.	FIELD BOOK #:	UMA AECOM	
POSTED TO LBIS		DESIGNED BY: CAC	CHECKED BY: -----
		DRAWN BY: RJP	APPROVED BY: -
E ISSUED FOR ADDENDUM 3	08/01/23	RS	
D ISSUED FOR BID	07/12/14	RS	
C ISSUED FOR 100% REVIEW	07/11/09	RS	
B ISSUED FOR ZONING	07/08/21	ALS	
A ISSUED FOR 80% REVIEW	07/06/18	RJP	
NO. REVISIONS	DATE	BY	FILENAME: D265-202-02_01-M-0008_RX.dwg

ENGINEER'S SEAL
ISSUE / REVISION E
ISSUED FOR ADDENDUM 3
WAS SEALED BY
CLAUDE COURCHAINE
AND DATED
08/01/24

THE CITY OF WINNIPEG
WATER AND WASTE DEPARTMENT

PERIMETER ROAD PUMPING STATION UPGRADES
Contract B - Building Upgrades

Mechanical - New Construction
LEVEL 200 FLOOR PLAN

CITY DRAWING NUMBER	SHEET	REV.	SIZE
1-01111L-M0008	001	E	D