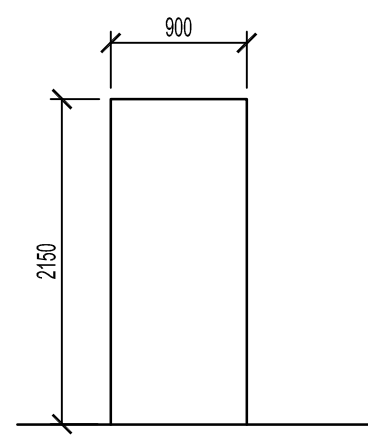
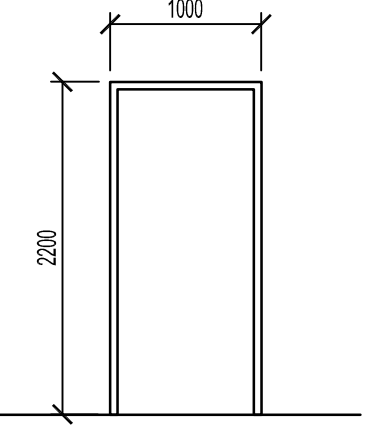


KEY PLAN  
SCALE: NTS

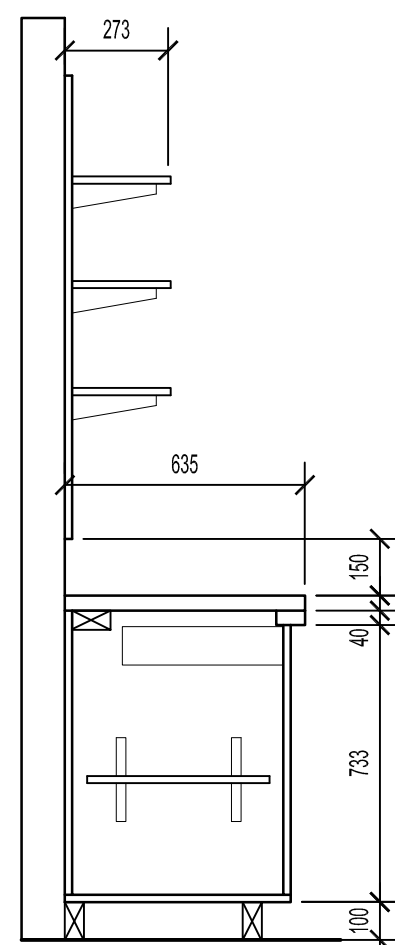
- DEMOLITION LEGEND
- ① RELOCATE & RE-USE EXISTING DOOR & DOOR FRAME
  - ② RELOCATE & RE-USE EXISTING WINDOW & WINDOW FRAME
  - DEMOLITION



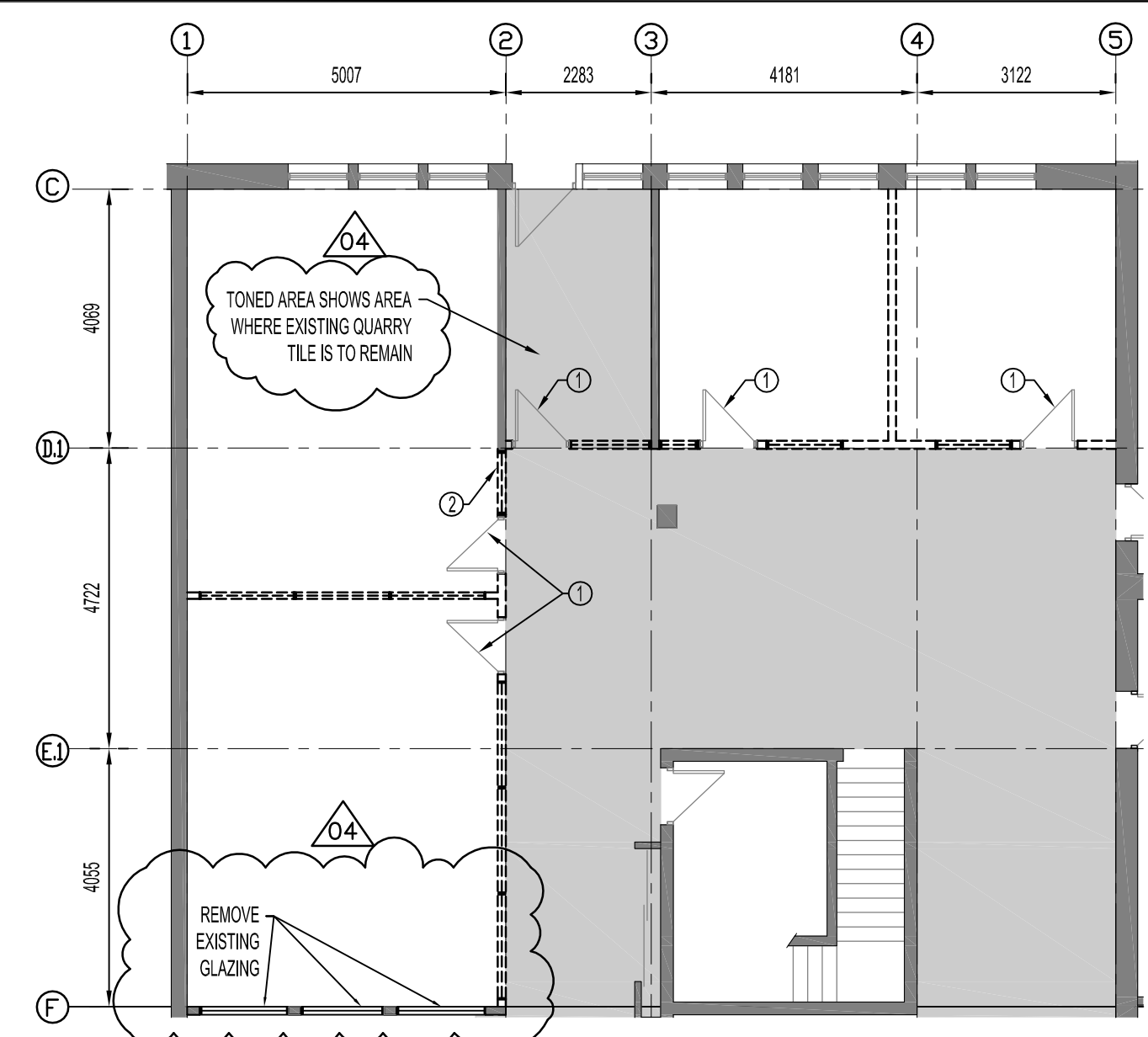
D1 HM DOOR  
HOLLOW CORE  
PAINT FINISH  
F1  
**DOOR TYPE**  
SCALE: 1:50



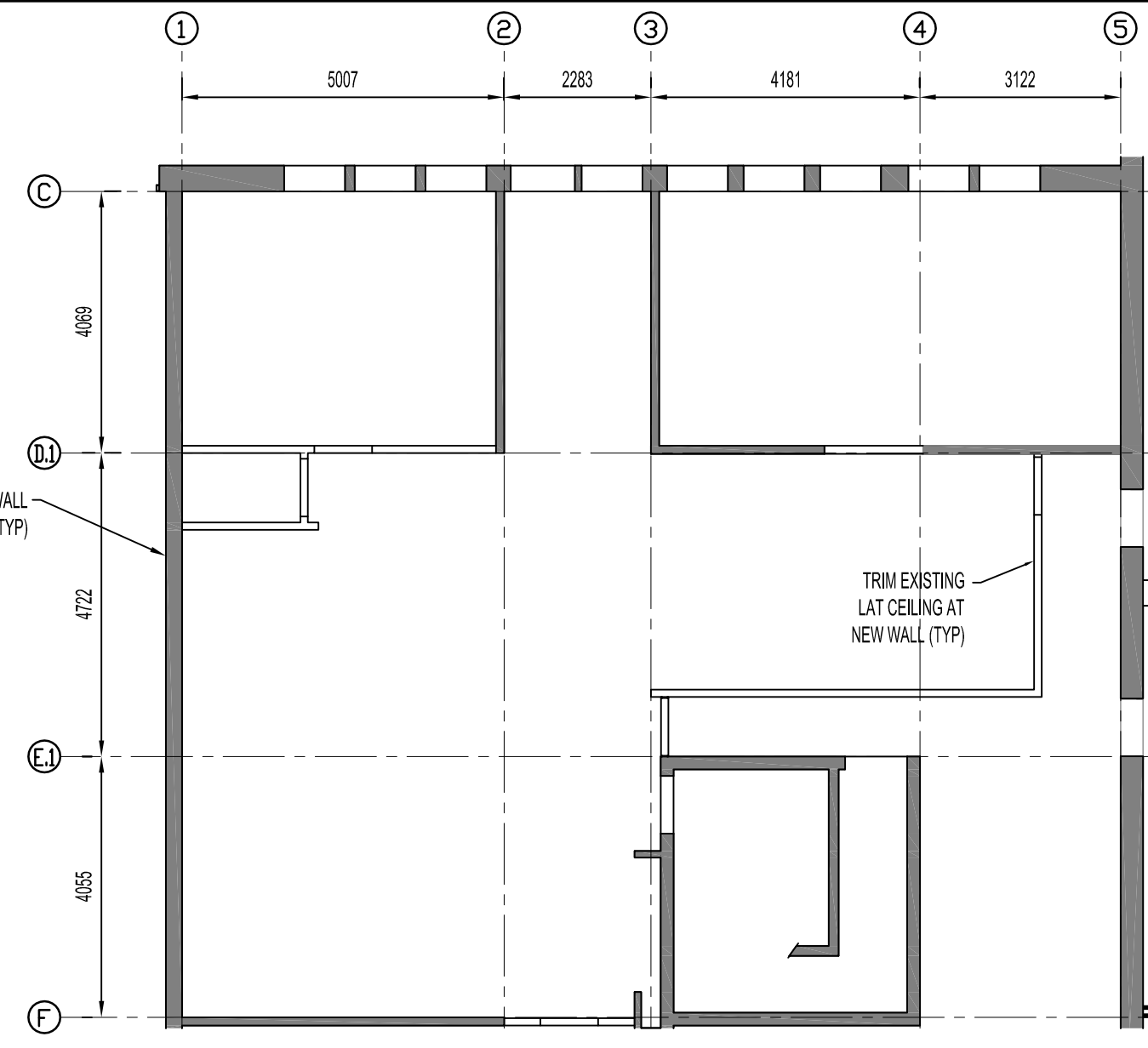
F1 HM FRAME  
KNOCK DOWN  
PAINT FINISH  
D1  
**FRAME TYPE**  
SCALE: 1:50



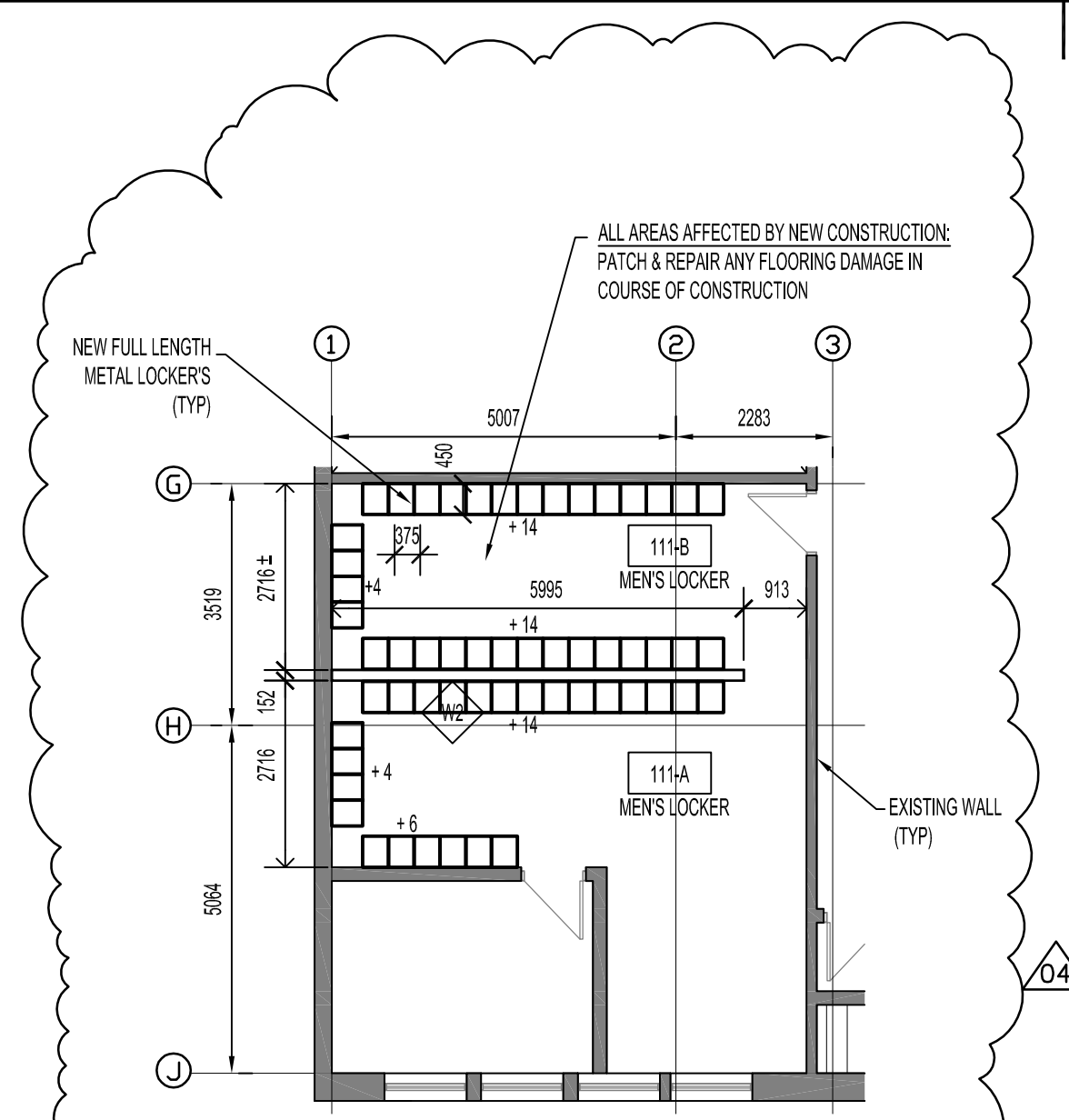
A SECTION  
SCALE: 1:20



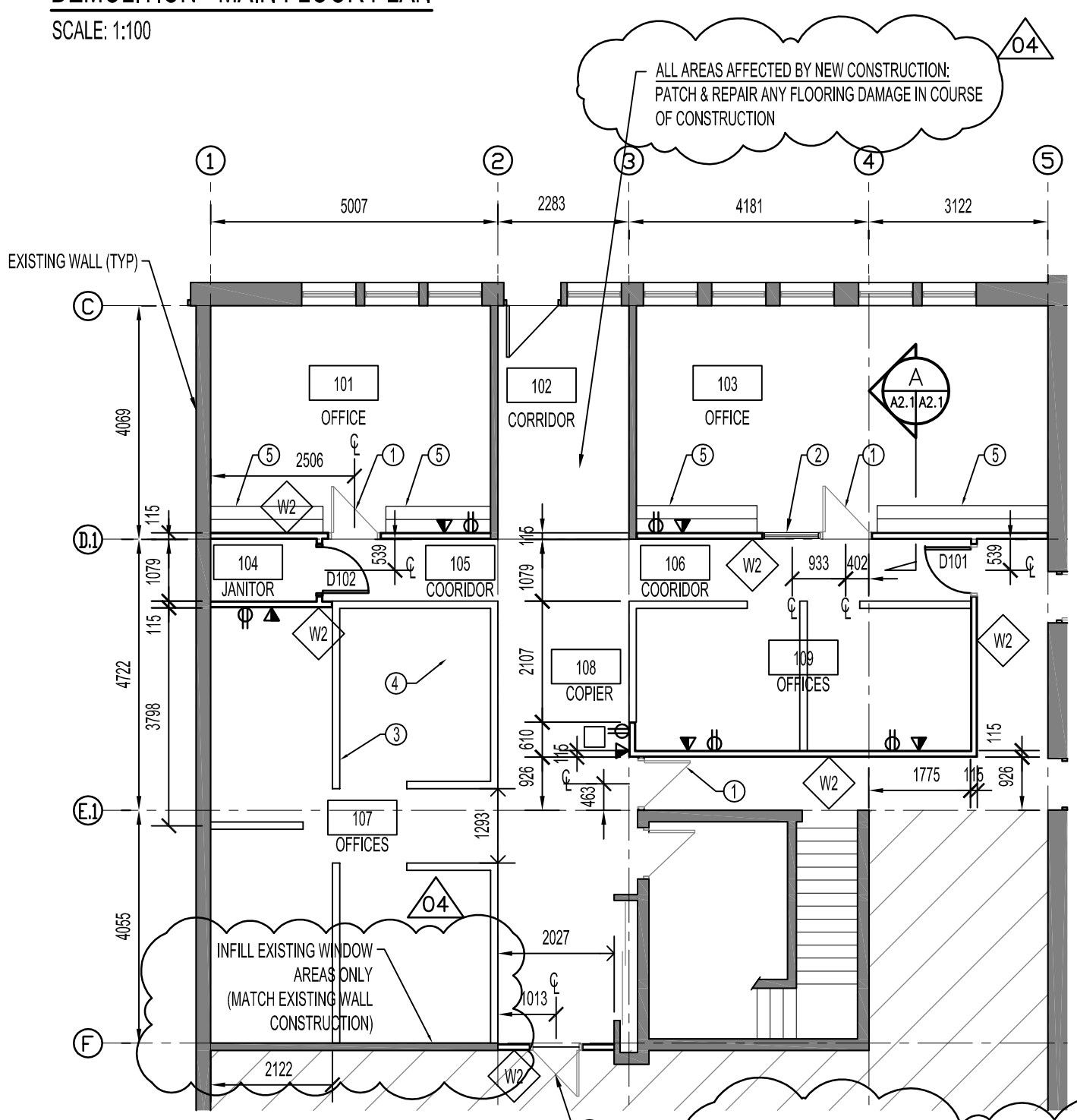
DEMOLITION - MAIN FLOOR PLAN  
SCALE: 1:100



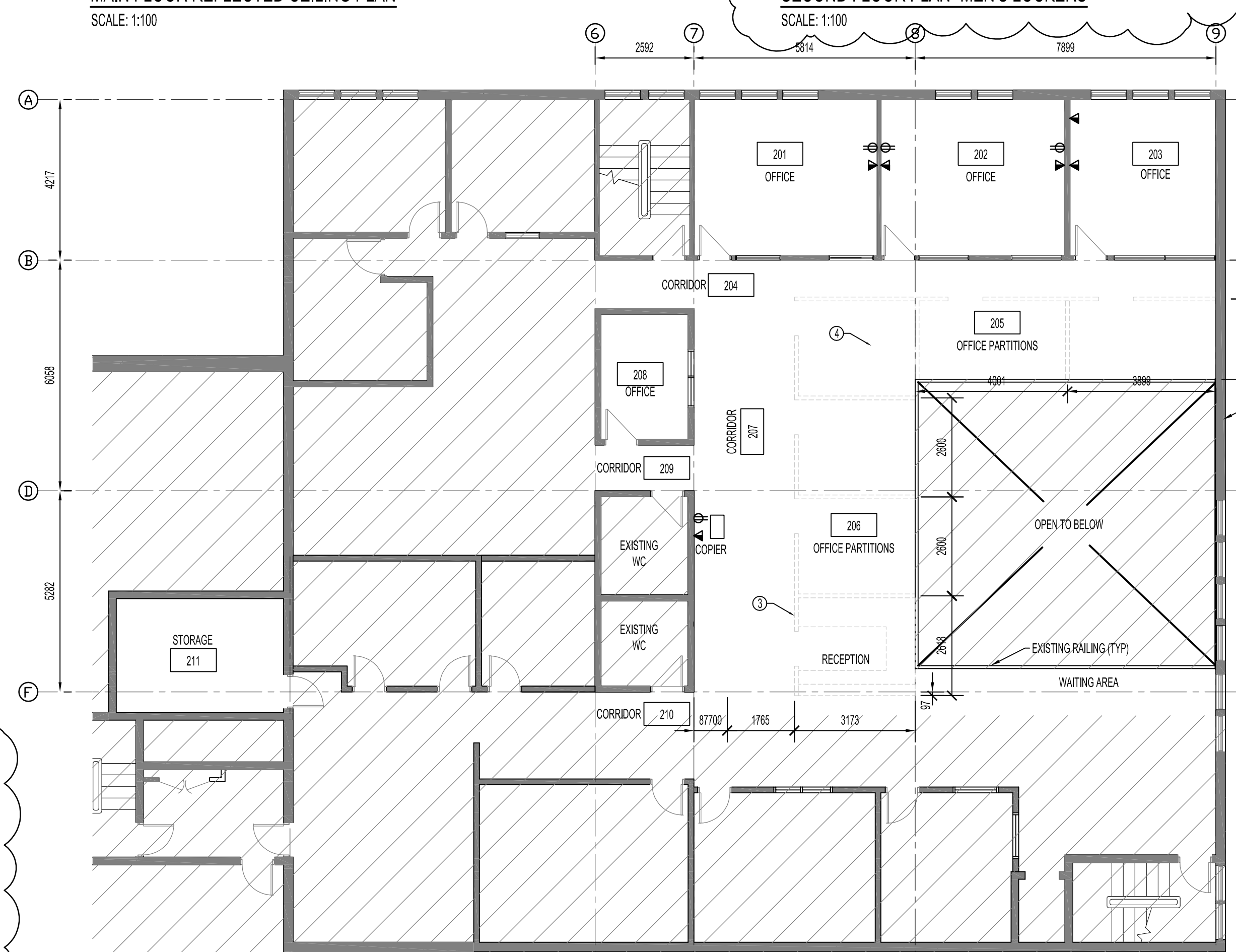
MAIN FLOOR REFLECTED CEILING PLAN  
SCALE: 1:100



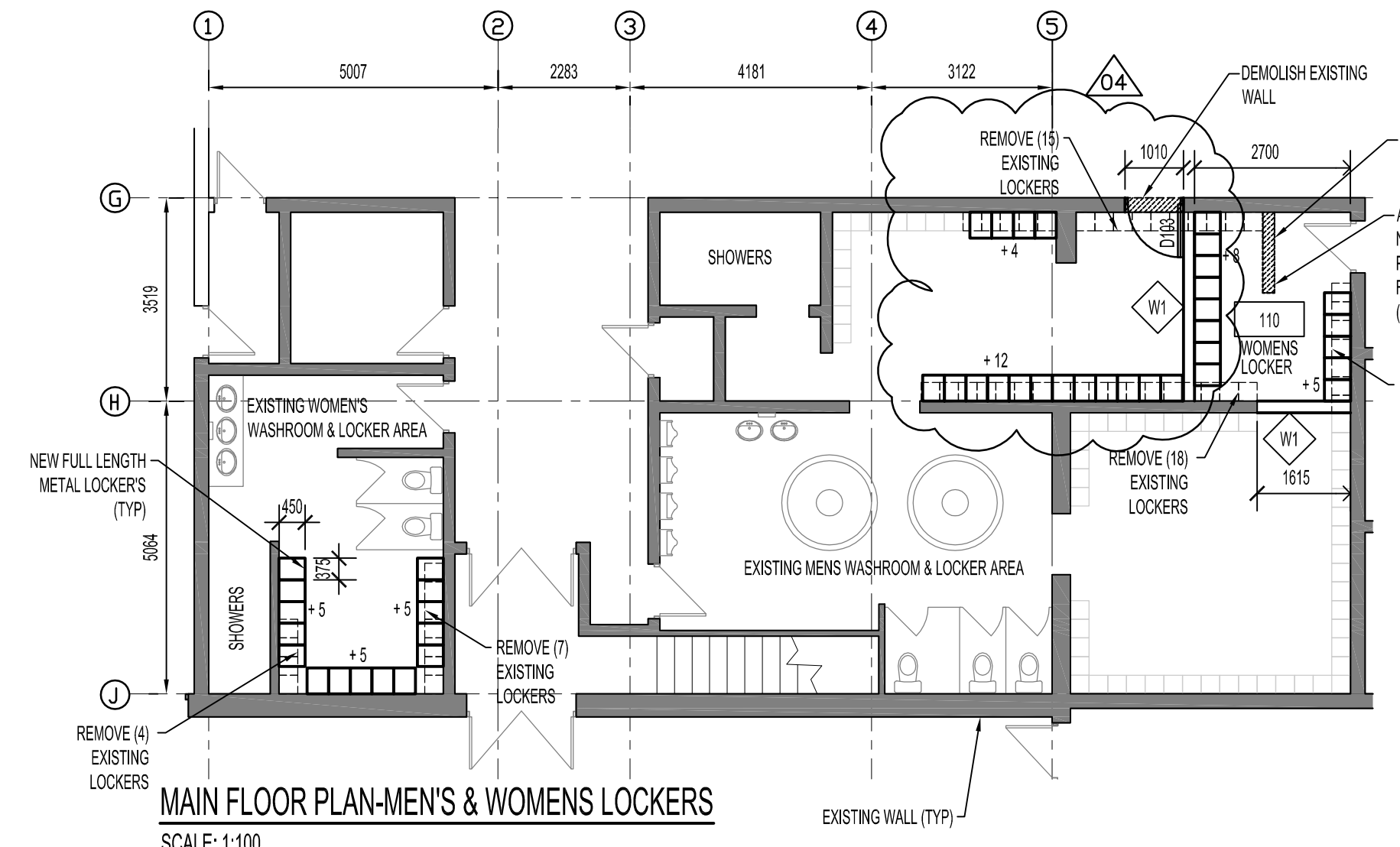
SECOND FLOOR PLAN - MEN'S LOCKERS  
SCALE: 1:100



MAIN FLOOR PLAN  
SCALE: 1:100



SECOND FLOOR PLAN  
SCALE: 1:100



MAIN FLOOR PLAN - MEN'S & WOMEN'S LOCKERS  
SCALE: 1:100

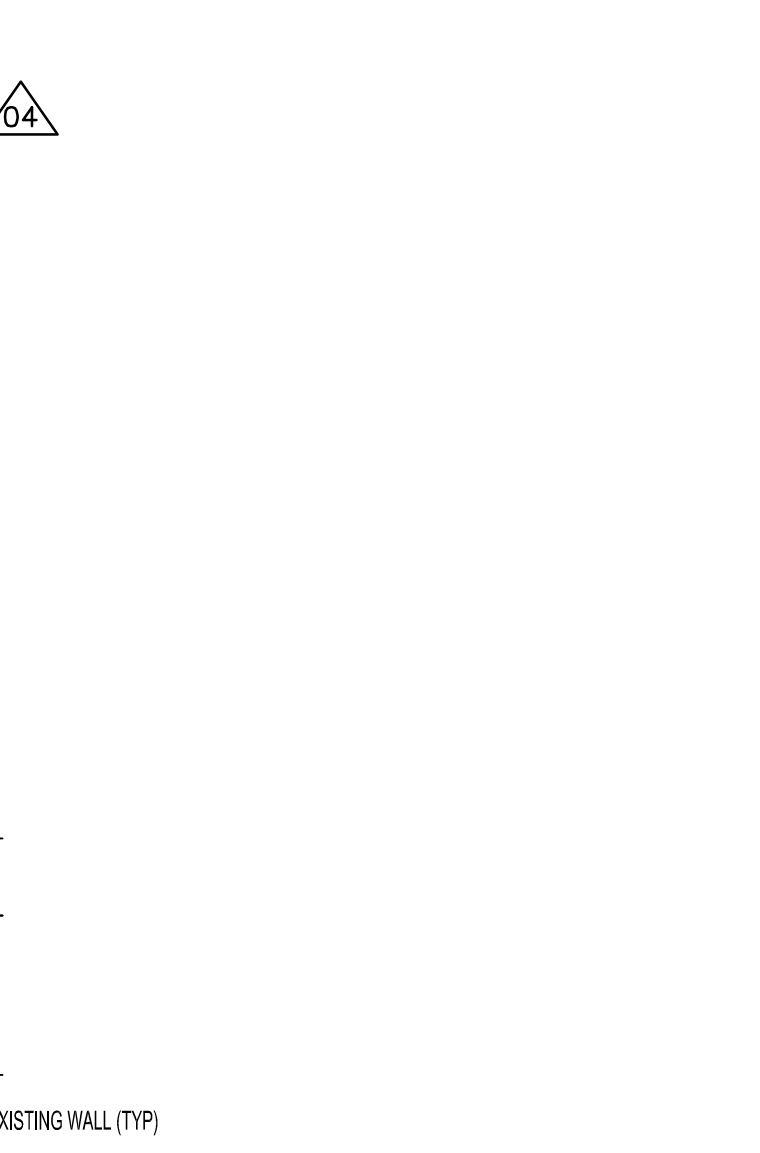
**LOCKERS**  
TOTAL LOCKER REQUIREMENT = 100 FULL SIZE LOCKER UNITS  
MEN'S LOCKERS:  
37 - NEW  
35 - EXISTING (RE-USED) FROM 401 PANDORA  
WOMEN'S LOCKERS:  
28 - NEW  
CONTRACTOR NOTE:  
35 FULL LENGTH LOCKERS ARE ALL EXISTING UNITS SUPPLIED BY THE CITY OF WINNIPEG. RELOCATION OF THE UNITS FROM 401 PANDORA WEST SHOP LOCKER AREAS IS TO BE PERFORMED BY THE CONTRACTOR IN THIS CONTRACT.

- LEGEND**
- SV SHEET VINYL
  - VCB VINYL COVE BASE (102 HIGH)
  - CONC CONCRETE
  - CSV COVERED SHEET VINYL (102 HIGH)
  - DW DRYWALL
  - LAT LAYAN ACOUSTIC TILE
  - PT PAINTED
  - HM HOLLOW METAL
  - PARTN PARTITIONS
  - HC HOLLOW CORE
  - GL GLAZING
- DRAWING NOTES:**
- ① RE-INSTALL (EXISTING) DOOR & DOOR FRAME
  - ② RE-INSTALL (EXISTING) WINDOW & FRAME
  - ③ SYSTEMS PARTITIONS (TYP) (N.I.C.)
  - ④ WORK STATIONS (TYP) (N.I.C.)
  - ⑤ NEW COUNTER WITH SHELVING ABOVE (TYP)
  - ⑥ PATCH & REPAIR CEILING TO MATCH EXISTING CEILING TILE & FRAMING WHERE REQUIRED
  - ⑦ NEW LAY IN ACOUSTIC TILE TO MATCH EXISTING CEILING TILE

ROOM NO.	ROOM NAME	FINISH SCHEDULE												COMMENTS					
		FLOORING	BASE	NORTH WALLS			EAST WALLS			SOUTH WALLS			WEST WALLS			CEILING			
		MAT	COLOUR	MAT	COLOUR	MAT	FINISH	COLOUR	MAT	FINISH	COLOUR	MAT	FINISH	COLOUR	MAT	FINISH	COLOUR	HST AFF	
201	OFFICE	---	---	DW	PT	DW	PT	DW	PT	DW	PT	DW	PT	DW	PT	---	---	---	EXIST LAT
202	OFFICE	---	---	DW	PT	DW	PT	DW	PT	DW	PT	DW	PT	DW	PT	---	---	---	EXIST LAT
203	OFFICE	---	---	DW	PT	DW	PT	DW	PT	DW	PT	DW	PT	DW	PT	---	---	---	EXIST LAT
204	CORRIDOR	---	---	DW	PT	DW	PT	DW	PT	DW	PT	DW	PT	DW	PT	---	---	---	EXIST LAT
205	OFFICES (PARTITIONS)	---	---	PARTN	---	DW	PT	DW	PT	PARTN	---	DW	PT	DW	PT	---	---	---	EXIST LAT
206	OFFICES (PARTITIONS)	---	---	PARTN	---	DW	PT	DW	PT	PARTN	---	DW	PT	DW	PT	---	---	---	EXIST LAT
207	CORRIDOR	---	---	DW	PT	DW	PT	DW	PT	DW	PT	DW	PT	DW	PT	---	---	---	EXIST LAT
208	OFFICE	---	---	DW	PT	DW	PT	DW	PT	DW	PT	DW	PT	DW	PT	---	---	---	EXIST LAT
209	CORRIDOR	---	---	DW	PT	DW	PT	DW	PT	DW	PT	DW	PT	DW	PT	---	---	---	EXIST LAT
210	CORRIDOR	---	---	DW	PT	DW	PT	DW	PT	DW	PT	DW	PT	DW	PT	---	---	---	EXIST LAT
211	STORAGE	---	---	DW	PT	DW	PT	DW	PT	DW	PT	DW	PT	DW	PT	---	---	---	EXIST LAT
212A	MEN'S LOCKER	---	VCB	DW	PT	DW	PT	DW	PT	DW	PT	DW	PT	DW	PT	---	---	---	EXIST LAT
212B	MEN'S LOCKER	---	VCB	DW	PT	DW	PT	DW	PT	DW	PT	DW	PT	DW	PT	---	---	---	EXIST LAT

HARDWARE GROUP SCHEDULE	
GROUP 1	- (3) HINGES - LOCKSET
GROUP 2	- (3) HINGES - LOCKSET - 45 MINUTE FIRE RATED
GROUP 3	- (3) HINGES - PUSH-PULL HANDSET - KICK PLATE
WALL SCHEDULE	<ul style="list-style-type: none"> <li>W1 - 190 x 300 MASONRY BLOCK</li> <li>W2 - 13mm GYPSUM BOARD</li> <li>W3 - 8mm STEEL STUD @ 400mm O.C</li> <li>W4 - 13mm GYPSUM BOARD</li> </ul>
NOT INCLUDED IN CONTRACT:	
AREAS NOT INCLUDED IN CONTRACT	
GENERAL NOTES:	
- ALL EXISTING DOORS TO BE RE-KEYED	
- ALL EXISTING DOORS TO BE PAINTED	
- STEAM CLEAN ALL EXISTING CARPETS	

**NOTES:**  
THESE DRAWINGS SHALL NOT BE SCALED.  
THE CONTRACTOR SHALL VISIT THE SITE AND SATISFY HIMSELF ALL DIMENSIONS, DATUM, AND DETAILED INFORMATION SHOWN ARE CORRECT.  
THE CONTRACTOR IS TO REVIEW AND COORDINATE ALL ARCHITECTURAL, MECHANICAL, ELECTRICAL AND STRUCTURAL DRAWINGS FOR ADDITIONAL OPENINGS THROUGH FLOORS, WALLS, AND CEILINGS FOR DUCT, PIPE & ELECTRICAL RISERS AND ALL OPENINGS NOT SHOWN ON DRAWINGS.  
ALL OPENINGS THROUGH FIRE ASSEMBLIES ARE TO BE FIRE STOPPED AND SEALED WITH ULC APPROVED FIRE STOPPING TO MAINTAIN THE INTEGRITY OF THE FIRE SEPARATION, AND PROVIDE A SMOKE-TIGHT BARRIER.  
ALL PRODUCTS AND MATERIALS TO BE USED AND INSTALLED SHALL CONFORM WITH MANUFACTURER'S SPECIFICATIONS & APPLICABLE CODES.  
THE CONTRACTOR SHALL BE RESPONSIBLE TO PATCH AND MAKE GOOD ALL EXISTING CONSTRUCTION AFFECTED BY THE REMOVAL OF ALL ITEMS FORMING THE PART OF THE RENOVATION WORK.  
WHERE NEW FLOORING AND BASE IS TO BE INSTALLED IN EXISTING AREAS (REFER TO FLOOR PLAN AND ROOM SCHEDULE) THE EXISTING FLOORING SURFACE AND BASE MUST BE REMOVED, UNLESS OTHERWISE NOTED. ALL FLOOR SURFACES SHALL BE PREPARED IN ACCORDANCE TO MANUFACTURER'S RECOMMENDATIONS FOR INSTALLATION OF NEW FLOOR.  
WHERE PAINTING OF EXISTING WALLS IS INDICATED ON THE ROOM SCHEDULE, THESE WALLS MUST BE CLEANED OF ANY EXISTING WALL COVERING, PATCHED & PREPARED TO ACCEPT NEW MATERIAL, UNLESS OTHERWISE NOTED.



SEALS

NO.	REVISION/DESCRIPTION	BY	DATE

DRAWN BY: CAD CHECKED BY: USER APPROVAL APPROVED

DATE: 2007 Apr 12

**CITY OF WINNIPEG**  
PLANNING, PROPERTY & DEVELOPMENT DEPARTMENT  
CIVIC ACCOMMODATIONS DIVISION  
300 - 65 GARRY ST. R3C 4K4

PROJECT  
**CONSTRUCTION OF OFFICE/GARAGE RENOVATIONS & STORGE BUILDING AT 1539 WAVERLEY STREET**  
1539 Waverley Street, Winnipeg, MB

SHEET TITLE  
**OFFICE - MAIN FLOOR PLAN - DEMO & REFLECTED CEILING PLAN - MILLWORK & SCHEDULES**

SCALE: AS SHOWN PROJECT NO.: 06063 SHEET NO.: OFF - A2.1

DRAWING SHEET SIZE: A1 (841mm x 594mm) PLOT 1:1