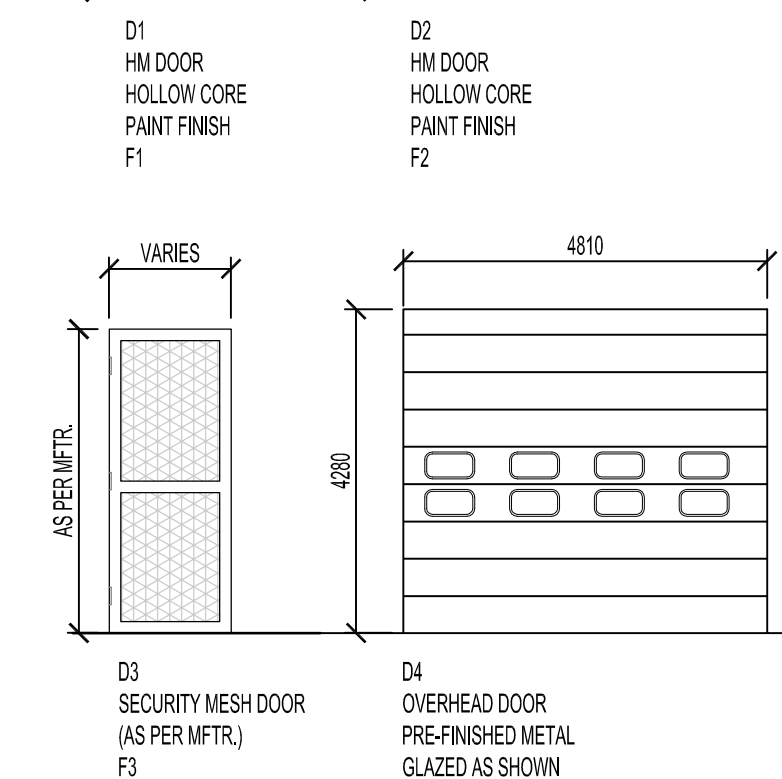
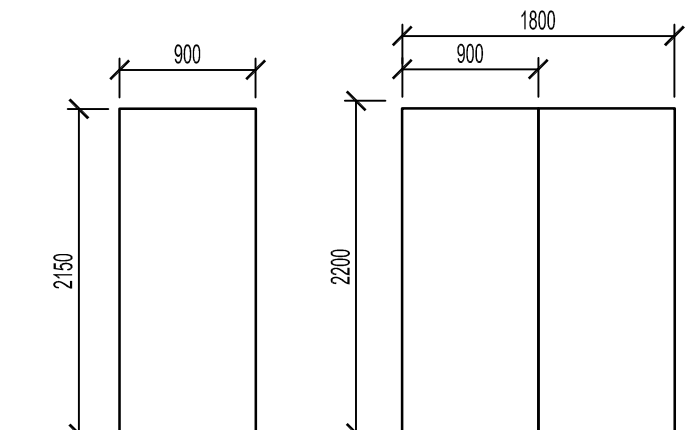
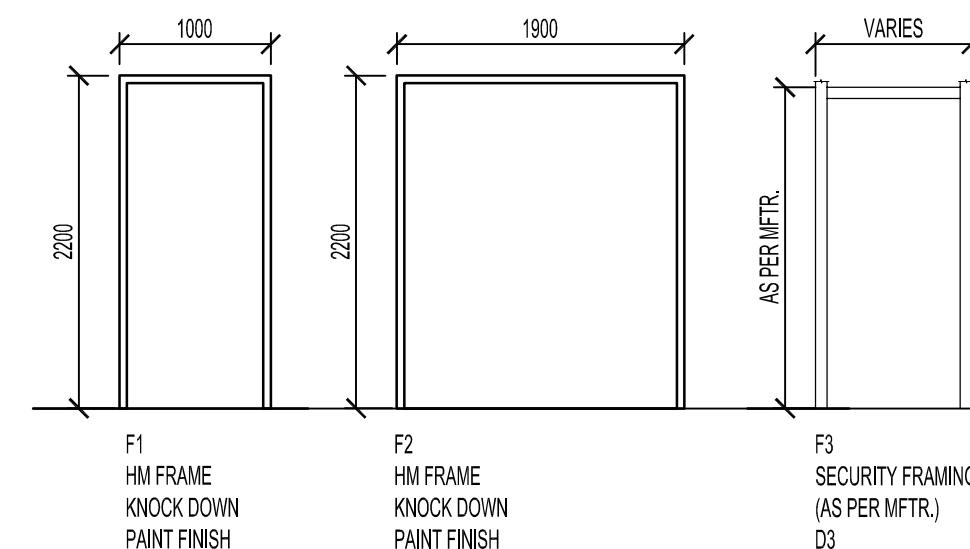


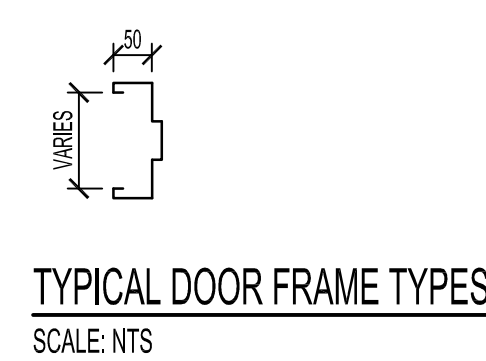
KEY PLAN  
SCALE: NTS



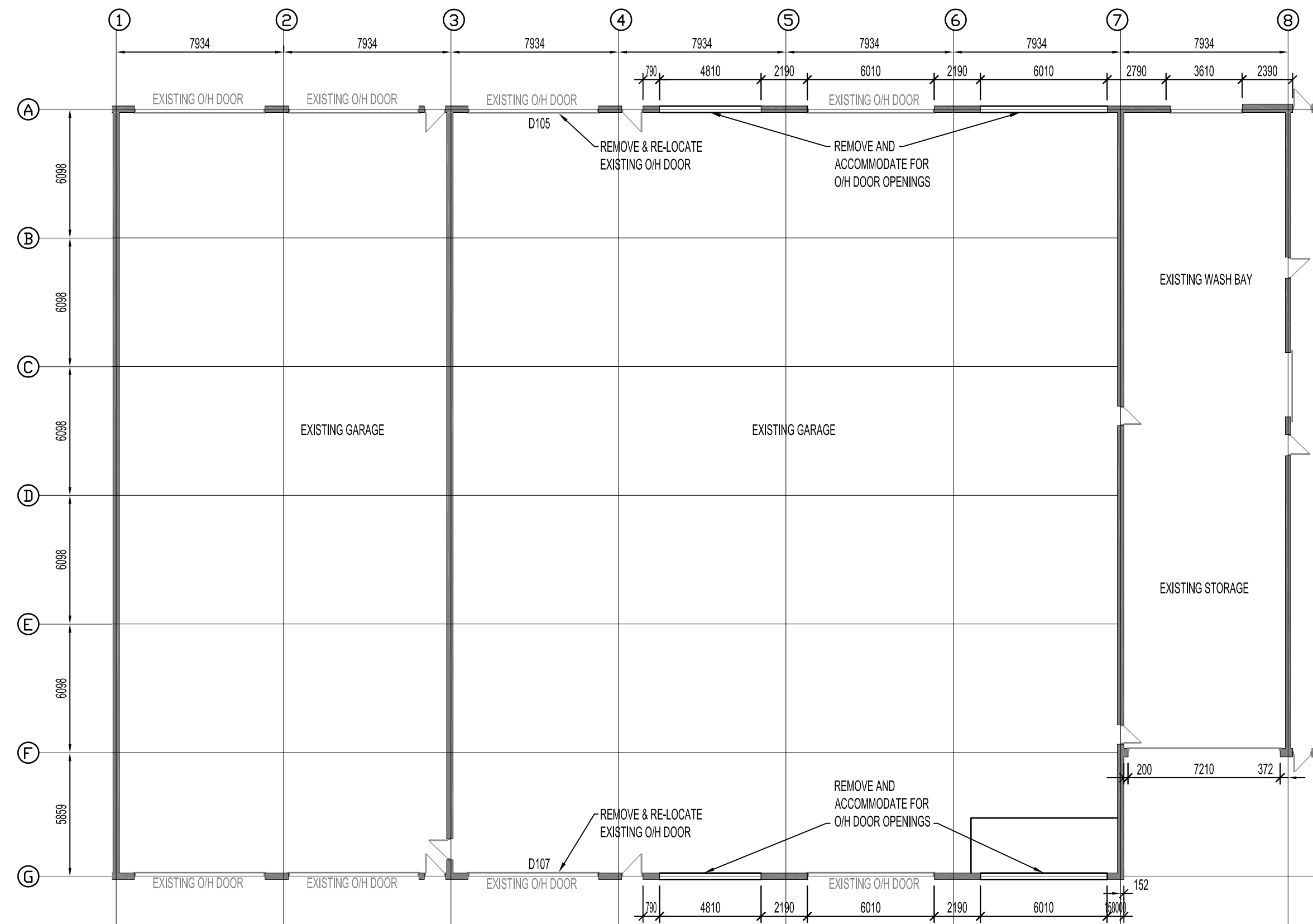
DOOR TYPES  
SCALE: NTS



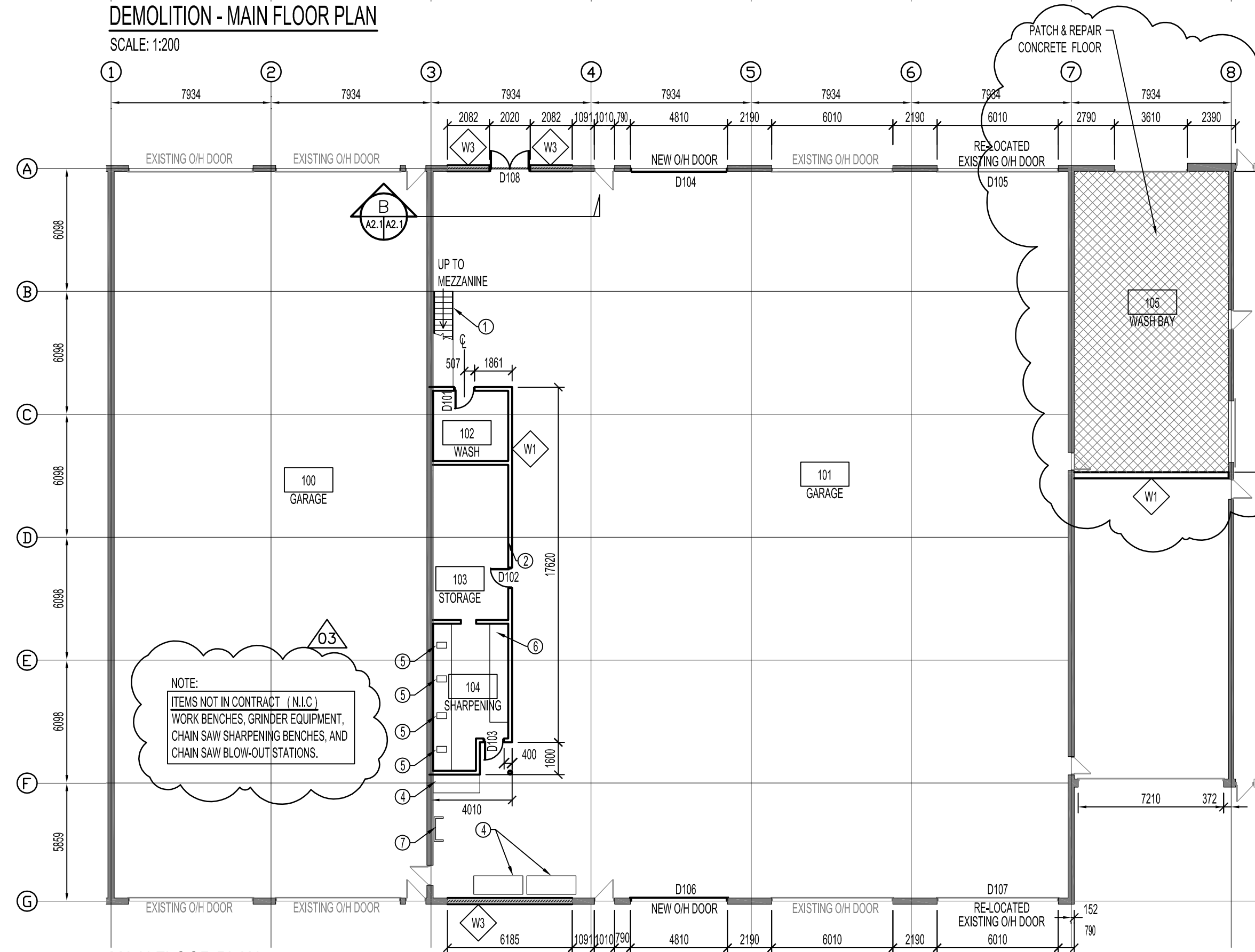
FRAME TYPES  
SCALE: NTS



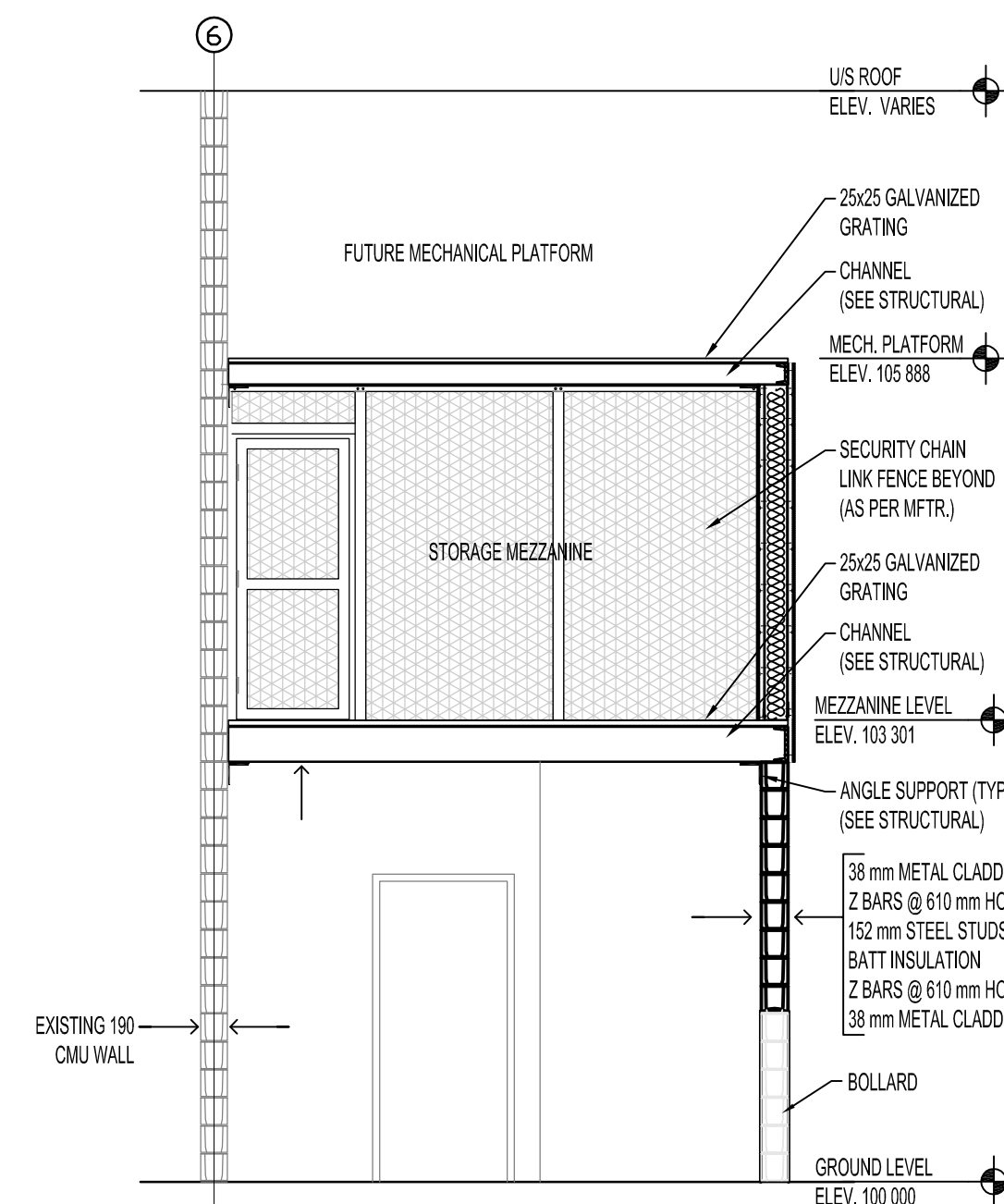
TYPICAL DOOR FRAME TYPES  
SCALE: NTS



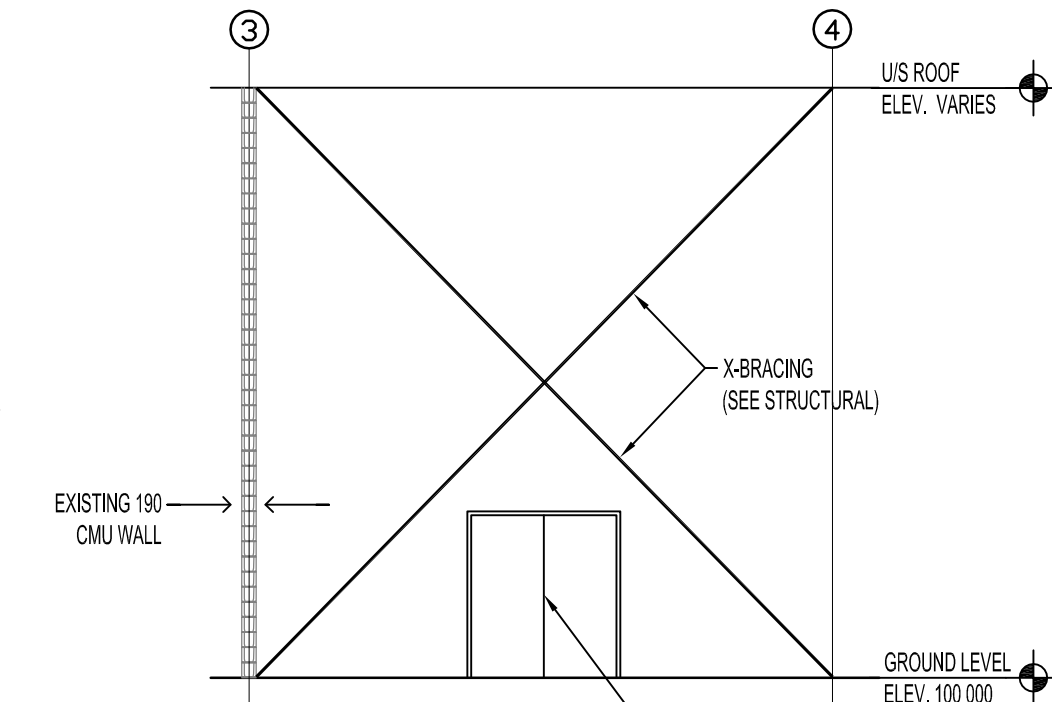
DEMOLITION - MAIN FLOOR PLAN  
SCALE: 1:200



MAIN FLOOR PLAN  
SCALE: 1:200



SECTION A  
SCALE: 1:50



SECTION B  
SCALE: 1:100

**LEGEND**

- SV SHEET VINYL
- EPXY EPOXY
- CONC CONCRETE
- CSV COVED SHEET VINYL (4" HIGH)
- DW DRYWALL
- LAT LAY AN ACOUSTIC TILE
- PT PAINTED
- HM HOLLOW METAL
- PFM PRE-FINISHED METAL
- ALUM ALUMINUM
- STL STEEL

**FINISHING NOTES**

- NEW STAIR TO MEZZANINE
- NEW STORAGE MEZZANINE ABOVE
- CHAIN LINK FENCE AS PER MFR.
- 2400 mm x 914 mm WORK BENCH (N.L.C.)
- GRINDER EQUIPMENT (N.L.C.)
- CHAIN SAW SHARPENING BENCHES (N.L.C.)
- CHAIN SAW BLOW-OUT STATION (N.L.C.)
- DEMOLITION

**FINISH SCHEDULE**

ROOM NO.	ROOM NAME	FLOOR		BASE		NORTH WALLS		SOUTH WALLS		WEST WALLS		CEILING		COMMENTS
		MAT	COLOUR	MAT	COLOUR	MAT	FINISH COLOUR	MAT	FINISH COLOUR	MAT	FINISH COLOUR	MAT	FINISH COLOUR	
100	GARAGE	CONC	-	CONC	PT	CONC	PT	CONC	PT	CONC	PT	-	-	EXISTING
101	GARAGE	CONC	-	CONC	PT	CONC	PT	CONC	PT	CONC	PT	-	-	EXISTING
102	WASH	CONC	-	CONC	PT	CONC	PT	CONC	PT	CONC	PT	-	-	EXISTING
103	STORAGE	CONC	-	CONC	PT	CONC	PT	CONC	PT	CONC	PT	-	-	US DECK
104	SHARPENING	CONC	-	CONC	PT	CONC	PT	CONC	PT	CONC	PT	-	-	US DECK
105	WASH BAY	CONC	EPXY	CONC	EPXY	CONC	EPXY	CONC	EPXY	CONC	EPXY	-	-	EXISTING

**DOOR SCHEDULE**

DOOR NO.	TO ROOM	SIZE	SWING	TYPE	MAT	CORE	FINISH COLOUR	PROFILE	MAT	TYPE	FINISH COLOUR	H/W	FIRE RATING	GRILLES	COMMENTS
D100	WASH	50x60x2150	LH	D1	HM	-	PT	-	HM	-	PT	-	1	-	-
D102	STORAGE	50x60x2150	RH	D1	HM	-	PT	-	HM	-	PT	-	1	-	-
D103	SHARPENING	50x60x2150	RH	D1	HM	-	PT	-	HM	-	PT	-	1	-	-
D104	GARAGE	4810 W x 4280 H x 102	-	D4	ALUM	-	PFM	-	STL	-	PT	-	-	-	GLAZING AS SHOWN
D105	GARAGE	EXISTING OH DOOR	-	-	-	-	-	-	-	-	-	-	-	-	RELOCATED OH DOOR
D106	GARAGE	4810 W x 4280 H x 102	-	D4	ALUM	-	PFM	-	STL	-	PT	-	-	-	GLAZING AS SHOWN
D107	GARAGE	EXISTING OH DOOR	-	-	-	-	-	-	-	-	-	-	-	-	RELOCATED OH DOOR
D108	GARAGE	(2) 50x60x2150	LH/RH	D2	HM	-	PT	-	HM	-	PT	-	1	-	-
D109	MEZZANINE STORAGE	50x60x2150	RH	D3	STL	-	-	-	STL	-	-	-	-	-	AS PER MFR.

**HARDWARE GROUP SCHEDULE**

GROUP 1 (GENERAL LATCHED)

- (-B) HINGES
- PASSAGE SET
- CLOSER

**WALL SCHEDULE**

WALL NO.	DESCRIPTION	DETAIL
W1	190 x 380 MASONRY BLOCK	[Detail]
W2	38 mm METAL CLADDING 2 BARS @ 610 mm HORIZ. 152 mm STEEL STUDS @ 400 O.C. BATT INSULATION 2 BARS @ 610 mm HORIZ. 38 mm METAL CLADDING	[Detail]
W3	38 mm METAL CLADDING 100 mm RIGID INSULATION 100 T.B. 2-BARS @ 610 mm HORIZ. AIR/VAPOUR BARRIER 16 TYPE X EXT. GIBB 152 mm STEEL STUDS @ 400 mm O.C. 38 mm PRE-FINISHED METAL LINER X-BRACING (SEE STRUCTURAL)	[Detail]

**NOTES :**

THESE DRAWINGS SHALL NOT BE SCALED.

THE CONTRACTOR SHALL VISIT THE SITE AND SATISFY ONESELF ALL DIMENSIONS, DATUM, AND DETAILED INFORMATION SHOWN ARE CORRECT.

THE CONTRACTOR IS TO REVIEW AND COORDINATE ALL ARCHITECTURAL, MECHANICAL, ELECTRICAL AND STRUCTURAL DRAWINGS FOR ADDITIONAL OPENINGS THROUGH FLOORS, WALLS, AND CEILINGS FOR DUCT, PIPE & ELECTRICAL RISERS AND ALL OPENINGS NOT SHOWN ON DRAWINGS.

ALL OPENINGS THROUGH FIRE ASSEMBLIES ARE TO BE FIRE STOPPED AND SEALED WITH ULC APPROVED FIRE STOPPING TO MAINTAIN THE INTEGRITY OF THE FIRE SEPARATION, AND PROVIDE A SMOKE-TIGHT BARRIER.

ALL PRODUCTS AND MATERIALS TO BE USED AND INSTALLED SHALL CONFORM WITH MANUFACTURER'S SPECIFICATIONS & APPLICABLE CODES.

THE CONTRACTOR SHALL BE RESPONSIBLE TO PATCH AND MAKE GOOD ALL EXISTING CONSTRUCTION AFFECTED BY THE REMOVAL OF ALL ITEMS FORMING THE PART OF THE RENOVATION WORK.

WHERE NEW FLOORING AND BASE IS TO BE INSTALLED IN EXISTING AREAS (REFER TO FLOOR PLAN AND ROOM SCHEDULE) THE EXISTING FLOORING SURFACE AND BASE MUST BE REMOVED, UNLESS OTHERWISE NOTED. ALL FLOOR SURFACES SHALL BE PREPARED IN ACCORDANCE TO MANUFACTURER'S RECOMMENDATIONS FOR INSTALLATION OF NEW FLOOR.

WHERE PAINTING OF EXISTING WALLS IS INDICATED ON THE ROOM SCHEDULE, THESE WALLS MUST BE CLEANED OF ANY EXISTING WALL COVERING, PATCHED & PREPARED TO ACCEPT NEW MATERIAL, UNLESS OTHERWISE NOTED.

**REVISIONS**

NO.	REVISION/DESCRIPTION	BY	DATE
03	ADDENDUM 1	DG	NOV 19/07
02	ISSUED FOR TENDER	DG	NOV 20/07
01	FINAL REVIEW	DG	OCT 16/07

**SEALS**

DRAWN BY	CAD	CHECKED BY	APPROVED
DATE	2007 Apr 12	USER APPROVAL	

**CITY OF WINNIPEG**  
PLANNING, PROPERTY & DEVELOPMENT DEPARTMENT  
CIVIC ACCOMMODATIONS DIVISION  
300 - 65 GARRY ST. R3C 4K4

**PROJECT**  
CONSTRUCTION OF OFFICE/GARAGE RENOVATIONS & STORAGE BUILDING AT 1539 WAVERLEY STREET

1539 Waverley Street, Winnipeg, MB

**SHEET TITLE**  
GARAGE - DEMOLITION - MAIN FLOOR PLAN - MAIN FLOOR PLAN & MEZZANINE - SECTIONS & SCHEDULES

**SCALE** AS SHOWN

**PROJECT NO.** 06063

**SHEET NO.** GAR - A2.1