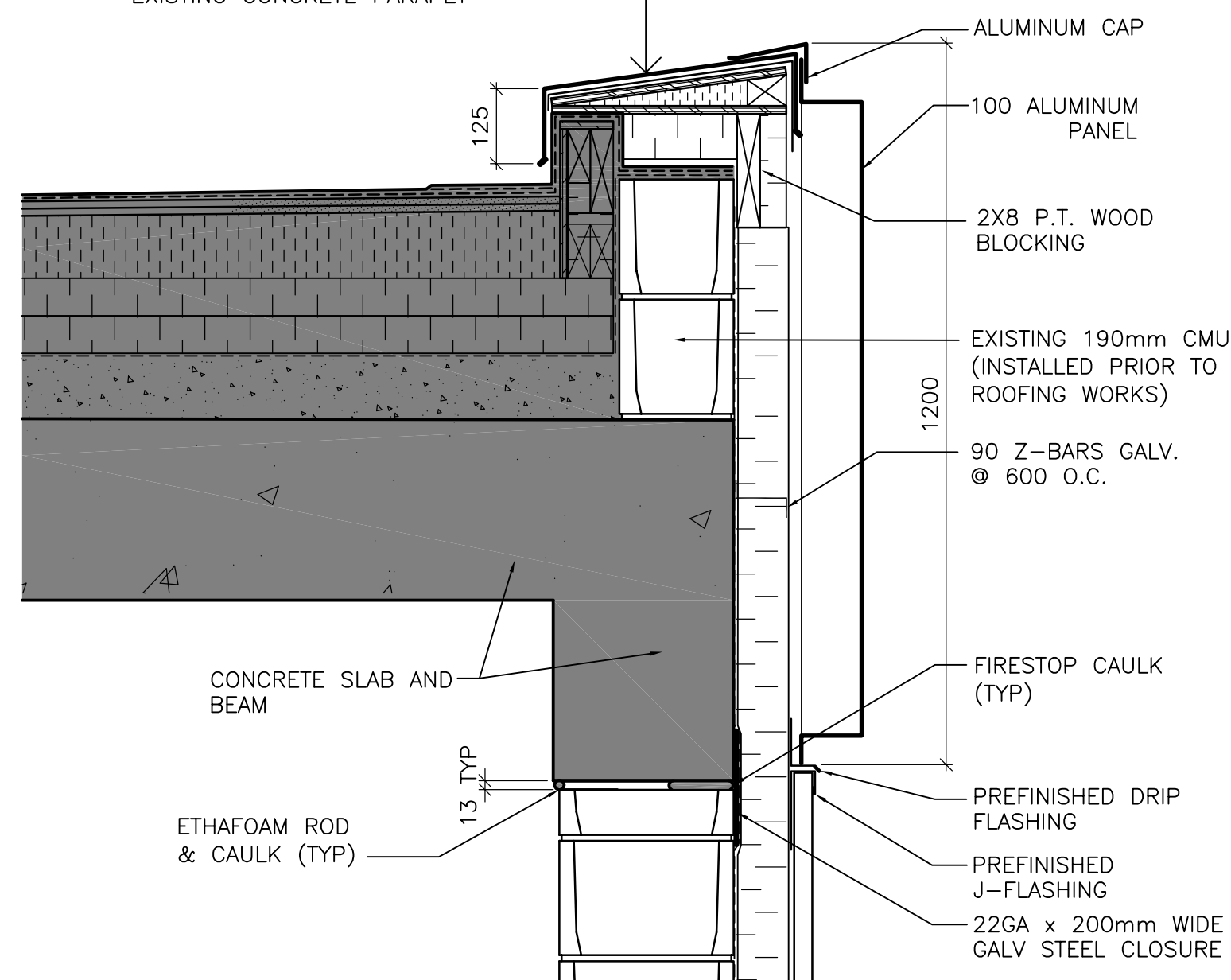
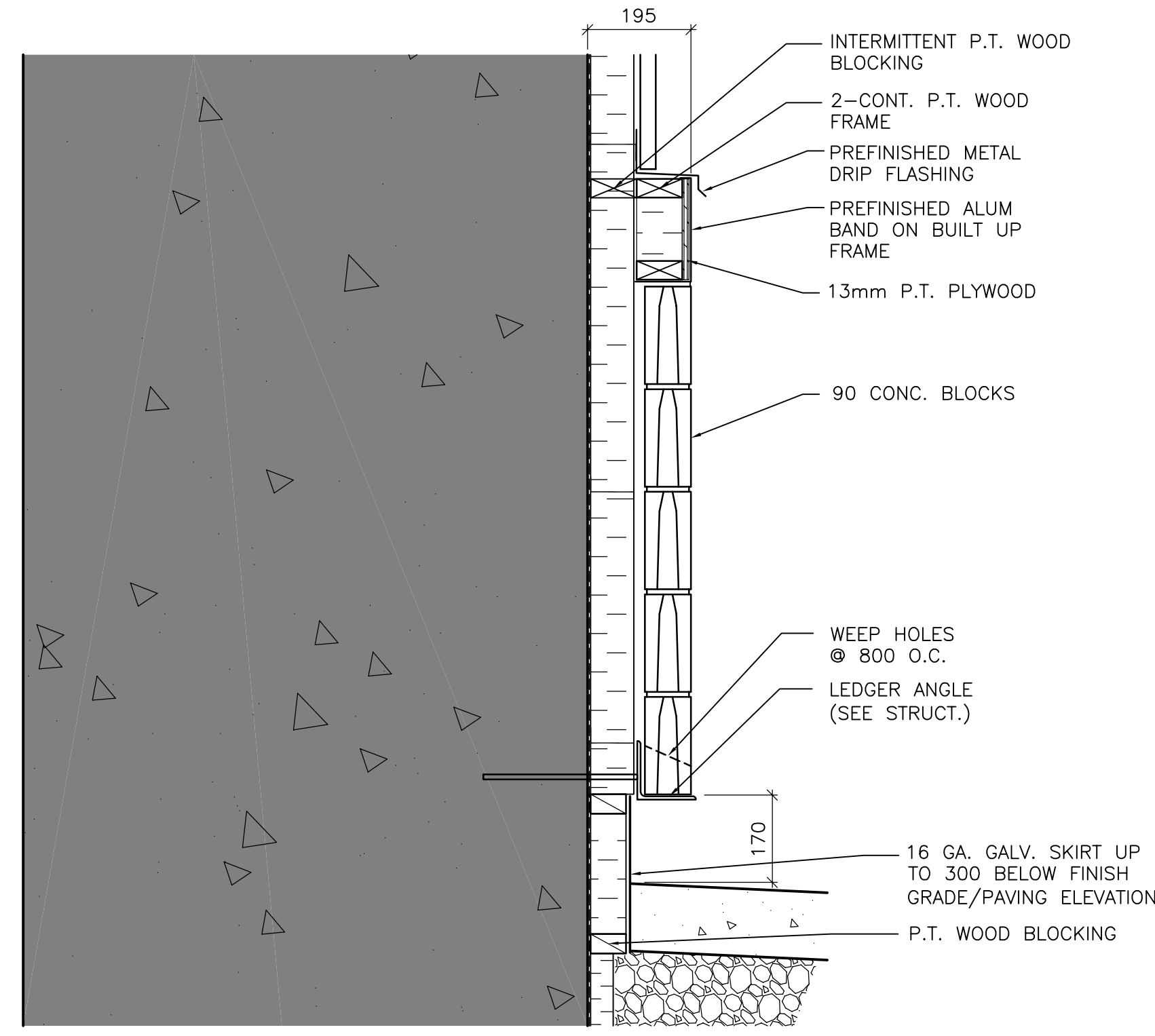


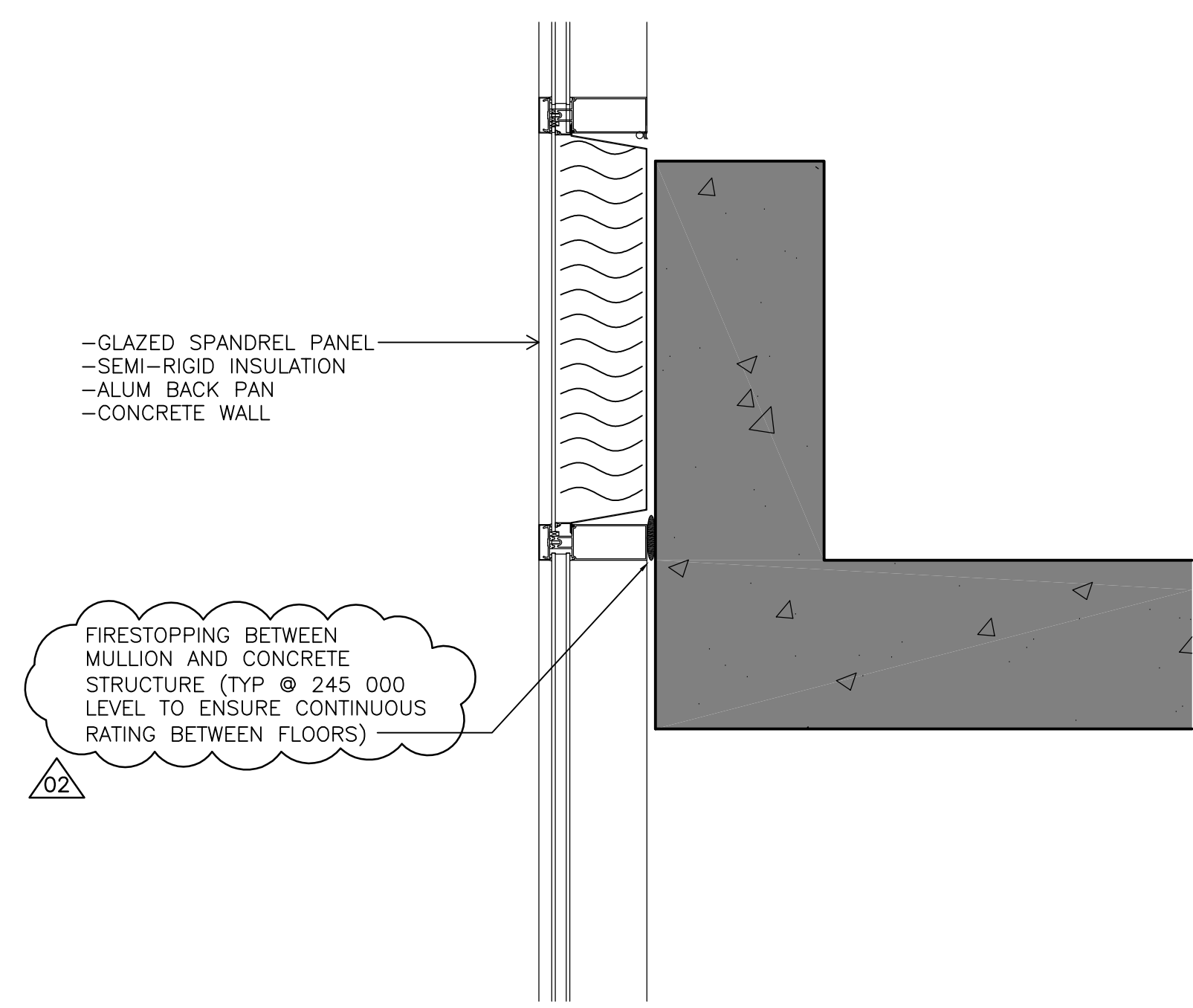
**TYPICAL PARAPET CONSTRUCTION**  
 - PREFIN ALUM CAP FLASHING  
 - ROOF BASE MEMBRANE  
 - 13 SLOPED PLYWOOD C/W BLOCKING  
 - 38-12 SLOPED EPS INSULATION  
 - 75 RIGID INSULATION  
 - 3 PLY AVB OVER EXIST MEMBRANES  
 - EXISTING CONCRETE PARAPET



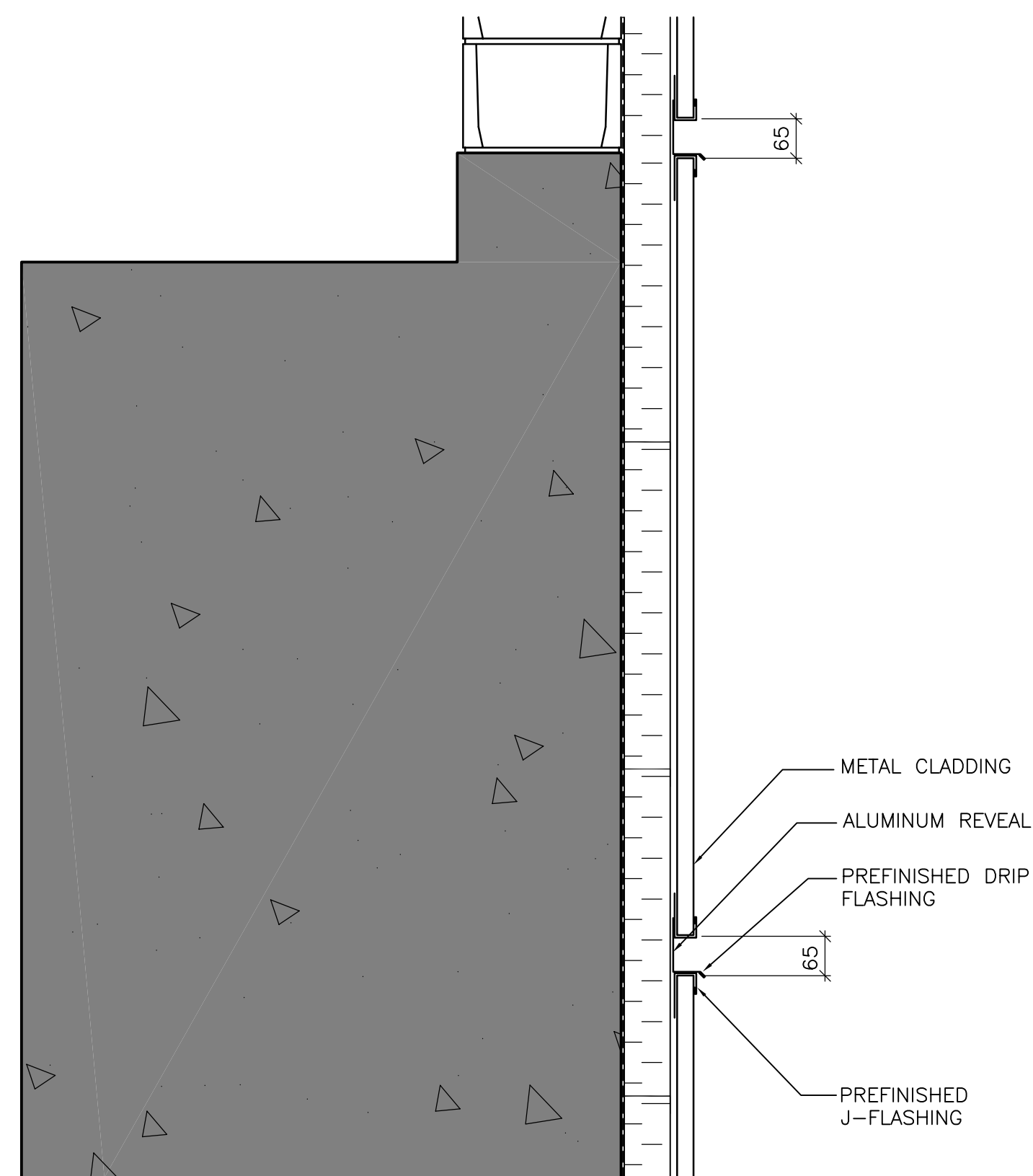
**A SECTION DETAIL**  
 WB-B0250 1 : 10



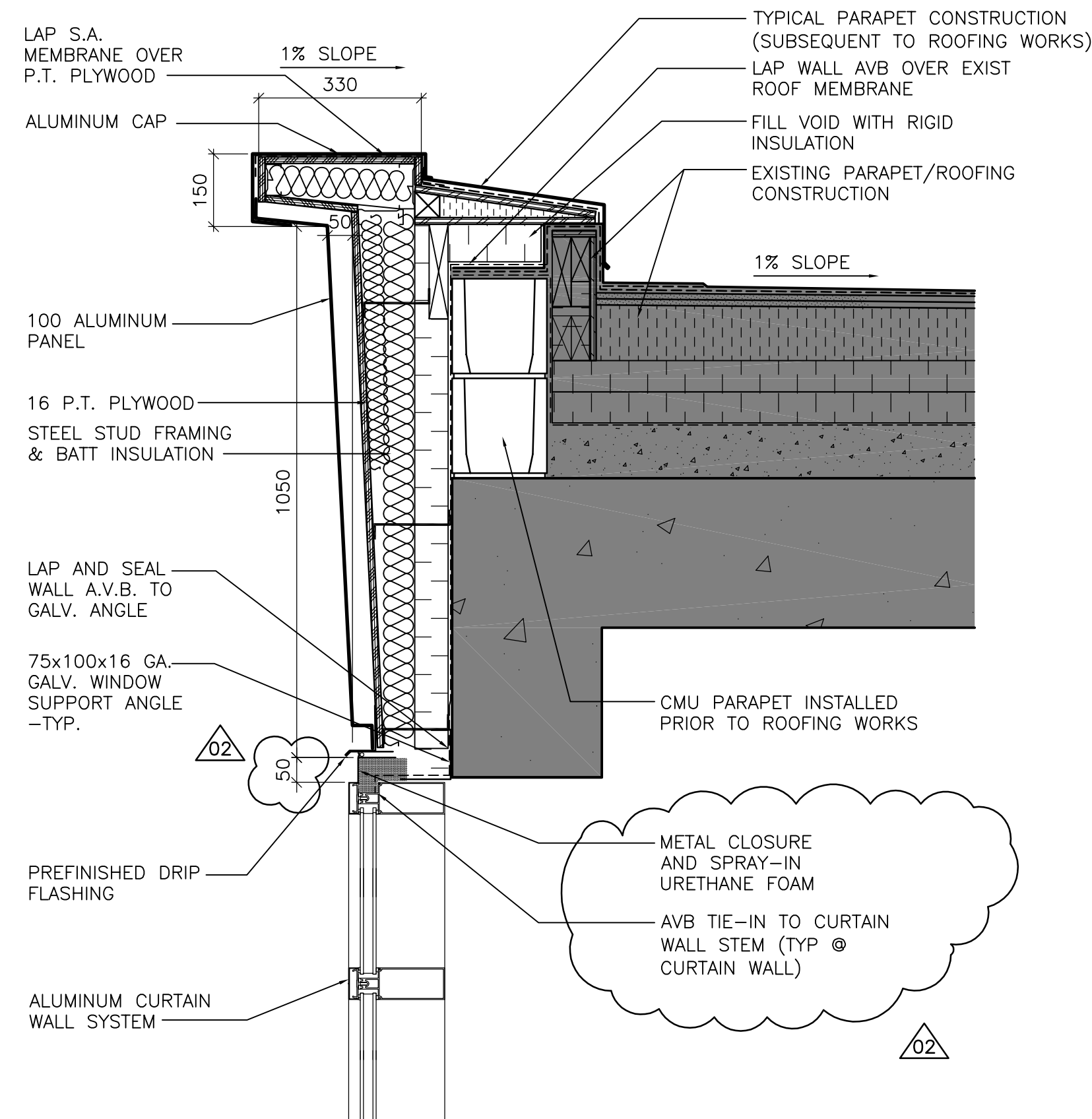
**C SECTION DETAIL**  
 WB-B0250 1 : 10



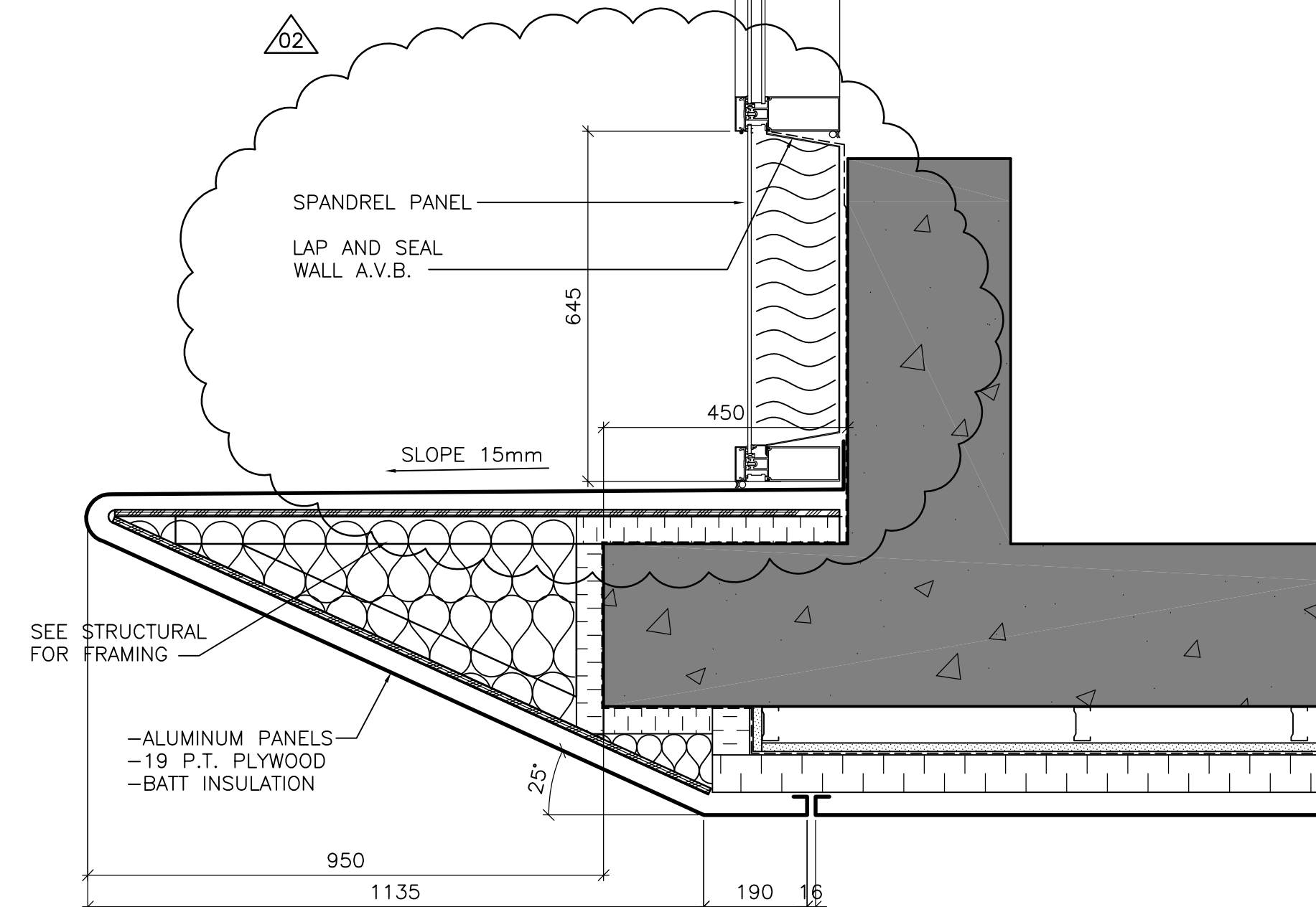
**E SECTION DETAIL**  
 WB-B0250 1 : 10



**B SECTION DETAIL**  
 WB-B0250 1 : 10



**D SECTION DETAIL**  
 WB-B0250 1 : 10



**F SECTION DETAIL**  
 WB-B0250 1 : 10



NO.	REVISIONS	DATE	BY	DATE	BY
02	793-2006 ADDENDUM 2	07/04/05	LK		
01	793-2006 ADDENDUM 1	07/03/29	LK		
00	ISSUED FOR TENDER	07/03/19	LK		

DESIGNED BY	NC	CHECKED BY	
DRAWN BY	IC/LK	APPROVED BY	AHL
SCALE:	AS NOTED	RELEASED FOR CONSTRUCTION BY:	R. SOROKOWSKI
DATE	2005/11/28	DATE	2007/03/19

ENGINEER'S SEAL	
ORIGINAL SIGNED BY	NEIL COOPER
	2007/03/19
CONSULTANT DRAWING NO.	WB-B0404

**THE CITY OF WINNIPEG**  
 WATER AND WASTE DEPARTMENT  
 ENGINEERING DIVISION

WATER TREATMENT PLANT  
 MAIN BUILDING  
 BUILDING ENVELOPE

ARCHITECTURAL  
 DETAILS

CITY FILE NUMBER  
 SHEET OF  
 CITY DRAWING NUMBER  
 1-0601B-A-B0404-001-02D