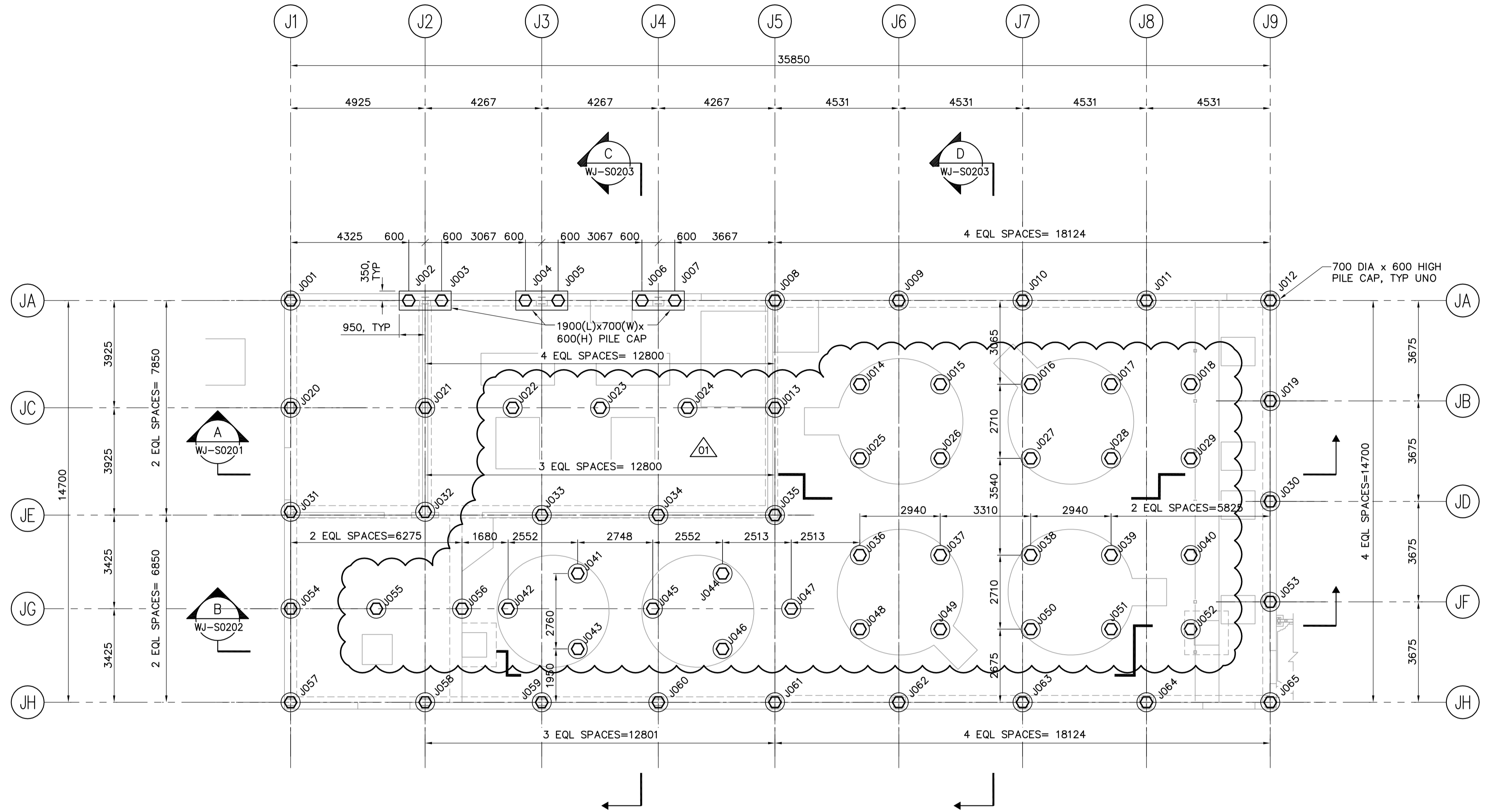
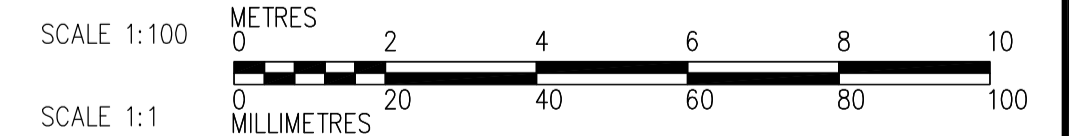


- NOTES:**
1. NUMBERING OF PILES DOES NOT INDICATE SEQUENCE OF INSTALLATION.
 2. ALL PILES TO BE 400mm DIAMETER HEX.
 3. FOR TYPICAL CAST IN PLACE PILE EXTENSION AND CUTOFF DETAILS SEE DRAWING WJ-S0505.
 4. SEE PILE SCHEDULE ON DWG WJ-S0505 FOR PILE ELEVATIONS AND COORDINATES.
 5. FOR GENERAL NOTES SEE DWG WS-S0001. IN CASE OF CONFLICTING INFORMATION, WJ-SERIES DRAWINGS GOVERN.



PILING PLAN
1:100



<p>Certificate of Authorization CH2M HILL Canada Ltd. No. 1441 Expiry: April 30, 2007</p>					ENGINEER'S SEAL ORIGINAL SIGNED BY D. KRUGER 2007/01/31	<p>THE CITY OF WINNIPEG WATER AND WASTE DEPARTMENT ENGINEERING DIVISION</p> <p>WATER TREATMENT PLANT SODIUM HYPOCHLORITE BUILDING SODIUM HYPOCHLORITE AND CHEMICAL STORAGE BUILDINGS</p> <p>STRUCTURAL SODIUM HYPOCHLORITE BUILDING PILING PLAN</p>	CITY FILE NUMBER
	DESIGNED BY: MH	CHECKED BY: AP	CONSULTANT DRAWING NO. WJ-F0105		SHEET OF		
	DRAWN BY: CR	APPROVED BY: AHL	RELEASED FOR CONSTRUCTION BY: R. SOROKOWSKI DATE: 2007/01/31		CITY DRAWING NUMBER		
	SCALE: 1:100	DATE: 2006/08/29	DATE: 2007/01/31		1-0601J-B-F0105-001-010		
B.M. ELEV.		NO. REVISIONS DATE BY					
01 792-2006 ADDENDUM 3 07/03/30 MH		00 ISSUED FOR TENDER 07/01/31 MH					