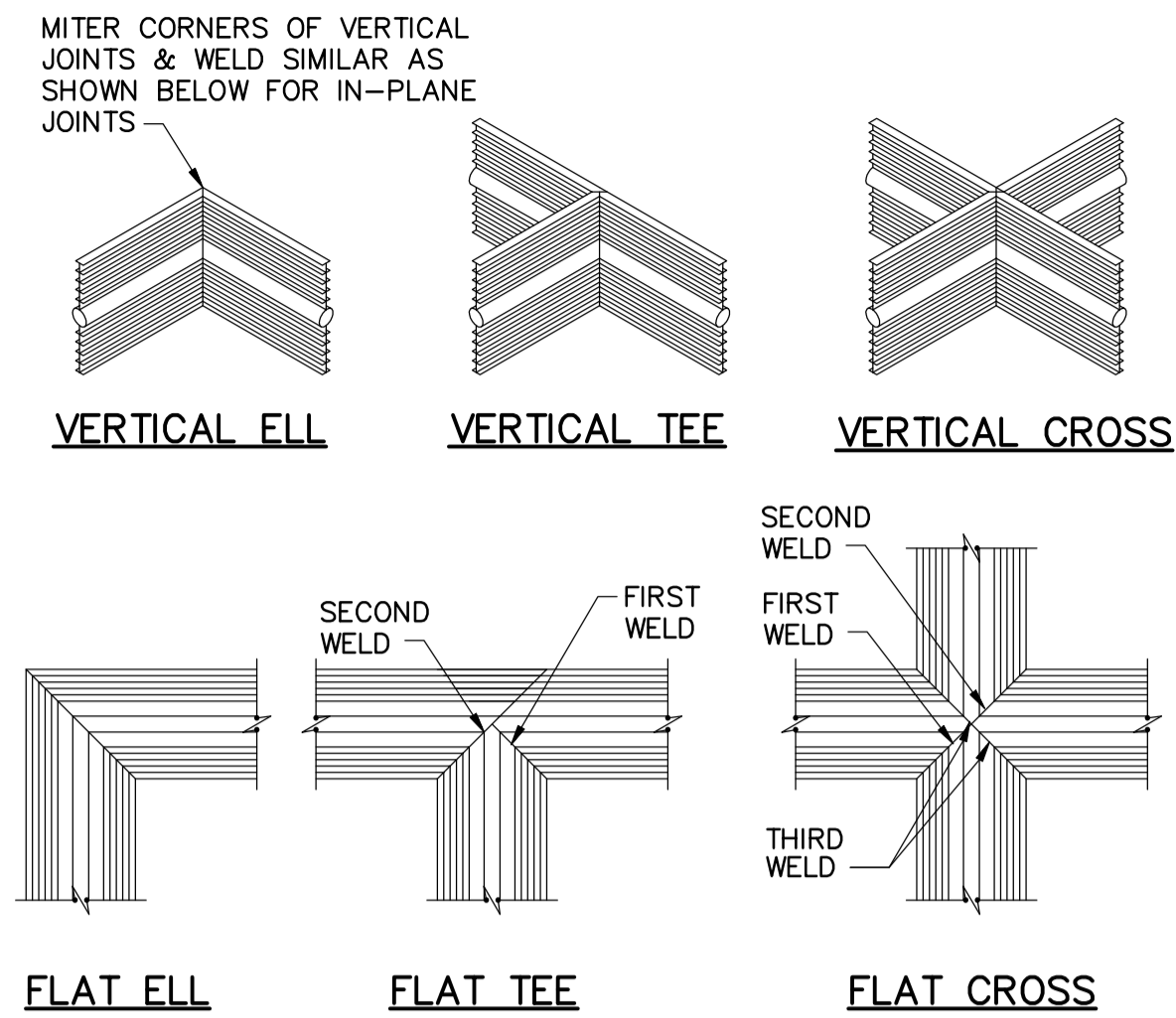


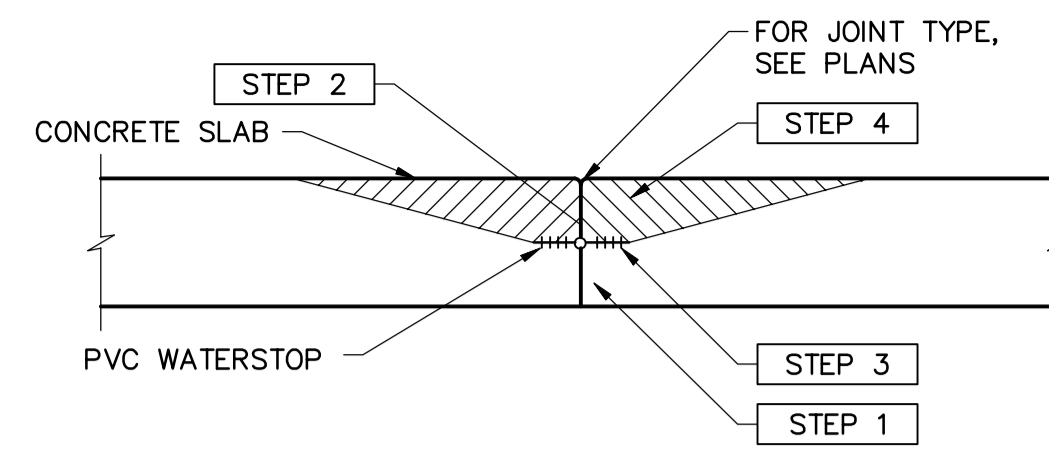
- NOTES:**
- JOIN WATERSTOP TO FORM A CONTINUOUS UNBROKEN WATERSEAL.
 - ASSEMBLE 'TEES', 'CROSSES', AND 'ELLS' ACCURATELY.
 - WELD STRAIGHT BUTT SPLICE WATERSTOP IN ACCORDANCE WITH MANUFACTURER'S WRITTEN INSTRUCTIONS.
 - WELD TO PENETRATE FULL DEPTH OF THE WATERSTOP MATERIAL AT SPLICES.

1 PVC WATERSTOP
N.T.S.



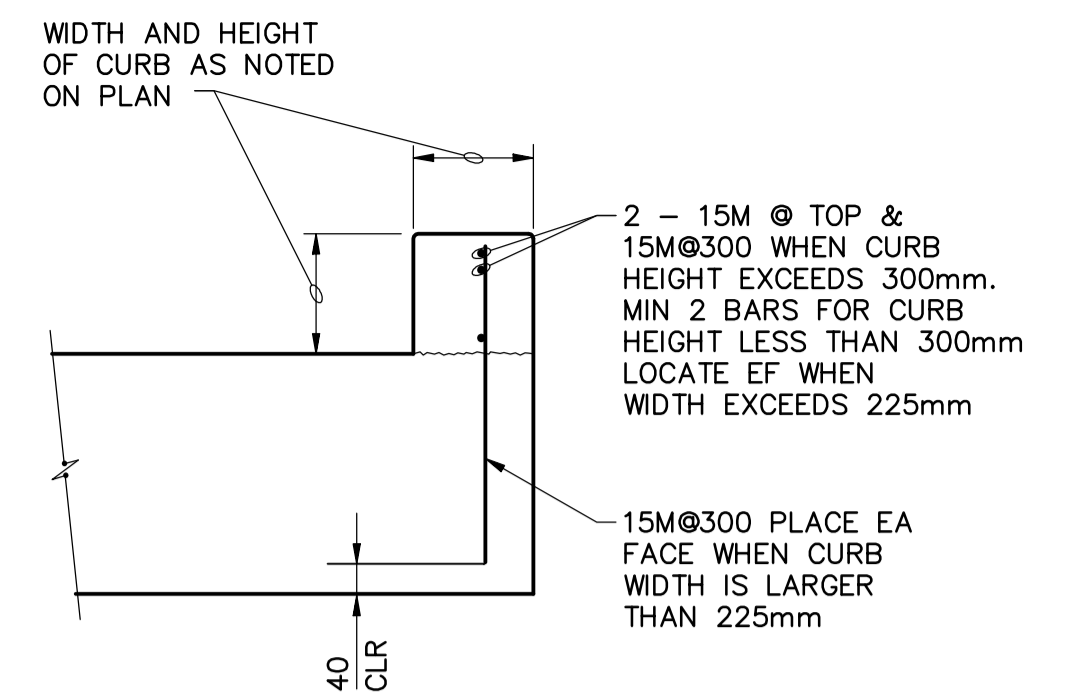
- NOTE:**
ALL WELDS SHOWN SHALL BE BY WATERSTOP MANUFACTURER (SEE SPECIFICATIONS)

2 WATERSTOP JOINTS
N.T.S.

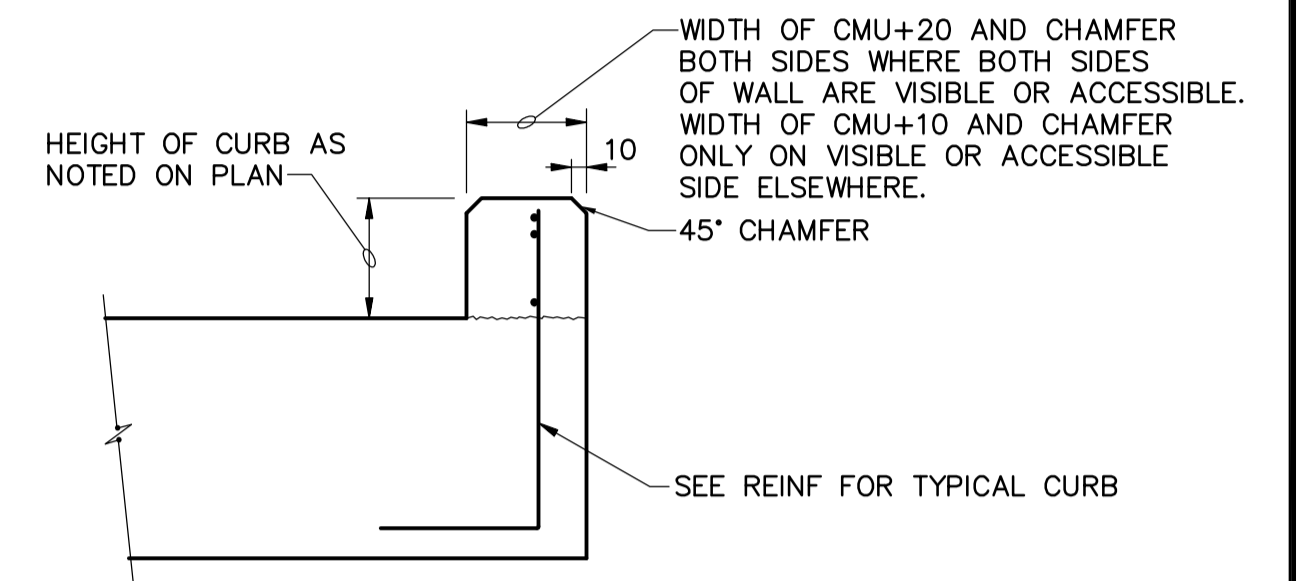


- NOTES:**
PLACEMENT SEQUENCE SHOWN REQUIRED ON BOTH SIDES OF JOINTS, IN ALL CONCRETE SLAB AND FOOTING POURS WITH HORIZONTALLY PLACED PLASTIC WATERSTOPS.
- STEP 1**
PLACE CONCRETE BELOW WATERSTOP FIRST, REMOVE ALL AIR VOIDS BY VIBRATING THOROUGHLY.
- STEP 2**
TO CONFIRM THERE ARE NO AIR VOIDS, LIFT WATERSTOP. A CONTINUOUS IMPRESSION OF THE WATERSTOP, INCLUDING EDGE OF BULB, SHOULD BE VISIBLE IN THE FRESH CONCRETE. CONTINUE THIS PROCEDURE ALONG THE ENTIRE POURED JOINT, END TO END. IF A CONTINUOUS IMPRESSION IS CONFIRMED, PROCEED WITH STEP 4. IF A VOID LARGER THAN 6mm IN DIAMETER IS PRESENT ANYWHERE IN THE WATERSTOP IMPRESSION, ADDITIONAL CONCRETE SHALL BE PLACED UNDER THE WATERSTOP, VIBRATED, AND STEP 2 REPEATED.
- STEP 3**
IF A VOID LARGER THAN 6mm IN DIAMETER IS PRESENT IN THE WATERSTOP IMPRESSION, ADDITIONAL CONCRETE SHALL BE PLACED UNDER THE WATERSTOP, VIBRATED, AND STEP 2 REPEATED.
- STEP 4**
FINISH PLACING CONCRETE ABOVE THE WATERSTOP TO TOP OF SLAB.

3 CONCRETE PLACEMENT SEQUENCE
N.T.S.

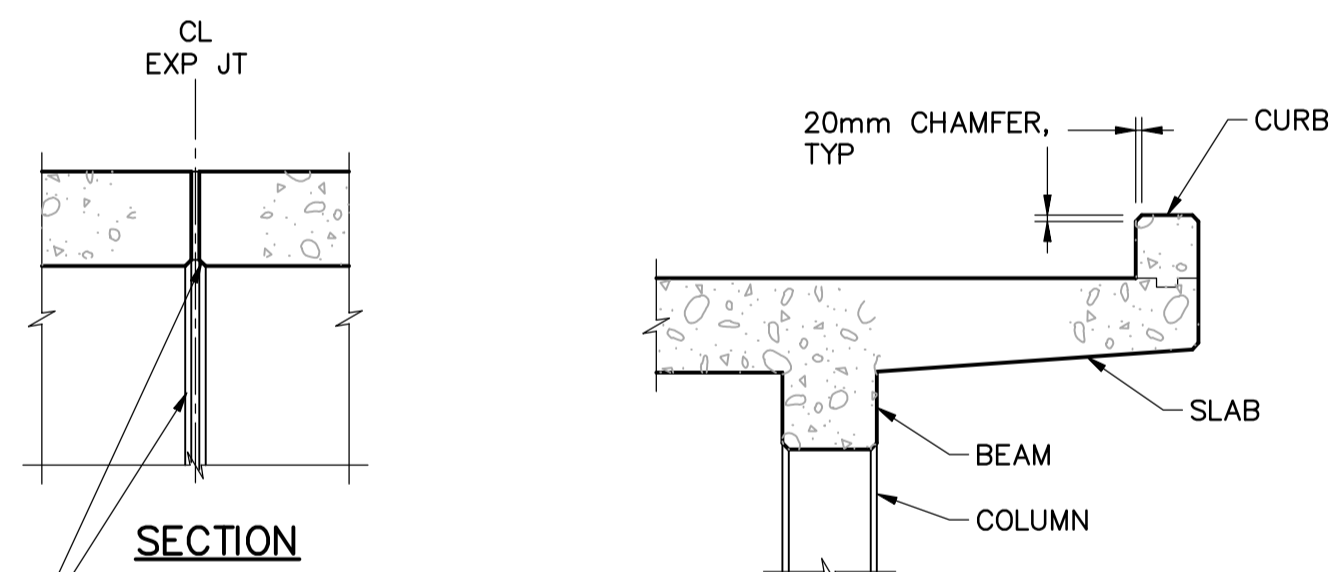


TYPICAL CURB



CURB FOR CMU WALLS

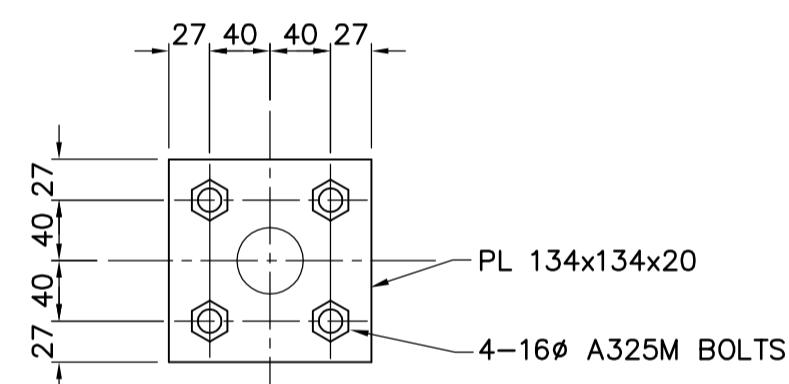
4 CONCRETE CURB
N.T.S.



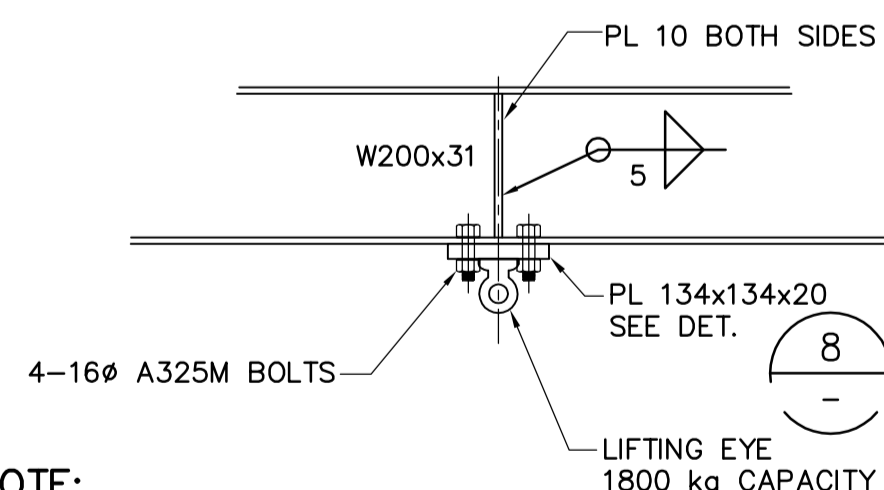
PROVIDE CHAMFER AT EXPANSION JOINT AT SOFFIT OF SLABS AND ON WALLS IN DRY AREAS

- NOTE:**
PROVIDE CHAMFER ALONG EXPOSED EDGES ON CONCRETE SLABS, BEAMS, CURBS, COLUMNS, WALL OPENINGS AND SIMILAR ITEMS UNLESS OTHERWISE NOTED OR DIRECTED.

5 CHAMFERS
N.T.S.

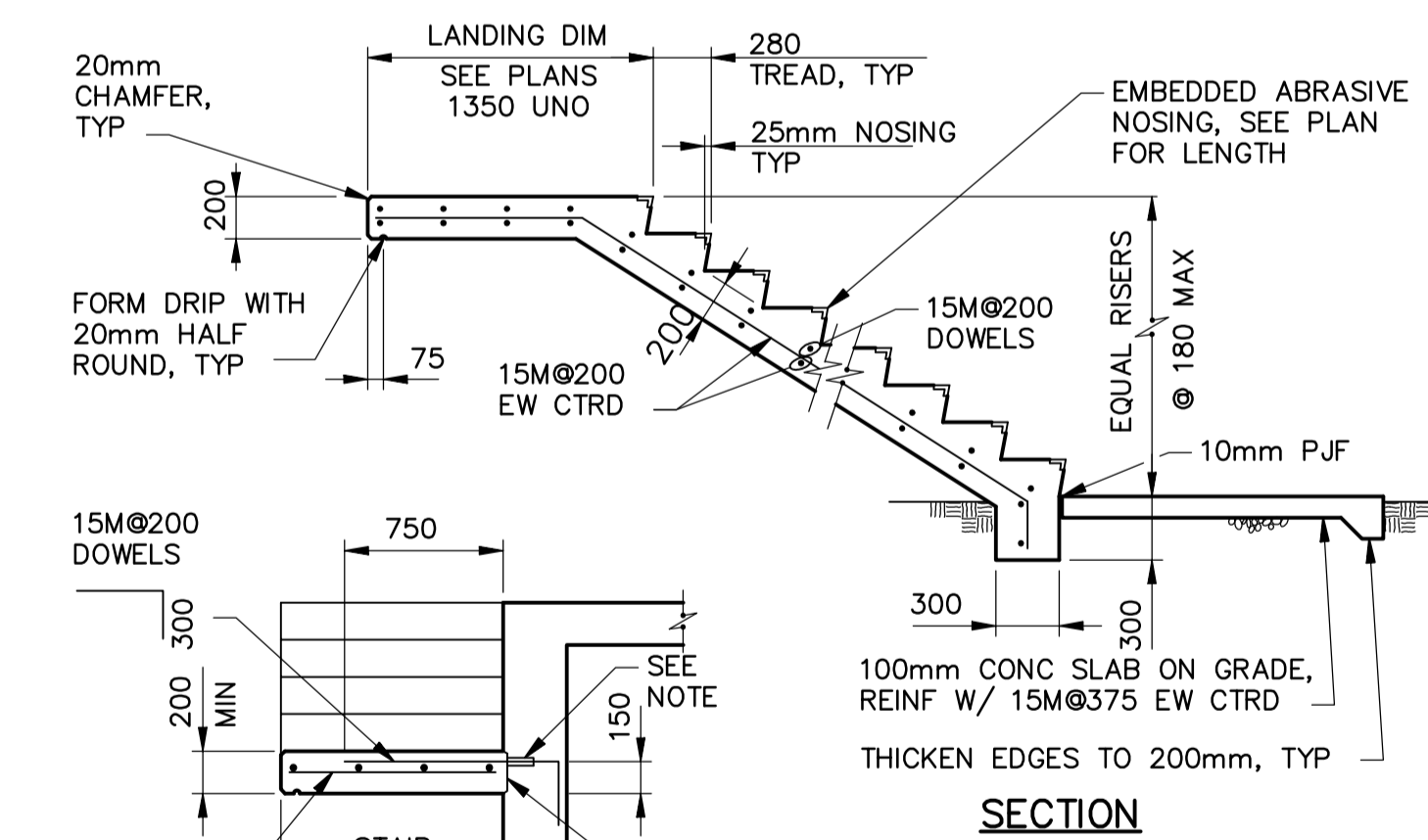
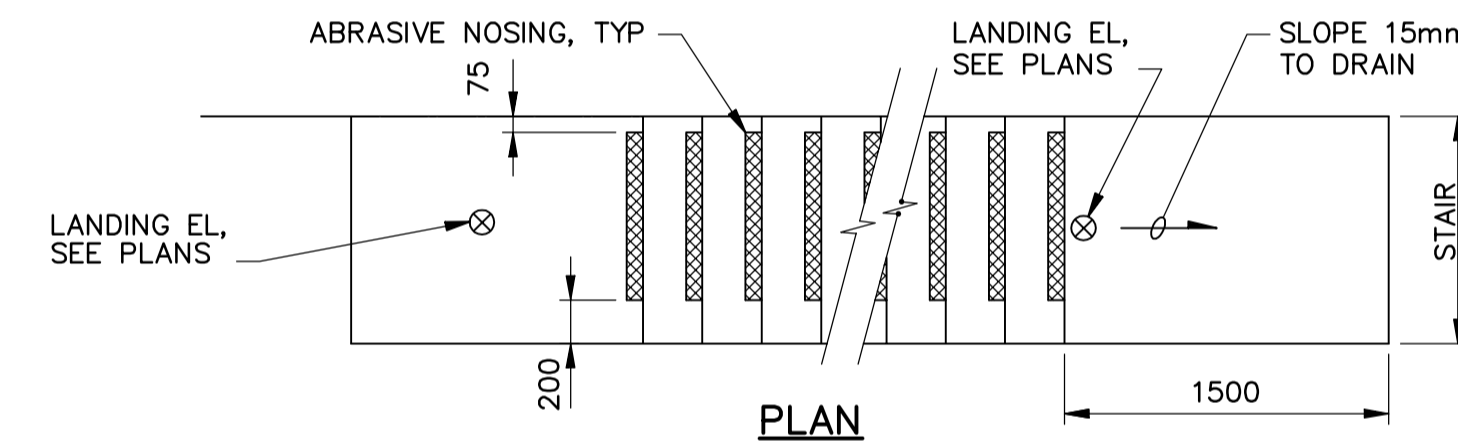


8 DETAIL
1:5



- NOTE:**
1. FIELD VERIFY LOCATIONS PRIOR TO FABRICATION. COORDINATE w/ MECHANICAL SUBCONTRACTOR.

6 LIFTING EYE
1:10



- NOTE:**
CONTRACTOR'S OPTION TO USE THREADED REINFORCING WITH MECHANICAL THREADED CONNECTORS FOR FORMING.

7 CONCRETE STAIR - WITHOUT CLOSURE WALL
N.T.S.

<p>Certificate of Authorization CH2M HILL Canada Ltd. No. 1441 Expiry: April 30, 2007</p>	B.M. ELEV.	<p>Frederickson Cooper ARCHITECTS</p>	<p>A Tyco International Ltd. Company</p>	ENGINEER'S SEAL	<p>THE CITY OF WINNIPEG WATER AND WASTE DEPARTMENT ENGINEERING DIVISION</p>			
				DESIGNED BY: MH		CHECKED BY: AP	ORIGINAL SIGNED BY: D. KRUGER	
				DRAWN BY: CR		APPROVED BY: AHL	2007/01/31	
				SCALE: NTS		RELEASED FOR CONSTRUCTION BY: R. SOROKOWSKI	CONSULTANT DRAWING NO. WJ-S0453	
	NO. REVISIONS	DATE	DATE	2006/08/21	DATE	2007/01/31	<p>WATER TREATMENT PLANT SODIUM HYPOCHLORITE BUILDING SODIUM HYPOCHLORITE AND CHEMICAL STORAGE BUILDINGS</p>	<p>CITY FILE NUMBER</p> <p>SHEET OF</p> <p>CITY DRAWING NUMBER</p> <p>1-0601J-A-S0453-001-010</p>