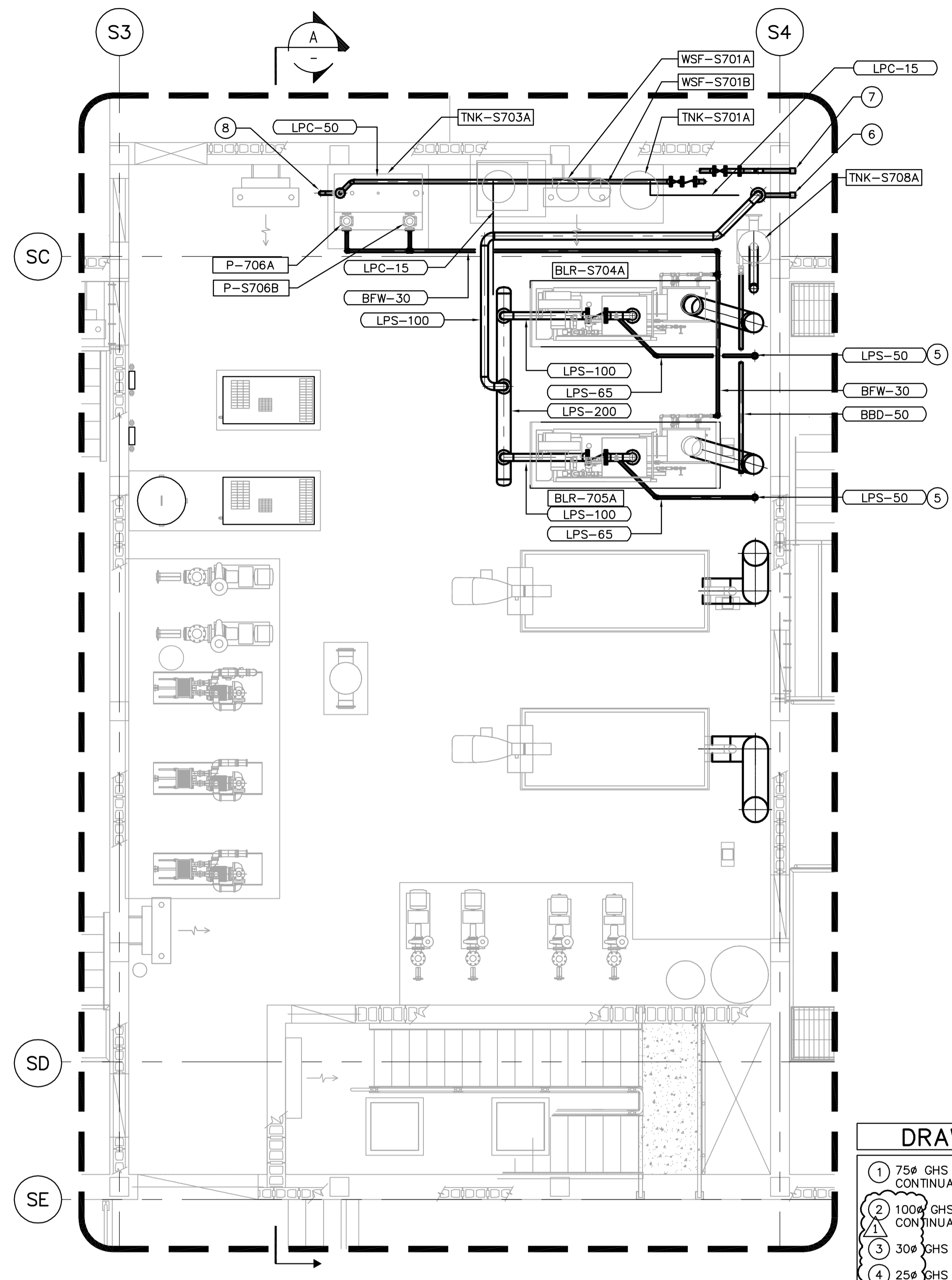


1 MECHANICAL ROOM HYDRONIC PARTIAL PLAN
1:50

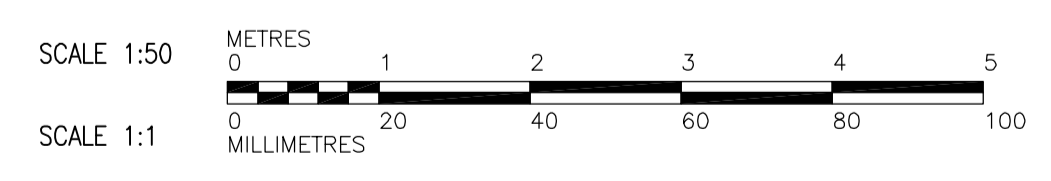


2 MECHANICAL ROOM STEAM PARTIAL PLAN
1:50

- DRAWING NOTES**
- 1 75# GHS AND GHR DOWN FROM HIGH LEVEL. SEE DRAWING WS-H0122 FOR CONTINUATION.
 - 2 100# GHS AND GHR DOWN FROM HIGH LEVEL. SEE DRAWING WS-H0122 FOR CONTINUATION.
 - 3 30# GHS AND GHR TO UNIT HEATER.
 - 4 25# GHS AND GHR TO BRIDGE.
 - 5 STEAM BOILER PRV DRIP PAN ELBOW WITH 50# VENT UP THROUGH ROOF.
 - 6 50# LPS QUICK CONNECT FOR NaOH RAILCAR UNLOADING.
 - 7 50# LPC QUICK CONNECT FOR NaOH RAILCAR UNLOADING.
 - 8 75# OVERFLOW TO DOWN TO FLOOR DRAIN.

GENERAL NOTES

1. COORDINATE WITH OTHER TRADES.



APEGM
Certificate of Authorization
Earth Tech Canada Inc.
No. 730 Expiry: April 30, 2007

B.M. ELEV.			
01	792-2006 ADDENDUM 2	07/03/20	LJW
00	ISSUED FOR TENDER	07/01/31	DL
NO.	REVISIONS	DATE	BY

CH2M HILL
Frederickson Cooper
ARCHITECTS

DESIGNED BY: JDB/DJP
DRAWN BY: DJP
SCALE: AS NOTED

CHECKED BY: PVL/AMA
APPROVED BY: AHL
RELEASED FOR CONSTRUCTION BY: R. SOROKOWSKI
DATE: 2007/01/31

ENGINEER'S SEAL
ORIGINAL SIGNED BY: A. M. AFTANAS
2007/01/31
CONSULTANT DRAWING NO. WS-H0116

THE CITY OF WINNIPEG
WATER AND WASTE DEPARTMENT
ENGINEERING DIVISION

WATER TREATMENT PLANT
BULK CHEMICAL STORAGE
SODIUM HYPOCHLORITE AND CHEMICAL STORAGE BUILDING

CITY FILE NUMBER
SHEET OF
CITY DRAWING NUMBER
1-0601S-A-H0116-001-010

MECHANICAL
MECHANICAL ROOM PARTIAL PLANS