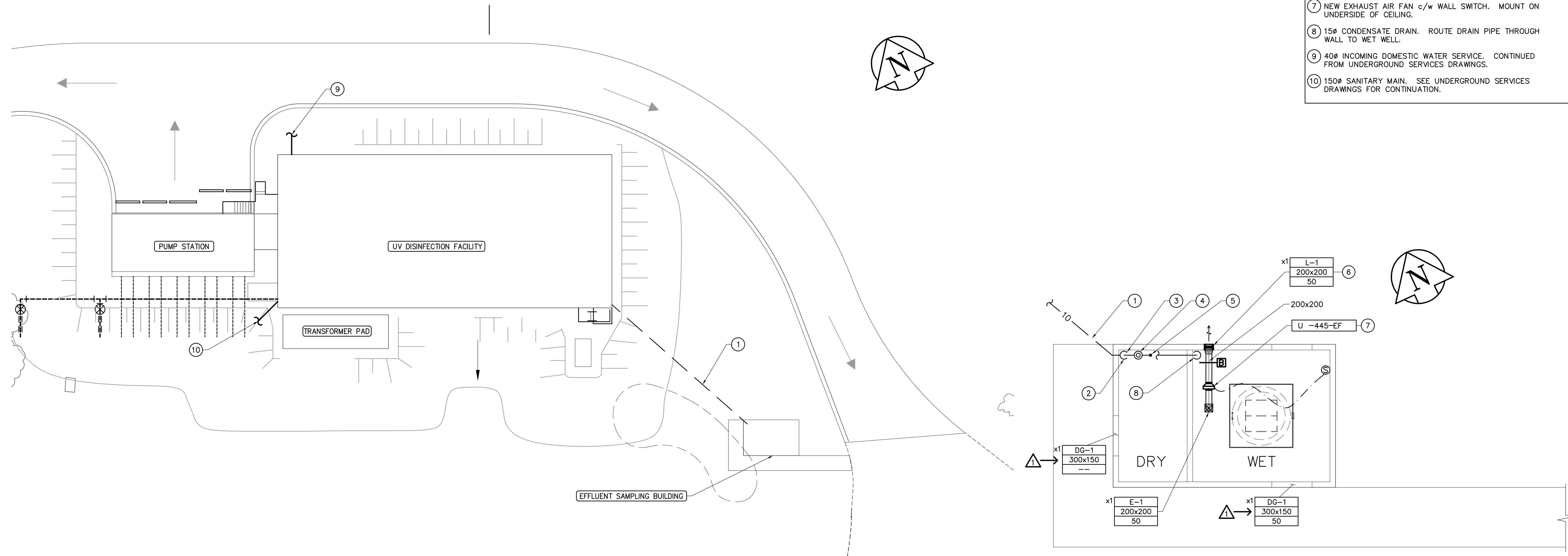


DRAWING NOTES

- ① 10# CA LINE RUNNING APPROXIMATELY 900mm BELOW GRADE. SEE DWG CM2.01. REFER TO UNDERGROUND SERVICES SPECIFICATIONS FOR EXACT EXCAVATION AND BACK FILLING REQUIREMENTS.
- ② RISE TO DRIP LEG IN BUILDING. SEE DETAIL ON DWG CM7.02.
- ③ 10# CA LINE RUNNING INDOORS. CONFIRM WITH CITY OF WINNIPEG INSTALLATION HEIGHT REQUIREMENTS.
- ④ COALESCING FILTER.
- ⑤ PROVIDE COMPRESSED AIR CONNECTION FOR CITY OF WINNIPEG SAMPLING EQUIPMENT. SEE DETAIL ON DWG CM7.02.
- ⑥ INSECT SCREEN SHALL BE INSTALLED WITH LOUVER.
- ⑦ NEW EXHAUST AIR FAN c/w WALL SWITCH. MOUNT ON UNDERSIDE OF CEILING.
- ⑧ 15# CONDENSATE DRAIN. ROUTE DRAIN PIPE THROUGH WALL TO WET WELL.
- ⑨ 40# INCOMING DOMESTIC WATER SERVICE. CONTINUED FROM UNDERGROUND SERVICES DRAWINGS.
- ⑩ 150# SANITARY MAIN. SEE UNDERGROUND SERVICES DRAWINGS FOR CONTINUATION.



1 MECHANICAL SITE PLAN
M1.02 SCALE 1:200

2 EFFLUENT SAMPLING BUILDING MECHANICAL
M1.02 SCALE 1:50



B.M. ELEV.	EARTH TECH <small>Earth Tech (Canada) Inc. Winnipeg, Manitoba 204.477.5381</small>			ENGINEER'S SEAL	THE CITY OF WINNIPEG Winnipeg WATER AND WASTE DEPARTMENT
	DESIGNED BY: PL	CHECKED BY: AMA	APPROVED BY: DT	ORIGINAL SIGNED BY: P.V. LAITINEN FEB. 18/05	
1 ISSUED FOR ADDENDUM 1 05/03/11 DC	HOR. SCALE: AS NOTED		RELEASED FOR CONSTRUCTION BY: T. KJARTANSON	CONSULTANT DRAWING NO. 66303D-CM1.02	CITY FILE NUMBER
0 ISSUED FOR TENDER 05/02/18 JEH	VERTICAL SCALE:		DATE 2005/01/20	DATE 2005-02-18	SHEET 2 OF 18
NO. REVISIONS	DATE	BY	MECHANICAL UV FACILITY SITE PLAN EFFLUENT SAMPLING BUILDING MECHANICAL		
					CITY DRAWING NUMBER