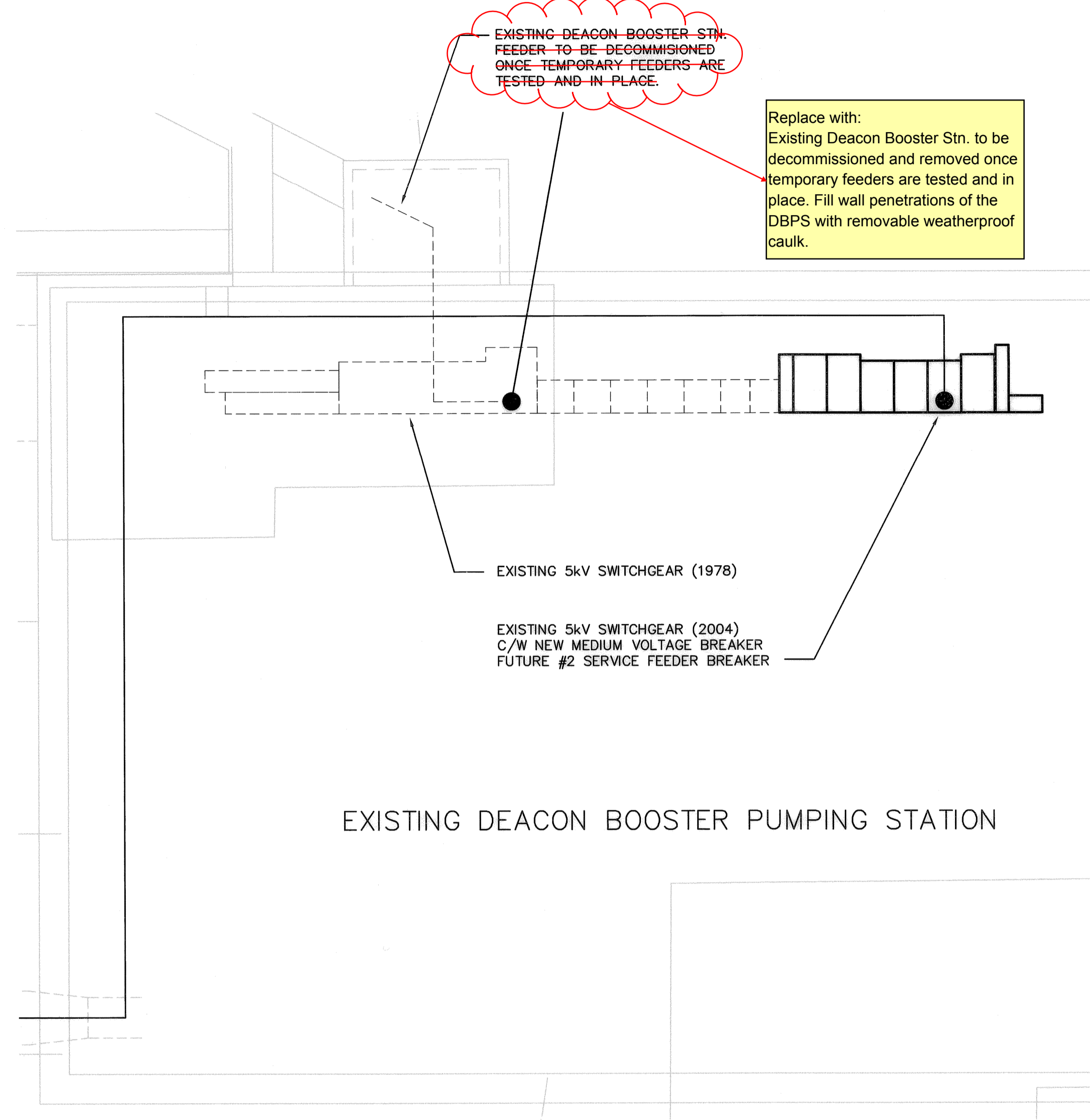


2x3C-#500MCM 5kV
TECK FEEDER FROM
NEW 1200A SWITCH,
1x15A, 120V CIRCUIT
FOR SWITCH HEATER

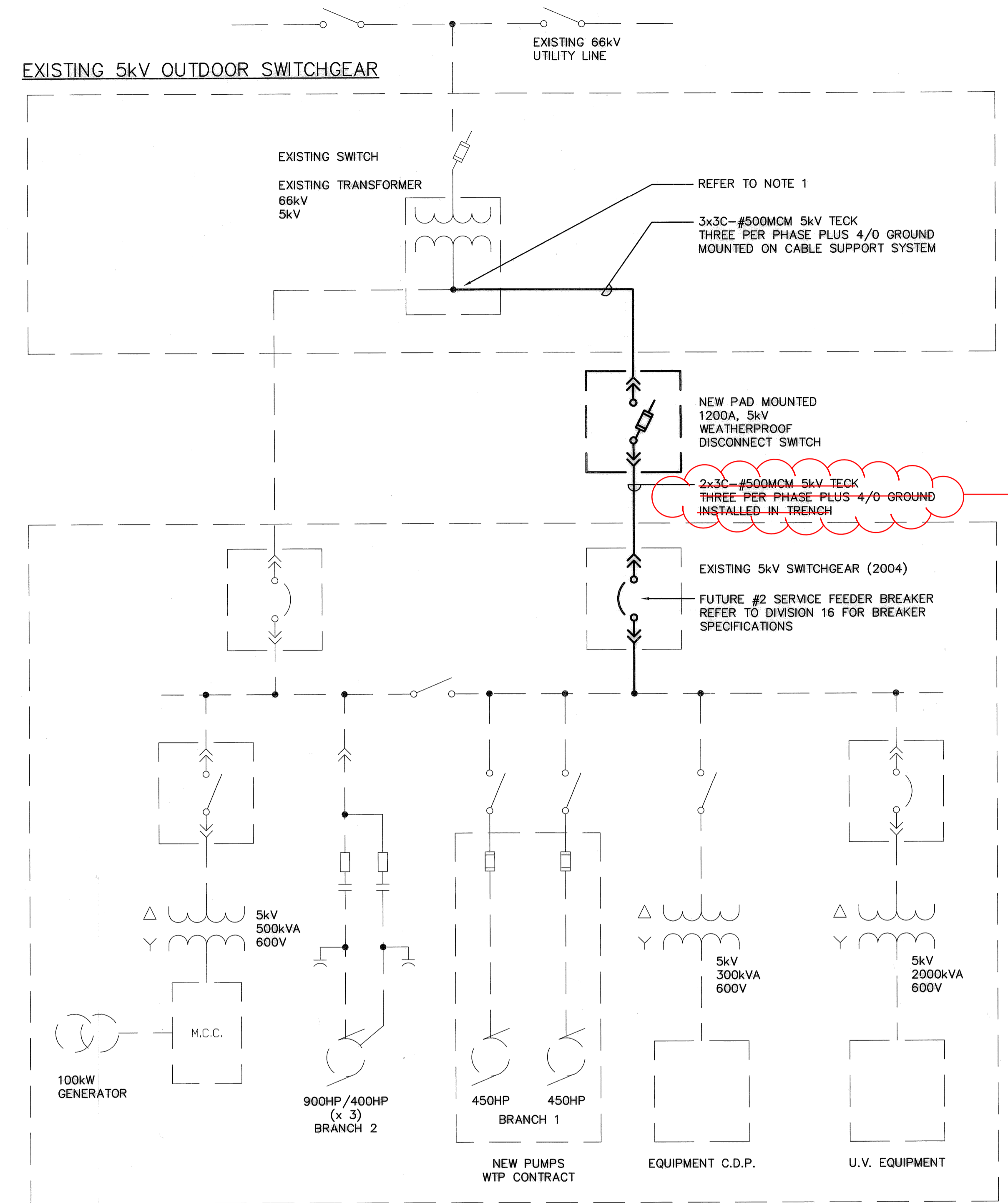


NOTES:

1. PROVIDE TWO (2) HOLE LONG BARREL COMPRESSION LUGS FOR CABLE CONNECTION TO SECONDARY TERMINALS ON EXISTING TRANSFORMER. MODIFY CONNECTION TERMINATIONS AS REQUIRED.

1 PART PLAN - DISTRIBUTION
E003 SCALE 1:100

EXISTING 5kV OUTDOOR SWITCHGEAR



EXISTING DEACON PUMPING STATION

NORTH MEZZANINE FLOOR
NOT TO SCALE