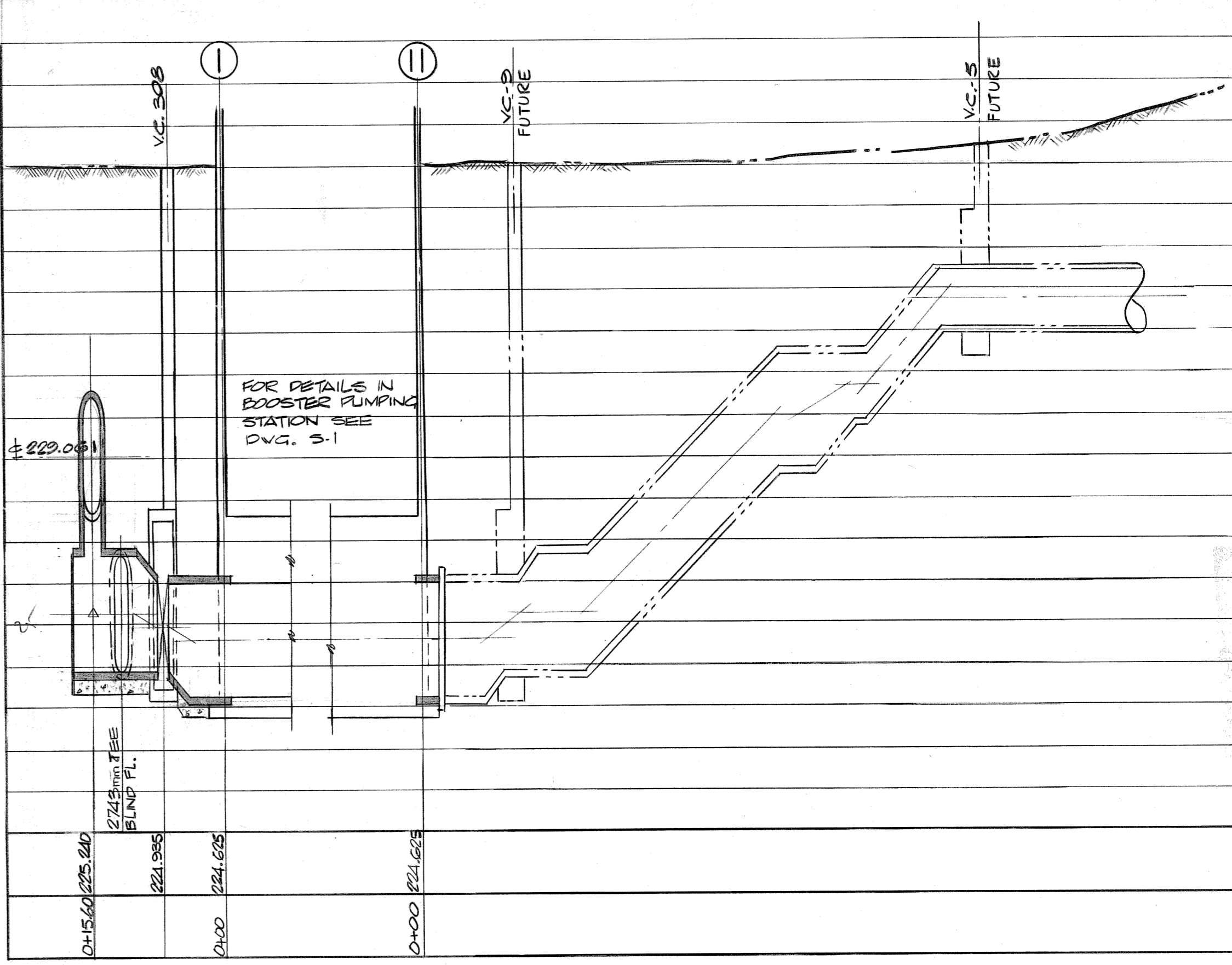
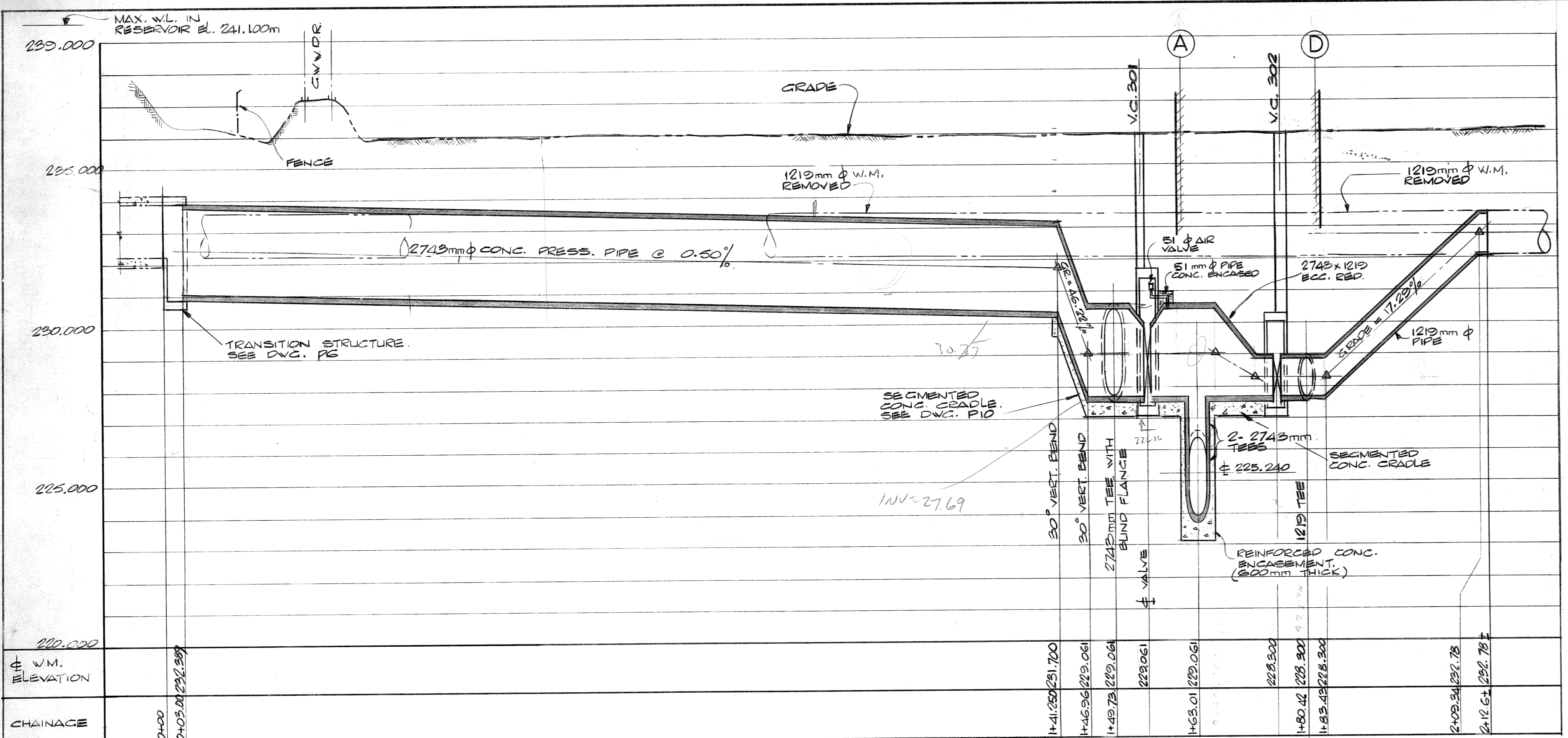
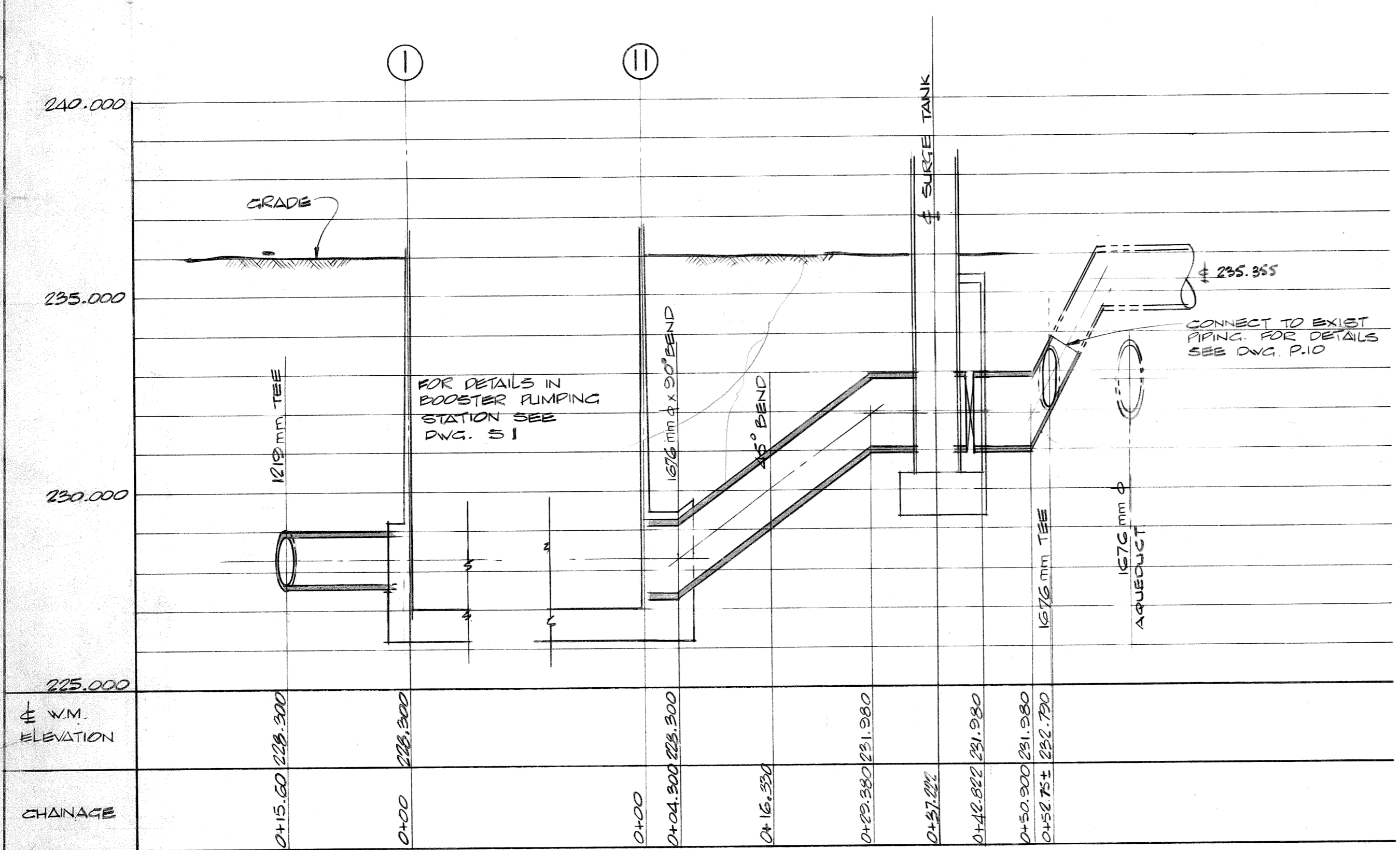


10 DBP-68



2743mm  $\phi$  SUCTION FROM RESERVOIR

2743mm  $\phi$  SUCTION FROM AQUEDUCT



DISCHARGE MAINS FROM PUMPHOUSE

Hooper 13/4/78

**AS BUILT**

PROVINCE OF MANITOBA  
 B. D. MacBRIDE  
 2014478  
 REGISTERED ENGINEER

HOR. 1:500  
 SCALE: VERT. 1:100  
 DATE: MAY 30, 1978  
 CONSULTANT DRAWING No. **P5 of 10**  
 CITY DRAWING No. BP-68

DIMENSIONS IN MILLIMETRES EXCEPT AS NOTED

CONSULTANT DIVISION OF UTILITY ENGINEERING OFFICE CENTRAL FILE DRAWING FILE NUMBER ENGINEERING OFFICE SHEET NO. NO. OF SHEETS SITE SECURITY ACCESS NO. OF FRAMES REFERENCE NO. DATE FILMED GRID CO-ORDINATES MICROFILMING WORKS & OPERATIONS DEPARTMENT	JAMES F. MACLAREN LIMITED CONSULTING ENGINEERS, PLANNERS AND SCIENTISTS WINNIPEG · LONDON · WINDSOR · WATERLOO · TORONTO	THE CITY OF WINNIPEG WATERWORKS, WASTE AND DISPOSAL DIVISION DEACON BOOSTER PUMPING STATION PROJECT PIPING PROFILES	HOR. 1:500 SCALE: VERT. 1:100 DATE: MAY 30, 1978 CONSULTANT DRAWING No. <b>P5 of 10</b> CITY DRAWING No. BP-68
REV. 1 REVISIED TO AS BUILT DESCRIPTION BY DATE	DRAWN BY: SWS CHECKED BY: R.F.J.F. DESIGNED BY: BMacB APPROVED BY: [Signature] DATE	VSN SEP 80	