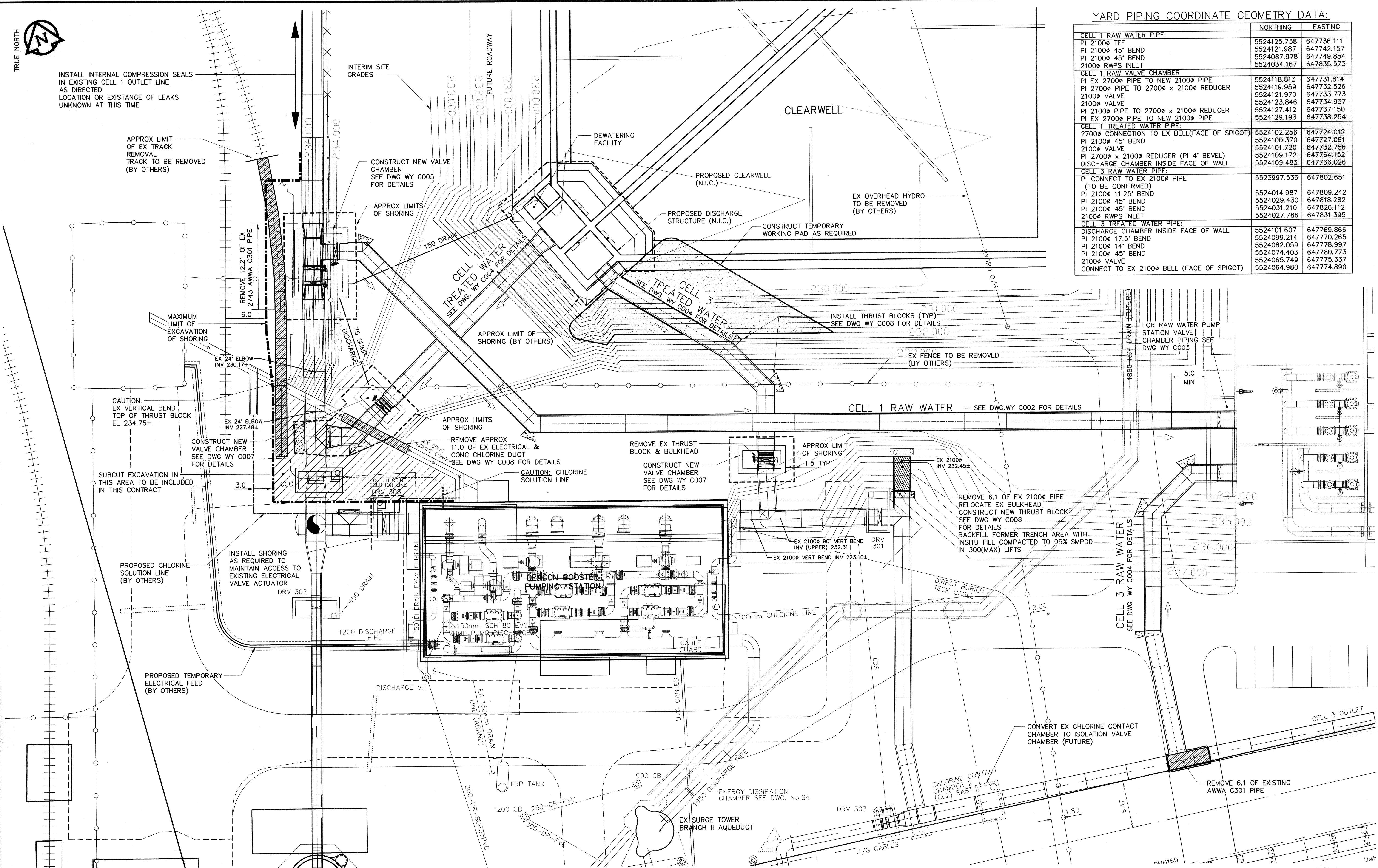


INSTALL INTERNAL COMPRESSION SEALS IN EXISTING CELL 1 OUTLET LINE AS DIRECTED LOCATION OR EXISTENCE OF LEAKS UNKNOWN AT THIS TIME

YARD PIPING COORDINATE GEOMETRY DATA:

	NORTHING	EASTING
CELL 1 RAW WATER PIPE:		
PI 2100Ø TEE	5524125.738	647736.111
PI 2100Ø 45° BEND	5524121.987	647742.157
PI 2100Ø 45° BEND	5524087.978	647749.854
2100Ø RWPS INLET	5524034.167	647835.573
CELL 1 RAW VALVE CHAMBER		
PI EX 2700Ø PIPE TO NEW 2100Ø PIPE	5524118.813	647731.814
PI 2700Ø PIPE TO 2700Ø x 2100Ø REDUCER	5524119.959	647732.526
2100Ø VALVE	5524121.970	647733.773
2100Ø VALVE	5524123.846	647734.937
PI 2100Ø PIPE TO 2700Ø x 2100Ø REDUCER	5524127.412	647737.150
PI EX 2700Ø PIPE TO NEW 2100Ø PIPE	5524129.193	647738.254
CELL 1 TREATED WATER PIPE:		
2700Ø CONNECTION TO EX BELL(FACE OF SPIGOT)	5524102.256	647724.012
PI 2100Ø 45° BEND	5524100.370	647727.081
2100Ø VALVE	5524101.720	647732.756
PI 2700Ø x 2100Ø REDUCER (PI 4° BEVEL)	5524109.172	647764.152
DISCHARGE CHAMBER INSIDE FACE OF WALL	5524109.483	647766.026
CELL 3 RAW WATER PIPE:		
PI CONNECT TO EX 2100Ø PIPE (TO BE CONFIRMED)	5523997.536	647802.651
PI 2100Ø 11.25' BEND	5524014.987	647809.242
PI 2100Ø 45° BEND	5524029.430	647818.282
PI 2100Ø 45° BEND	5524031.210	647826.112
2100Ø RWPS INLET	5524027.786	647831.395
CELL 3 TREATED WATER PIPE:		
DISCHARGE CHAMBER INSIDE FACE OF WALL	5524101.607	647769.866
PI 2100Ø 17.5' BEND	5524099.214	647770.265
PI 2100Ø 14' BEND	5524082.059	647778.997
PI 2100Ø 45° BEND	5524074.403	647780.773
2100Ø VALVE	5524065.749	647775.337
CONNECT TO EX 2100Ø BELL (FACE OF SPIGOT)	5524064.980	647774.890

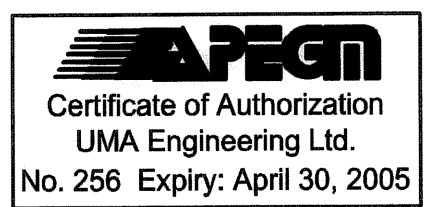
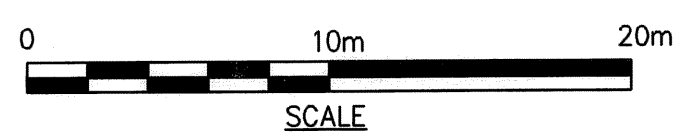


SITE CONSTRUCTION NOTES:

- BULK EXCAVATION WILL BE COMPLETED PRIOR TO CONSTRUCTION (BY OTHERS).
- CLEARWELL BASE GRADE WILL BE EXCAVATED TO 230.00m±. WORK PADS AND FILL PLACED FOR CONSTRUCTION OF YARD PIPING SHALL BE REMOVED UPON COMPLETION OF CONSTRUCTION
- COORDINATE CONSTRUCTION ACTIVITIES IN DISCHARGE STRUCTURE WITH CONCRETE CONTRACTOR.
- CONFIRM DECOMMISSIONING OF HYDRO ELECTRICAL FEED & CHLORINE FEED PRIOR TO DEMOLITION OF HYDRO/CHLORINE DUCT.

BENCHMARK NOTES:

DRAWING COORDINATES ARE UTM NAD83 - SCALE FACTOR 0.99983
 B.M. No. NORTHING EASTING ELEVATION
 FILE 136 5523873.734 647764.406 236.242
 FILE 133 5523256.606 647782.387 236.056



B.M. ELEV.	DATE	BY
1	REVISED ADDENDUM No. 1	05/05/02 WJd
0	ISSUED FOR TENDER	05/04/14 WJd
A	ISSUED FOR REVIEW	05/04/06 WJd
NO.	REVISIONS	

DESIGNED BY: MGM		CHECKED BY: CCM	
DRAWN BY: WJd		APPROVED BY: <i>[Signature]</i>	
HOR. SCALE: 1:250		RELEASED FOR CONSTRUCTION BY: R. A. Sorokowski	
VERTICAL SCALE: -		DATE: April 17, 2005	

ENGINEER'S SEAL
 ORIGINAL SIGNED BY: C. C. MACEY
 2005/04/17
 CONSULTANT DRAWING NO. WY C001

THE CITY OF WINNIPEG
 WATER AND WASTE DEPARTMENT
 ENGINEERING DIVISION
 WINNIPEG WATER TREATMENT PROGRAM
 CONSTRUCTION OF YARD PIPING AND VALVE CHAMBERS
 CIVIL
 YARD PIPING - SITE PLAN
 PLAN & COORDINATE GEOMETRY

CITY FILE NUMBER: -
 SHEET 1 OF 1
 CITY DRAWING NUMBER: 1-0601Y-C-C0001-001-01D