

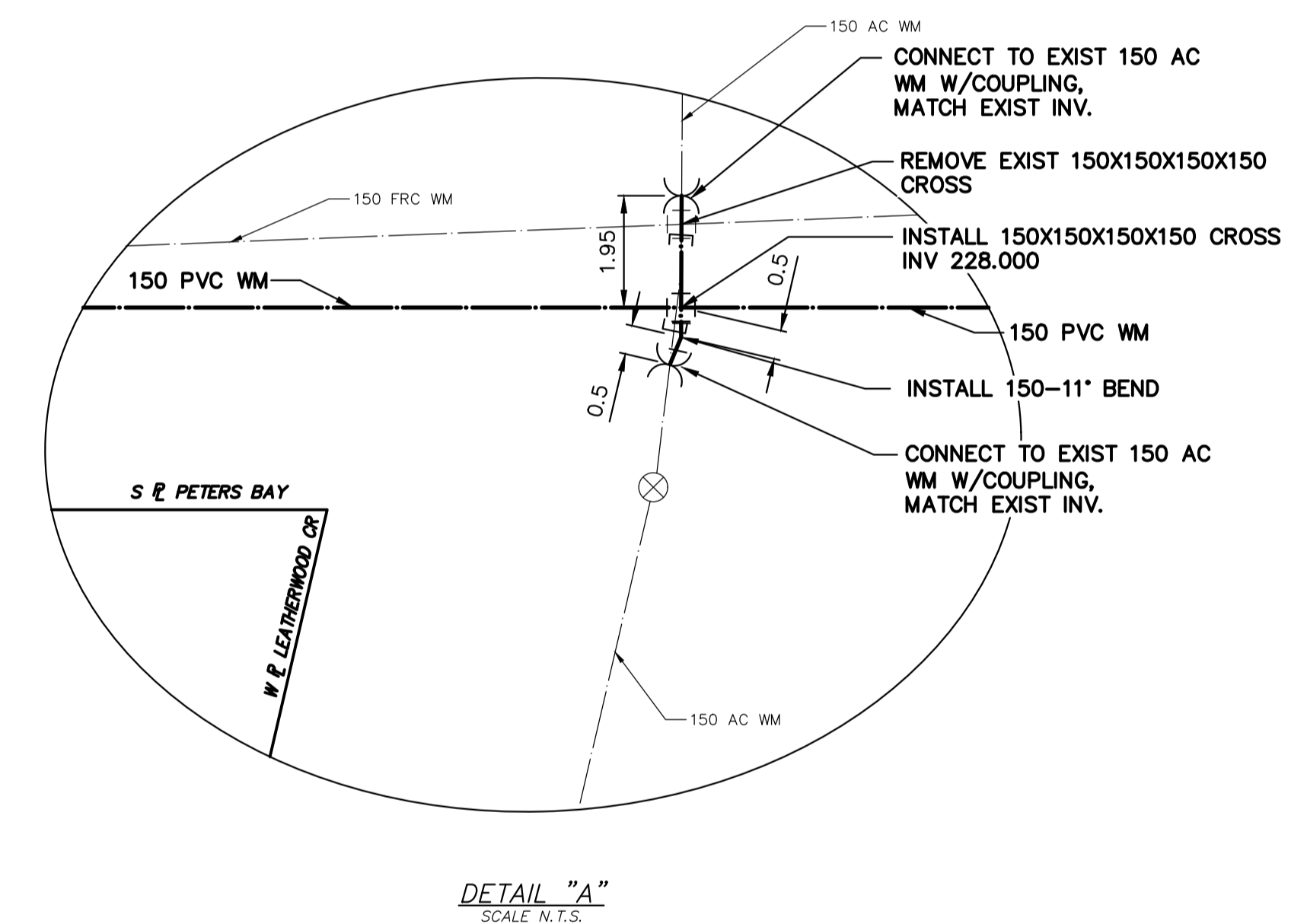
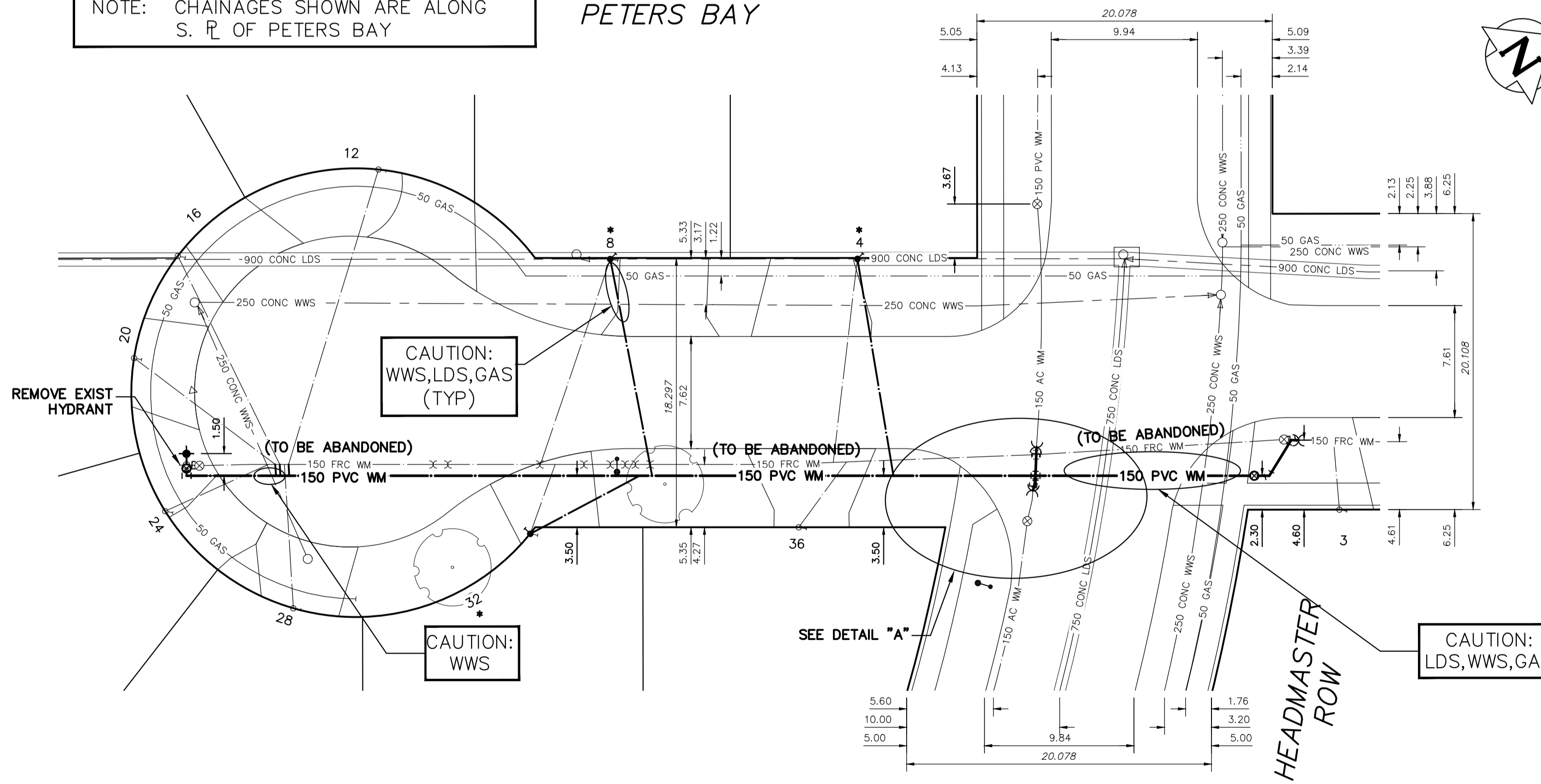
**WATER SERVICE INFORMATION**

ADDRESS	SIZE (mm) MATERIAL (STREET)	SIZE (mm) MATERIAL (PROP.)	SHORT & LONG MEASUREMENT	CORP LOCATION	REMARKS
4 PETERS BAY RESIDENTIAL	20 CU	25 CU	7.20 NSL BLDG	1.6 S OF S/C	RENEW TO R W/20 CU
8 PETERS BAY RESIDENTIAL	20 CU	20 CU	8.140 SSL HEADMASTER RW	5.4 S OF S/C	RENEW TO R W/20 CU
12 PETERS BAY RESIDENTIAL	20 CU	20 CU	24.930 SSL HEADMASTER RW	6.1 S OF S/C	RECONNECT SERVICE
16 PETERS BAY RESIDENTIAL	20 CU	20 CU	4.68 SNL BLDG	6.1 S OF S/C	RECONNECT SERVICE
20 PETERS BAY RESIDENTIAL	20 CU	20 CU	40.670 SSL HEADMASTER RW	5.9 N OF S/C	RECONNECT SERVICE
24 PETERS BAY RESIDENTIAL	20 CU	20 CU	54.320 SSL HEADMASTER RW	7.2 S OF S/C	RECONNECT SERVICE
28 PETERS BAY RESIDENTIAL	20 CU	20 CU	7.11 EWL BLDG	6.9 N OF S/C	RECONNECT SERVICE
32 PETERS BAY RESIDENTIAL	20 CU	20 CU	53.020 SSL HEADMASTER RW	0.6 S OF S/C	RECONNECT SERVICE
36 PETERS BAY RESIDENTIAL	20 CU	20 CU	2.97 SNL BLDG	1.7 N OF S/C	RENEW TO R W/20 CU
			44.430 SSL LEATHERWOOD CR	3.2 N OF S/C	RECONNECT SERVICE

\* SERVICES TO BE RENEWED TO R. ALL OTHERS TO BE RECONNECTED

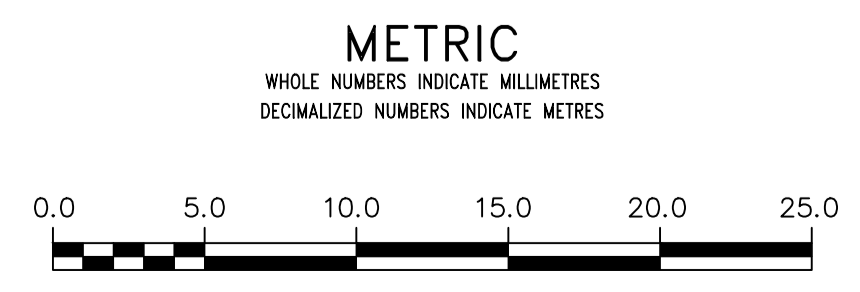
NOTE: CHAINAGES SHOWN ARE ALONG S. R. OF PETERS BAY

PETERS BAY



FOR INDEX SEE D-16489

NOTE: ALL VALVES TO BE INSTALLED CLOCKWISE TO CLOSE



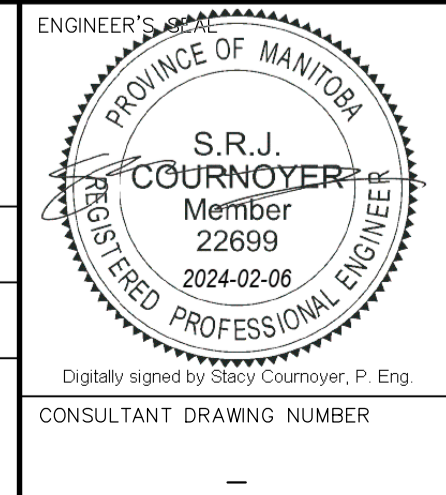
**WARNING**  
IF POWER EQUIPMENT OR EXPLOSIVES ARE TO BE USED FOR EXCAVATION ON THIS PROJECT THE CONTRACTOR MUST:  
1) NOTIFY THE GAS COMPANY OF THE PROPOSED LOCATION OF EXCAVATION.  
2) TAKE PRECAUTION TO AVOID DAMAGE TO GAS COMPANY INSTALLATIONS.  
SEE PROVINCIAL REGULATION 210/72 FOR DETAILS

**LOCATION APPROVED**  
UNDERGROUND STRUCTURES  
SUPV. U/G STRUCTURES COMMITTEE DATE  
NOTE:  
LOCATION OF UNDERGROUND STRUCTURES AS SHOWN ARE BASED ON THE BEST INFORMATION AVAILABLE BUT NO GUARANTEE IS GIVEN THAT ALL EXISTING UTILITIES ARE SHOWN OR THAT THE GIVEN LOCATIONS ARE EXACT. CONFIRMATION OF EXISTENCE AND EXACT LOCATION OF ALL SERVICES MUST BE OBTAINED FROM THE INDIVIDUAL UTILITIES BEFORE PROCEEDING WITH CONSTRUCTION.

VERTICAL DATUM: CGVD28 (HT2.0 Geoid)  
HORIZONTAL DATUM: NAD83 (June 1990), Zone 14

NO.	REVISIONS	DATE	BY

DESIGNED BY	JB	CHECKED BY	SC
DRAWN BY	AJ	APPROVED BY	SC
SCALE:	HORIZONTAL 1:250	RELEASED FOR CONSTRUCTION	
	VERTICAL 1:50		
DATE	2024 02 06	DATE	



**THE CITY OF WINNIPEG**  
WATER AND WASTE DEPARTMENT  
ENGINEERING DIVISION

2024 WATER MAIN RENEWALS  
CONTRACT 1  
**PETERS BAY**  
PETERS BAY TO HEADMASTER ROW

SHEET 8 OF 10  
CITY DRAWING NUMBER  
D-16495

FILE PATH: R:\DRAWINGS\WATER\RENEWAL\2024 RENEWALS\Cont 1\Construction Dwg\ FILE NAME: Peters Bay.dwg