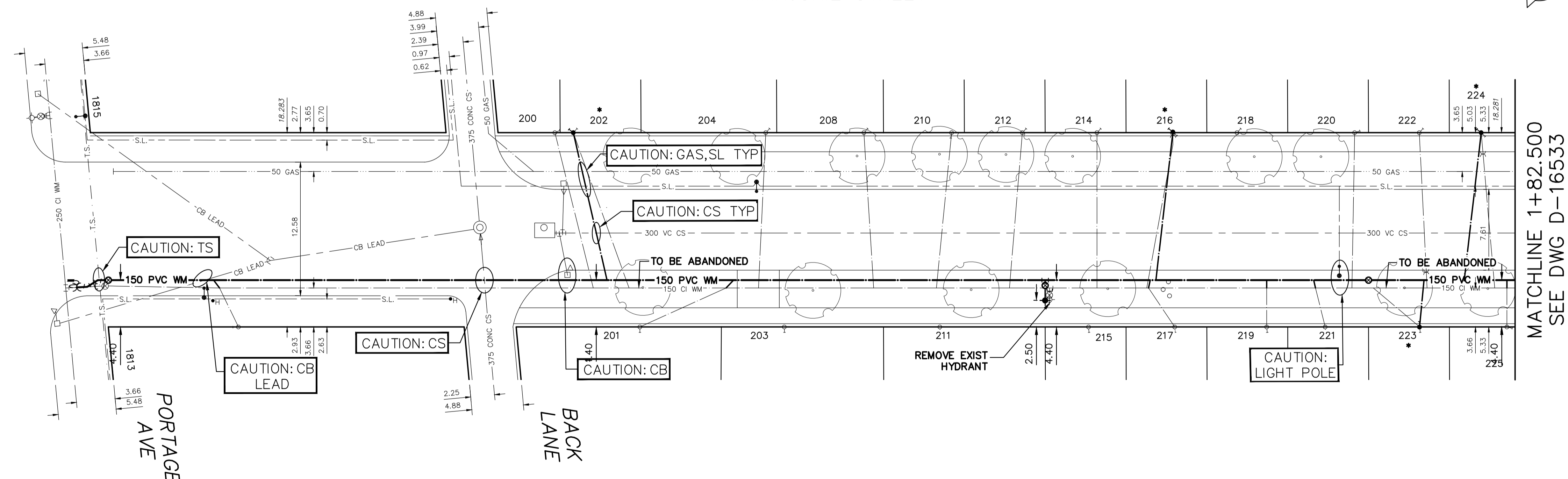


WATER SERVICE INFORMATION					
ADDRESS	SIZE (mm) MATERIAL (STREET)	SIZE (mm) MATERIAL (PROP.)	SHORT & LONG MEASUREMENT	CORP LOCATION	REMARKS
200 MARJORIE ST	25	25	4.93 NSL BLDG	3.6 N OF S/C	RECONNECT SERVICE
201 MARJORIE ST	CU	CU	43.760 NNL PORTAGE AVE	8.1 N OF S/C	RECONNECT SERVICE
RESIDENTIAL	-	-	50.060 NNL PORTAGE AVE	5.2 N OF S/C	RENEW TO R W/20 CU
202 MARJORIE ST	12	20	0.76 NSL BLDG	-	RECONNECT SERVICE
RESIDENTIAL	LEAD	CU	45.490 NNL PORTAGE AVE	0.9 N OF S/C	RECONNECT SERVICE
203 MARJORIE ST	-	-	5.44 NSL BLDG	-	RECONNECT SERVICE
RESIDENTIAL	-	-	63.670 NNL PORTAGE AVE	0.7 S OF S/C	RECONNECT SERVICE
204 MARJORIE ST	-	-	0.43 NSL BLDG	-	RECONNECT SERVICE
RESIDENTIAL	-	-	63.630 NNL PORTAGE AVE	0.9 N OF S/C	RECONNECT SERVICE
208 MARJORIE ST	20	12	4.97 NSL BLDG	-	RECONNECT SERVICE
RESIDENTIAL	CU	LEAD	72.870 NNL PORTAGE AVE	1.4 S OF S/C	RECONNECT SERVICE
210 MARJORIE ST	-	20	0.36 NSL BLDG	-	RECONNECT SERVICE
RESIDENTIAL	-	CU	81.120 NNL PORTAGE AVE	-	RECONNECT SERVICE
211 MARJORIE ST	-	-	3.80 NSL BLDG	-	RECONNECT SERVICE
RESIDENTIAL	-	-	78.320 NNL PORTAGE AVE	1.2 S OF S/C	RECONNECT SERVICE
212 MARJORIE ST	20	20	4.67 NSL BLDG	-	RECONNECT SERVICE
RESIDENTIAL	CU	CU	87.790 NNL PORTAGE AVE	OPP OF S/C	RECONNECT SERVICE
214 MARJORIE ST	-	-	4.30 NSL BLDG	-	RECONNECT SERVICE
RESIDENTIAL	-	-	94.820 NNL PORTAGE AVE	-	RECONNECT SERVICE
215 MARJORIE ST	-	12	3.41 NSL BLDG	-	RECONNECT SERVICE
RESIDENTIAL	-	LEAD	92.320 NNL PORTAGE AVE	2.4 S OF S/C	RENEW TO R W/20 CU
216 MARJORIE ST	12	12	3.73 NSL BLDG	-	RECONNECT SERVICE
RESIDENTIAL	LEAD	LEAD	101.970 NNL PORTAGE AVE	2.5 S OF S/C	RECONNECT SERVICE
217 MARJORIE ST	-	-	3.98 NSL BLDG	-	RECONNECT SERVICE
RESIDENTIAL	-	-	100.440 NNL PORTAGE AVE	-	RECONNECT SERVICE
218 MARJORIE ST	-	12	1.57 NSL BLDG	-	RECONNECT SERVICE
RESIDENTIAL	-	LEAD	108.010 NNL PORTAGE AVE	0.2 S OF S/C	RECONNECT SERVICE
219 MARJORIE ST	20	-	5.22 NSL BLDG	-	RECONNECT SERVICE
RESIDENTIAL	CU	-	109.110 NNL PORTAGE AVE	0.9 S OF S/C	RECONNECT SERVICE
220 MARJORIE ST	20	20	5.72 NSL BLDG	-	RECONNECT SERVICE
RESIDENTIAL	CU	CU	119.090 NNL PORTAGE AVE	0.7 N OF S/C	RECONNECT SERVICE
221 MARJORIE ST	20	12	2.89 NSL BLDG	-	RECONNECT SERVICE
RESIDENTIAL	CU	LEAD	114.810 NNL PORTAGE AVE	0.9 S OF S/C	RECONNECT SERVICE
222 MARJORIE ST	20	12	4.30 NSL BLDG	-	RECONNECT SERVICE
RESIDENTIAL	CU	LEAD	125.180 NNL PORTAGE AVE	4.4 S OF S/C	RENEW TO R W/20 CU
223 MARJORIE ST	12	20	4.10 NSL BLDG	-	RECONNECT SERVICE
RESIDENTIAL	LEAD	CU	123.510 NNL PORTAGE AVE	1.3 N OF S/C	RENEW TO R W/20 CU
224 MARJORIE ST	20	20	1.90 NSL BLDG	-	RECONNECT SERVICE
RESIDENTIAL	CU	CU	131.010 NNL PORTAGE AVE	OPP OF S/C	RECONNECT SERVICE
225 MARJORIE ST	20	-	4.10 NSL BLDG	-	RECONNECT SERVICE
RESIDENTIAL	CU	-	131.730 NNL PORTAGE AVE	OPP OF S/C	RECONNECT SERVICE
1813 PORTAGE AVE	-	-	4.10 NSL BLDG	-	RECONNECT SERVICE
RESIDENTIAL	-	-	131.730 NNL PORTAGE AVE	-	RECONNECT SERVICE

\* SERVICES TO BE RENEWED TO R. ALL OTHERS TO BE RECONNECTED

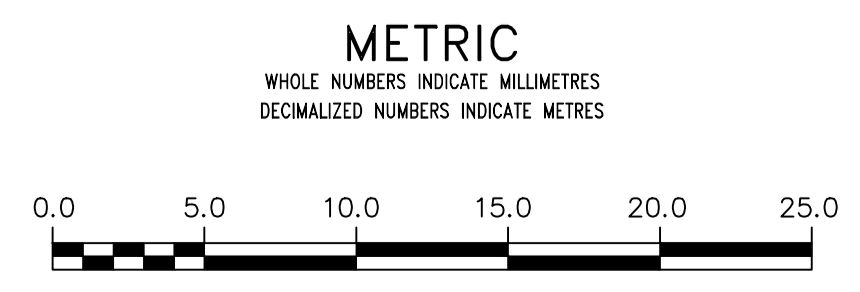
NOTE: CHAINAGES SHOWN ARE ALONG E. R. OF MARJORIE STREET

MARJORIE STREET



FOR INDEX SEE D-16527

NOTE: ALL VALVES TO BE INSTALLED COUNTERCLOCKWISE TO CLOSE

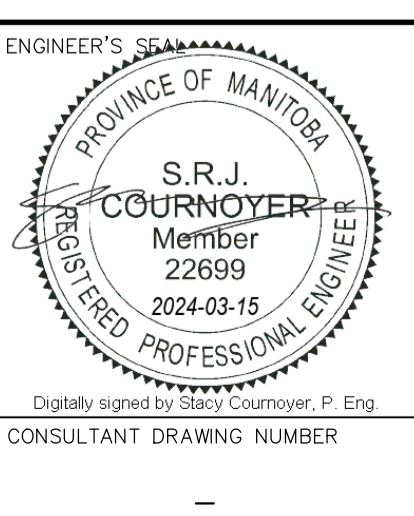


**WARNING**  
IF POWER EQUIPMENT OR EXPLOSIVES ARE TO BE USED FOR EXCAVATION ON THIS PROJECT THE CONTRACTOR MUST:  
1) NOTIFY THE GAS COMPANY OF THE PROPOSED LOCATION OF EXCAVATION.  
2) TAKE PRECAUTION TO AVOID DAMAGE TO GAS COMPANY INSTALLATIONS.  
SEE PROVINCIAL REGULATION 210/72 FOR DETAILS

**LOCATION APPROVED**  
UNDERGROUND STRUCTURES  
SUPV. U/G STRUCTURES COMMITTEE DATE  
NOTE:  
LOCATION OF UNDERGROUND STRUCTURES AS SHOWN ARE BASED ON THE BEST INFORMATION AVAILABLE BUT NO GUARANTEE IS GIVEN THAT ALL EXISTING UTILITIES ARE SHOWN OR THAT THE GIVEN LOCATIONS ARE EXACT. CONFIRMATION OF EXISTENCE AND EXACT LOCATION OF ALL SERVICES MUST BE OBTAINED FROM THE INDIVIDUAL UTILITIES BEFORE PROCEEDING WITH CONSTRUCTION.

VERTICAL DATUM: CGVD28 (HT2.0 Geoid)			
HORIZONTAL DATUM: NAD83 (June 1990), Zone 14			
NO.	REVISIONS	DATE	BY

DESIGNED BY	RG	CHECKED BY	SC
DRAWN BY	AJ	APPROVED BY	SC
SCALE:		RELEASED FOR CONSTRUCTION	
HORIZONTAL	1:250		
VERTICAL	1:50		
DATE	2024 03 08	DATE	
PLOT DATE:	2024 03 08		



**THE CITY OF WINNIPEG**  
WATER AND WASTE DEPARTMENT  
ENGINEERING DIVISION

2024 WATER MAIN RENEWALS  
CONTRACT 2  
**MARJORIE STREET**  
415 S OF NESS AVENUE TO  
135 N OF PORTAGE AVENUE

SHEET 7 OF 12  
CITY DRAWING NUMBER  
D-16532