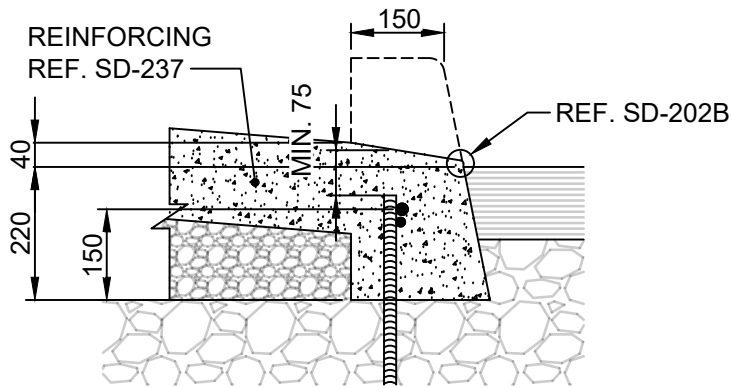
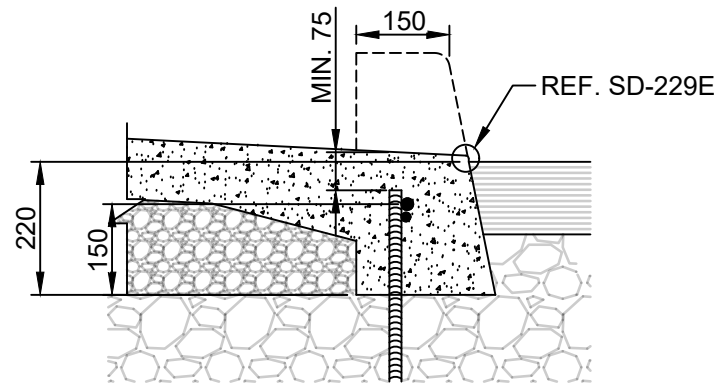


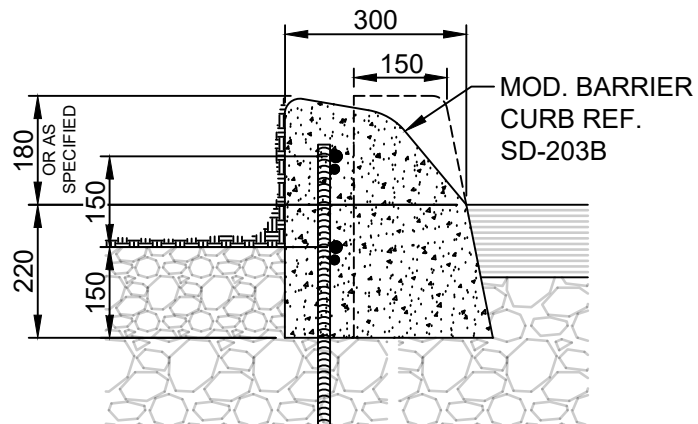
## **APPENDIX 'B' – STANDARD DETAILS**



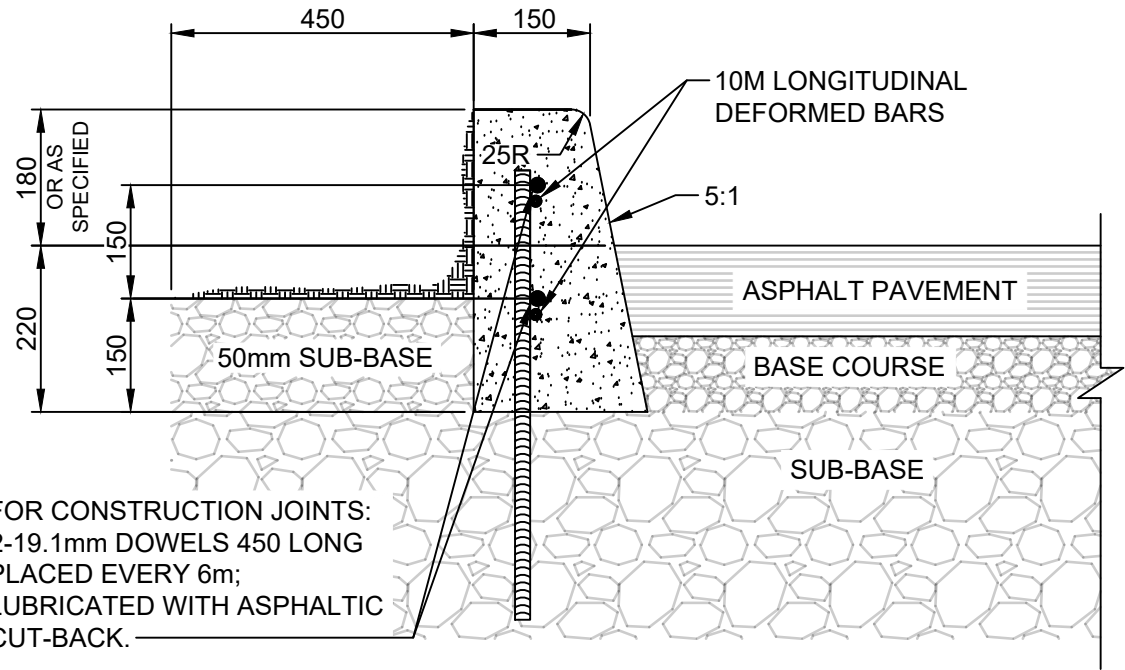
**LIP CURB FOR ASPHALT PAVEMENTS**



**CURB RAMPS FOR ASPHALT PAVEMENTS**



**MODIFIED BARRIER CURB FOR ASPHALT PAVEMENTS**




**BARRIER CURB FOR ASPHALT PAVEMENTS**

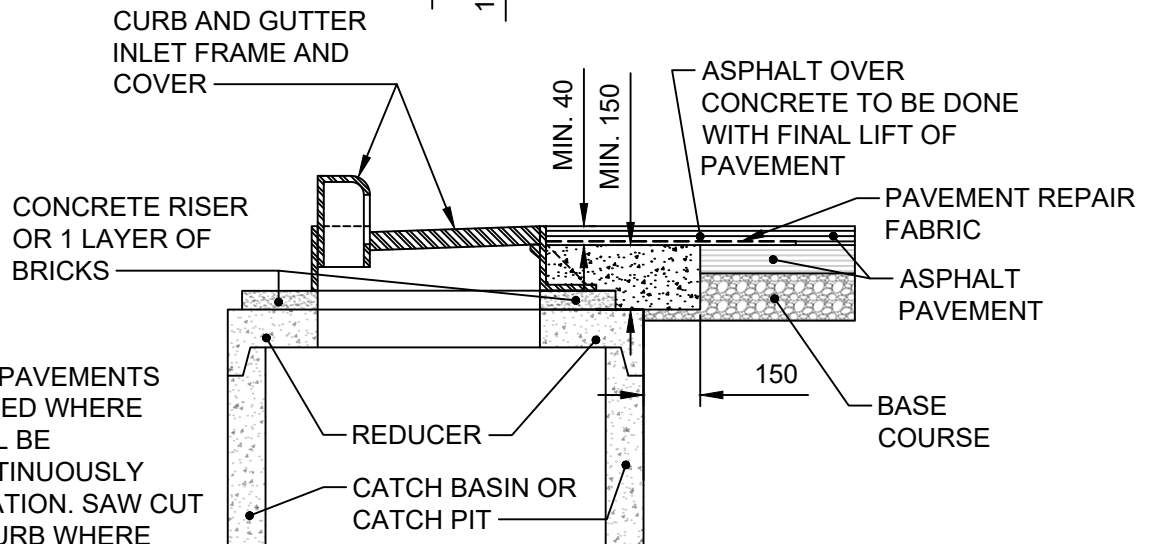
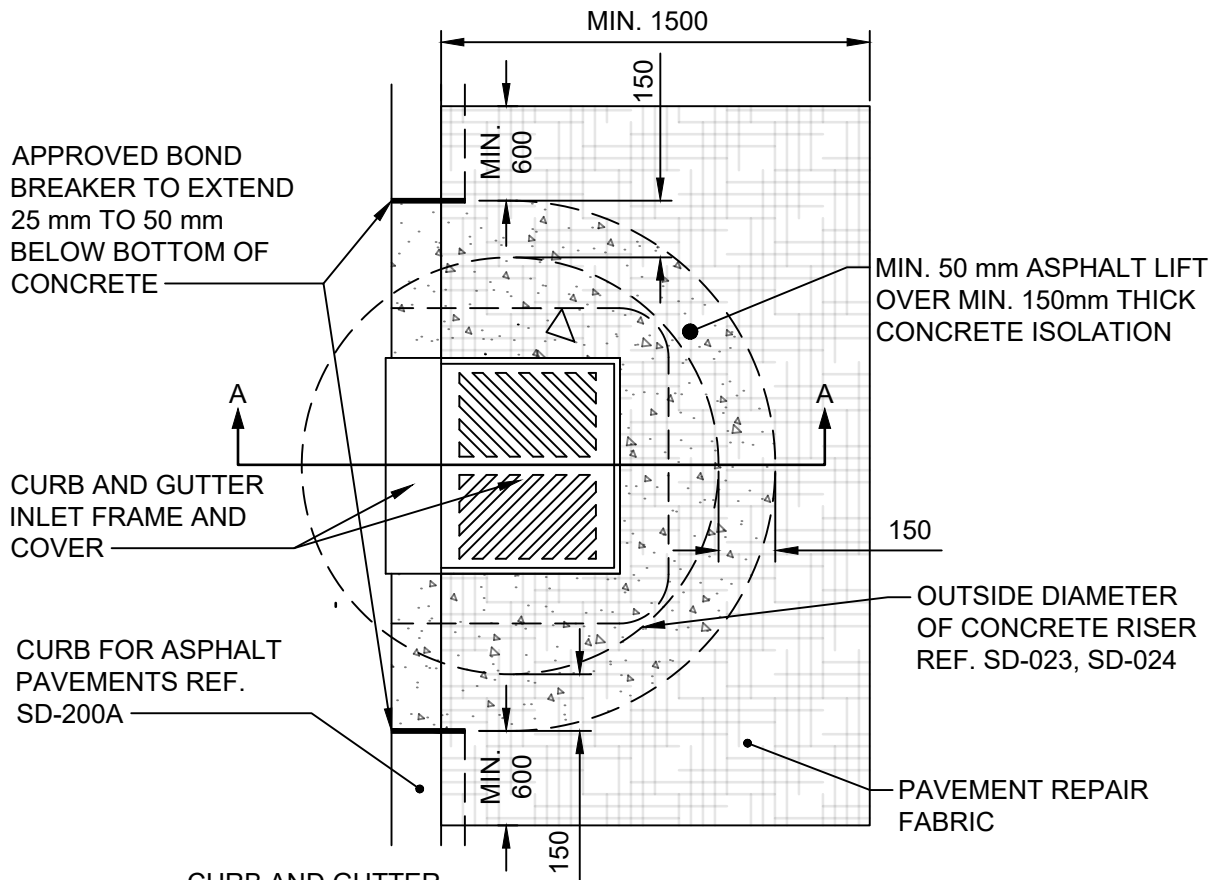
FOR CONSTRUCTION JOINTS:  
2-19.1mm DOWELS 450 LONG  
PLACED EVERY 6m;  
LUBRICATED WITH ASPHALTIC  
CUT-BACK.

**NOTES:**

1. TRANSVERSE SAW CUT EVERY 3m OR AT PAVEMENT JOINTS.
2. TRANSVERSE SAW CUTS ARE TO BE A MAXIMUM DEPTH OF 25mm.

DIMENSIONS IN MILLIMETERS

 <p><b>THE CITY OF WINNIPEG</b> PUBLIC WORKS DEPARTMENT</p>	Revisions		
Reference Spec. No. CW 3240, CW 3310, CW 3325	No.	Date	Description
<p>VARIOUS CURB TYPES FOR ASPHALT PAVEMENTS</p>	Designed By: A.G.	Drawn By: R.B.	Scale : N.T.S.
	Checked By: B.K.	Date: 2022-02-21	Drawing No. SD-200A
	Approved: PAVEMENT MANAGEMENT BRANCH		DRAFT



**NOTE:**

CURB FOR ASPHALT PAVEMENTS SHALL BE SLIP FORMED WHERE POSSIBLE AND SHALL BE CONSTRUCTED CONTINUOUSLY THROUGH THE ISOLATION. SAW CUT AND REMOVE THE CURB WHERE ISOLATION WILL BE INSTALLED.

**SECTION A-A**

DIMENSIONS IN MILLIMETRES



**THE CITY OF WINNIPEG**  
PUBLIC WORKS DEPARTMENT

Reference Spec. No.  
CW 3325

Revisions

No.	Date	Description	By

INLET ISOLATION DETAIL FOR  
ASPHALT PAVEMENTS

Designed By:  
A.G.

Drawn By:  
R.B.

Scale :  
N.T.S.

Checked By:  
B.K.

Date:  
2023-2-16

Drawing No.  
SD-220D

Approved:  
PAVEMENT MANAGEMENT BRANCH

DRAFT