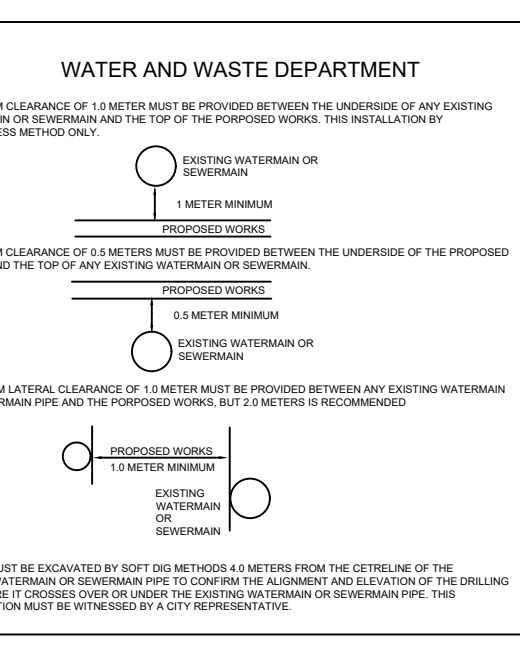


SD-200A PLAN VIEW
N.T.S.

NOTES:

- REFER TO SPECIFICATION E15, CONSTRUCTION OF VARIOUS CURB TYPES FOR ASPHALT PAVEMENT OF THE TENDER DOCUMENT
- TRANSVERSE JOINT SAW CUT EVERY 3.0m TO A MAXIMUM DEPTH OF 25mm

- CONSTRUCTION NOTES**
- REMOVE EXISTING PAVEMENT AND CONSTRUCT NEW 125mm ASPHALT PAVEMENT AS PER TYPICAL CROSS SECTION
 - CONSTRUCT NEW CONCRETE CURB FOR ASPHALT PAVEMENT (SD-200A, E15)
 - RENEW EXISTING CONCRETE SIDEWALK (SD-228A)
 - REMOVE EXISTING PAVEMENT AND CONSTRUCT 150mm REINFORCED CONCRETE PAVEMENT WITH MODIFIED BARRIER CURB
 - CONSTRUCT CURB RAMP (SD-200A, SD-229C, SD-229D)
 - ABANDON EXISTING CATCH BASIN & EXISTING CB LEAD AS PER CW2130
 - INSTALL NEW 1800 CATCH BASIN WITH CURB AND GUTTER INLET FRAME (SD-024), AND CONNECT TO SEWER WITH 250mm Ø PVC PIPE AS PER CW 2130
 - INSTALL 6.0m - 150mm Ø SUB DRAINS (BOTH SIDES), CONNECT TO CATCH BASIN (SD-245) AND CAP ENDS AS PER CW 3120
 - INSTALL NEW FRAME AND SOLID COVER (AP-006, AP-007) AND ADJUST TO GRADE
 - RE-GRADE EXISTING PAVING STONES
 - RENEW EXISTING PRECAST SIDEWALK BLOCKS
 - RENEW EXISTING BARRIER CURB (SD-205, SD206A)
 - LIMIT OF RECONSTRUCTION
 - CONSTRUCT MIN. 150mm CONCRETE ISOLATION AND INSTALL TYPE B PAVEMENT REPAIR FABRIC (SD-220D)
 - REMOVE EXISTING APPROACH AND CONSTRUCT NEW 150mm REINFORCED CONCRETE APPROACH WITH LIP CURB FOR ASPHALT PAVEMENT (SD-200A, SD-235, SD-237)
 - CONSTRUCT NEW 100mm CONCRETE SIDEWALK (SD-228A)
 - REPLACE FRAME AND COVER (AP-006, AP-007, AP-008), AND ADJUST TO GRADE DIRECTED BY CONTRACT ADMINISTRATOR
 - INSTALL NEW 1200 CATCH BASIN WITH CURB AND GUTTER INLET FRAME (SD-245), AND CONNECT TO EXISTING CB LEAD WITH 250mm Ø PVC PIPE AS PER CW2130
 - INSTALL NEW 1200 CATCH BASIN WITH CURB AND GUTTER INLET FRAME (SD-245), AND CONNECT TO EXISTING MANHOLE WITH 250mm Ø PVC PIPE AS PER CW2130
 - INSTALL NEW 1200mm Ø MANHOLE (SD-010) AND 250mm Ø PVC SEWER, CONNECT TO MANHOLE
 - LIMIT OF RESURFACE
 - MILL EXISTING ASPHALT AS DIRECTED BY CONTRACT ADMINISTRATOR
 - CONSTRUCT NEW ASPHALT OVERLAY 50mm (TYP.) TYPE 1A
 - CONSTRUCT NEW 150mm REINFORCED CONCRETE PAVEMENT AS PER CW3230

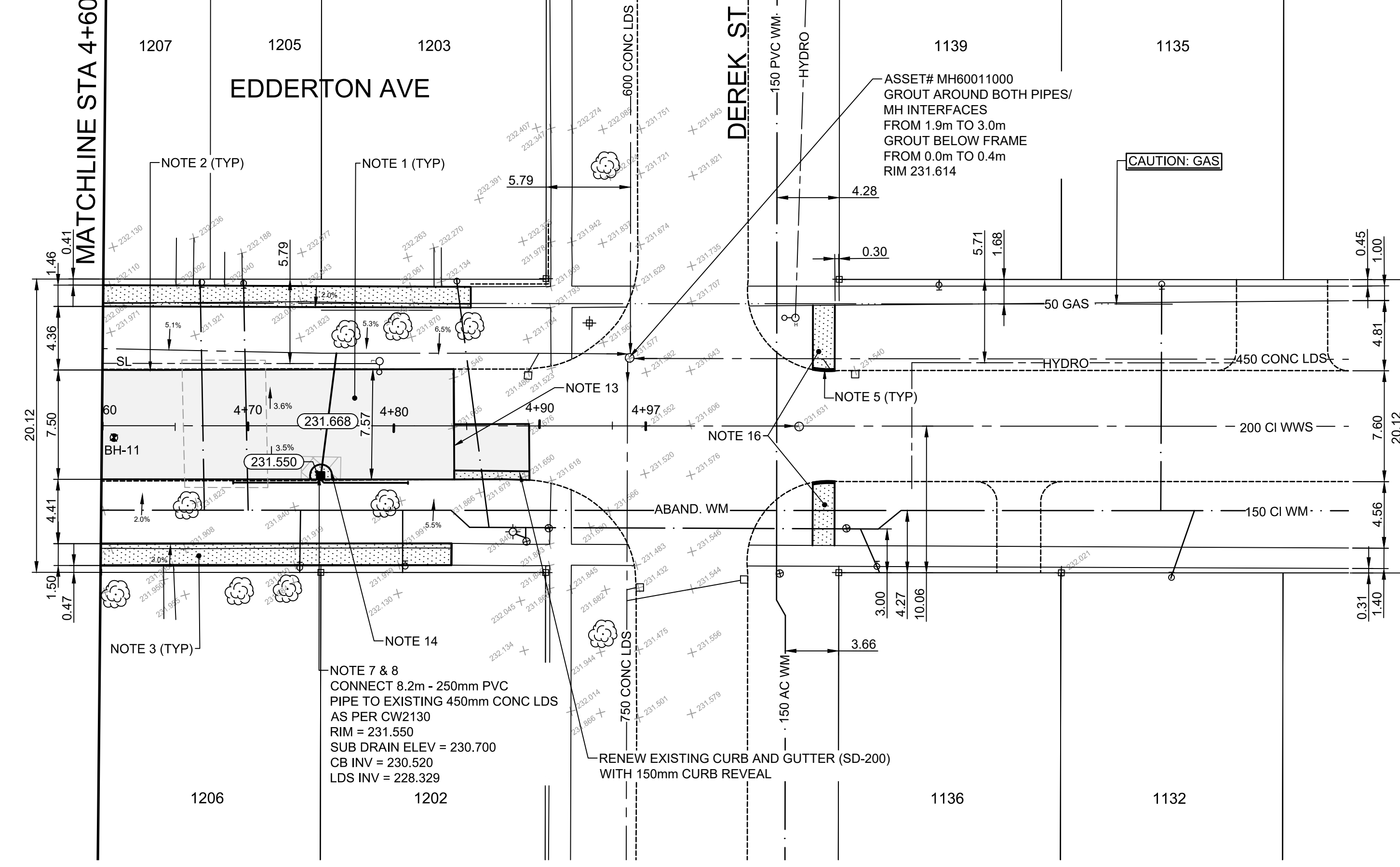


METRIC
WHOLE NUMBERS INDICATE MILLIMETERS
DECIMALIZED NUMBERS INDICATE METERS

ISSUED FOR TENDER

TENDER NO. 18-2024

- GENERAL NOTES**
- PAVEMENT DIMENSIONS ARE TO BACK OF CURB
 - ALL CURB RADII UNDER 15.0m SHALL BE MODIFIED (SD-203B)
 - CURB REPLACEMENT AS DIRECTED BY CONTRACT ADMINISTRATOR
 - CONTRACTOR TO CONFIRM THE LOCATION OF ALL UTILITIES/SERVICES IN THE FIELD PRIOR TO CONSTRUCTION
 - ADJUST ALL EXISTING WATER VALVES AND CURB STOPS TO GRADE
 - PAVEMENT REPAIRS SHOWN ARE A REPRESENTATIVE SAMPLE OF THE TENDER QUANTITIES
 - ASPHALT TIE-INS ON APPROACHES TO BE DETERMINED IN FIELD BY THE CONTRACT ADMINISTRATOR
 - ALL WATER SERVICES WITHIN THE LIMITS OF THE RECONSTRUCTION SHALL BE INSULATED AS PER SD-018



EXISTING	LEGEND - PLAN	PROPOSED	EXISTING	LEGEND - PLAN	PROPOSED	EXISTING	LEGEND - PROFILE	PROPOSED
⊕	HYDRANT	⊕	---	LDS/WWS	---	---	ELEVATIONS	---
⊗	VALVE	⊗	---	WATERMAIN	---	---	CONCRETE	---
○	CURB STOP	○	---	GAS	---	---	CONCRETE SIDEWALK	---
⊙	MANHOLE	⊙	---	TRAFFIC SIGNALS	---	---	ASPHALT	---
□	CATCH BASIN	□	---	HYDRO/STREET LIGHT	---	---	WOOD FENCE	---
△	CURB INLET	△	---	MTS/SHAW	---	---	CONCRETE/METAL FENCE	---
○	HYDRO POLE	○	---	CURB RENEWAL	---	---	PAVEMENT REPAIR FABRIC	---
○	LIGHT STANDARD	○	---	PROPERTY LINE	---	---	WATER SERVICE INSULATION	---
○	TRAFFIC SIGNAL POLE	○	---	RAMP CURB	---	---	NORTH GUTTER	---
+	SURVEY BAR	+	---	SHRUB	---	---	CENTER LINE	---
⊕	GEODETIC BENCH MARK	⊕	---	TREE	---	---	SOUTH GUTTER	---

NO.	REVISIONS	DATE	BY
3.	ISSUED FOR TENDER	03/12/24	T.L.
2.	SUBMIT FOR ENGINEERS REVIEW	03/01/24	T.L.
1.	SUBMIT FOR PLAN APPROVAL	02/05/24	T.L.

B.M. 1B - NE CORNER OF BEAUMONT & EDDERTON
ELEV. 232.274

ENGINEERING DIVISION
TECHNOLOGY SERVICES BRANCH
106 - 1155 PACIFIC AVE

DESIGNED BY T.L. CHECKED BY G.K., R.W.
DRAWN BY T.L. APPROVED BY M.L.

HOR. SCALE: 1 : 250
VERTICAL: 1 : 10

DATE 2024/03/06

ENGINEER'S SEAL

THE CITY OF WINNIPEG
PUBLIC WORKS DEPARTMENT

EDDERTON BAY & AVENUE
FROM BEAUMONT STREET TO DEREK STREET
ASPHALT PAVEMENT RECONSTRUCTION AND RESURFACING
FROM STA. 4+60 TO STA. 4+90

CITY DRAWING NUMBER SE-24-88
SHEET 7 OF 17
4