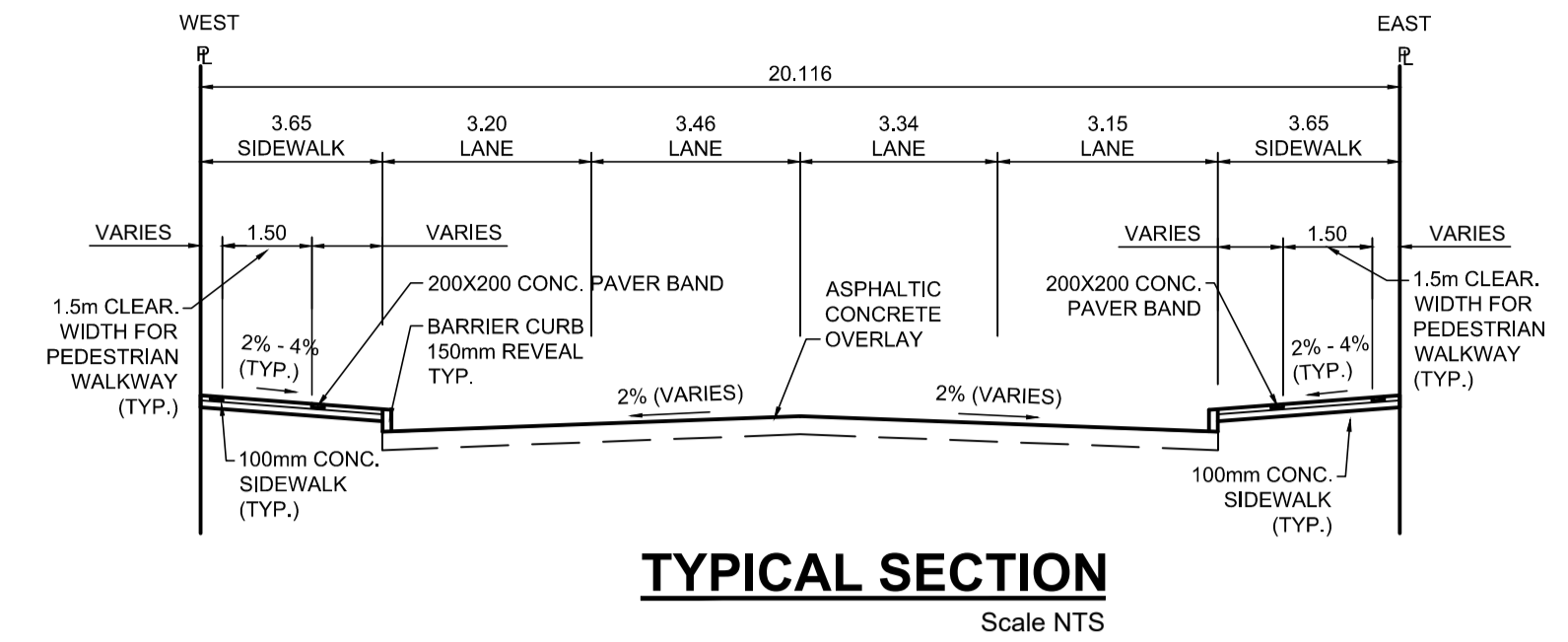


PROFILE
Scale H=1:250 V=1:10

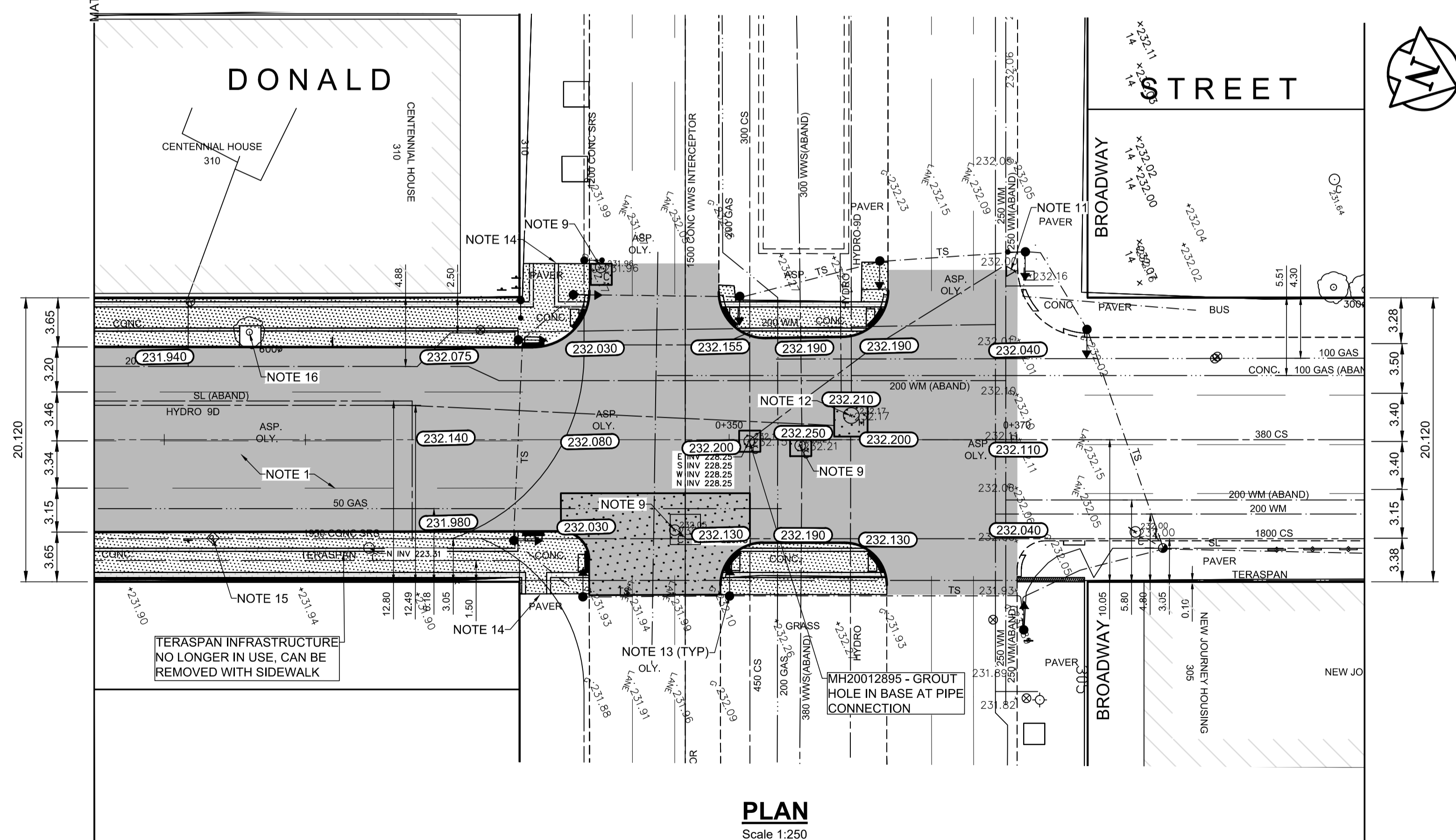


TYPICAL SECTION
Scale NTS

ITEM	RIM ELEV.	Sta	INVERT						CONNECTION	LEAD	FLOW RESTRICTOR	
			EAST	WEST	NORTH	SOUTH	V. RISER	SEWER				
CB13	231.710E	0+150	230.070					229.780	223.61±	1800 SRS	14.0 m-2500 @ 2% Min	150mm
CB02	231.710W	0+150		230.070				230.050	223.61±	1800 SRS	1.0 m-2500 @ 2% Min	200mm

- REFERENCE NOTES**
- PAVEMENT DIMENSIONS ARE TO BACK OF CURB
 - BASELINE IS CENTRELINE OF RIGHT-OF-WAY
 - PROPERTY LINES OBTAINED FROM THE CITY OF WINNIPEG L.B.I.S., AND SCALE FACTOR WAS NOT APPLIED
 - REFER TO AECOM FIELD BOOK NO. 5062 - 5069, 5072
 - CATCH BASIN CONNECTIONS TO SEWER DESIGNED TO MAINTAIN PRE-CONSTRUCTION CAPACITY BY CATCH BASIN LEAD RESTRICTION AS INDICATED ON THE DRAWINGS. ADDITIONAL OR MODIFIED CONNECTIONS TO THE SEWER SYSTEM BEYOND THOSE INDICATED ON THE DRAWINGS REQUIRE REVIEW AND WRITTEN APPROVAL BY THE CONTRACT ADMINISTRATOR.

- CONSTRUCTION NOTES**
- PLANE EXISTING ASPHALT AND CONSTRUCT NEW ASPHALTIC PAVEMENT OVERLAY TYPE 1A (AVERAGE THICKNESS 85mm)
 - REMOVE EXISTING PAVEMENT AND CONSTRUCT NEW 230mm PLAIN DOWELLED CONCRETE PAVEMENT
 - REMOVE EXISTING CONCRETE SIDEWALK AND CONSTRUCT NEW 100mm SIDEWALK WITH BLOCKOUTS c/w PAVING STONES FOR INDICATOR SURFACE (SEE CT-30)
 - PLACE ASPHALT PAVEMENT (TYPE 1A)
 - INSTALL NEW DETECTABLE SURFACE WARNING TILES
 - CONSTRUCT NEW BARRIER CURB (150mm REVEAL HT. SEPARATE)
 - CONSTRUCT NEW MONOLITHIC CURB RAMP (10mm HT. INTEGRAL)
 - CONSTRUCT NEW MODIFIED BARRIER CURB (180mm HT. INTEGRAL) AS PER SD-203B AT ALL STREET/LANE INTERSECTION RADII
 - ADJUST EXISTING CATCHBASIN / MANHOLE FRAME AND COVER
 - ADJUST EXISTING WATERMAIN VALVE BOX TO GRADE
 - REMOVE AND REPLACE EXISTING CATCHPIT c/w CURB AND GUTTER INLET (SD-023) AND CONNECT TO EXISTING CATCHBASIN
 - ADJUST UTILITY MANHOLE FRAME REINFORCE ISOLATION WITH 15M BARS FOR ISOLATIONS IN ROADWAY AND 10M BARS FOR ISOLATIONS IN SIDEWALK
 - EXISTING TRAFFIC SIGNALS POLES TO BE RELOCATED (REFER TO SIGNALS DRAWINGS FOR ADDITIONAL DETAILS)
 - REGRADE EXISTING PAVERS
 - REMOVE EXISTING PARKING METER (BY OTHERS)
 - PROTECT EXISTING TREE, CONSTRUCT OPENING IN CONCRETE SIDEWALK AND PLACE CRUSH GRANITE AROUND EXISTING TREES
 - TERASPAN INFRASTRUCTURE NO LONGER IN USE, REMOVE DURING PAVEMENT OR SIDEWALK REMOVAL
 - CONTRACT ADMINISTRATOR TO DETERMINE LOCATIONS FOR INSTALLATION OF PAVEMENT REPAIR FABRIC PRIOR TO ASPHALT PAVING



PLAN
Scale 1:250

**ENGINEERS
GEOSCIENTISTS
MANITOBA**
Certificate of Authorization
AECOM Canada Ltd.
No. 4671 Date: _____

METRIC
WHOLE NUMBERS INDICATE MILLIMETRES
DECIMALIZED NUMBERS INDICATE METRES

150 mm W.M.	150 mm W.M.	300mm L.D.S.	250mm W.W.S.	HYDRO	PROPERTY LINE	PROFILE	LEGEND - PLAN	LEGEND - PROFILE
◇	◇	◇	◇	M.T.S.	---	---	---	---
○	○	○	○	CONCRETE	---	---	---	---
○	○	○	○	ASPHALT	---	---	---	---
○	○	○	○	PROPERTY LINE	---	---	---	---
○	○	○	○	SURVEY BAR	---	---	---	---
○	○	○	○	ELEVATION	(35.750)	---	---	---
○	○	○	○	TREE	---	---	---	---
○	○	○	○	SIDEWALK RAMP	---	---	---	---
○	○	○	○	CONCRETE SIDEWALK	---	---	---	---
○	○	○	○	FENCE	---	---	---	---
○	○	○	○	EXISTING	---	---	---	---
○	○	○	○	PROPOSED	---	---	---	---

LOCATION APPROVED UNDERGROUND STRUCTURES

SUPV. U/G STRUCTURES COMMITTEE DATE

NOTE:
LOCATION OF UNDERGROUND STRUCTURES AS SHOWN ARE BASED ON THE BEST INFORMATION AVAILABLE, BUT NO GUARANTEE IS GIVEN THAT ALL EXISTING UTILITIES ARE SHOWN OR THAT THE GIVEN LOCATIONS ARE EXACT. CONFIRMATION OF EXISTENCE AND EXACT LOCATION OF ALL SERVICES MUST BE OBTAINED FROM THE INDIVIDUAL UTILITIES BEFORE PROCEEDING WITH CONSTRUCTION.

NO.	REVISIONS	DATE	BY
0	ISSUED FOR TENDER	2020/10/30	TLF
A	ISSUED FOR REVIEW	2020/10/23	TLF

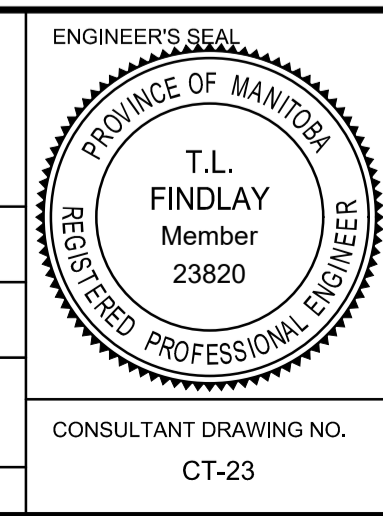
B.M. tbn South East Corner of Smith Avenue & Broadway, property line, top of 1" x 1" iron bar
ELEV. 231.968

AECOM

DESIGNED BY	BC	CHECKED BY	TLF
DRAWN BY	JT	APPROVED BY	TLF

HOR. SCALE: AS SHOWN
VERTICAL: RELEASED FOR CONSTRUCTION BY:

DATE 2020/05/06



THE CITY OF WINNIPEG
PUBLIC WORKS DEPARTMENT
ENGINEERING DIVISION

DOWNTOWN PAVEMENT RENEWAL PROJECT
2021 CONSTRUCTION

PLAN/PROFILE GRADING PLAN
DONALD STREET
STATION 0+305 TO BROADWAY

CITY DRAWING NUMBER P-3535-23
SHEET 23 OF 30

CONSULTANT DRAWING NO. CT-23