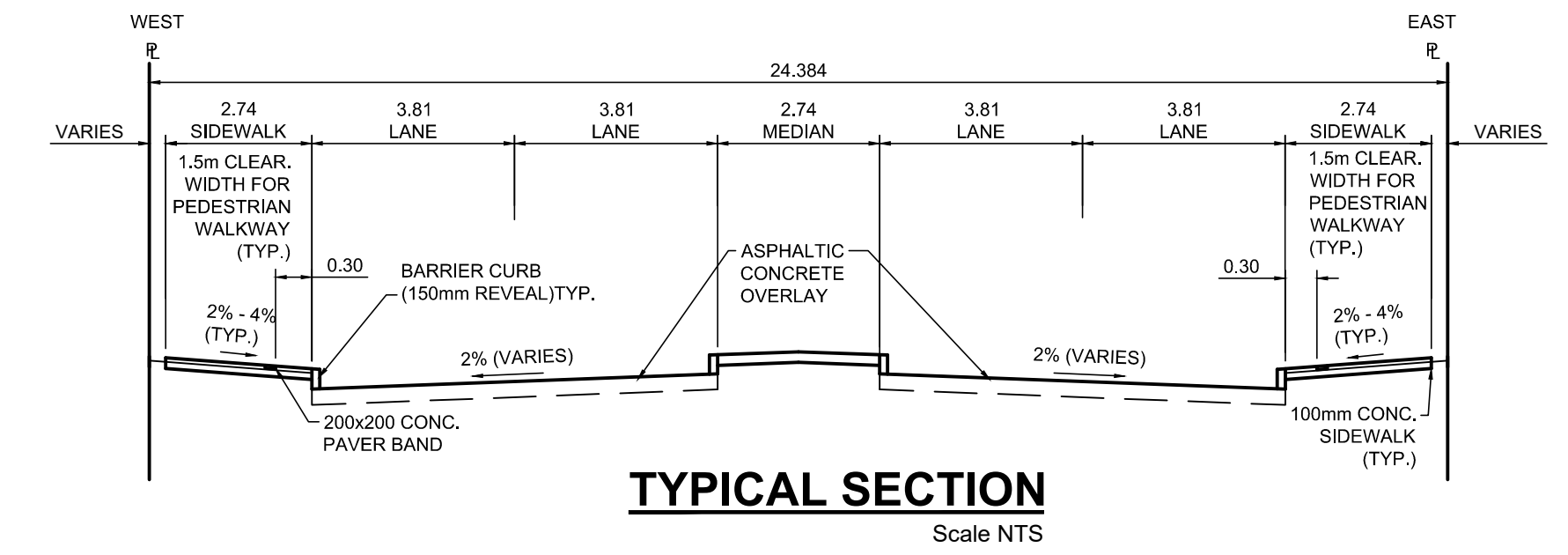


PROFILE
Scale H=1:250 V=1:10



TYPICAL SECTION
Scale NTS

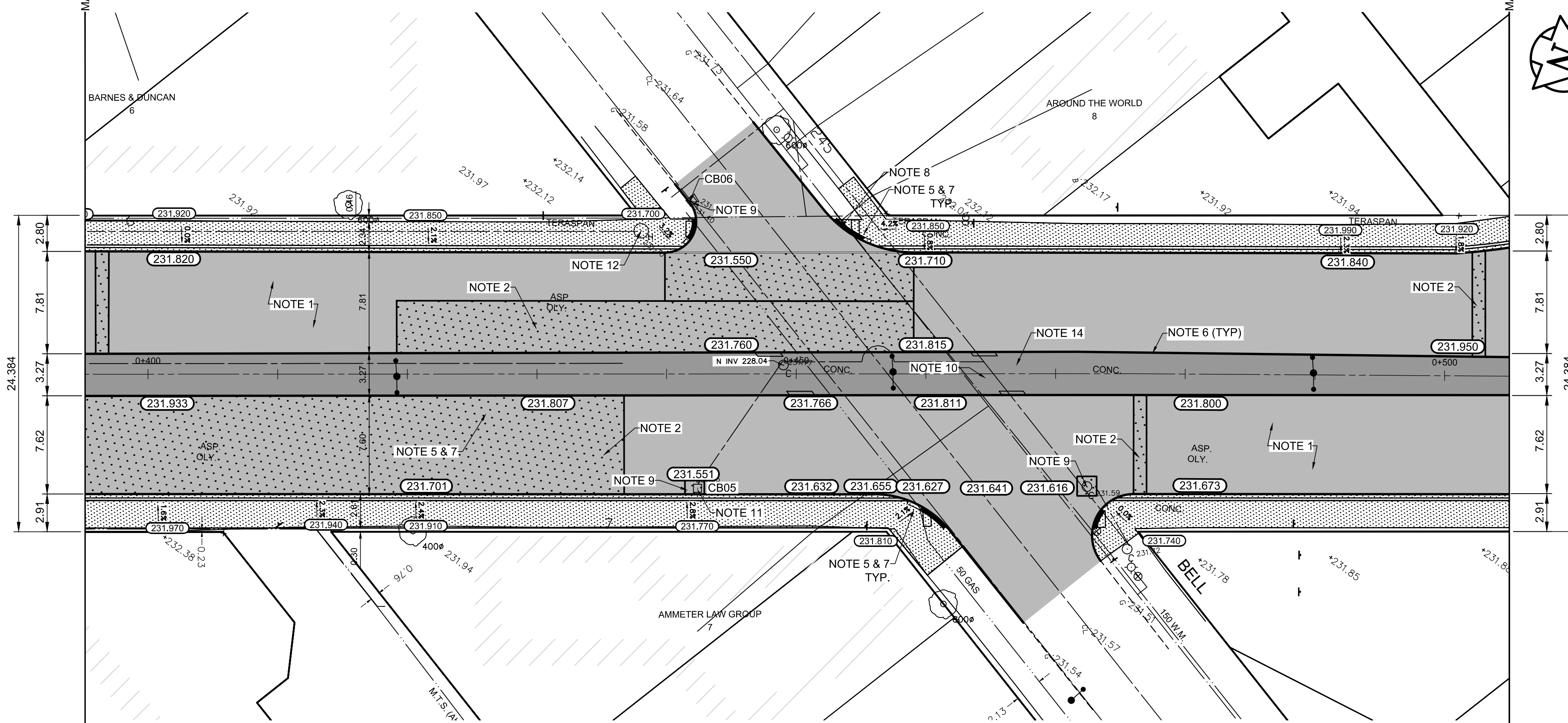
ITEM	RIM ELEV.	Sta	INVERT					CONNECTION	LEAD	FLOW RESTRICTOR
			EAST	WEST	NORTH	SOUTH	V. RISER			
CB05	231.551E	0+443	230.070				229.780	223.61±	1800 SRS	14.0 m-2500 @ 2% Min
CB06	231.550W	0+442		230.070			230.050	223.61±	1800 SRS	1.0 m-2500 @ 2% Min

REFERENCE NOTES

- A. PAVEMENT DIMENSIONS ARE TO BACK OF CURB
- B. BASELINE IS CENTRELINE OF RIGHT-OF-WAY
- C. PROPERTY LINES OBTAINED FROM THE CITY OF WINNIPEG L.B.I.S., AND SCALE FACTOR WAS NOT APPLIED
- D. REFER TO AECOM FIELD BOOK NO. 5062 - 5069, 5072
- E. CATCH BASIN CONNECTIONS TO SEWER DESIGNED TO MAINTAIN PRE-CONSTRUCTION CAPACITY BY CATCH BASIN LEAD RESTRICTION AS INDICATED ON THE DRAWINGS. ADDITIONAL OR MODIFIED CONNECTIONS TO THE SEWER SYSTEM BEYOND THOSE INDICATED ON THE DRAWINGS REQUIRE REVIEW AND WRITTEN APPROVAL BY THE CONTRACT ADMINISTRATOR.

CONSTRUCTION NOTES

1. PLANE EXISTING ASPHALT AND CONSTRUCT NEW ASPHALTIC PAVEMENT OVERLAY TYPE 1A (AVERAGE THICKNESS 85mm)
2. REMOVE EXISTING PAVEMENT AND CONSTRUCT NEW 230mm PLAIN DOWELLED CONCRETE PAVEMENT
3. REMOVE EXISTING CONCRETE SIDEWALK AND CONSTRUCT NEW 100mm SIDEWALK WITH BLOCKOUTS OF PAVING STONES FOR INDICATOR SURFACE (SEE CT-30)
4. PLACE ASPHALT PAVEMENT (TYPE 1A)
5. INSTALL NEW DETECTABLE SURFACE WARNING TILES
6. CONSTRUCT NEW BARRIER CURB (150mm REVEAL HT. SEPARATE)
7. CONSTRUCT NEW MONOLITHIC CURB RAMP (10mm HT. INTEGRAL)
8. CONSTRUCT NEW MODIFIED BARRIER CURB (180mm HT. INTEGRAL) AS PER SD-203B AT ALL STREET/LANE INTERSECTION RADII
9. REMOVE AND REPLACE CATCHBASIN / MANHOLE FRAME AND COVER
10. ADJUST EXISTING WATERMAIN VALVE BOX TO GRADE
11. REPAIR 1.0m OF 250mm SEWER SERVICE LEAD
12. ADJUST UTILITY MANHOLE FRAME REINFORCE ISOLATION WITH 15M BARS FOR ISOLATIONS IN ROADWAY AND 10M BARS FOR ISOLATIONS IN SIDEWALK
13. REMOVE EXISTING PEDESTRIAN CROSSING
14. PLACE RAKED ASPHALT IN CENTER MEDIAN
15. CONTRACT ADMINISTRATOR TO DETERMINE LOCATIONS FOR INSTALLATION OF PAVEMENT REPAIR FABRIC PRIOR TO ASPHALT PAVING



PLAN
Scale 1:250

ENGINEERS GEOSCIENTISTS MANITOBA
Certificate of Authorization
AECOM Canada Ltd.
No. 4671 Date: _____

METRIC
WHOLE NUMBERS INDICATE MILLIMETRES
DECIMALIZED NUMBERS INDICATE METRES

150 mm W.M.	150 mm W.M.	300mm L.D.S.	250mm W.W.S.	HYDRO	PROPERTY LINE	PROFILE	LEGEND - PROFILE
HYDRANT	VALVE	LAND DRAINAGE SEWER	WASTEWATER SEWER	M.T.S.	CONCRETE	WEST GUTTER	WEST GUTTER
MANHOLE	CATCH BASIN	CATCH PIT	TRAFFIC SIGNAL POLE	SURVEY BAR	ASPHALT	EAST GUTTER	EAST GUTTER
STREET LIGHT	GAS			ELEVATION (35.750)	PROPERTY LINE	N/W PROPERTY LINE	N/W PROPERTY LINE
				TREE	PROPERTY LINE	S/E PROPERTY LINE	S/E PROPERTY LINE
				SIDEWALK RAMP	CONCRETE SIDEWALK		
				FENCE			

LOCATION APPROVED UNDERGROUND STRUCTURES
SUPV. U/G STRUCTURES COMMITTEE DATE
NOTE: LOCATION OF UNDERGROUND STRUCTURES AS SHOWN ARE BASED ON THE BEST INFORMATION AVAILABLE. BUT NO GUARANTEE IS GIVEN THAT ALL EXISTING UTILITIES ARE SHOWN OR THAT THE GIVEN LOCATIONS ARE EXACT. CONFIRMATION OF EXISTENCE AND EXACT LOCATION OF ALL SERVICES MUST BE OBTAINED FROM THE INDIVIDUAL UTILITIES BEFORE PROCEEDING WITH CONSTRUCTION.

B.M.	tbm	South East Corner of Smith Avenue & Broadway, property line, top of 1" x 1" iron bar
ELEV.	231.968	

DESIGNED BY	BC	CHECKED BY	TLF
DRAWN BY	JT	APPROVED BY	TLF
HOR. SCALE:	AS SHOWN	RELEASED FOR CONSTRUCTION BY:	
VERTICAL:			
DATE	2020/05/06	DATE	

ENGINEER'S SEAL
PROVINCE OF MANITOBA
T.L. FINDLAY
Member 23820
REGISTERED PROFESSIONAL ENGINEER

THE CITY OF WINNIPEG
PUBLIC WORKS DEPARTMENT
ENGINEERING DIVISION
DOWNTOWN PAVEMENT RENEWAL PROJECT
2021 CONSTRUCTION
PLAN/PROFILE GRADING PLAN
DONALD STREET
STATION 0+395 TO STATION 0+505
CITY DRAWING NUMBER P-3535-18
SHEET 18 OF 30