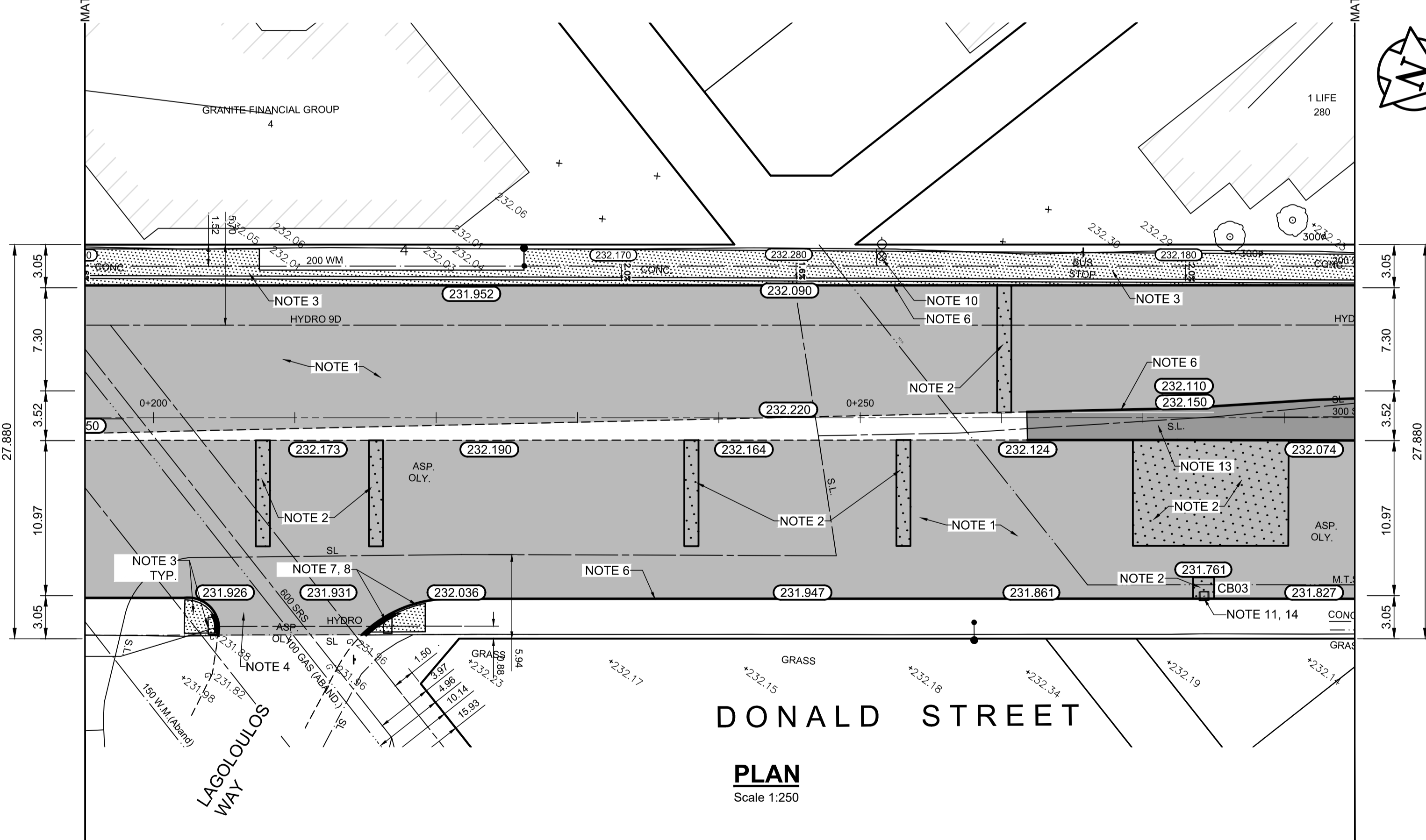


**TYPICAL SECTION**  
Scale NTS

ITEM	RIM ELEV.	Sta	INVERT					CONNECTION	LEAD	FLOW RESTRICTOR		
			EAST	WEST	NORTH	SOUTH	V. RISER					
CB03	231.761E	0+274	230.070					229.780	223.61±	1800 SRS	14.0 m-2500 @ 2% Min	n/a

- REFERENCE NOTES**
- PAVEMENT DIMENSIONS ARE TO BACK OF CURB
  - BASELINE IS CENTRELINE OF RIGHT-OF-WAY
  - PROPERTY LINES OBTAINED FROM THE CITY OF WINNIPEG L.B.I.S., AND SCALE FACTOR WAS NOT APPLIED
  - REFER TO AECOM FIELD BOOK NO. 5062 - 5069, 5072
  - CATCH BASIN CONNECTIONS TO SEWER DESIGNED TO MAINTAIN PRE-CONSTRUCTION CAPACITY BY CATCH BASIN LEAD RESTRICTION AS INDICATED ON THE DRAWINGS. ADDITIONAL OR MODIFIED CONNECTIONS TO THE SEWER SYSTEM BEYOND THOSE INDICATED ON THE DRAWINGS REQUIRE REVIEW AND WRITTEN APPROVAL BY THE CONTRACT ADMINISTRATOR.

- CONSTRUCTION NOTES**
- PLANE EXISTING ASPHALT AND CONSTRUCT NEW ASPHALTIC PAVEMENT OVERLAY TYPE 1A (AVERAGE THICKNESS 85mm)
  - REMOVE EXISTING PAVEMENT AND CONSTRUCT NEW 230mm PLAIN DOWELLED CONCRETE PAVEMENT
  - REMOVE EXISTING CONCRETE SIDEWALK AND CONSTRUCT NEW 100mm SIDEWALK WITH BLOCKOUTS OF PAVING STONES FOR INDICATOR SURFACE (SEE CT-30)
  - PLACE ASPHALT PAVEMENT (TYPE 1A)
  - INSTALL NEW DETECTABLE SURFACE WARNING TILES
  - CONSTRUCT NEW BARRIER CURB (150mm REVEAL HT. SEPARATE)
  - CONSTRUCT NEW MONOLITHIC CURB RAMP (10mm HT. INTEGRAL)
  - CONSTRUCT NEW MODIFIED BARRIER CURB (180mm HT. INTEGRAL) AS PER SD-203B AT ALL STREET/LANE INTERSECTION RADII
  - ADJUST EXISTING CATCHBASIN / MANHOLE FRAME AND COVER
  - ADJUST EXISTING WATERMAIN VALVE BOX TO GRADE
  - REMOVE EXISTING FRAME AND COVER AND PLACE NEW FRAME AND COVER (AP-008 AND AP-009), INSPECT EXISTING LEAD.
  - CONTRACT ADMINISTRATOR TO DETERMINE LOCATIONS FOR INSTALLATION OF PAVEMENT REPAIR FABRIC PRIOR TO ASPHALT PAVING
  - PLACE RAKED ASPHALT IN CENTER MEDIAN
  - REMOVE AND REPLACE CONCRETE RISER TO 0.3m



**PLAN**  
Scale 1:250

EXISTING	LEGEND - PLAN	PROPOSED	EXISTING	LEGEND - PLAN	PROPOSED	EXISTING	LEGEND - PROFILE	PROPOSED
150 mm W.M.	WATERMAIN	150 mm W.M.	HYDRO	M.T.S.	CONCRETE	ASPHALT	PROPERTY LINE	SURVEY BAR
300mm L.D.S.	LAND DRAINAGE SEWER	300mm L.D.S.	WASTEWATER SEWER	250mm W.W.S.	MANHOLE	CATCH BASIN	CATCH PIT	TRAFFIC SIGNAL POLE
250mm W.W.S.	STREET LIGHT	GAS	HYDRO	M.T.S.	CONCRETE	ASPHALT	PROPERTY LINE	SURVEY BAR

**LOCATION APPROVED UNDERGROUND STRUCTURES**

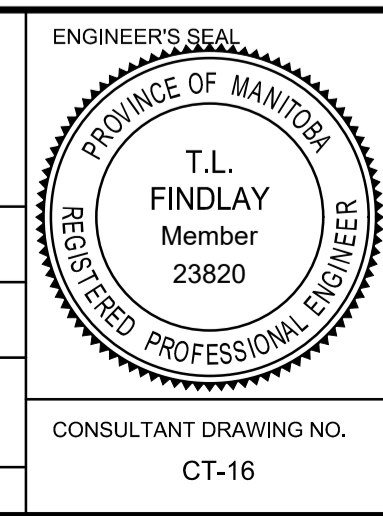
SUPV. U/G STRUCTURES COMMITTEE DATE

**NOTE:**  
LOCATION OF UNDERGROUND STRUCTURES AS SHOWN ARE BASED ON THE BEST INFORMATION AVAILABLE, BUT NO GUARANTEE IS GIVEN THAT ALL EXISTING UTILITIES ARE SHOWN OR THAT THE GIVEN LOCATIONS ARE EXACT. CONFIRMATION OF EXISTENCE AND EXACT LOCATION OF ALL SERVICES MUST BE OBTAINED FROM THE INDIVIDUAL UTILITIES BEFORE PROCEEDING WITH CONSTRUCTION.

NO.	REVISIONS	DATE	BY
0	ISSUED FOR TENDER	2020/10/30	TLF
A	ISSUED FOR REVIEW	2020/10/23	TLF

**AECOM**

DESIGNED BY: BC  
CHECKED BY: TLF  
DRAWN BY: JT  
APPROVED BY: TLF  
HOR. SCALE: AS SHOWN  
VERTICAL: RELEASED FOR CONSTRUCTION BY: DATE: 2020/05/06



**ENGINEERS GEOSCIENTISTS MANITOBA**  
Certificate of Authorization  
AECOM Canada Ltd.  
No. 4671 Date: \_\_\_\_\_

**THE CITY OF WINNIPEG**  
PUBLIC WORKS DEPARTMENT  
ENGINEERING DIVISION

DOWNTOWN PAVEMENT RENEWAL PROJECT  
2021 CONSTRUCTION

PLAN/PROFILE GRADING PLAN  
DONALD STREET  
STATION 0+195 TO STATION 0+285

CITY DRAWING NUMBER P-3535-16  
SHEET 16 OF 30

CONSULTANT DRAWING NO. CT-16